

**AGENDA**  
**OKLAHOMA CONSERVATION COMMISSION**  
**Agriculture Building Board Room - 2800 N. Lincoln**  
**Oklahoma City, Oklahoma**  
**December 5, 2011 - 9:30 a.m.**

1. Call to Order.
2. Roll call.
3. Pledge of Allegiance.
4. Discussion and possible approval of regular meeting minutes held November 7, 2011.
5. Discussion and possible approval of Recommendations for Appointment of Conservation District Director (Exhibit #1).
6. Discussion and possible approval of Claims and Financial Statement (Exhibit #2).
7. Recognition of Conservation Commission Employees Year of Service:
  - a. Gina Levesque, Conservation Reserve Enhancement Program Coordinator, 5 years.
  - b. Dianne Ireton, Abandoned Mine Land Systems Coordinator, 25 years.
8. Presentation of Commission Agreements (Exhibit #3):  
Discussion and possible ratification of the following new agreement:
  - a. Natural Resources Conservation Service No. 68-7335-2-02 to provide engineering assistance to the Commission's AML Program including planning, design and construction management.  
Discussion and possible approval of the following new agreement:
  - b. Oklahoma Scenic Rivers Commission (OCC-292) to provide access and other support for the 2009 ARRA funded Illinois River Streambank Stabilization Project.
9. Discussion and possible approval of a Cost Share Program Year 13 request from the Woodward County Conservation District to add Practice #533, Pumping Plant: Solar Pumps as an approved practice.
10. Discussion and possible approval of cattle shade structure/rainwater harvesting device for addition to the North Canadian River 319 Project for demonstration.
11. Public Comments.
12. New Business.
13. Status Reports:
  - a. Oklahoma Conservation Commission Members

- b. Oklahoma Conservation Commission Staff
    - 1. Mike Thralls, Executive Director
    - 2. Lisa Knauf Owen, District Services Director
    - 3. Shanon Phillips, Water Quality Director
    - 4. Mike Kastl, Abandoned Mine Land Director
    - 5. Steve Coffman, Financial Management and Human Resources Director
    - 6. Mike Sharp, Information Technology Director
    - 7. Robert Toole, Conservation Programs Director
    - 8. Ben Pollard, Assistant Director
  - c. Oklahoma Association of Conservation Districts
  - d. USDA-Natural Resources Conservation Service
  - e. Oklahoma Department of Agriculture, Food and Forestry
14. Next Meeting: January 9, 2012, Agriculture Building Board Room, 2800 N. Lincoln Boulevard, Oklahoma City, Oklahoma at 9:30 a.m.
15. Adjournment.

NOTE: Following adjournment, members will be attending the Conservation Commission's annual staff Christmas luncheon and meeting at the Cattlemen's Event Center in Oklahoma City, Oklahoma.

**RECOMMENDATIONS FOR APPOINTMENT OF CONSERVATION DISTRICT DIRECTORS**

<u>DISTRICT</u>	<u>NAME</u>	<u>SUCCEEDS</u>	<u>TERM EXPIRES</u>	<u>POS#</u>
West Caddo	William Saunders IV	Bill Pond	June 30, 2014	E1

**OKLAHOMA CONSERVATION COMMISSION  
CLAIMS REGISTER BY PROGRAM  
FOR THE PERIOD OF OCTOBER 26, 2011 THRU NOVEMBER 17, 2011**

Voucher	Fund Class	Department	Date	Amount	Account	Payee
<b>Employee Withholdings / Retirement / Insurance</b>						
34889	20500	1000004	10/27/2011	\$26.67	512310	COMPSOURCE OKLAHOMA
34889	40000	3000004	10/27/2011	\$91.26	512310	COMPSOURCE OKLAHOMA
34889	19201	1000005	10/27/2011	\$96.03	512310	COMPSOURCE OKLAHOMA
34889	40000	1000002	10/27/2011	\$134.59	512310	COMPSOURCE OKLAHOMA
34889	40000	4000001	10/27/2011	\$205.67	512310	COMPSOURCE OKLAHOMA
34889	19201	3000005	10/27/2011	\$259.59	512310	COMPSOURCE OKLAHOMA
34889	41500	2000008	10/27/2011	\$335.86	512310	COMPSOURCE OKLAHOMA
34889	40000	2000001	10/27/2011	\$410.91	512310	COMPSOURCE OKLAHOMA
34889	40000	5000002	10/27/2011	\$472.19	512310	COMPSOURCE OKLAHOMA
34889	19201	1000001	10/27/2011	\$831.20	512310	COMPSOURCE OKLAHOMA
34889	19201	2000001	10/27/2011	\$1,215.10	512310	COMPSOURCE OKLAHOMA
34889	40000	4000005	10/27/2011	\$1,454.00	512310	COMPSOURCE OKLAHOMA
34889	19201	3000003	10/27/2011	\$8,299.63	512310	COMPSOURCE OKLAHOMA
34889	40000	5000001	10/27/2011	\$9,458.30	512310	COMPSOURCE OKLAHOMA
34903	40000	3000002	11/1/2011	\$1,911.29	512120	AFLAC
34903	70000	3000002	11/1/2011	\$4,389.92	512120	AFLAC
34903	40000	3000002	11/1/2011	\$95.00	531600	AFLAC
34904	70000	3000002	11/1/2011	\$4,616.15	512110	STATE & EDUC EMPL GRP INS BD
34904	25000	3000002	11/1/2011	\$136,054.17	512110	STATE & EDUC EMPL GRP INS BD
35026	70000	3000002	11/16/2011	\$13,694.98	513250	OKLAHOMA PUBLIC EMPLOYEES RETIREMENT SYS
35026	40000	3000002	11/16/2011	<u>\$60,799.48</u>	513250	OKLAHOMA PUBLIC EMPLOYEES RETIREMENT SYS

**\$244,851.99 Employee Withholdings / Retirement / Insurance**

**Administration**

34890	19201	1000001	11/1/2011	\$279.50	521120	WELDON LYNN S
34912	19201	1000002	11/3/2011	\$1,051.00	515380	OFFICE OF STATE FINANCE
34913	19201	1000001	11/3/2011	\$864.19	531230	OFFICE OF STATE FINANCE
34914	19201	1000001	11/4/2011	\$25.62	536110	AUTHORITY ORDER-PCARD
34914	19201	1000001	11/4/2011	\$44.95	536140	AUTHORITY ORDER-PCARD
34914	19201	1000001	11/4/2011	\$193.90	536140	AUTHORITY ORDER-PCARD
34914	19201	1000001	11/4/2011	\$56.94	536150	AUTHORITY ORDER-PCARD
34914	19201	1000001	11/4/2011	\$150.00	536150	AUTHORITY ORDER-PCARD
34914	19201	1000001	11/4/2011	\$50.00	542120	AUTHORITY ORDER-PCARD
34914	40000	1000002	11/4/2011	\$56.94	536150	AUTHORITY ORDER-PCARD
34914	19201	1000005	11/4/2011	\$24.91	536150	AUTHORITY ORDER-PCARD
34918	40000	1000001	11/4/2011	\$83.28	531130	AT & T MOBILITY NATIONAL ACCOUNT LLC
34918	40000	1000002	11/4/2011	\$145.64	531130	AT & T MOBILITY NATIONAL ACCOUNT LLC
34920	19201	1000001	11/4/2011	\$6.45	536140	EUREKA WATER COMPANY
34928	19201	1000001	11/4/2011	\$77.00	522130	BEST WESTERN MCALESTER
34929	19201	1000001	11/4/2011	\$77.00	522130	NORTHWEST INN
34930	19201	1000001	11/4/2011	\$77.00	522130	LAKEVIEW STATE LODGE
34931	19201	1000001	11/4/2011	\$77.00	522130	HOLIDAY INN EXPRESS TAHLEQUAH
34941	40000	1000001	11/4/2011	\$337.06	532140	DEPARTMENT OF CENTRAL SERVICES
34941	19201	1000001	11/4/2011	\$443.82	532140	DEPARTMENT OF CENTRAL SERVICES
34955	19201	1000005	11/8/2011	\$83.25	521110	HARRISON MARK S
34955	19201	1000005	11/8/2011	\$2.70	521140	HARRISON MARK S
34957	19201	1000001	11/8/2011	\$214.23	521310	GEORGE STUNKARD
34958	19201	1000001	11/8/2011	\$41.07	521310	MIKE ROOKER
34959	19201	1000001	11/8/2011	\$436.01	521310	DAN LOWRANCE

**OKLAHOMA CONSERVATION COMMISSION  
CLAIMS REGISTER BY PROGRAM  
FOR THE PERIOD OF OCTOBER 26, 2011 THRU NOVEMBER 17, 2011**

Voucher	Fund Class	Department	Date	Amount	Account	Payee
34960	19201	1000001	11/8/2011	\$243.09	521310	KARL JETT
34963	19201	1000001	11/8/2011	\$83.25	521110	THRALLS MICHAEL L
34989	19201	1000001	11/9/2011	\$764.19	531130	OFFICE OF STATE FINANCE
34989	19201	1000001	11/9/2011	\$54.00	533130	OFFICE OF STATE FINANCE
34989	19201	1000001	11/9/2011	\$31.00	541230	OFFICE OF STATE FINANCE
35002	19201	1000001	11/10/2011	\$185,035.27	548110	CAPITOL IMPROVEMENT AUTHORITY
35014	40000	1000001	11/15/2011	\$1,210.00	515560	OFFICE OF STATE FINANCE
35028	19201	1000001	11/16/2011	\$938.76	521310	JAMES GERARD GREGO
35038	19201	1000001	11/16/2011	\$33.24	531110	FEDEX FREIGHT EAST INC
35044	40000	1000001	11/16/2011	\$446.50	532160	SHARP ELECTRONICS CORPORATION
35046	19201	1000001	11/16/2011	\$212.50	532160	SHARP ELECTRONICS CORPORATION
35046	19201	1000001	11/16/2011	\$28.01	533140	SHARP ELECTRONICS CORPORATION
35046	19201	1000001	11/16/2011	\$175.34	533140	SHARP ELECTRONICS CORPORATION
35047	19201	1000001	11/16/2011	\$62.50	532130	AMERICAN SELF STORAGE
35048	19201	1000001	11/16/2011	\$62.50	532130	AMERICAN SELF STORAGE
35055	19201	1000001	11/16/2011	\$62.50	532130	AMERICAN SELF STORAGE
35056	19201	1000001	11/16/2011	\$62.50	532130	AMERICAN SELF STORAGE
35057	19201	1000001	11/16/2011	\$62.50	532130	AMERICAN SELF STORAGE
35058	19201	1000001	11/16/2011	\$83.33	532130	AMERICAN SELF STORAGE
35059	19201	1000001	11/16/2011	\$41.67	532130	AMERICAN SELF STORAGE
35060	19201	1000001	11/16/2011	\$12.90	536140	EUREKA WATER COMPANY
35066	19201	1000001	11/16/2011	\$864.19	531230	OFFICE OF STATE FINANCE
35067	19201	1000002	11/16/2011	\$1,051.00	515380	OFFICE OF STATE FINANCE
35068	40000	1000001	11/17/2011	\$124.55	532140	DEPARTMENT OF CENTRAL SERVICES
35068	19201	1000001	11/17/2011	<u>\$421.95</u>	532140	DEPARTMENT OF CENTRAL SERVICES

**\$197,066.70 Administration**

**Watershed Operation & Maintenance**

34869	40000	2000001	10/26/2011	\$33,382.81	545110	C-P INTEGRATED SERVICES INC
34882	40000	2000001	10/27/2011	\$213.00	521230	STEWART JANET M
34882	40000	2000001	10/27/2011	\$235.86	521260	STEWART JANET M
34918	40000	2000001	11/4/2011	\$425.40	531130	AT & T MOBILITY NATIONAL ACCOUNT LLC
34923	19201	2000001	11/4/2011	\$77.82	531130	AT&T CORPORATION
34924	19201	2000001	11/4/2011	\$127.60	531130	AT&T CORPORATION
34925	19201	2000001	11/4/2011	\$65.66	531130	AT&T CORPORATION
34926	19201	2000001	11/4/2011	\$154.00	522130	BEST WESTERN TIMBER RIDGE INN
34927	19201	2000001	11/4/2011	\$250.00	531260	OK ONE-CALL SYSTEM INC
34933	19201	2000001	11/4/2011	\$49.09	534290	COMDATA NETWORK INC
35039	19201	2000001	11/16/2011	\$49.48	531370	AMERICAN ELECTRIC POWER
35040	19201	2000001	11/16/2011	\$56.48	531370	AMERICAN ELECTRIC POWER
35041	19201	2000001	11/16/2011	\$0.98	531130	AT&T CORPORATION
35042	19201	2000001	11/16/2011	<u>\$0.33</u>	531130	AT&T CORPORATION

**\$35,088.51 Watershed Operation & Maintenance**

**Watershed Rehabilitation**

34891	49000	2000003	11/1/2011	\$9,950.79	545110	TERRACON CONSULTANTS INC
34892	49000	2000003	11/1/2011	\$26,566.70	515240	TERRACON CONSULTANTS INC
34953	40000	2000003	11/8/2011	\$295,203.00	545110	SILVER SPUR CONSTRUCTION CO
34954	49000	2000003	11/8/2011	\$27,007.29	545110	CONTINENTAL CONSTRUCTION CORPORATION

**OKLAHOMA CONSERVATION COMMISSION  
CLAIMS REGISTER BY PROGRAM  
FOR THE PERIOD OF OCTOBER 26, 2011 THRU NOVEMBER 17, 2011**

Voucher	Fund Class	Department	Date	Amount	Account	Payee
35029	40000	2000003	11/16/2011	\$325.79	531600	DEPARTMENT OF CENTRAL SERVICES
35030	21500	2000003	11/16/2011	\$34.30	555170	96 LOGAN COUNTY CONSERVATION DISTRICT
35030	40000	2000003	11/16/2011	\$63.70	555170	96 LOGAN COUNTY CONSERVATION DISTRICT
35031	49000	2000003	11/16/2011	\$17,280.75	515240	TERRACON CONSULTANTS INC
35032	49000	2000003	11/16/2011	\$12,178.53	545110	TERRACON CONSULTANTS INC
35033	49000	2000003	11/16/2011	<u>\$27,992.02</u>	515240	TERRACON CONSULTANTS INC

**\$416,602.87 Watershed Rehabilitation**

**FEMA - Sugar Creek**

34918	41500	2000008	11/4/2011	\$29.92	531130	AT & T MOBILITY NATIONAL ACCOUNT LLC
34941	41500	2000008	11/4/2011	\$1,398.81	532140	DEPARTMENT OF CENTRAL SERVICES
35063	41500	2000008	11/16/2011	\$100.00	555170	88 DEER CREEK CONSERVATION DISTRICT
35068	41500	2000008	11/17/2011	<u>\$1,241.50</u>	532140	DEPARTMENT OF CENTRAL SERVICES

**\$2,770.23 FEMA - Sugar Creek**

**Field Services**

34872	19201	3000001	10/26/2011	\$41.83	555170	71 KIAMICHI CONSERVATION DISTRICT
34872	19201	3000001	10/26/2011	\$375.00	555170	92 KIAMICHI CONSERVATION DISTRICT
34872	19201	3000001	10/26/2011	\$2,047.13	555170	1 KIAMICHI CONSERVATION DISTRICT
34872	19201	3000001	10/26/2011	\$2,796.94	555170	5 KIAMICHI CONSERVATION DISTRICT
34873	19201	3000001	10/26/2011	\$2,249.91	555170	7 CRAIG COUNTY CONSERVATION DISTRICT
34873	19201	3000001	10/26/2011	\$2,909.06	555170	5 CRAIG COUNTY CONSERVATION DISTRICT
34874	19201	3000001	10/26/2011	\$60.00	555170	74 PONTOTOC COUNTY C D
34874	19201	3000001	10/26/2011	\$88.21	555170	71 PONTOTOC COUNTY C D
34874	19201	3000001	10/26/2011	\$200.00	555170	92 PONTOTOC COUNTY C D
34874	19201	3000001	10/26/2011	\$2,064.78	555170	1 PONTOTOC COUNTY C D
34874	19201	3000001	10/26/2011	\$2,140.22	555170	5 PONTOTOC COUNTY C D
34875	19201	3000001	10/26/2011	\$11.95	555170	67 CHECOTAH CONSERVATION DISTRICT #20
34875	19201	3000001	10/26/2011	\$34.91	555170	79 CHECOTAH CONSERVATION DISTRICT #20
34875	19201	3000001	10/26/2011	\$64.29	555170	71 CHECOTAH CONSERVATION DISTRICT #20
34875	19201	3000001	10/26/2011	\$200.00	555170	75 CHECOTAH CONSERVATION DISTRICT #20
34875	19201	3000001	10/26/2011	\$375.00	555170	61 CHECOTAH CONSERVATION DISTRICT #20
34875	19201	3000001	10/26/2011	\$1,298.05	555170	2 CHECOTAH CONSERVATION DISTRICT #20
34876	19201	3000001	10/26/2011	\$60.88	555170	71 MCINTOSH COUNTY CONSERVATION DISTRICT
34876	19201	3000001	10/26/2011	\$64.48	555170	79 MCINTOSH COUNTY CONSERVATION DISTRICT
34876	19201	3000001	10/26/2011	\$100.00	555170	92 MCINTOSH COUNTY CONSERVATION DISTRICT
34876	19201	3000001	10/26/2011	\$350.00	555170	61 MCINTOSH COUNTY CONSERVATION DISTRICT
34876	19201	3000001	10/26/2011	\$1,389.58	555170	2 MCINTOSH COUNTY CONSERVATION DISTRICT
34877	19201	3000001	10/26/2011	\$47.95	555170	71 LITTLE RIVER CONSERVATION DISTRICT
34877	19201	3000001	10/26/2011	\$103.01	555170	11 LITTLE RIVER CONSERVATION DISTRICT
34877	19201	3000001	10/26/2011	\$153.68	555170	26 LITTLE RIVER CONSERVATION DISTRICT
34877	19201	3000001	10/26/2011	\$2,330.91	555170	2 LITTLE RIVER CONSERVATION DISTRICT
34877	19201	3000001	10/26/2011	\$3,165.55	555170	5 LITTLE RIVER CONSERVATION DISTRICT
34878	19201	3000001	10/26/2011	\$458.59	555170	94 LITTLE RIVER CONSERVATION DISTRICT
34879	19201	3000001	10/26/2011	\$105.69	555170	36 LINCOLN COUNTY CONSERVATION DISTRICT
34879	19201	3000001	10/26/2011	\$1,951.54	555170	1 LINCOLN COUNTY CONSERVATION DISTRICT
34879	19201	3000001	10/26/2011	\$2,257.99	555170	5 LINCOLN COUNTY CONSERVATION DISTRICT
34880	19201	3000001	10/26/2011	\$24.25	555170	20 TULSA COUNTY CONSERVATION DISTRICT
34880	19201	3000001	10/26/2011	\$60.00	555170	74 TULSA COUNTY CONSERVATION DISTRICT

**OKLAHOMA CONSERVATION COMMISSION  
CLAIMS REGISTER BY PROGRAM  
FOR THE PERIOD OF OCTOBER 26, 2011 THRU NOVEMBER 17, 2011**

Voucher	Fund Class	Department	Date	Amount	Account	Payee
34880	40000	3000001	10/26/2011	\$63.50	555170	86 TULSA COUNTY CONSERVATION DISTRICT
34880	19201	3000001	10/26/2011	\$79.65	555170	71 TULSA COUNTY CONSERVATION DISTRICT
34880	19201	3000001	10/26/2011	\$195.36	555170	69 TULSA COUNTY CONSERVATION DISTRICT
34880	19201	3000001	10/26/2011	\$2,037.06	555170	11 TULSA COUNTY CONSERVATION DISTRICT
34880	19201	3000001	10/26/2011	\$2,194.41	555170	1 TULSA COUNTY CONSERVATION DISTRICT
34881	19201	3000001	10/26/2011	\$23.62	555170	71 MAYES COUNTY CONSERVATION DISTRICT
34881	19201	3000001	10/26/2011	\$24.30	555170	20 MAYES COUNTY CONSERVATION DISTRICT
34881	40000	3000001	10/26/2011	\$139.83	555170	86 MAYES COUNTY CONSERVATION DISTRICT
34881	19201	3000001	10/26/2011	\$156.75	555170	84 MAYES COUNTY CONSERVATION DISTRICT
34881	19201	3000001	10/26/2011	\$325.00	555170	92 MAYES COUNTY CONSERVATION DISTRICT
34881	19201	3000001	10/26/2011	\$2,135.39	555170	3 MAYES COUNTY CONSERVATION DISTRICT
34887	19201	3000001	10/27/2011	\$73.68	555170	71 JACKSON COUNTY CONSERVATION DIST
34887	19201	3000001	10/27/2011	\$2,329.79	555170	2 JACKSON COUNTY CONSERVATION DIST
34887	19201	3000001	10/27/2011	\$3,237.55	555170	5 JACKSON COUNTY CONSERVATION DIST
34888	19201	3000001	10/27/2011	\$2,328.10	555170	2 ALFALFA COUNTY CONSERVATION DISTRICT
34897	19201	3000001	11/1/2011	\$41.00	555170	71 HUGHES COUNTY CONSERVATION DIST
34897	19201	3000001	11/1/2011	\$159.27	555170	24 HUGHES COUNTY CONSERVATION DIST
34897	19201	3000001	11/1/2011	\$275.00	555170	92 HUGHES COUNTY CONSERVATION DIST
34897	19201	3000001	11/1/2011	\$508.32	555170	46 HUGHES COUNTY CONSERVATION DIST
34897	19201	3000001	11/1/2011	\$1,508.45	555170	12 HUGHES COUNTY CONSERVATION DIST
34897	19201	3000001	11/1/2011	\$2,284.16	555170	7 HUGHES COUNTY CONSERVATION DIST
34897	19201	3000001	11/1/2011	\$2,602.52	555170	2 HUGHES COUNTY CONSERVATION DIST
34898	19201	3000001	11/1/2011	\$300.00	555170	92 ELLIS COUNTY CONSERVATION DISTRICT
34898	19201	3000001	11/1/2011	\$681.39	555170	80 ELLIS COUNTY CONSERVATION DISTRICT
34898	19201	3000001	11/1/2011	\$1,862.22	555170	5 ELLIS COUNTY CONSERVATION DISTRICT
34898	19201	3000001	11/1/2011	\$1,965.40	555170	2 ELLIS COUNTY CONSERVATION DISTRICT
34899	19201	3000001	11/1/2011	\$34.05	555170	81 NORTH CADDO CONSERVATION DISTRICT
34899	19201	3000001	11/1/2011	\$85.18	555170	80 NORTH CADDO CONSERVATION DISTRICT
34899	19201	3000001	11/1/2011	\$153.94	555170	71 NORTH CADDO CONSERVATION DISTRICT
34899	19201	3000001	11/1/2011	\$225.00	555170	92 NORTH CADDO CONSERVATION DISTRICT
34899	19201	3000001	11/1/2011	\$1,522.71	555170	12 NORTH CADDO CONSERVATION DISTRICT
34899	19201	3000001	11/1/2011	\$1,942.01	555170	1 NORTH CADDO CONSERVATION DISTRICT
34900	19201	3000001	11/1/2011	\$49.25	555170	72 GRADY COUNTY CONSERVATION DIST
34900	19201	3000001	11/1/2011	\$125.08	555170	71 GRADY COUNTY CONSERVATION DIST
34900	19201	3000001	11/1/2011	\$206.70	555170	20 GRADY COUNTY CONSERVATION DIST
34900	19201	3000001	11/1/2011	\$210.00	555170	74 GRADY COUNTY CONSERVATION DIST
34900	19201	3000001	11/1/2011	\$1,295.00	555170	61 GRADY COUNTY CONSERVATION DIST
34900	19201	3000001	11/1/2011	\$2,254.86	555170	6 GRADY COUNTY CONSERVATION DIST
34900	19201	3000001	11/1/2011	\$2,358.62	555170	7 GRADY COUNTY CONSERVATION DIST
34900	19201	3000001	11/1/2011	\$3,049.77	555170	3 GRADY COUNTY CONSERVATION DIST
34901	19201	3000001	11/1/2011	\$24.18	555170	80 EAST WOODS COUNTY CONSERVATION DIST
34901	19201	3000001	11/1/2011	\$168.22	555170	20 EAST WOODS COUNTY CONSERVATION DIST
34901	19201	3000001	11/1/2011	\$229.50	555170	69 EAST WOODS COUNTY CONSERVATION DIST
34901	19201	3000001	11/1/2011	\$2,101.12	555170	12 EAST WOODS COUNTY CONSERVATION DIST
34902	19201	3000001	11/1/2011	\$35.64	555170	81 SEMINOLE COUNTY CONSERVATION DISTRICT
34902	19201	3000001	11/1/2011	\$50.00	555170	92 SEMINOLE COUNTY CONSERVATION DISTRICT
34902	19201	3000001	11/1/2011	\$74.47	555170	71 SEMINOLE COUNTY CONSERVATION DISTRICT
34902	19201	3000001	11/1/2011	\$88.70	555170	82 SEMINOLE COUNTY CONSERVATION DISTRICT
34902	19201	3000001	11/1/2011	\$150.00	555170	74 SEMINOLE COUNTY CONSERVATION DISTRICT
34902	19201	3000001	11/1/2011	\$210.37	555170	80 SEMINOLE COUNTY CONSERVATION DISTRICT
34902	19201	3000001	11/1/2011	\$327.45	555170	69 SEMINOLE COUNTY CONSERVATION DISTRICT
34902	19201	3000001	11/1/2011	\$2,733.54	555170	3 SEMINOLE COUNTY CONSERVATION DISTRICT
34906	19201	3000001	11/3/2011	\$25.00	555170	67 WAGONER COUNTY CONSERVATION DIST NO 22
34906	19201	3000001	11/3/2011	\$125.50	555170	71 WAGONER COUNTY CONSERVATION DIST NO 22

**OKLAHOMA CONSERVATION COMMISSION  
CLAIMS REGISTER BY PROGRAM  
FOR THE PERIOD OF OCTOBER 26, 2011 THRU NOVEMBER 17, 2011**

Voucher	Fund Class	Department	Date	Amount	Account	Payee
34906	19201	3000001	11/3/2011	\$3,271.11	555170	3 WAGONER COUNTY CONSERVATION DIST NO 22
34907	19201	3000001	11/3/2011	\$44.00	555170	72 SEQUOYAH COUNTY CONSERVATION DISTRICT
34907	19201	3000001	11/3/2011	\$48.00	555170	71 SEQUOYAH COUNTY CONSERVATION DISTRICT
34907	19201	3000001	11/3/2011	\$100.00	555170	62 SEQUOYAH COUNTY CONSERVATION DISTRICT
34907	19201	3000001	11/3/2011	\$2,663.78	555170	2 SEQUOYAH COUNTY CONSERVATION DISTRICT
34908	19201	3000001	11/3/2011	\$43.95	555170	20 MAJOR COUNTY CONSERVATION DISTRICT
34908	19201	3000001	11/3/2011	\$44.90	555170	79 MAJOR COUNTY CONSERVATION DISTRICT
34908	19201	3000001	11/3/2011	\$130.96	555170	30 MAJOR COUNTY CONSERVATION DISTRICT
34908	19201	3000001	11/3/2011	\$325.00	555170	92 MAJOR COUNTY CONSERVATION DISTRICT
34908	19201	3000001	11/3/2011	\$2,684.97	555170	2 MAJOR COUNTY CONSERVATION DISTRICT
34908	19201	3000001	11/3/2011	\$2,764.12	555170	9 MAJOR COUNTY CONSERVATION DISTRICT
34909	19201	3000001	11/3/2011	\$45.00	555170	76 CREEK COUNTY CONSERVATION DISTRICT
34909	19201	3000001	11/3/2011	\$58.14	555170	71 CREEK COUNTY CONSERVATION DISTRICT
34909	19201	3000001	11/3/2011	\$600.00	555170	61 CREEK COUNTY CONSERVATION DISTRICT
34909	19201	3000001	11/3/2011	\$1,858.67	555170	9 CREEK COUNTY CONSERVATION DISTRICT
34909	19201	3000001	11/3/2011	\$2,594.69	555170	2 CREEK COUNTY CONSERVATION DISTRICT
34910	19201	3000001	11/3/2011	\$15.00	555170	70 ATOKA COUNTY CONSERVATION DISTRICT
34910	19201	3000001	11/3/2011	\$48.00	555170	71 ATOKA COUNTY CONSERVATION DISTRICT
34910	19201	3000001	11/3/2011	\$65.70	555170	46 ATOKA COUNTY CONSERVATION DISTRICT
34910	19201	3000001	11/3/2011	\$117.60	555170	26 ATOKA COUNTY CONSERVATION DISTRICT
34910	19201	3000001	11/3/2011	\$142.00	555170	72 ATOKA COUNTY CONSERVATION DISTRICT
34910	19201	3000001	11/3/2011	\$1,895.29	555170	7 ATOKA COUNTY CONSERVATION DISTRICT
34910	19201	3000001	11/3/2011	\$2,451.41	555170	2 ATOKA COUNTY CONSERVATION DISTRICT
34922	40000	3000003	11/4/2011	\$60.00	533140	FUZZELLS BUSINESS EQUIPMENT
34933	19201	3000003	11/4/2011	\$167.90	534290	COMDATA NETWORK INC
34934	19201	3000001	11/4/2011	\$20.00	555170	20 EAST WOODS COUNTY CONSERVATION DIST
34934	19201	3000001	11/4/2011	\$25.15	555170	80 EAST WOODS COUNTY CONSERVATION DIST
34934	19201	3000001	11/4/2011	\$236.46	555170	95 EAST WOODS COUNTY CONSERVATION DIST
34934	19201	3000001	11/4/2011	\$452.13	555170	12 EAST WOODS COUNTY CONSERVATION DIST
34935	19201	3000001	11/4/2011	\$50.98	555170	79 KINGFISHER COUNTY CONSERVATION DISTRICT
34935	19201	3000001	11/4/2011	\$77.07	555170	71 KINGFISHER COUNTY CONSERVATION DISTRICT
34935	19201	3000001	11/4/2011	\$167.60	555170	60 KINGFISHER COUNTY CONSERVATION DISTRICT
34935	19201	3000001	11/4/2011	\$2,533.30	555170	5 KINGFISHER COUNTY CONSERVATION DISTRICT
34935	19201	3000001	11/4/2011	\$2,833.52	555170	2 KINGFISHER COUNTY CONSERVATION DISTRICT
34936	19201	3000001	11/4/2011	\$275.00	555170	92 JEFFERSON COUNTY CONSERVATION DIST
34937	19201	3000001	11/4/2011	\$100.00	555170	62 CIMARRON VALLEY CONSERVATION DISTRICT
34937	19201	3000001	11/4/2011	\$200.00	555170	92 CIMARRON VALLEY CONSERVATION DISTRICT
34937	19201	3000001	11/4/2011	\$450.00	555170	61 CIMARRON VALLEY CONSERVATION DISTRICT
34937	19201	3000001	11/4/2011	\$1,118.97	555170	46 CIMARRON VALLEY CONSERVATION DISTRICT
34937	19201	3000001	11/4/2011	\$2,168.35	555170	1 CIMARRON VALLEY CONSERVATION DISTRICT
34937	19201	3000001	11/4/2011	\$2,971.74	555170	5 CIMARRON VALLEY CONSERVATION DISTRICT
34938	19201	3000001	11/4/2011	\$51.34	555170	80 BRYAN CONSERVATION DISTRICT
34938	19201	3000001	11/4/2011	\$80.73	555170	71 BRYAN CONSERVATION DISTRICT
34938	19201	3000001	11/4/2011	\$275.00	555170	92 BRYAN CONSERVATION DISTRICT
34938	19201	3000001	11/4/2011	\$458.59	555170	94 BRYAN CONSERVATION DISTRICT
34938	19201	3000001	11/4/2011	\$1,953.66	555170	1 BRYAN CONSERVATION DISTRICT
34938	19201	3000001	11/4/2011	\$2,080.43	555170	9 BRYAN CONSERVATION DISTRICT
34939	19201	3000001	11/4/2011	\$64.45	555170	79 JEFFERSON COUNTY CONSERVATION DIST
34939	19201	3000001	11/4/2011	\$95.42	555170	82 JEFFERSON COUNTY CONSERVATION DIST
34939	19201	3000001	11/4/2011	\$154.93	555170	71 JEFFERSON COUNTY CONSERVATION DIST
34939	19201	3000001	11/4/2011	\$631.27	555170	80 JEFFERSON COUNTY CONSERVATION DIST
34939	19201	3000001	11/4/2011	\$2,168.74	555170	7 JEFFERSON COUNTY CONSERVATION DIST
34939	19201	3000001	11/4/2011	\$2,347.23	555170	2 JEFFERSON COUNTY CONSERVATION DIST
34940	19201	3000003	11/4/2011	\$178.75	522110	OKLAHOMA TURNPIKE AUTHORITY



**OKLAHOMA CONSERVATION COMMISSION  
CLAIMS REGISTER BY PROGRAM  
FOR THE PERIOD OF OCTOBER 26, 2011 THRU NOVEMBER 17, 2011**

Voucher	Fund Class	Department	Date	Amount	Account	Payee
34941	19201	3000003	11/4/2011	\$717.71	532140	DEPARTMENT OF CENTRAL SERVICES
34942	19201	3000001	11/7/2011	\$36.00	555170	60 SOUTH CADDO CONS DISTRICT
34942	19201	3000001	11/7/2011	\$55.40	555170	71 SOUTH CADDO CONS DISTRICT
34942	19201	3000001	11/7/2011	\$100.00	555170	83 SOUTH CADDO CONS DISTRICT
34942	19201	3000001	11/7/2011	\$275.00	555170	92 SOUTH CADDO CONS DISTRICT
34942	19201	3000001	11/7/2011	\$400.00	555170	83 SOUTH CADDO CONS DISTRICT
34942	19201	3000001	11/7/2011	\$1,039.90	555170	2 SOUTH CADDO CONS DISTRICT
34942	19201	3000001	11/7/2011	\$2,540.41	555170	9 SOUTH CADDO CONS DISTRICT
34942	19201	3000001	11/7/2011	\$2,606.03	555170	5 SOUTH CADDO CONS DISTRICT
34943	19201	3000001	11/7/2011	\$136.97	555170	20 DEWEY COUNTY CONSERVATION DISTRICT
34943	19201	3000001	11/7/2011	\$458.59	555170	94 DEWEY COUNTY CONSERVATION DISTRICT
34943	19201	3000001	11/7/2011	\$540.53	555170	60 DEWEY COUNTY CONSERVATION DISTRICT
34943	19201	3000001	11/7/2011	\$2,139.59	555170	5 DEWEY COUNTY CONSERVATION DISTRICT
34943	19201	3000001	11/7/2011	\$2,340.16	555170	2 DEWEY COUNTY CONSERVATION DISTRICT
34944	19201	3000001	11/7/2011	\$62.10	555170	71 COMANCHE COUNTY CONSERVATION DISTRICT
34944	19201	3000001	11/7/2011	\$210.00	555170	74 COMANCHE COUNTY CONSERVATION DISTRICT
34944	19201	3000001	11/7/2011	\$2,392.82	555170	1 COMANCHE COUNTY CONSERVATION DISTRICT
34944	19201	3000001	11/7/2011	\$2,733.42	555170	5 COMANCHE COUNTY CONSERVATION DISTRICT
34945	19201	3000001	11/7/2011	\$20.55	555170	60 TILLMAN COUNTY CONSERVATION DISTRICT
34945	19201	3000001	11/7/2011	\$60.00	555170	74 TILLMAN COUNTY CONSERVATION DISTRICT
34945	19201	3000001	11/7/2011	\$2,090.00	555170	61 TILLMAN COUNTY CONSERVATION DISTRICT
34945	19201	3000001	11/7/2011	\$2,414.51	555170	2 TILLMAN COUNTY CONSERVATION DISTRICT
34946	19201	3000001	11/8/2011	\$52.96	555170	71 NOBLE COUNTY CONSERVATION DISTRICT
34946	19201	3000001	11/8/2011	\$1,243.65	555170	9 NOBLE COUNTY CONSERVATION DISTRICT
34946	19201	3000001	11/8/2011	\$2,774.61	555170	2 NOBLE COUNTY CONSERVATION DISTRICT
34947	19201	3000001	11/8/2011	\$375.00	555170	92 TULSA COUNTY CONSERVATION DISTRICT
34948	19201	3000001	11/8/2011	\$24.91	555170	80 GARFIELD CO CONSERVATION DISTRICT
34948	19201	3000001	11/8/2011	\$104.77	555170	71 GARFIELD CO CONSERVATION DISTRICT
34948	19201	3000001	11/8/2011	\$1,955.46	555170	1 GARFIELD CO CONSERVATION DISTRICT
34948	19201	3000001	11/8/2011	\$2,365.82	555170	5 GARFIELD CO CONSERVATION DISTRICT
34949	19201	3000001	11/8/2011	\$51.06	555170	69 MUSKOGEE COUNTY CONSERVATION DISTRICT
34949	19201	3000001	11/8/2011	\$325.00	555170	92 MUSKOGEE COUNTY CONSERVATION DISTRICT
34949	19201	3000001	11/8/2011	\$475.00	555170	64 MUSKOGEE COUNTY CONSERVATION DISTRICT
34949	19201	3000001	11/8/2011	\$1,953.97	555170	9 MUSKOGEE COUNTY CONSERVATION DISTRICT
34949	19201	3000001	11/8/2011	\$1,988.40	555170	1 MUSKOGEE COUNTY CONSERVATION DISTRICT
34950	19201	3000001	11/8/2011	\$793.00	555170	84 TALIHINA CONSERVATION DISTRICT
34950	19201	3000001	11/8/2011	\$1,740.00	555170	61 TALIHINA CONSERVATION DISTRICT
34950	19201	3000001	11/8/2011	\$1,947.90	555170	9 TALIHINA CONSERVATION DISTRICT
34950	19201	3000001	11/8/2011	\$3,657.25	555170	5 TALIHINA CONSERVATION DISTRICT
34951	19201	3000001	11/8/2011	\$70.68	555170	71 OKLAHOMA COUNTY CONSERVATION DISTRICT
34951	19201	3000001	11/8/2011	\$150.00	555170	74 OKLAHOMA COUNTY CONSERVATION DISTRICT
34951	19201	3000001	11/8/2011	\$1,697.25	555170	12 OKLAHOMA COUNTY CONSERVATION DISTRICT
34951	19201	3000001	11/8/2011	\$2,147.83	555170	2 OKLAHOMA COUNTY CONSERVATION DISTRICT
34951	19201	3000001	11/8/2011	\$2,368.30	555170	94 OKLAHOMA COUNTY CONSERVATION DISTRICT
34952	19201	3000001	11/8/2011	\$325.00	555170	92 NORTH FORK OF RED RIVER CONSERVATION
34952	19201	3000001	11/8/2011	\$458.59	555170	94 NORTH FORK OF RED RIVER CONSERVATION
34952	19201	3000001	11/8/2011	\$2,071.36	555170	1 NORTH FORK OF RED RIVER CONSERVATION
34952	19201	3000001	11/8/2011	\$2,402.41	555170	5 NORTH FORK OF RED RIVER CONSERVATION
34961	19201	3000001	11/8/2011	\$14.00	555170	82 MCCLAIN COUNTY CONSERVATION DISTRICT
34961	19201	3000001	11/8/2011	\$49.97	555170	20 MCCLAIN COUNTY CONSERVATION DISTRICT
34961	19201	3000001	11/8/2011	\$111.10	555170	71 MCCLAIN COUNTY CONSERVATION DISTRICT
34961	19201	3000001	11/8/2011	\$210.00	555170	74 MCCLAIN COUNTY CONSERVATION DISTRICT
34961	19201	3000001	11/8/2011	\$700.00	555170	61 MCCLAIN COUNTY CONSERVATION DISTRICT
34961	19201	3000001	11/8/2011	\$1,698.06	555170	7 MCCLAIN COUNTY CONSERVATION DISTRICT

**OKLAHOMA CONSERVATION COMMISSION  
CLAIMS REGISTER BY PROGRAM  
FOR THE PERIOD OF OCTOBER 26, 2011 THRU NOVEMBER 17, 2011**

Voucher	Fund Class	Department	Date	Amount	Account	Payee
34961	19201	3000001	11/8/2011	\$2,705.55	555170	2 MCCLAIN COUNTY CONSERVATION DISTRICT
34962	19201	3000001	11/8/2011	\$90.00	555170	74 OSAGE COUNTY CONSERVATION DISTRICT
34962	19201	3000001	11/8/2011	\$100.52	555170	71 OSAGE COUNTY CONSERVATION DISTRICT
34962	19201	3000001	11/8/2011	\$2,492.00	555170	5 OSAGE COUNTY CONSERVATION DISTRICT
34962	19201	3000001	11/8/2011	\$2,774.78	555170	2 OSAGE COUNTY CONSERVATION DISTRICT
34964	19201	3000001	11/8/2011	\$44.00	555170	72 KONAWA CONSERVATION DISTRICT
34964	19201	3000001	11/8/2011	\$48.42	555170	82 KONAWA CONSERVATION DISTRICT
34964	19201	3000001	11/8/2011	\$140.49	555170	71 KONAWA CONSERVATION DISTRICT
34964	19201	3000001	11/8/2011	\$148.00	555170	60 KONAWA CONSERVATION DISTRICT
34964	19201	3000001	11/8/2011	\$180.00	555170	74 KONAWA CONSERVATION DISTRICT
34964	19201	3000001	11/8/2011	\$1,431.75	555170	12 KONAWA CONSERVATION DISTRICT
34964	19201	3000001	11/8/2011	\$2,440.75	555170	6 KONAWA CONSERVATION DISTRICT
34964	19201	3000001	11/8/2011	\$2,499.02	555170	2 KONAWA CONSERVATION DISTRICT
34975	19201	3000001	11/9/2011	\$2,662.69	555170	3 CIMARRON COUNTY CONSERVATION DISTRICT
34975	19201	3000001	11/9/2011	\$3,111.03	555170	9 CIMARRON COUNTY CONSERVATION DISTRICT
34976	19201	3000001	11/9/2011	\$105.81	555170	26 HARMON COUNTY CONSERVATION DISTRICT
34976	19201	3000001	11/9/2011	\$157.06	555170	71 HARMON COUNTY CONSERVATION DISTRICT
34976	19201	3000001	11/9/2011	\$350.00	555170	92 HARMON COUNTY CONSERVATION DISTRICT
34976	19201	3000001	11/9/2011	\$2,162.47	555170	1 HARMON COUNTY CONSERVATION DISTRICT
34976	19201	3000001	11/9/2011	\$2,381.19	555170	5 HARMON COUNTY CONSERVATION DISTRICT
34977	19201	3000001	11/9/2011	\$56.55	555170	71 ROGERS COUNTY CONSERVATION DISTRICT
34977	19201	3000001	11/9/2011	\$64.00	555170	72 ROGERS COUNTY CONSERVATION DISTRICT
34977	19201	3000001	11/9/2011	\$90.00	555170	74 ROGERS COUNTY CONSERVATION DISTRICT
34977	19201	3000001	11/9/2011	\$259.69	555170	24 ROGERS COUNTY CONSERVATION DISTRICT
34977	19201	3000001	11/9/2011	\$800.00	555170	61 ROGERS COUNTY CONSERVATION DISTRICT
34977	19201	3000001	11/9/2011	\$1,143.24	555170	94 ROGERS COUNTY CONSERVATION DISTRICT
34977	19201	3000001	11/9/2011	\$2,720.27	555170	1 ROGERS COUNTY CONSERVATION DISTRICT
34977	19201	3000001	11/9/2011	\$2,905.30	555170	12 ROGERS COUNTY CONSERVATION DISTRICT
34977	19201	3000001	11/9/2011	\$3,777.42	555170	11 ROGERS COUNTY CONSERVATION DISTRICT
34978	19201	3000001	11/9/2011	\$30.00	555170	92 ARBUCKLE CONSERVATION DISTRICT
34978	19201	3000001	11/9/2011	\$77.18	555170	71 ARBUCKLE CONSERVATION DISTRICT
34978	19201	3000001	11/9/2011	\$3,241.36	555170	3 ARBUCKLE CONSERVATION DISTRICT
34979	19201	3000001	11/9/2011	\$41.00	555170	71 PAWNEE COUNTY CONSERVATION DISTRICT
34979	40000	3000001	11/9/2011	\$139.83	555170	86 PAWNEE COUNTY CONSERVATION DISTRICT
34979	19201	3000001	11/9/2011	\$678.19	555170	9 PAWNEE COUNTY CONSERVATION DISTRICT
34979	19201	3000001	11/9/2011	\$2,331.52	555170	1 PAWNEE COUNTY CONSERVATION DISTRICT
34980	19201	3000001	11/9/2011	\$41.35	555170	71 CHEROKEE COUNTY CONSERVATION DISTRICT
34980	19201	3000001	11/9/2011	\$64.36	555170	20 CHEROKEE COUNTY CONSERVATION DISTRICT
34980	19201	3000001	11/9/2011	\$150.00	555170	74 CHEROKEE COUNTY CONSERVATION DISTRICT
34980	19201	3000001	11/9/2011	\$800.00	555170	61 CHEROKEE COUNTY CONSERVATION DISTRICT
34980	19201	3000001	11/9/2011	\$2,139.55	555170	11 CHEROKEE COUNTY CONSERVATION DISTRICT
34981	19201	3000001	11/9/2011	\$94.16	555170	71 JOHNSTON COUNTY CONSERVATION DIST
34981	40000	3000001	11/9/2011	\$139.83	555170	86 JOHNSTON COUNTY CONSERVATION DIST
34981	19201	3000001	11/9/2011	\$1,278.88	555170	5 JOHNSTON COUNTY CONSERVATION DIST
34981	19201	3000001	11/9/2011	\$2,668.55	555170	2 JOHNSTON COUNTY CONSERVATION DIST
34982	19201	3000001	11/9/2011	\$2,249.91	555170	7 CRAIG COUNTY CONSERVATION DISTRICT
34982	19201	3000001	11/9/2011	\$2,368.30	555170	94 CRAIG COUNTY CONSERVATION DISTRICT
34982	19201	3000001	11/9/2011	\$2,909.06	555170	5 CRAIG COUNTY CONSERVATION DISTRICT
34983	19201	3000001	11/9/2011	\$37.00	555170	60 NOWATA COUNTY CONSERVATION DISTRICT
34983	19201	3000001	11/9/2011	\$400.00	555170	61 NOWATA COUNTY CONSERVATION DISTRICT
34983	19201	3000001	11/9/2011	\$1,086.45	555170	12 NOWATA COUNTY CONSERVATION DISTRICT
34983	19201	3000001	11/9/2011	\$2,914.15	555170	5 NOWATA COUNTY CONSERVATION DISTRICT
34984	19201	3000001	11/9/2011	\$82.32	555170	71 GRANT COUNTY CONSERVATION DISTRICT
34984	19201	3000001	11/9/2011	\$111.00	555170	72 GRANT COUNTY CONSERVATION DISTRICT

**OKLAHOMA CONSERVATION COMMISSION  
CLAIMS REGISTER BY PROGRAM  
FOR THE PERIOD OF OCTOBER 26, 2011 THRU NOVEMBER 17, 2011**

Voucher	Fund Class	Department	Date	Amount	Account	Payee
34984	19201	3000001	11/9/2011	\$1,817.14	555170	94 GRANT COUNTY CONSERVATION DISTRICT
34984	19201	3000001	11/9/2011	\$1,997.95	555170	9 GRANT COUNTY CONSERVATION DISTRICT
34984	19201	3000001	11/9/2011	\$2,312.98	555170	2 GRANT COUNTY CONSERVATION DISTRICT
34985	19201	3000001	11/9/2011	\$150.00	555170	74 MAYES COUNTY CONSERVATION DISTRICT
34985	19201	3000001	11/9/2011	\$420.00	555170	62 MAYES COUNTY CONSERVATION DISTRICT
34985	19201	3000001	11/9/2011	\$2,135.39	555170	3 MAYES COUNTY CONSERVATION DISTRICT
34986	19201	3000001	11/9/2011	\$22.20	555170	69 LOVE COUNTY CONSERVATION DISTRICT
34986	19201	3000001	11/9/2011	\$43.00	555170	62 LOVE COUNTY CONSERVATION DISTRICT
34986	19201	3000001	11/9/2011	\$59.10	555170	71 LOVE COUNTY CONSERVATION DISTRICT
34986	19201	3000001	11/9/2011	\$90.00	555170	74 LOVE COUNTY CONSERVATION DISTRICT
34986	40000	3000001	11/9/2011	\$139.83	555170	86 LOVE COUNTY CONSERVATION DISTRICT
34986	19201	3000001	11/9/2011	\$2,348.17	555170	7 LOVE COUNTY CONSERVATION DISTRICT
34986	19201	3000001	11/9/2011	\$3,160.78	555170	5 LOVE COUNTY CONSERVATION DISTRICT
34987	19201	3000001	11/9/2011	\$31.29	555170	71 KAY COUNTY CONSERVATION DISTRICT
34987	19201	3000001	11/9/2011	\$75.00	555170	76 KAY COUNTY CONSERVATION DISTRICT
34987	19201	3000001	11/9/2011	\$84.00	555170	83 KAY COUNTY CONSERVATION DISTRICT
34987	40000	3000001	11/9/2011	\$139.83	555170	86 KAY COUNTY CONSERVATION DISTRICT
34987	19201	3000001	11/9/2011	\$180.38	555170	69 KAY COUNTY CONSERVATION DISTRICT
34987	19201	3000001	11/9/2011	\$210.00	555170	74 KAY COUNTY CONSERVATION DISTRICT
34987	19201	3000001	11/9/2011	\$2,354.37	555170	7 KAY COUNTY CONSERVATION DISTRICT
34987	19201	3000001	11/9/2011	\$2,657.79	555170	5 KAY COUNTY CONSERVATION DISTRICT
34987	19201	3000001	11/9/2011	\$2,901.25	555170	2 KAY COUNTY CONSERVATION DISTRICT
34988	19201	3000001	11/9/2011	\$120.60	555170	71 PAYNE COUNTY CONSERVATION DISTRICT
34988	19201	3000001	11/9/2011	\$151.52	555170	69 PAYNE COUNTY CONSERVATION DISTRICT
34988	40000	3000001	11/9/2011	\$290.28	555170	88 PAYNE COUNTY CONSERVATION DISTRICT
34988	19201	3000001	11/9/2011	\$375.00	555170	88 PAYNE COUNTY CONSERVATION DISTRICT
34988	19201	3000001	11/9/2011	\$1,700.00	555170	61 PAYNE COUNTY CONSERVATION DISTRICT
34988	19201	3000001	11/9/2011	\$1,965.18	555170	1 PAYNE COUNTY CONSERVATION DISTRICT
34988	19201	3000001	11/9/2011	\$2,127.78	555170	5 PAYNE COUNTY CONSERVATION DISTRICT
34990	19201	3000001	11/15/2011	\$362.07	555170	46 LEFLORE COUNTY CONSERVATION DISTRICT
34990	19201	3000001	11/15/2011	\$1,399.45	555170	12 LEFLORE COUNTY CONSERVATION DISTRICT
34990	19201	3000001	11/15/2011	\$2,387.51	555170	2 LEFLORE COUNTY CONSERVATION DISTRICT
34990	19201	3000001	11/15/2011	\$3,765.44	555170	5 LEFLORE COUNTY CONSERVATION DISTRICT
35004	19201	3000001	11/15/2011	\$30.00	555170	82 CUSTER COUNTY CONSERVATION DISTRICT
35004	19201	3000001	11/15/2011	\$36.76	555170	80 CUSTER COUNTY CONSERVATION DISTRICT
35004	19201	3000001	11/15/2011	\$52.90	555170	71 CUSTER COUNTY CONSERVATION DISTRICT
35004	40000	3000001	11/15/2011	\$279.66	555170	86 CUSTER COUNTY CONSERVATION DISTRICT
35004	19201	3000001	11/15/2011	\$500.00	555170	61 CUSTER COUNTY CONSERVATION DISTRICT
35004	19201	3000001	11/15/2011	\$2,320.74	555170	2 CUSTER COUNTY CONSERVATION DISTRICT
35005	19201	3000001	11/15/2011	\$300.00	555170	92 CUSTER COUNTY CONSERVATION DISTRICT
35006	19201	3000001	11/15/2011	\$29.95	555170	67 OTTAWA COUNTY CONSERVATION DISTRICT
35006	19201	3000001	11/15/2011	\$61.82	555170	71 OTTAWA COUNTY CONSERVATION DISTRICT
35006	19201	3000001	11/15/2011	\$105.00	555170	74 OTTAWA COUNTY CONSERVATION DISTRICT
35006	40000	3000001	11/15/2011	\$139.83	555170	86 OTTAWA COUNTY CONSERVATION DISTRICT
35006	19201	3000001	11/15/2011	\$2,665.63	555170	2 OTTAWA COUNTY CONSERVATION DISTRICT
35007	19201	3000001	11/15/2011	\$100.00	555170	74 CANEY VALLEY CONSERVATION DISTRICT
35007	19201	3000001	11/15/2011	\$114.09	555170	79 CANEY VALLEY CONSERVATION DISTRICT
35007	19201	3000001	11/15/2011	\$115.04	555170	71 CANEY VALLEY CONSERVATION DISTRICT
35007	19201	3000001	11/15/2011	\$2,065.41	555170	1 CANEY VALLEY CONSERVATION DISTRICT
35007	19201	3000001	11/15/2011	\$2,368.15	555170	5 CANEY VALLEY CONSERVATION DISTRICT
35008	19201	3000001	11/15/2011	\$24.47	555170	20 GARVIN CONSERVATION DISTRICT
35008	19201	3000001	11/15/2011	\$36.99	555170	71 GARVIN CONSERVATION DISTRICT
35008	19201	3000001	11/15/2011	\$83.88	555170	20 GARVIN CONSERVATION DISTRICT
35008	40000	3000001	11/15/2011	\$139.83	555170	86 GARVIN CONSERVATION DISTRICT

**OKLAHOMA CONSERVATION COMMISSION  
CLAIMS REGISTER BY PROGRAM  
FOR THE PERIOD OF OCTOBER 26, 2011 THRU NOVEMBER 17, 2011**

Voucher	Fund Class	Department	Date	Amount	Account	Payee
35008	19201	3000001	11/15/2011	\$2,282.33	555170	6 GARVIN CONSERVATION DISTRICT
35008	19201	3000001	11/15/2011	\$2,334.41	555170	2 GARVIN CONSERVATION DISTRICT
35009	19201	3000001	11/15/2011	\$37.72	555170	81 WEST CADDO CONSERVATION DISTRICT
35009	19201	3000001	11/15/2011	\$2,513.26	555170	5 WEST CADDO CONSERVATION DISTRICT
35009	19201	3000001	11/15/2011	\$2,776.20	555170	2 WEST CADDO CONSERVATION DISTRICT
35010	19201	3000001	11/15/2011	\$51.59	555170	71 HARPER COUNTY CONSERVATION DISTRICT
35010	40000	3000001	11/15/2011	\$139.83	555170	86 HARPER COUNTY CONSERVATION DISTRICT
35010	19201	3000001	11/15/2011	\$475.00	555170	61 HARPER COUNTY CONSERVATION DISTRICT
35010	19201	3000001	11/15/2011	\$2,743.04	555170	2 HARPER COUNTY CONSERVATION DISTRICT
35011	40000	3000001	11/15/2011	\$139.83	555170	86 BLAINE COUNTY CONSERVATION DISTRICT
35011	19201	3000001	11/15/2011	\$195.00	555170	74 BLAINE COUNTY CONSERVATION DISTRICT
35011	19201	3000001	11/15/2011	\$750.00	555170	61 BLAINE COUNTY CONSERVATION DISTRICT
35011	19201	3000001	11/15/2011	\$2,119.16	555170	9 BLAINE COUNTY CONSERVATION DISTRICT
35011	19201	3000001	11/15/2011	\$2,170.99	555170	1 BLAINE COUNTY CONSERVATION DISTRICT
35012	19201	3000001	11/15/2011	\$700.00	555170	61 KIOWA COUNTY CONSERVATION DIST #76
35012	19201	3000001	11/15/2011	\$2,064.78	555170	1 KIOWA COUNTY CONSERVATION DIST #76
35012	19201	3000001	11/15/2011	\$2,191.01	555170	5 KIOWA COUNTY CONSERVATION DIST #76
35012	19201	3000001	11/15/2011	\$2,880.68	555170	6 KIOWA COUNTY CONSERVATION DIST #76
35013	19201	3000001	11/15/2011	\$41.00	555170	71 PAWNEE COUNTY CONSERVATION DISTRICT
35013	19201	3000001	11/15/2011	\$250.00	555170	92 PAWNEE COUNTY CONSERVATION DISTRICT
35013	19201	3000001	11/15/2011	\$2,331.52	555170	1 PAWNEE COUNTY CONSERVATION DISTRICT
35015	19201	3000001	11/16/2011	\$100.00	555170	62 ADAIR COUNTY CONSERVATION DISTRICT #67
35015	19201	3000001	11/16/2011	\$850.00	555170	61 ADAIR COUNTY CONSERVATION DISTRICT #67
35015	19201	3000001	11/16/2011	\$2,958.45	555170	9 ADAIR COUNTY CONSERVATION DISTRICT #67
35015	19201	3000001	11/16/2011	\$3,072.45	555170	3 ADAIR COUNTY CONSERVATION DISTRICT #67
35016	19201	3000001	11/16/2011	\$1,604.33	555170	5 WOODS COUNTY CONSERVATION DISTRICT
35016	19201	3000001	11/16/2011	\$1,636.80	555170	1 WOODS COUNTY CONSERVATION DISTRICT
35017	19201	3000001	11/16/2011	\$30.98	555170	81 GREER COUNTY CONSERVATION DIST
35017	19201	3000001	11/16/2011	\$115.81	555170	80 GREER COUNTY CONSERVATION DIST
35017	19201	3000001	11/16/2011	\$132.77	555170	71 GREER COUNTY CONSERVATION DIST
35017	40000	3000001	11/16/2011	\$139.83	555170	86 GREER COUNTY CONSERVATION DIST
35017	19201	3000001	11/16/2011	\$790.00	555170	61 GREER COUNTY CONSERVATION DIST
35017	19201	3000001	11/16/2011	\$2,119.30	555170	1 GREER COUNTY CONSERVATION DIST
35018	19201	3000001	11/16/2011	\$250.00	555170	92 COTTON COUNTY CONSERVATION DISTRICT
35018	19201	3000001	11/16/2011	\$2,153.00	555170	94 COTTON COUNTY CONSERVATION DISTRICT
35018	19201	3000001	11/16/2011	\$2,852.77	555170	2 COTTON COUNTY CONSERVATION DISTRICT
35018	19201	3000001	11/16/2011	\$2,999.08	555170	5 COTTON COUNTY CONSERVATION DISTRICT
35019	19201	3000001	11/16/2011	\$50.95	555170	83 STEPHENS COUNTY CONSERVATION DISTRICT
35019	19201	3000001	11/16/2011	\$90.00	555170	74 STEPHENS COUNTY CONSERVATION DISTRICT
35019	19201	3000001	11/16/2011	\$176.81	555170	71 STEPHENS COUNTY CONSERVATION DISTRICT
35019	19201	3000001	11/16/2011	\$2,045.35	555170	94 STEPHENS COUNTY CONSERVATION DISTRICT
35019	19201	3000001	11/16/2011	\$2,749.22	555170	5 STEPHENS COUNTY CONSERVATION DISTRICT
35019	19201	3000001	11/16/2011	\$2,778.37	555170	2 STEPHENS COUNTY CONSERVATION DISTRICT
35020	19201	3000001	11/16/2011	\$90.00	555170	74 DELAWARE CO CONSERVATION DISTRICT
35020	19201	3000001	11/16/2011	\$275.00	555170	92 DELAWARE CO CONSERVATION DISTRICT
35020	19201	3000001	11/16/2011	\$1,201.37	555170	12 DELAWARE CO CONSERVATION DISTRICT
35020	19201	3000001	11/16/2011	\$2,431.60	555170	1 DELAWARE CO CONSERVATION DISTRICT
35021	40000	3000001	11/16/2011	\$139.83	555170	86 CENTRAL N CANADIAN RIVER CONSERVATION
35021	19201	3000001	11/16/2011	\$269.13	555170	94 CENTRAL N CANADIAN RIVER CONSERVATION
35021	19201	3000001	11/16/2011	\$1,290.17	555170	9 CENTRAL N CANADIAN RIVER CONSERVATION
35021	19201	3000001	11/16/2011	\$1,917.35	555170	1 CENTRAL N CANADIAN RIVER CONSERVATION
35022	19201	3000001	11/16/2011	\$170.56	555170	69 CLEVELAND COUNTY CONSERVATION DISTRICT
35022	19201	3000001	11/16/2011	\$2,839.30	555170	2 CLEVELAND COUNTY CONSERVATION DISTRICT
35023	40000	3000001	11/16/2011	\$139.83	555170	86 LATIMER COUNTY CONSERVATION DISTRICT

**OKLAHOMA CONSERVATION COMMISSION  
CLAIMS REGISTER BY PROGRAM  
FOR THE PERIOD OF OCTOBER 26, 2011 THRU NOVEMBER 17, 2011**

Voucher	Fund Class	Department	Date	Amount	Account	Payee
35023	19201	3000001	11/16/2011	\$625.00	555170	61 LATIMER COUNTY CONSERVATION DISTRICT
35023	19201	3000001	11/16/2011	\$2,170.03	555170	9 LATIMER COUNTY CONSERVATION DISTRICT
35024	19201	3000001	11/16/2011	\$11.95	555170	67 CHECOTAH CONSERVATION DISTRICT #20
35024	19201	3000001	11/16/2011	\$44.00	555170	72 CHECOTAH CONSERVATION DISTRICT #20
35024	19201	3000001	11/16/2011	\$66.91	555170	71 CHECOTAH CONSERVATION DISTRICT #20
35024	19201	3000001	11/16/2011	\$200.00	555170	75 CHECOTAH CONSERVATION DISTRICT #20
35024	19201	3000001	11/16/2011	\$1,298.05	555170	2 CHECOTAH CONSERVATION DISTRICT #20
35025	19201	3000001	11/16/2011	\$56.75	555170	82 PUSHMATAHA CONSERVATION DISTRICT #44
35025	19201	3000001	11/16/2011	\$60.00	555170	74 PUSHMATAHA CONSERVATION DISTRICT #44
35025	19201	3000001	11/16/2011	\$78.49	555170	71 PUSHMATAHA CONSERVATION DISTRICT #44
35025	19201	3000001	11/16/2011	\$226.70	555170	69 PUSHMATAHA CONSERVATION DISTRICT #44
35025	19201	3000001	11/16/2011	\$1,059.28	555170	9 PUSHMATAHA CONSERVATION DISTRICT #44
35025	19201	3000001	11/16/2011	\$2,063.92	555170	1 PUSHMATAHA CONSERVATION DISTRICT #44
35068	19201	3000003	11/17/2011	\$765.16	532140	DEPARTMENT OF CENTRAL SERVICES
35069	19201	3000001	11/17/2011	\$371.76	555170	12 DEER CREEK CONSERVATION DISTRICT
35069	19201	3000001	11/17/2011	\$2,138.26	555170	11 DEER CREEK CONSERVATION DISTRICT
35069	19201	3000001	11/17/2011	\$2,529.37	555170	5 DEER CREEK CONSERVATION DISTRICT
35070	19201	3000001	11/17/2011	\$83.14	555170	71 VALLIANT CONSERVATION DISTRICT
35070	19201	3000001	11/17/2011	\$85.76	555170	79 VALLIANT CONSERVATION DISTRICT
35070	40000	3000001	11/17/2011	\$139.83	555170	86 VALLIANT CONSERVATION DISTRICT
35070	19201	3000001	11/17/2011	\$234.00	555170	69 VALLIANT CONSERVATION DISTRICT
35070	19201	3000001	11/17/2011	\$2,371.25	555170	7 VALLIANT CONSERVATION DISTRICT
35070	19201	3000001	11/17/2011	\$2,744.08	555170	2 VALLIANT CONSERVATION DISTRICT
35071	19201	3000001	11/17/2011	\$200.21	555170	71 TEXAS COUNTY CONSERVATION DISTRICT
35071	19201	3000001	11/17/2011	\$300.00	555170	92 TEXAS COUNTY CONSERVATION DISTRICT
35071	19201	3000001	11/17/2011	\$1,781.42	555170	9 TEXAS COUNTY CONSERVATION DISTRICT
35071	19201	3000001	11/17/2011	\$2,064.78	555170	1 TEXAS COUNTY CONSERVATION DISTRICT
35072	19201	3000001	11/17/2011	\$41.83	555170	71 KIAMICHI CONSERVATION DISTRICT
35072	40000	3000001	11/17/2011	\$139.83	555170	86 KIAMICHI CONSERVATION DISTRICT
35072	19201	3000001	11/17/2011	\$345.00	555170	74 KIAMICHI CONSERVATION DISTRICT
35072	19201	3000001	11/17/2011	\$715.00	555170	61 KIAMICHI CONSERVATION DISTRICT
35072	19201	3000001	11/17/2011	\$2,047.13	555170	1 KIAMICHI CONSERVATION DISTRICT
35072	19201	3000001	11/17/2011	\$2,796.94	555170	5 KIAMICHI CONSERVATION DISTRICT
35073	19201	3000001	11/17/2011	\$40.94	555170	71 MURRAY COUNTY CONSERVATION DISTRICT
35073	19201	3000001	11/17/2011	\$75.00	555170	74 MURRAY COUNTY CONSERVATION DISTRICT
35073	19201	3000001	11/17/2011	\$80.00	555170	70 MURRAY COUNTY CONSERVATION DISTRICT
35073	19201	3000001	11/17/2011	\$120.00	555170	74 MURRAY COUNTY CONSERVATION DISTRICT
35073	40000	3000001	11/17/2011	\$139.83	555170	86 MURRAY COUNTY CONSERVATION DISTRICT
35073	19201	3000001	11/17/2011	\$186.48	555170	69 MURRAY COUNTY CONSERVATION DISTRICT
35073	19201	3000001	11/17/2011	\$1,817.13	555170	94 MURRAY COUNTY CONSERVATION DISTRICT
35073	19201	3000001	11/17/2011	\$2,197.14	555170	6 MURRAY COUNTY CONSERVATION DISTRICT
35073	19201	3000001	11/17/2011	\$2,550.44	555170	2 MURRAY COUNTY CONSERVATION DISTRICT
35074	19201	3000001	11/17/2011	\$41.65	555170	71 LITTLE RIVER CONSERVATION DISTRICT
35074	19201	3000001	11/17/2011	\$44.00	555170	72 LITTLE RIVER CONSERVATION DISTRICT
35074	19201	3000001	11/17/2011	\$100.00	555170	62 LITTLE RIVER CONSERVATION DISTRICT
35074	19201	3000001	11/17/2011	\$103.01	555170	11 LITTLE RIVER CONSERVATION DISTRICT
35074	19201	3000001	11/17/2011	\$143.38	555170	26 LITTLE RIVER CONSERVATION DISTRICT
35074	19201	3000001	11/17/2011	\$325.00	555170	92 LITTLE RIVER CONSERVATION DISTRICT
35074	19201	3000001	11/17/2011	\$2,330.91	555170	2 LITTLE RIVER CONSERVATION DISTRICT
35074	19201	3000001	11/17/2011	\$3,165.55	555170	5 LITTLE RIVER CONSERVATION DISTRICT
35076	19201	3000001	11/17/2011	\$11.18	555170	72 LOGAN COUNTY CONSERVATION DISTRICT
35076	19201	3000001	11/17/2011	\$60.00	555170	74 LOGAN COUNTY CONSERVATION DISTRICT
35076	19201	3000001	11/17/2011	\$71.50	555170	71 LOGAN COUNTY CONSERVATION DISTRICT
35076	19201	3000001	11/17/2011	\$1,143.24	555170	94 LOGAN COUNTY CONSERVATION DISTRICT

**OKLAHOMA CONSERVATION COMMISSION  
CLAIMS REGISTER BY PROGRAM  
FOR THE PERIOD OF OCTOBER 26, 2011 THRU NOVEMBER 17, 2011**

Voucher	Fund Class	Department	Date	Amount	Account	Payee
35076	19201	3000001	11/17/2011	\$1,956.80	555170	9 LOGAN COUNTY CONSERVATION DISTRICT
35076	19201	3000001	11/17/2011	<u>\$2,708.76</u>	555170	5 LOGAN COUNTY CONSERVATION DISTRICT

**\$415,479.87 Field Services**

**Conservation Education**

34914	19201	3000004	11/4/2011	\$128.26	542120	AUTHORITY ORDER-PCARD
-------	-------	---------	-----------	----------	--------	-----------------------

**District Services**

34871	19201	3000005	10/26/2011	\$36.00	555170	99 TULSA COUNTY CONSERVATION DISTRICT
34915	40000	3000005	11/4/2011	\$55.50	521110	STANDING CAMERON L
34916	40000	3000005	11/4/2011	\$93.24	521110	IRBY MATTHEW W
35065	19201	3000005	11/16/2011	<u>\$179.00</u>	515660	FRANCIS TUTTLE TECHNOLOGY CENTER

**\$363.74 District Services**

**Abandoned Mine Land Reclamation**

34914	40000	4000001	11/4/2011	\$22.06	536140	AUTHORITY ORDER-PCARD
34914	40000	4000001	11/4/2011	\$53.56	536150	AUTHORITY ORDER-PCARD
34914	40000	4000005	11/4/2011	\$187.78	533140	AUTHORITY ORDER-PCARD
34914	40000	4000005	11/4/2011	\$71.17	536150	AUTHORITY ORDER-PCARD
34914	40000	4000005	11/4/2011	\$1,421.25	541120	AUTHORITY ORDER-PCARD
34917	40000	4000005	11/4/2011	\$276.95	521110	NUTTLE CHARLES E
34918	40000	4000005	11/4/2011	\$94.73	531130	AT & T MOBILITY NATIONAL ACCOUNT LLC
34932	40000	4000005	11/4/2011	\$7,501.05	545110	GOAD & SONS CONSTRUCTION LLC
34933	40000	4000005	11/4/2011	\$194.62	534290	COMDATA NETWORK INC
34965	40000	4000005	11/8/2011	\$296.93	521110	SPURLOCK DORSEY E
34966	40000	4000005	11/8/2011	\$511.16	521110	WEAVER WILLIAM C
34967	40000	4000005	11/8/2011	\$939.06	521110	GREEN PRESTON L
34970	40000	4000005	11/8/2011	\$35,466.02	545110	LLG CONST INC
34971	40000	4000005	11/8/2011	\$54.99	555170	88 ROGERS COUNTY CONSERVATION DISTRICT
35000	40000	4000005	11/10/2011	\$6,183.26	555170	99 ROGERS COUNTY CONSERVATION DISTRICT
35038	40000	4000005	11/16/2011	<u>\$19.09</u>	531110	FEDEX FREIGHT EAST INC

**\$53,293.68 Abandoned Mine Land Reclamation**

**Water Quality**

34886	24500	5000001	10/27/2011	\$85.15	555170	99 DELAWARE CO CONSERVATION DISTRICT
34886	40000	5000001	10/27/2011	\$280.00	555170	99 DELAWARE CO CONSERVATION DISTRICT
34905	40000	5000001	11/2/2011	\$1,054.23	541110	OKLAHOMA DEPARTMENT OF CORRECTIONS
34914	40000	5000001	11/4/2011	\$18.00	522150	AUTHORITY ORDER-PCARD
34914	40000	5000001	11/4/2011	\$80.00	531260	AUTHORITY ORDER-PCARD
34914	40000	5000001	11/4/2011	\$448.41	535120	AUTHORITY ORDER-PCARD
34914	40000	5000001	11/4/2011	\$506.25	535120	AUTHORITY ORDER-PCARD
34914	40000	5000001	11/4/2011	\$720.75	535120	AUTHORITY ORDER-PCARD
34914	40000	5000001	11/4/2011	\$177.88	535180	AUTHORITY ORDER-PCARD
34914	40000	5000001	11/4/2011	\$67.70	536140	AUTHORITY ORDER-PCARD
34914	40000	5000001	11/4/2011	\$69.14	536140	AUTHORITY ORDER-PCARD

**OKLAHOMA CONSERVATION COMMISSION  
CLAIMS REGISTER BY PROGRAM  
FOR THE PERIOD OF OCTOBER 26, 2011 THRU NOVEMBER 17, 2011**

Voucher	Fund Class	Department	Date	Amount	Account	Payee
34914	40000	5000001	11/4/2011	\$168.80	536140	AUTHORITY ORDER-PCARD
34914	40000	5000001	11/4/2011	\$43.22	536150	AUTHORITY ORDER-PCARD
34914	40000	5000001	11/4/2011	\$141.00	536150	AUTHORITY ORDER-PCARD
34914	40000	5000001	11/4/2011	\$735.00	536150	AUTHORITY ORDER-PCARD
34914	40000	5000001	11/4/2011	\$736.00	536190	AUTHORITY ORDER-PCARD
34914	40000	5000001	11/4/2011	\$559.35	537210	AUTHORITY ORDER-PCARD
34914	40000	5000001	11/4/2011	\$955.72	537210	AUTHORITY ORDER-PCARD
34918	40000	5000001	11/4/2011	\$347.36	531130	AT & T MOBILITY NATIONAL ACCOUNT LLC
34919	40000	5000001	11/4/2011	\$1,070.91	555170	88 CREEK COUNTY CONSERVATION DISTRICT
34921	40000	5000001	11/4/2011	\$72.64	531130	VERIZON WIRELESS
34941	40000	5000001	11/4/2011	\$543.80	532140	DEPARTMENT OF CENTRAL SERVICES
34941	40000	5000001	11/4/2011	\$1,258.71	532140	DEPARTMENT OF CENTRAL SERVICES
34941	40000	5000001	11/4/2011	\$10,599.87	532140	DEPARTMENT OF CENTRAL SERVICES
34956	40000	5000001	11/8/2011	\$310.50	521120	SHAW KIMBERLY R
34956	40000	5000001	11/8/2011	\$464.47	521150	SHAW KIMBERLY R
34968	40000	5000001	11/8/2011	\$69.00	521120	CARTER NATHAN R
34968	40000	5000001	11/8/2011	\$4.52	521140	CARTER NATHAN R
34969	40000	5000001	11/8/2011	\$100.00	555170	NORTH CADDO CONSERVATION DISTRICT
34974	40000	5000001	11/8/2011	\$44,011.99	545110	UNIVERSITY OF OKLAHOMA
34991	40000	5000001	11/10/2011	\$600.00	555170	88 DELAWARE CO CONSERVATION DISTRICT
34992	40000	5000001	11/10/2011	\$60.00	533140	FUZZELLS BUSINESS EQUIPMENT
34993	40000	5000001	11/10/2011	\$4,510.00	532110	LINCOLN PLAZA OFFICE BUILDING LLC
34994	40000	5000001	11/10/2011	\$4.62	533140	IKON OFFICE SOLUTIONS
34994	40000	5000001	11/10/2011	\$125.30	533140	IKON OFFICE SOLUTIONS
35001	40000	5000001	11/10/2011	\$1,800.00	555170	88 ADAIR COUNTY CONSERVATION DISTRICT #67
35034	40000	5000001	11/16/2011	\$300.00	555170	88 BLAINE COUNTY CONSERVATION DISTRICT
35035	25000	5000001	11/16/2011	\$30.00	555170	88 CHEROKEE COUNTY CONSERVATION DISTRICT
35035	40000	5000001	11/16/2011	\$1,050.00	555170	88 CHEROKEE COUNTY CONSERVATION DISTRICT
35036	40000	5000001	11/16/2011	\$37.49	531110	NICHOLS HILL PACK-N-SHIP
35037	40000	5000001	11/16/2011	\$9,580.00	531150	GALT FOUNDATION
35043	40000	5000001	11/16/2011	\$12.96	531130	AT&T CORPORATION
35064	40000	5000001	11/16/2011	\$190.00	555170	76 CHEROKEE COUNTY CONSERVATION DISTRICT
35068	40000	5000001	11/17/2011	\$751.49	532140	DEPARTMENT OF CENTRAL SERVICES
35068	40000	5000001	11/17/2011	\$991.57	532140	DEPARTMENT OF CENTRAL SERVICES
35068	40000	5000001	11/17/2011	<u>\$7,777.04</u>	532140	DEPARTMENT OF CENTRAL SERVICES

**\$93,520.84 Water Quality**

**Wetlands**

34972	40000	5000002	11/8/2011	\$4,558.36	545110	UNIVERSITY OF OKLAHOMA
34973	40000	5000002	11/8/2011	\$3,051.05	545110	UNIVERSITY OF OKLAHOMA
35061	40000	5000002	11/16/2011	\$3,081.93	545110	UNIVERSITY OF OKLAHOMA
35062	40000	5000002	11/16/2011	<u>\$3,801.23</u>	545110	UNIVERSITY OF OKLAHOMA

**\$14,492.57 Wetlands**

**Cost Share - Locally Led**

34911	25000	5000004	11/3/2011	\$467.50	554230	28 PAWNEE COUNTY CONSERVATION DISTRICT
35027	25000	5000004	11/16/2011	\$2,000.00	554230	1 MARC BARNETT
35045	25000	5000004	11/16/2011	\$1,400.00	554230	1 ARTHUR D WATSON
35049	25000	5000004	11/16/2011	\$154.38	554230	13 JARED MILLER

**OKLAHOMA CONSERVATION COMMISSION  
CLAIMS REGISTER BY PROGRAM  
FOR THE PERIOD OF OCTOBER 26, 2011 THRU NOVEMBER 17, 2011**

Voucher	Fund Class	Department	Date	Amount	Account	Payee
35049	25000	5000004	11/16/2011	\$862.50	554230	13 JARED MILLER
35050	25000	5000004	11/16/2011	\$75.94	554230	23 EVERETT E KING
35050	25000	5000004	11/16/2011	\$885.00	554230	13 EVERETT E KING
35051	25000	5000004	11/16/2011	\$2,000.00	554230	1 LH DIEL
35052	25000	5000004	11/16/2011	\$2,000.00	554230	1 FRED OBERLENDER
35053	25000	5000004	11/16/2011	\$637.50	554230	13 BEVERLY SUE RENDEL
35053	25000	5000004	11/16/2011	\$720.75	554230	23 BEVERLY SUE RENDEL
35054	25000	5000004	11/16/2011	<u>\$1,000.00</u>	554230	1 LARRY NICHOLS

***\$12,203.57 Cost Share - Locally Led***

***Cost Share - Priority Watershed***

34883	40000	5000009	10/27/2011	\$1,000.00	554230	21 GAY LECK
34884	40000	5000011	10/27/2011	\$381.20	554230	23 CHERI ANDERSON
34884	40000	5000011	10/27/2011	\$626.50	554230	13 CHERI ANDERSON
34884	40000	5000011	10/27/2011	\$751.44	554230	22 CHERI ANDERSON
34884	40000	5000011	10/27/2011	\$894.24	554230	5 CHERI ANDERSON
34885	40000	5000011	10/27/2011	\$8,490.70	554230	39 WESTIN LAKE
34893	40000	5000011	11/1/2011	\$7,410.40	554230	1 DANNY DUNCAN
34894	40000	5000011	11/1/2011	\$1,200.00	554230	1 DEANNA KAUFFELD
34995	40000	5000011	11/10/2011	\$1,546.00	554230	13 LARRY TROYER
34995	40000	5000011	11/10/2011	\$1,734.48	554230	23 LARRY TROYER
34995	40000	5000011	11/10/2011	\$1,843.60	554230	22 LARRY TROYER
34996	40000	5000012	11/10/2011	\$2,470.13	554230	22 DENNIE R RITCHIE
34997	40000	5000012	11/10/2011	\$306.02	554230	23 BILLY ELLIOTT
34997	40000	5000012	11/10/2011	\$420.41	554230	22 BILLY ELLIOTT
34997	40000	5000012	11/10/2011	\$741.06	554230	13 BILLY ELLIOTT
34998	40000	5000012	11/10/2011	\$614.76	554230	1 JAMES BLEVINS
34999	40000	5000012	11/10/2011	<u>\$2,610.72</u>	554230	5 PERRY HESTON

***\$33,041.66 Cost Share - Priority Watershed***

***CREP***

34918	25000	5000014	11/4/2011	\$32.32	531130	AT & T MOBILITY NATIONAL ACCOUNT LLC
34941	25000	5000014	11/4/2011	\$915.49	532140	DEPARTMENT OF CENTRAL SERVICES
35043	25000	5000014	11/16/2011	\$0.18	531130	AT&T CORPORATION
35068	25000	5000014	11/17/2011	<u>\$822.93</u>	532140	DEPARTMENT OF CENTRAL SERVICES

***\$1,770.92 CREP***

***\$1,520,675.41 Total Claims Paid***



Company Name State of Oklahoma

Post Date Between 2011-10-01 00:00:00 and 2011-10-31 23:59:59

Report Owner Coffman, Steven

Report Time 2011-11-18 09:08:38

Transaction Type One of: Cash advance or Misc Credit or Misc Debit or Purchase

### Cardholder Statement with Allocation

CH Full Name

Card Last 4 Digits

Txn Number  
Alloc Amount

Purchase Date

Post Date  
GL Allocation

Vendor Name  
SW Contract #

Total Amount  
Item Description

Gibson, Sheryl  
2224

TXN00098973  
56.94

09/30/2011

10/03/2011  
536150-1000-19201-1000001-----64500--  
6459003190-002-001-001

DMI DELL K-12/GOVT

56.94  
DMI DELL K-12/GOVT - 2G Ram

TXN00098643  
43.22

10/05/2011

10/05/2011  
536150-1000-40000-5000001-664600000----  
64500--6459003190-001-001-001

DMI DELL K-12/GOVT

43.22  
DMI DELL K-12/GOVT - Ink

TXN00101563  
24.91

10/08/2011

10/10/2011  
536150-1000-19201-1000005-----64500--  
6459003190-005-001-001

DMI DELL K-12/GOVT

24.91  
DMI DELL K-12/GOVT - wireless mouse

TXN00101803  
71.17

10/10/2011

10/11/2011  
536150-1000-40000-4000005-152520000----  
64500--6459003190-012-001-001

AMAZON MKTPLACE PMTS

71.17  
AMAZON MKTPLACE PMTS - maint. cartridge

TXN00102437  
193.90

10/11/2011

10/12/2011  
536140-1000-19201-1000001-----64500--  
6459003190-002-001-001

XPEDX-INTL PAPER

193.90  
XPEDX-INTL PAPER - Paper

TXN00104409  
1,421.25

10/15/2011

10/17/2011  
541120-1000-40000-4000005-152520000----  
64500--6459003190-012-001-001

HP DIRECT-PUBLICSECTOR

1,421.25  
HP DIRECT-PUBLICSECTOR - Printer

TXN00104668  
187.78

10/17/2011

10/18/2011  
533140-1000-40000-4000005-152520000----  
64500--6459003190-012-001-001

GRAPHIC RESOURCES

187.78  
GRAPHIC RESOURCES - printer repair

Coffman, Steven

1 of 7

2011-11-18 09:08:38

Exhibit 2

December 5, 2011

CHI Full Name	Card Last 4 Digits	Txn Number	Alloc Amount	Purchase Date	Post Date	GL Allocation	Vendor Name	SW Contract #	Item Description	Total Amount
		TXN00109070	56.94	10/29/2011	10/31/2011	536150-1000-40000-1000002-152520000----	DMI DELL K-12/GOVT		DMI DELL K-12/GOVT - RAM	56.94
			2,056.11			64500--6459003190-003-001-002				

count: 8

2,056.11

count: 8

CH Full Name Card Last 4 Digits Txn Number Alloc Amount	Purchase Date	Post Date GL Allocation	Vendor Name SW Contract #	Total Amount Item Description
Mockabee, Kelly 8642 TXN00100745	10/05/2011	10/07/2011 536140-1000-40000-4000001-152520000---- 64500--6459003190-011-001-001	Staples Contra00710004	47.68 Staples Contra00710004 - expanding wallet files
TXN00100745	10/05/2011	10/07/2011 536110-1000-19201-1000001-----64500-- 6459003190-002-001-001	Staples Contra00710004	47.68 Staples Contra00710004 - cups & sugar
TXN00101564	10/07/2011	10/10/2011 536150-1000-40000-4000001-152520000---- 64500--6459003190-011-001-001	Staples Contra00710004	38.44 Staples Contra00710004 - cd-rw
TXN00102438	10/10/2011	10/12/2011 536150-1000-40000-5000001-664600000---- 64500--6459003190-001-001-001	Staples Contra00710004	735.00 Staples Contra00710004 - toner
TXN00102439	10/10/2011	10/12/2011 536140-1000-40000-5000001-664600000---- 64500--6459003190-001-001-001	Staples Contra00710004	125.00 Staples Contra00710004 - pencils
TXN00102440	10/10/2011	10/12/2011 536140-1000-40000-5000001-664600000---- 64500--6459003190-001-001-001	Staples Contra00710004	43.80 Staples Contra00710004 - pencils & sharpies
TXN00104410	10/13/2011	10/17/2011 536140-1000-40000-5000001-664600000---- 64500--6459003190-001-001-001	Staples Contra00710004	69.14 Staples Contra00710004 - appt. books
TXN00107047	10/24/2011	10/25/2011 536140-1000-19201-1000001-----64500-- 6459003190-002-001-001	BATTERIES PLUS 093	44.95 BATTERIES PLUS 093 - batteries

CH Full Name

Card Last 4 Digits

TXN Number	Allec Amount	Purchase Date	GL Allocation	Post Date	Vendor Name SW Contract #	Total Amount	Item Description
TXN00107493	67.70	10/24/2011	536140-1000-40000-5000001-664600000- 64500-6459003190-001-001-001	10/26/2011	Staples Contra00710004	82.82	Staples Contra00710004 - folders & calendars
TXN00107493	15.12	10/24/2011	536150-1000-40000-4000001-152520000- 64500-6459003190-011-001-001	10/26/2011	Staples Contra00710004	82.82	Staples Contra00710004 - Cleaning cloths
TXN00107938	150.00	10/25/2011	536150-1000-19201-1000001-64500- 6459003190-002-001-001	10/27/2011	Staples Contra00710004	150.00	Staples Contra00710004 - toner
TXN00107940	141.00	10/25/2011	536150-1000-40000-5000001-664600000- 64500-6459003190-001-001-001	10/27/2011	Staples Contra00710004	141.00	Staples Contra00710004 - toner
TXN00107941	128.26	10/25/2011	542120-1000-19201-3000004-64500- 6459003190-009-001-001	10/27/2011	ACORN NATURALISTS-INTE	128.26	ACORN NATURALISTS-INTE - ed material
count: 13							
1,606.09							
count: 13							
1,606.09							

CH Full Name Card Last 4 Digits Txn Number Alloc Amount	Purchase Date	Post Date GL Allocation	Vendor Name SW Contract #	Total Amount Item Description
Tramell, Brooks 0945 TXN00099642 177.88	10/04/2011	10/05/2011 535180-1000-40000-5000001-664600000---- 64500--6459003190-001-001-001	CABELA'S PROMOTIONS INC	177.88 CABELA'S PROMOTIONS INC - Seat Cover & Guide Bag
TXN00100155 720.75	10/05/2011	10/06/2011 535120-1000-40000-5000001-664600000---- 64500--6459003190-001-001-001	CABELA'S PROMOTIONS INC	720.75 CABELA'S PROMOTIONS INC - waders
TXN00100744 80.00	10/05/2011	10/07/2011 531260-1000-40000-5000001-664600000---- 64500--6459003190-001-001-001	SOIL / WATER CONSERV SOC	80.00 SOIL / WATER CONSERV SOC - membership
TXN00103539 50.00	10/13/2011	10/14/2011 542120-1000-19201-1000001-----64500-- 6459003190-002-001-001	DEPARTMENT OF WILDLIFE	50.00 DEPARTMENT OF WILDLIFE - guide books
TXN00105660 955.72	10/18/2011	10/20/2011 537210-1000-40000-5000001-664600000---- 64500--6459003190-001-001-001	HACH COMPANY	955.72 HACH COMPANY - reagents
TXN00107046 18.00	10/25/2011	10/25/2011 522150-1000-40000-5000001-664600000---- 64500--6459003190-001-001-001	OKAPP	18.00 OKAPP - registration
TXN00107048 199.99	10/24/2011	10/25/2011 535120-1000-40000-5000001-664600000---- 64500--6459003190-001-001-001	MACKSPW.COM	199.99 MACKSPW.COM - waders
TXN00107492 736.00	10/24/2011	10/26/2011 536190-1000-40000-5000001-664600000---- 64500--6459003190-001-001-001	ACORN NATURALISTS-INTE	736.00 ACORN NATURALISTS-INTE - ed supplies

CH Full Name Card Last 4 Digits	Alloc Amount	Purchase Date	Post Date	GL Allocation	Vendor Name SW Contract #	Total Amount Item Description
TXN00107494	248.42	10/25/2011	10/26/2011	535120-1000-40000-50000001-664600000- 64500--6459003190-001-001-001	CABELA'S PROMOTIONS INC	248.42 CABELA'S PROMOTIONS INC - waders & gloves
TXN00107939	506.25	10/26/2011	10/27/2011	535120-1000-40000-50000001-664600000- 64500--6459003190-001-001-001	CABELA'S PROMOTIONS INC	506.25 CABELA'S PROMOTIONS INC - waders
TXN00109071	559.35	10/28/2011	10/31/2011	537210-1000-40000-50000001-664600000- 64500--6459003190-001-001-001	HACH COMPANY	559.35 HACH COMPANY - Buffer
count: 11						
4,252.36						
count: 11						
7,914.56						
report count: 32						

CH Full Name

Card Last 4 Digits

Txn Number

Alloc Amount

Purchase Date

Post Date

GL Allocation

Vendor Name

SW Contract #

Total Amount

Item Description

Authorized Signature

Print Name

Date

Authorized Signature 2

Print Name

Date

Oklahoma Conservation Commission  
 Summary of Bond Program  
 as of 11/18/2011

DEPARTMENT CODE	NAME	BOND AMOUNT	TOTAL EXPENITURES	ENDING BALANCE
9909001	Rehabilitation of Dams	8,800,000.00	3,009,808.85	5,790,191.15
9909003	Repair of Dams	7,100,000.00	5,706,027.39	1,393,972.61
9909004	Kingfisher Flood Protection	4,000,000.00	698,897.77	3,301,102.23
9909002	Sugar Creek FEMA and CREP Support	3,000,000.00	490,580.28	2,509,419.72
9909005	Conservation Cost Share	2,100,000.00	1,305,404.52	794,595.48
	Total	<u>25,000,000.00</u>	<u>11,210,718.81</u>	<u>13,789,281.19</u>



**OKLAHOMA CONSERVATION COMMISSION  
FY-2012 FINANCIAL STATEMENT  
November 18, 2011**

	<u>FUND</u>	<u>ACCOUNT</u>	<u>ALLOCATION</u>	<u>EXPENDITURE</u>	<u>ENCUMBRANCE</u>	<u>BALANCE</u>	<u>CASH</u>
<b><u>ADMINISTRATION</u></b>							
	19201	12	\$2,949,251.00	\$1,155,811.37	\$1,363,875.86	\$429,563.77	
<b><u>WATERSHED PLANNING</u></b>							
	19201	20	\$590,000.00	\$160,476.72	\$62,834.58	\$366,688.70	
<b><u>FIELD SERVICE</u></b>							
	19201	30	\$6,022,433.00	\$2,004,643.43	\$3,663,476.15	\$354,313.42	
<b>TOTAL STATE FUNDS</b>							
	19201		\$9,561,684.00	\$3,320,931.52	\$5,090,186.59	\$1,150,565.89	
<b><u>REVOLVING FUNDS</u></b>							
	Small Watershed -						\$5,161.92
	GIS Fund - 11	20500 / 11	\$50,000.00	\$717.30	\$0.00	\$49,282.70	
	GIS Fund - 12	20500 / 12	\$30,000.00	\$6,175.03	\$432.33	\$23,392.64	\$24,170.24
	OCC Infrastructure / Rehab / 11	21500 / 20	\$3,051,535.00	\$1,793,651.34	\$250.00	\$1,257,633.66	
	OCC Infrastructure / Rehab / 12	21500 / 20	\$1,600,000.00	\$7,754.84	\$463,942.42	\$1,128,302.74	\$1,586,562.37
	Carbon Sequestration /	220 / 50					\$7,653.25
	Donation Fund / Admin / 11	24500 / 10	\$75,000.00	\$8,527.16	\$250.00	\$66,222.84	
	Donation Fund / Admin / 12	24500 / 10	\$60,000.00	\$2,975.24	\$154.76	\$56,870.00	\$4,087.61
							\$198,250.94
	Donation Fund / Field Service / 11	24500 / 30	\$3,000.00	\$0.00	\$0.00	\$3,000.00	
	Donation Fund / Field Service / 12	24500 / 30	\$2,768.00	\$0.00	\$0.00	\$2,768.00	\$14,235.35
	Donation Fund / AML / 11	24500 / 40	\$25,000.00	\$0.00	\$0.00	\$25,000.00	\$41,865.85
	Donation Fund / WQ / 11	24500 / 50	\$100,000.00	\$318.23	\$356.77	\$99,325.00	
	Donation Fund / WQ / 12	24500 / 50	\$52,000.00	\$112.14	\$0.00	\$51,887.86	\$111,565.02
	OCC Infrastructure / O & M / 11	25000 / 20	\$300,000.00	\$28,216.98	\$96.90	\$271,686.12	
	OCC Infrastructure / F Serv / 12	25000 / 30	\$788,310.00	\$409,612.42	\$0.00	\$378,697.58	
	OCC Infrastructure / Cshare / 11	25000 / 50	\$1,710,000.00	\$1,389,846.56	\$7,754.93	\$312,398.51	
	OCC Infrastructure / Cshare / 12	25000 / 50	\$2,298,000.00	\$90,879.49	\$47,539.89	\$2,159,580.62	\$3,830,169.55
<b><u>FEDERAL FUNDS</u></b>							
	40000 / 11		\$27,432,832.00	\$12,257,534.83	\$1,980,264.76	\$13,195,032.41	
	40000 / 12		\$17,988,069.00	\$2,304,936.07	\$6,330,588.29	\$9,352,544.64	\$2,756,880.16
	Tar Creek - 41000						\$12.58
	Sugar Creek - 41500 / 11		\$2,130,000.00	\$155,835.73	\$42,351.58	\$1,931,812.69	
	Sugar Creek - 41500 / 12		\$1,662,768.00	\$150,952.39	\$12,694.12	\$1,499,121.49	\$3,457,150.70
	ARRA / Watershed / 49000 / 10	20	\$14,625,000.00	\$1,903,752.65	\$0.00	\$12,721,247.35	
	ARRA / Watershed / 49000 / 11	20	\$7,400,000.00	\$2,609,824.81	\$1,693,207.53	\$3,096,967.66	
	ARRA / Watershed / 49000 / 12	20	\$4,300,000.00	\$7,115.84	\$1,592,916.50	\$2,699,967.66	
	ARRA / Field Services / 49000 / 10	30	\$100,000.00	\$95,000.00	\$0.00	\$5,000.00	
	ARRA / Field Services / 49000 / 11	30	\$60,000.00	\$0.00	\$0.00	\$60,000.00	
	ARRA / Water Quality / 49000 / 10	50	\$2,000,000.00	\$332,371.50	\$0.00	\$1,667,628.50	
	ARRA / Water Quality / 49000 / 11	50	\$2,560,000.00	\$178,401.47	\$2,333,990.39	\$47,608.14	
	ARRA / Water Quality / 49000 / 12	50	\$3,950,000.00	\$1,644.75	\$2,734,304.26	\$1,214,051.00	
<b>TOTAL ARRA FUNDS</b>							
	49000 / 10		\$16,725,000.00	\$2,331,124.15	\$0.00	\$14,393,875.85	\$1,288,992.69
	49000 / 11		\$11,410,000.00	\$2,611,469.56	\$4,427,511.79	\$4,371,018.66	
	49000 / 12		\$8,250,000.00	\$8,760.59	\$4,327,220.76	\$3,914,018.66	

# OCC AGREEMENTS FOR CONSIDERATION

OCC PARTY ID	NO	PURPOSE	AMENDMENT PURPOSE	BEGIN DATE	END DATE	AMOUNT TO OCC	AMOUNT FROM OCC	FUNDING SOURCE
a	NRCS	68-7335-2-02	to provide engineering assistance to the Commission's AML Program including planning, design and construction management.	11/16/2011	9/30/2013		\$70,000.00	OSM
b	Scenic Rivers Commission, OK	OCC-292	The OSRC will provide access and other support for the 2009 ARRA funded Illinois River Streambank Stabilization Project.	12/1/2011	9/30/2012			na

**OKLAHOMA CONSERVATION COMMISSION  
ADMINISTRATION STAFF - SUMMARY OF ACTIVITIES  
December 5, 2011**

**Administration**

- Attended a meeting in Joplin, Missouri to discuss the Grand Lake Watershed
- Attended a meeting of the Ag Group
- Met with the American Farmers and Ranchers Policy Committee
- Attended the Oklahoma Farm Bureau meeting and banquet
- Attended a briefing on a Biojet Fuels Refinery site in Enid
- Participated in the OACD Area 1, 3, and 5 meetings
- Worked with the Okmulgee Co CD and USDA on a leasing issue
- Worked with the AML Program to prepare an agreement for NRCS to provide engineering services to AML
- Provided input to OACD on the new conservation leadership program
- Did follow-up work on the proposed boundary change for the Kiowa Co and the Washita Co Conservation Districts
- Worked with Commission staff, District staff and NRCS to complete the first Sugar Creek FEMA construction contract and initiate the second construction contract.

**Information Officer**

- Continued technical management of and updating information on OCC's web page. Created and published the following stories:
  - OACD/OACD Auxiliary College Scholarships
  - Watershed Assessment Team Commended
  - Northwest Oklahoma Land and Range Contest
  - Denim & Lace: Women In Agriculture Conference
- Assisted districts and distributed entry materials for the Excellence in Communications Awards program.
- Assisted OACD and conservation districts with info about the OACD Conservation Awards
- Prepared printed programs for all Area Meetings. Attended all Area Meetings and took photographs and managed audio/visual equipment. Assisted presenters with preparation and presentation of PowerPoint presentations. Distributed photos and news releases following the meetings via the web page.
- Setup and staffed a booth at the Oklahoma Farm Bureau Convention and Trade Show.
- Continued using Twitter to communicate messages and news about conservation-related activities under the name OK Conservation Cmsn at the address @conservation\_ok.
- Continued wider promotion of the Twitter account.
- Worked on creation of a Social Media/Social Networking policy for OCC.
- Monitored Oklahoma City and Tulsa newspapers.
- Continued arrangements for farm shows and convention displays.
- Deposited OCC publications with the Publication Clearinghouse of the Dept. of Libraries in compliance with statutes.

### **Tribal Outreach Coordinator**

#### **Kiowa Tribal Conservation District and Water Resources Board (KTCD) -**

- Continue to work in resolving several coordination issues with new employee.
- Worked with the Indian Nations Conservation Alliance (INCA) to secure on the ground assistance for the KTCD. Michele Bigfoot will be working through INCA and with the KTCD.

#### **Coordinated Partnership with the Oklahoma Tribal Conservation Advisory Council (OTCAC) –**

- Facilitated a tribal meeting at the Eastern Shawnee tribal complex outside of Seneca, MO (in OK). Nine tribes from NE OK were represented. Approximately 65 people attended. Shirley Hudson, District Secretary for the Ottawa Co. CD, gave a super presentation on the state cost share program and services available with the CD. Carrie Silverhorn, Eastern Shawnee artist, was present and honored for her Native American Heritage Month artwork that was selected for the NRCS poster. This poster is in 3000 offices across the U.S.
- An similar meeting will be held on 11/16/11 in Ada for the Chickasaw Nation and others.
- Worked with NRCS and OTCAC on upcoming meetings and meetings for next year. This includes the partnering on booth/display costs at major meetings in 2011-2012. OTCAC, working with various partners like OCC, has sponsored over 500 meetings, conferences and field days since 2003. OCC is a prominent partner at these meetings.
- OTCAC sponsored a field day with the Iowa Nation (Perkins, OK) on 10/26.

#### **Oklahoma Prescribed Burn Association (OPBA -Tentative)/Liability Insurance –**

- On October 28, I met with John Weir, OSU Extension, and Ron Voth, OK Prescribed Burn Association, concerning next steps in the formation of OPBA and the opportunity to get liability insurance.
- Currently working to develop the structure for the formation of the OPBA (ex. position description for Executive Director; bylaws...).

#### **Oklahoma Prescribed Fire Council (OPFC) –**

- Work on long range planning continues.

#### **Oklahoma Invasive Species Council (OKIPC) –**

- Continued monitoring activities.

#### **Stamper Project –**

Shanon Phillips, WQP Director, has put Mr. Stamper in contact with a group that may bring private investors to the project. This is probably the only viable avenue for funding at this point

**OKLAHOMA CONSERVATION COMMISSION  
DISTRICT SERVICES DIVISION  
NOVEMBER MONTHLY SUMMARY**

**Lisa Knauf Owen, Director  
December 5, 2011 Commission Meeting**

**Provided Assistance to the Following Districts**

Adair	Craig	Kiamichi	Pittsburg
Blaine	Dewey	Kiowa	Pushmataha
Bryan	E. Canadian	LeFlore	Sequoyah
Caney Valley	E. Woods	Muskogee	Tulsa
Central North	Ellis	N. Caddo	Upper Washita
Cherokee	Greer	Okfuskee	Wagoner
Cleveland	Hughes	Okmulgee	Washita
Coal	Johnston	Osage	Woods

**Meetings & Events Attended**

- \* Conservation District Board Meetings Attended:
  - East Canadian County
  - Garfield County
- \* Attended 5 OACD Area Meetings. Prepared luncheon preside packet; organized awards; worked with host district on logistics; assisted with afternoon employee session; compiled OCC staff registrations; organized travel arrangements.
- \* Attended Open Meeting/Open Records Act workshop. Notified districts of requirements for websites.

**Division Activities**

- \* Provided training to new district manager at E. Canadian County and new secretary in Garfield County. Provided information about cost-share program; agenda development; payroll and financial management. Reviewed draft minutes for accuracy and completeness. Attended employee's second board meeting.
- \* Notified districts of deadline to file Calendar of Meeting Dates for 2012.
- \* Assisted Tulsa County with payroll issues. Assisted Ellis County – follow-up with new secretary.
- \* Assisted numerous districts with completion of US Census Government Units Survey.
- \* Assisted numerous districts with payment of state withholding taxes online.
- \* Discussed personnel vacancies with board members from Haskell County and Woods County.
- \* Assisted Pittsburg County with longevity payment.
- \* Assisted with correspondence to Kiowa and Washita County CD's regarding consolidation incentive. Reviewed board minutes to determine actions that have been taken.
- \* Provided auditors with information for Sequoyah County CD.
- \* Continued assistance to Adair County CD regarding EEOC complaint.
- \* Assisted with Okmulgee County building maintenance issue. Discussed options with district staff and reviewed correspondence.
- \* Logged in district audits/filing of audit/annual net worth statement. Notified district if information was incomplete.
- \* Reviewed statute and rule to determine if new language is needed for audit requirements for Conservation Districts.

- \* Researched status of USFWS grant funds for prescribed burn associations. Office of State Finance had received funds but failed to notify OCC.
- \* Processed extensions and renewal of agreements with districts to begin work on floodplain easement project.
- \* Followed up with NRCS regarding access to the USDA IT network for 4 OCC conservation technicians. Worked with NRCS District Conservationists and ASTC(FO) to understand process for accessing AgLearn and loading training modules.
- \* Processed conservation district minutes.
- \* Assisted districts with information regarding district employee promotions, vacancies and upcoming retirements.

**OKLAHOMA CONSERVATION COMMISSION  
WATER QUALITY DIVISION  
NOVEMBER MONTHLY SUMMARY  
Shanon Phillips, Director  
November 21, 2011**

**Conservation District Meetings**

Staff attended Adair, Blaine, Central North Canadian River, Delaware, East Canadian, Mayes, South Caddo Conservation District Board meetings.

**Honey Creek Implementation/Demonstration Projects**

**Staff conducted the following activities:**

- 105 conservation plans have been written on 21,729.6 acres in the watershed
- 42 cooperators are actively participating and 44 have completed implementation
- Conducted 4 site visits this month to inspect completed BMPs, work in progress, or install cooperator signage
- Held 13 consultations with producers or interested participants
- Funds spent since last report: \$ 7,163.10
- Total claims paid to date through 11/13: \$ 1,454,264.91
- Cooperators Share: \$ 706,193.66
- **Funds obligated to date: \$ 1,769,531.75**

**BMP information**

- This month we added 0 new feet of riparian exclusion fencing for a total of 39,676 feet of riparian exclusion fencing; 380.2 total acres of riparian exclusion.
- This month we added 1,813 new linear feet of fencing for a total of 173,523 linear feet.
- This month we added 0 acres of grass planting for a total of 117 acres.
- This month 0 new septic system was installed for a total of 12 replacement systems in the watershed.
- This month 0 new ponds were constructed for a total of 21 ponds.
- This month 1 new watering facility was installed for a total of 138 watering facilities.
- This month 262 feet of pipeline was installed for a total of 49,527 feet of pipeline.
- This month 0 new wells were drilled for a total of 50 wells.
- This month 0 new winter feeding facilities were constructed, for a total of 22 WFFs.
- This month 0 new cake out/litter storage facilities were constructed for a total of 2 cake out/litter storage facilities.
- This month 2 new heavy use areas were installed, for a total of 175 heavy use areas.

**North Canadian River Implementation Project**

**Staff conducted the following activities:**

- **118 total Performance Agreements have been approved by district boards.**
  - 6 New Performance Agreement approved in November
    - G. Moon – Riparian Exclusion, R. Payne – No Till, C. Seyler – Grass Planting, R. Brown – Solar Pump/Well, C. Driever – Solar Pump/Well, B. Koen - Solar Pump/Well

- As of November 17, 2011, landowners have installed \$1,106,663.00 in BMPs
- Of this amount, \$105,603.11 is in landowner contributions. The majority being no-till incentives and riparian area exclusion

**Funds obligated to date: \$ 1,745,565.20**

- 11.01.11 – Power-point presentation to Canadian County Master Gardeners, El Reno. Topics included:
  - North Canadian River 319 Project
  - Blue Thumb Program
  - Urban Impacts on Water Quality and the Importance of Riparian Areas
  - 4-Mile Creek, Adams Park Riparian Area Restoration and Rain Garden Project proposal made to Canadian Co. Master Gardeners. Under consideration
- 11.15.11 – NCR §319 Project Booth at OACD Area I Meeting, Woodward

**BMPs completed:**

- No-till: 19,119 implemented acres
- Grass Planting: 968 acres
- Septic Systems: 8 septic systems completed
- Waterways: 0 waterways completed
- Ponds/GSS: 0 new ponds; 0 new GSS; 1 GSS completed
- Solar Pumps/Tanks/Wells: 6 completed
- Pipelines: 2 Total
- Cross Fencing: 7,842 L.F. completed
- Riparian Area Exclusion: 409 acres implemented. 10 new acres added
- Riparian Area Fencing: 50,707 L.F. installed. 1,400 est. new L.F. pending

**Illinois River Riparian Project**

**Staff conducted the following activities:**

- Conservation planning in the Illinois River watershed
- Reviewed progress and prepared claims on Illinois River BMPs, including taking GPS readings and photos of BMPs.
- 217 Total applicants, 158 approved to date, 85 completed, 49 currently active, 24 cancelled; 78 Conservation Plans written to date

**BMP Information, added this month**

- 0 new acres enrolled in Use Exclusion for riparian areas, 1,149.8 total
- 0 new Septic system replacement this month, 72 total replaced
- 0 L ft of riparian fence added, 60,364 L ft of riparian fence total (~11.4 miles)
- 52,360 L ft of cross fence total
- 2638 cu yds of heavy use area total on 74 areas
- 10 wells total
- 1 solar pump, storage tank & well total
- 4 ponds total
- 75 DIFT of pipeline PVC added, 41157 DIFT of pipeline PVC total
- 57 off-site watering facilities total
- Funds spent during October 2011: \$0



- Total claims paid to date through 11/14/11: \$1,146,208
- Cooperators Share: \$516,881
- **Funds obligated to date: \$2,341,650**

### **Spavinaw Creek Watershed Implementation**

#### **Staff conducted the following activities:**

- 75 cooperators are actively participating
- 0 contracts were written this month
- Conducted 7 site visits this month to inspect completed BMPs
- Held 5 consultations with producers or interested participants
- Funds spent during October 13- November 17, 2011: \$42,472.18
- Total claims paid to date through November 17, 2011: \$1,302,237.53
- Cooperators Share: \$926,431.43
- Total Funds Paid: \$2,228,668.95

**Funds obligated to date: \$2,104,332.40**

#### **BMPs completed in the watershed this past month:**

- Added 1057 new linear feet of fencing for a total of 179,116
- Added 11,695 linear feet of riparian fencing this month, for a total of 31,514 linear feet
- Installed 1 new septic system this month, for a total of 25 septic systems replaced
- Constructed 5 new ponds this month, for a total of 20 ponds constructed
- Installed 3 new watering facilities this month, for a total of 84 watering facilities
- Installed 1320 feet of pipeline this month, for a total of 35,786 feet of pipeline
- Drilled 0 new water wells this month, for a total of 27 water wells completed
- Constructed 0 new winter feeding facilities this month, for a total of 21 winter feeding facilities.
- A total of 253.4 acres of grass planting have been completed in the watershed.
- Installed 6 heavy use areas using concrete, gravel and geotextile this month, for a total of 117 heavy use areas

### **Conservation Reserve Enhancement Program**

#### **Staff conducted the following activities:**

- Pre-bid meeting and tours for Streambank Stabilization project (11/3)
- Bid tour for Streambank Stabilization project (11/17)
- Cherokee County Conservation District Outreach meeting (11/3)
  - Presented program information verbally and with a display
- Attended American Water Resources Association Annual meeting in Albuquerque, New Mexico (11/5-10)
  - Gave oral presentation titled "A Tale of Cooperation, Riparian Buffers, and Affected Run-Off Acreage in the Illinois River Watershed"
- Gave presentation on riparian buffers and CREP at Indian Nations Audubon Society meeting (11/17)
- Reviewed manuscript for Wildlife Society Bulletin

## Applications and Acreage

- 127 applications have been taken for CREP
  - One hundred twenty-four site visits have occurred
  - Two landowners opted out prior to visit
  - Fifty-seven landowners opted out after initial visit
  - Nine have not qualified for various reasons
  - Nine have been GPSed and are ready for contracts
  - *Fifty-five contracts have been approved and signed*
    - Acreage on four contracts has been withdrawn from program leaving fifty viable contracts
- Total Acreage:
  - Considered = 2,410.5 acres
  - Declined or Ineligible = 1,601.5 acres
  - Contracted = 587 acres (Goal = 9,000 acres)
  - Removed from program = 32.7 acres
  - Pending = 222 acres

Entity	Contracted or Paid Out	Remaining Funds
FSA	\$ 945,970.87	\$ 19,154,029.13
State	\$ 2,183.02	
Landowner	\$ 107,910.63	
<b>Total</b>	<b>\$ 1,056,064.52</b>	

## BMP Information

- Total linear feet of riparian fencing installed is **46,646**
  - Contracted, but not yet installed = 22,025 linear feet
- Total bare-root seedlings planted to date is **65,082**
  - Contracted, but not yet installed = 49,454
- One pond has been installed
- Three water wells have been installed
- Two watering facilities have been installed. Four more are contracted for installation
- One heavy use area has been installed
- 865 feet of pipeline has been installed and an additional 1,150 feet are scheduled for installation
- **Over \$149,905.00 has been paid out in cost share on best management practices for CREP!**

## Technical Writing

### Staff conducted the following activities:

- Worked to analyze and compile OCC's contribution to the 2012 Integrated Report
- Worked on workplan revisions and budget adjustments for FY12 §319 program
- Submitted Honey Creek Watershed Final Report

## **Carbon Program**

### **Staff conducted the following activities:**

- Coordinated with Major, Woodward, Dewey, N. Caddo, S. Caddo, Deer Creek, Washita, Kiowa, and Greer county conservation districts to facilitate carbon contract verification and reporting.
- Attended Delta CIG nutrient management project launch meeting (webinar).
- Attended OACD Area IV and Area I meetings.
- Met (by phone) with the OK-SWCS planning committee to plan the 2012 Producer Communication Workshop for agencies.
- Attended Water Quality Division staff meeting
- Met with Oklahoma Forestry Services regarding forestry carbon verification protocol.
- Wrote a grant proposal for a U.S. Forest Service urban and community forests project in El Reno, OK.
- OCC signed a subcontractor agreement with Delta Institute for a three year Nutrient Management project.
- OCC signed agreement with Muskogee CCD for verification of OACD ECoPass program carbon contracts.
- Worked on selecting speakers for the OK-SWCS Producer Communication Workshop to be held March 20, 2012 @ OSU-OKC.

## **Monitoring**

### **Staff conducted the following activities:**

- Conducted routine water quality monitoring for the Rotating Basin Project - 5.2 (Lower Red River Basin)
- Conducted routine water quality monitoring for the Rotating Basin Project – 1.3 (Neosho-Grand and Upper Canadian Basins)
- In addition, water samples were collected for Honey Creek, Lake Eucha/Spavinaw, Illinois River CREP, and the North Canadian Project sites
- Completed the desktop reconnaissance for the Rotating Basin 2.3 (Upper Arkansas, Cimarron and Upper North Canadian Basins) probabilistic component sites (150) and forwarded access permission letters to all landowners

## **Wetlands Coordinator**

### **Staff conducted the following activities:**

- Conducted 30 wetland determinations
- Staff continued collecting and assimilating information for the fy '11 Development of a Wetland Plan for Oklahoma
- Met with the Oklahoma Wetland Technical Work Group and discussed the status of wetlands programs and future goals as the first step in completing a 5 year program development plan
- Completed compilation and proofing of data sheets for the National Wetland Condition Assessment (NWCA) project

## **Blue Thumb – Statewide**

### **Blue Thumb Field Work and Quality Assurance Sessions**

Work being done by Blue Thumb staff members at this time revolves around quality assurance sessions and macroinvertebrate sub-sampling.

### **Education/Events Calendar**

- 11/1 – Blue Thumb Low Impact Development Presentation to Canadian County Master Gardeners (with Debi Carnott), Cheryl
- 11/ 3 – CREP Informational Meeting, Tahlequah (Blue Thumb Presentation was part of the agenda), Cheryl
- 11/ 8 – Blue Thumb QA at Oklahoma City University featured guest speaker Al Sutherland from the State Weather Center to address drought, Kim
- 11/ 8 – Grand Lake 4-State meeting, Joplin, Kevin
- 11/ 9 – Blue Thumb QA at Ada featured guest speaker natural living specialist Stephanie Jefford, Kim
- 11/15 – Blue Thumb QA at Northeastern State University featured guest speaker Dr. Sarah Hammond to tell about the Ozark Tracking Society, Cheryl

### **Blue Thumb Training/Screening Events**

- 11/4 & 5 – Blue Thumb Training for New Volunteers, Pryor
- 11/18 – Blue Thumb PLAYHARD event for High School Teachers and Students at Oklahoma City University

### **Field Activities**

- Quality Assurance and Macroinvertebrate Sub-sampling Took place on these dates:  
November 2, 3, 4, 5, 6, 7, 9, 10, 15, 16, 21, 22

## **Caddo County Special Projects**

Executive summary: Contractor is on site and has begun construction for PW 1059. Easements have been acquired for PW 1060 and the contracting process is ready to begin. The Special Projects Coordinator is waiting for the PW 1234 Real Property Work Map to be issued by the State Conservationist so that easements can be acquired. The Special Projects Coordinator is also waiting for the PW 1280 Real Property Work Map to be issued by the State Conservationist so that easements can be acquired there.

PW 1059 progress:

- a. Contractor is making progress.
- b. Stakes have been placed to move the mis-located section of the berm.

PW 1060 progress:

1. Received Right-of-way grants from the BIA November 3 and am in the process of starting the contracting process.

PW 1234 progress:

1. Coordinator has completed the draft mailing list and have the documents for signature drafted waiting only for the State Conservation Engineer to review the contract package and issue the Real Property Work Map.

PW 1266 progress:

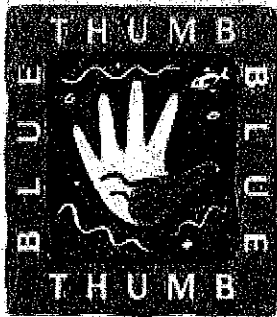
1. Coordinator has completed a table of ownership and current easements for this reach.
2. Coordinator has also completed a database of the BIA ownership lists that I can use to generate the information for the forms and letters we will need to send to the BIA Trust beneficiaries.
3. NRCS' Curtis Washburn, Project Engineer, has submitted a draft contract package to Stillwater.

PW 1280 progress:

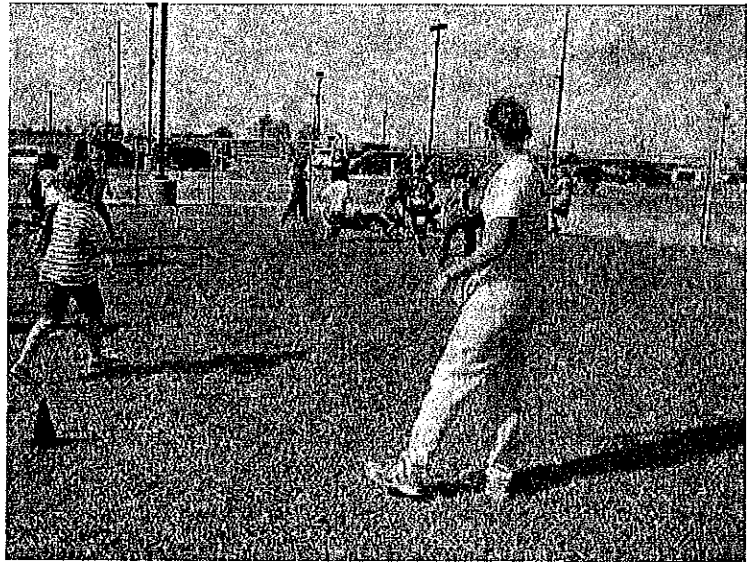
2. NRCS' Curtis Washburn, Project Engineer, has submitted the completed contract package to Stillwater.
3. In the process of determining land rights needed and land rights currently in place.
4. Waiting for the State Conservation Engineer to review the contract package and issue the Real Property Work Map.

**Other Meetings and Activities Completed by Staff:**

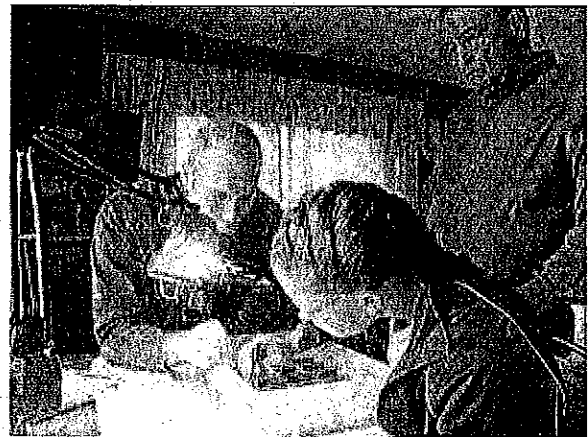
- (10/27) – Program Advisory Committee (Dela. County Ag Survey) @ OSU Extension @ Jay
- (11/3) – Cowskin Prairie Community (Honey Creek watershed) Meeting
- (11/7) - Water Quality Division Staff Meeting
- (11/8-9) – Cow Creek Streambank Restoration Workshop
- (11/9) – Delaware County Locally Led Meeting
- (11/9) - Attended the Scenic Rivers Criterion Technical Advisory Group meeting in Sallisaw
- (11/10) – Adair County Locally Led Meeting
- (11/15) – NRCS Team 6 Meeting
- (11/15) - Attended an interagency meeting on blue-green algae in OKC
- (11/16) - Attended a meeting on OU study on bacteria in the Illinois and North Canadian Rivers
- (11/17) – Honey Creek Watershed WAG
- (11/18) – Texas Watershed Planning Short Course
- (11/28) - Attended an OCLWA board meeting in OKC
- (11/29) - Participated in an EPA Region 6 NPS Managers conference call to discuss FY12 program and budget
- All five OACD meetings



**Blue Thumb  
Pictorial Report  
November  
2011**

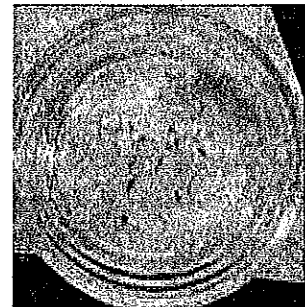


*Blue Thumb educator Kim Shaw oversees fourth graders from Grove Valley Elementary School, Oklahoma County Conservation District, as they learn some life lessons playing the part of bugs in the water. Some are predators, some prey, all trying to stay alive and capture a meal.*



*Blue Thumb staff members help volunteers understand how the life in a stream can make a powerful statement about stream health. If the stream has flow, benthic macroinvertebrates are collected in both winter and summer. Many of these creatures are larval insects that will one day leave the stream and become adults. Some macroinvertebrates are very sensitive to pollutants, habitat changes, and low levels of dissolved oxygen. Others are hardy and can even be found in sewage lagoons. The community found in a stream therefore can tell how a stream is doing, especially when this information is added to chemical data, fish data, and habitat data.*

*Above left—Kevir Gustavson oversees students at the Miami High School as they work through macroinvertebrate samples. Above right—Kim Shaw took this photograph of volunteers in Beaver County as they “picked” bugs from Sharps Creek.*



*Sometimes it is hard to tell what is a bug and what is a bit of leaf.*



*To help educate volunteers on various aspects of environmental studies, Blue Thumb has arranged a series of guest speakers in several areas of the state this year.*

*Al Sutherland, right, is a horticulturist with OSU Extension who works at the Weather Center in Norman. Al provided a very interesting presentation on the drought, and answered many questions. Blue Thumb volunteers, above, turned out in force for Al's talk.*



# OKLAHOMA CONSERVATION COMMISSION



*Blue Thumb training in Pryor on November 4 & 5 brought together people from Hugo, Oklahoma City, AND Northeast Oklahoma! There was a great turnout, and many new volunteers will begin stream monitoring before the year ends.*

**OKLAHOMA CONSERVATION COMMISSION  
ABANDONED MINE LAND DIVISION MONTHLY SUMMARY**

**Mike Kastl, AML Program Director**

December 5, 2011

**FY 2010 AML SIMPLIFIED GRANT** - The following is the status report on the submitted projects:

1. Shouse - 251 (Rogers County)  
All reclamation work has been completed and the site has been planted. The project will be monitored over the next two years per AML Program guidelines. Extreme heat in summer of 2011 and lack of rain may require the site to be re-planted.
2. Azbill - 246 (Rogers County)  
All reclamation work has been completed and the site has been planted. It will be monitored on a monthly basis or at intervals of 0.5 inches of rainfall or more until 70 percent vegetation is established.
3. Reves Phase 2 South - 101 (Sequoyah County)  
As of November 21, the contractor, Goad & Sons Construction LLC, has completed approximately 85 percent of the work in 81 percent of the contract time. The contractor's progress is being monitored closely. The contract time is 400 calendar days with the completion date of February 20, 2012.
4. Peevyhouse - 140 (Haskell County)  
As of November 21, the contractor, LLG Construction, Inc., has completed approximately 88 percent of the work in 78 percent of the contract time. The contract time is 150 days with an end date of December 20, 2011.
5. Bates/Fullerton - 259 (Rogers County)  
On October 28, the OCC accepted Ira M. Green Construction of Claremore, Oklahoma, as the low bidder for the contract at \$581,422.67. On November 14 Ira M. Green Construction signed the contract documents and returned them to DCS. DCS will process the Purchase Order and issue a Notice to Proceed. As stated in the bid documents, work can not begin until after December 15, 2011, as per arrangement with landowner.

**FY 2011 AML SIMPLIFIED GRANT** - On June 7 the Conservation Commission submitted the first reclamation project for this grant to the Office of Surface Mining. The project is the Wilson UM - 185 AML Project, located in Latimer County. On September 11 the Commission submitted three reclamation projects for this grant to OSM - McSpadden - 026 AML Project (Rogers County), Raspotnik UM - 199 AML Project (Latimer County), and Reves Phase 2 North - 102 AML Project (Sequoyah County). The Office of Surface Mining must now issue the authorizations to proceed (ATP) before work can begin on the Wilson, McSpadden, and Reves Phase 2 North. On October 26 the Office of Surface Mining issued the authorization to proceed for the Raspotnik UM project. The following is the status report on the submitted projects:

1. Wilson UM - 185 (Latimer County)  
The Office of Surface Mining must issue the authorization to proceed before the project can be submitted to DCS Construction and Properties Division to begin the bid and contracting process.



2. McSpadden - 026 (Rogers County)  
The Office of Surface Mining must issue the authorization to proceed before the project can be submitted to DCS Construction and Properties Division to begin the bid and contracting process. In phone conference call with OSM, they indicated that an ATP would be issued by November 18, 2011.
3. Raspotnik UM - 199 (Latimer County)  
On October 27 a notice announcing the prebid conference was faxed to six contractors. The prebid was held October 28 with two contractors attending. Two bids were submitted at the Latimer County Conservation District office before the deadline on October 31. The OCC accepted Jimmy Russell LLC, of Hartshorne, Oklahoma, as the low bidder at \$9,035 on November 7. DCS is in the contracting process to issue a Purchase Order and Notice to Proceed. OSM approved the Authorization To Proceed (ATP) on October 26, 2011.
4. Reves Phase 2 North - 102 (Sequoyah County)  
The Office of Surface Mining must issue the authorization to proceed before the project can be submitted to DCS Construction and Properties Division to begin the bid and contracting process. In a conference call with OSM the ATP should be issued no later than November 30 and possibly sooner.

**MONTHLY SUMMARY  
FINANCIAL MANAGEMENT & HUMAN RESOURCES  
STEVEN COFFMAN, COMPTROLLER**

**December 5, 2011**

- Processed vouchers
- Reconciled October activity to the Office of State Finance and the State Treasurer
- Reconciled October activity for the employer's share of health insurance and retirement from 87 conservation districts
- Reconciled October activity for the Bank of America purchase card program
- Prepared and submitted requests for funds from EPA 319 and 104B3 grants via Office of the Secretary of the Environment, rehabilitation funding via the U.S.D.A. Natural Resources Conservation Service, and AML funding via the Department of the Interior
- Preparation of AFLAC and OSEEGIB billings for Plan Year 2011
- Prepared monthly mileage reports for state leased motor vehicles to the Department of Central Services, Motor Pool Division
- Processed Request for Acquisitions
- Worked with the Office of State Finance to process supplemental, off-cycle, and regular payrolls via shared services agreement
- Met with the Oklahoma Capitol Improvement Authority to reconcile activity year to date against the Conservation Bond
- Prepared calendar year 2012 Employee Confirmation of Benefits for commission and conservation district employees
- Began purchase card audit being conducted by the Department of Central Services (P Card Division)
- Began process for physical inventory audit and the transfer of inventory control responsibilities to the Information Technology Division
- Worked with Department of Central Services Surplus Property Division regarding disposal of surplus items via online auction site and public auction

**OKLAHOMA CONSERVATION COMMISSION**  
**CONSERVATION PROGRAMS DIVISION**  
**Robert W. Toole, Director**  
**December 5, 2011**

Administration

- CPD administration & management.
- Government Affairs: Kingfisher Flood Project Administration; provided rehabilitation program information to Senator Brian Crain
- District Board Meetings: Hughes County
- OCC Administration: Principle Staff meeting
- Dam Safety Incident Management Team: 2 notices, 1 alert for earthquake and flood
- NRCS: Watershed O&M and Rehabilitation Coordination
- OWRB: Watershed dams & dam safety coordination
- OACD: attended area meetings

Cost-Share Program

- Water Quality: Consulted with Water Quality Division staff to process priority watershed and litter transfer claims. Provided locally led cost-share match information to Water Quality staff.
- Reviewed monthly reports received from conservation districts.
- Provided inventory assistance to FMHR.
- OACD: Attended area 2 meeting
- Claims: Processed 33 cost-share claims for a total reimbursement of \$88,371.94 including:
  - 17 locally led claim for a total of \$24,467.08
  - 16 Priority Watershed claims for a total of \$63,904.86
- Assistance: Provided Cost-Share Program assistance to 13 Conservation Districts:

LeFlore County	Ellis County	Garfield County
Pontotoc County	Kay County	Harmon County
Love County	Caney Valley	Pushmataha County
Okmulgee County	Jefferson County	Greer County
Ottawa County		

Conservation Education

- Assistance: provided Conservation Education assistance via phone or email to 4 conservation districts:

Cleveland County	Dewey County	Rogers County
Washita County		
- District Education Events:
  - ✓ Continued planning for 2012 Oklahoma Envirothon competition
  - ✓ Scheduled and began planning Con Ed workshop on mammal skins, skulls and tracks
  - ✓ Coordinated check out of Con Ed materials
  - ✓ Distributed information on OACD Outstanding Conservation Educator Awards to all districts
  - ✓ Distributed information on DEQ license tag grant to all districts
- Project WET
  - ✓ Facilitated Project WET workshop at OBU for 20 participants
  - ✓ Distributed materials for 2 Project WET workshops; database entry for 5 workshops; certificates for 3 workshops
- OKEECC
  - ✓ Continued planning for 2012 EE Expo; submitted grant application to Kirkpatrick Foundation
  - ✓ Distributed minutes from September quarterly meeting
  - ✓ Attended pre-service subcommittee meeting
- Watersheds
  - ✓ Uploaded photos from NCR Watershed workshop; began development of follow-up evaluation tool
- Meetings
  - ✓ Attended OCC meeting
  - ✓ Attended OACD Area 2 meeting

### Watershed Rehabilitation

- Administrative, technical and land rights assistance to 7 Conservation Districts:
  - Sequoyah County – Sallisaw 33
  - Pontotoc County – Upper Clear Boggy 34
  - Dewey County – Barnitz 1
  - Kingfisher County – Cottonwood 15
  - South Caddo – Fort Cobb Laterals 10
  - Logan County – Cottonwood 54
  - East Canadian County – Cottonwood 16
- Construction Contracting:
  - ✓ Washita County CD-Turkey 9, construction progressing
  - ✓ Deer Creek CD-Cobb 1, construction progressing
  - ✓ Pontotoc County CD-Upper Clear Boggy 35, construction progressing; Upper Clear Boggy 36, construction progressing; Upper Clear Boggy 33, pre-construction meeting December 1<sup>st</sup>
  - ✓ Kingfisher County CD-Cottonwood 15, construction progressing
  - ✓ South Caddo CD-Sugar L44, construction progressing
  - ✓ Coal County CD-Caney Coon 2, construction progressing
  - ✓ Sallisaw 26-Adair County, delivered to DCS CAP November 8<sup>th</sup>
- Construction Management Contracting:
  - ✓ Pontotoc County CD-Upper Clear Boggy 33, 34, and 35
  - ✓ Kingfisher County CD-Cottonwood 15
  - ✓ South Caddo CD-Sugar L44
- NRCS Rehabilitation Agreement Management: 16 agreements for a total of \$20.7 million
- Claims: Processed 12 rehabilitation claims for a total reimbursement of \$736,016.28
- Rehabilitation Assessment Project presentation at OCC meeting.
- Rehabilitation Project Status:
  - ✓ Construction Complete-23
  - ✓ Contracting/Construction Started-8
  - ✓ Construction Pending Land Rights-6
  - ✓ Planning & Design Underway-12

### Operation & Maintenance

- Technical Assistance: Provided technical assistance for watershed O&M to 16 Conservation Districts:
  - Garvin
  - Konawa
  - Custer County
  - Upper Washita
  - Okfuskee County
  - McClain County
  - Murray County
  - Hughes County
  - Washita County
  - North Caddo
  - Grady County
  - Johnston County
  - West Caddo
  - Deer Creek
  - Greer County
  - Payne County
- Conservation District O&M Plans & Priorities - \$22 million identified needs. \$16 million identified needs for FY12.
- Corrective Action Management: monitoring 14 sites.
- District Board Meetings: Garvin
- Okie One-Call System: Monitor & troubleshoot system
- Intent-to-Drill System: Monitor & troubleshoot system
- DEQ Alerts: none
- Watershed Aide Management: Konawa; Kiowa County; Murray County; Washita County; Garvin; Grady County
- Claims: Processed 24 watershed claims for a total reimbursement of \$15,852.22
- Watershed Aide Staffing Requests: Arbuckle/Love County; Pontotoc County; Lincoln County; Creek County; South Caddo/North Caddo/West Caddo; Upper Washita
- O&M Funding Requests:
  - ✓ This month: 8 requests reviewed
    - o 6 requests approved for a total amount of \$12,115; 6 Conservation District's assisted
    - o 2 requests were not approved for a total amount of \$133,115
  - ✓ To date: \$4,024,885.27 total amount allocated from bond funds; 54 Conservation District's assisted
  - ✓ To date: \$1,247,264.22 total amount unfunded O&M requests
- Contracting: Remedial Repairs
  - ✓ South Caddo, Sugar Creek Farrow Drop & Station 493- construction progressing

**OKLAHOMA CONSERVATION COMMISSION  
INFORMATION TECHNOLOGY DIVISION MONTHLY SUMMARY**

**Mike Sharp, Director**

November, 2011

**AML**

- Transport HP1055 36-inch plotter to Rogers County office. Made arrangements to repair and refurbish plotter for Tracy Reeder's use. Transported HP500 24-inch plotter to OKC office.
- Sharp attended OACD Area 5 meeting in Wilburton on November 17.
- Met with Henry Roye on November 17. Visited and gathered GPS data on sites at Gowen, Dow, Krebs and North McAlester.

**IT Activity**

- Worked on various hardware and software support issues for OCC computer systems.
- Routine server, software and anti-virus and anti-spam maintenance.
- Worked with various conservation districts on IT issues.
- Worked on various issues related to IT consolidation, budget and inventory.
- IT staff (Huber, Willoughby, Sharp) attended IT consolidation informational meeting at Metro Tech on November 1.
- Sharp attended INOTECH Conference including a CIO/IT Director meeting held in Cox Center on November 3.

**Geographic Information System (GIS) Activity**

- Provided GIS services to AML, Administration, Conservation Programs, Blue Thumb and WQ.
- Worked with the Watershed Assessment Team on various issues.
- Willoughby and Sharp met with Jim Henley on November 7 to plan approach to assessing the hazard classification of 250 watershed dams.
- Prepared map to identify high hazard watershed dams located within 50 miles of epicenter of earthquake events occurring on November 5.

**Office of Geographic Information**

- Participated in various Oklahoma Broadband Team meetings.
- Conducted meeting of State Geographic Information Council on November 4. Topic be presented was an update on the status of Oklahoma's Broadband initiatives.
- Worked with contractor MY Consulting and sub-contractor Coordinate Solutions on the OKMaps Phase 2 project.
- Worked on developing a white paper on governance of geographic information resources for the State of Oklahoma.
- Sharp and Willoughby attended GIS Day in Tulsa on November 16. Sharp gave a presentation on the activities of the GI Council and Office of Geographic Information.
- Sharp met with Oklahoma Office of Homeland Security staff on November 15 to update them on status of the OKMaps project.
- Participated in online administration training on Virtual USA application.
- Landcover data layer planning meeting with OK Wildlife staff scheduled for November 22.