

**AGENDA**  
**OKLAHOMA CONSERVATION COMMISSION**  
**Agriculture Building Board Room - 2800 N. Lincoln**  
**Oklahoma City, Oklahoma**  
**October 4, 2010 - 9:30 a.m.**

1. Call to Order.
2. Roll call.
3. Pledge of Allegiance.
4. Discussion and possible approval of the September 2, 2010 regular meeting minutes.
5. Discussion and possible approval of Recommendations for Appointment of Conservation District Director (Exhibit #1).
6. Discussion and possible approval of Claims and Financial Statement (Exhibit #2).
7. Recognition of Judith Wilkins, Environmental Coordinator, for 10 years of service.
8. Presentation of Commission Agreements (Exhibit #3):  
Discussion and possible ratification of the following amended agreements:
  - a. Natural Resources Conservation Service (NRCS) No. 68-7335-10-16, Amendment 1, to assist with delivery of Farm Bill; amended to add \$95,000 to Part A.
  - b. NRCS No. 68-7335-0-14, Amendment 1, to obtain technical assistance that will assist NRCS with the construction inspection of Sallisaw Creek Site 18M funded through ARRA. The project is currently under construction; amended to increase agreement by \$72,300.
  - c. NRCS No. 68-7335-0-17, Amendment 1, inspection services for Cottonwood 15 Watershed rehabilitation project; amended to increase agreement by \$18,800.
  - d. NRCS No. 68-7335-0-19, Amendment 1, inspection services for Upper Clear Boggy 34 Watershed rehabilitation project; amended to increase agreement by \$17,000.
  - e. NRCS No. 68-7335-0-21, inspection services for Sugar Creek L-44 Watershed rehabilitation project:
    1. Amendment 1 to increase agreement by \$19,900.
    2. Amendment 2 to increase agreement by \$70,000.  
Discussion and possible approval of the following amended agreements:
  - f. Oklahoma State University #08-146, Amendment 1, for maximizing nitrogen use efficiency; amended to extend agreement with minor work-plan revision.
  - g. NRCS No. 69-7335-9-28, Amendment 2, for remedial repairs to Keechi in Sugar Creek; amended to extend time to September 30, 2011.
  - h. NRCS No. 69-7335-9-29, Amendment 2, for remedial repairs to Uncle John 5 and Bear Fall Coon 6; amended to extend time to September 30, 2011.

Discussion and possible approval of the following new agreements:

- i. Oklahoma State University to collect and analyze soil samples from the NRCS Conservation Innovation Grant/Western Farmers Electric Cooperative (CIG/WFEC) project areas and to develop a hand soil sampling protocol for use by carbon offset verifiers.
- j. Conservation Districts in the CIG/WFEC Project Area to provide carbon offset verification and be compensated at an hourly rate and for mileage.
- k. Oklahoma Association of Conservation Districts to provide outreach to producers in CIG/WFEC project areas about environmental and economic advantages of conservation management practices and the benefits of participating in the project.
- l. Bryan Conservation District to implement conservation practices to restore vegetation on flood plain easements.
- m. Cotton County Conservation District to implement conservation practices to restore vegetation on flood plain easements.
- n. Jefferson County Conservation District to implement conservation practices to restore vegetation on flood plain easements.

9. Out of State Travel Requests (Exhibit #4):

Discussion and possible ratification of the following requests:

- a. Agricultural GHG Mitigation Initiatives Joint C-AGG Meeting, October 4-5 2010, Chicago, Illinois.
- b. Climate Action Reserve Ag Protocols Scoping Meeting, October 6, 2010, Chicago, Illinois.

Discussion and possible approval of the following request:

- c. A Community on Ecosystem Services Meeting, December 6-9, 2010, Chandler, Arizona.

10. Discussion and possible approval of the following recommendation of the Budget and Allocations Advisory Committee: The Conservation Commission will offer an incentive grant not to exceed \$100,000.00 based on the first of three years' general revenue savings to those districts willing to consolidate to county boundaries. The grant dollars may be used for expenses as defined by the Conservation District Act.
11. Discussion and possible approval of the Commission's FY2012 budget request.
12. Discussion and possible approval of the Commission's Strategic Plan for Fiscal Years 2011 - 2016 (Exhibit #5).
13. Discussion and possible approval of the Oklahoma Abandoned Mine Land Emergency Program Policy.
14. Bob Priess, Payne County Conservation District Board Chair, to address the Commission regarding the district's allocation and budget reduction.
15. Public Comments.

16. New Business.
17. Break (at option of the Chair)
18. Status Reports:
  - a. Oklahoma Conservation Commission Members
  - b. Oklahoma Conservation Commission Staff
    1. Mike Thralls, Executive Director
    2. Lisa Knauf, District Services Director
    3. Shanon Phillips, Water Quality Director
    4. Ron Cardwell, Abandoned Mine Land Program Engineer
    5. Steve Coffman, Financial Management and Human Resources Director
    6. Shellie Willoughby, Information Technology Division GIS Specialist
    7. Robert Toole, Conservation Programs Director
    8. Ben Pollard, Assistant Director
  - c. Oklahoma Association of Conservation Districts
  - d. USDA-Natural Resources Conservation Service
  - e. Oklahoma Department of Agriculture, Food and Forestry
19. Next Meeting: November 1, 2010, Agriculture Building Board Room, 2800 N. Lincoln Boulevard, Oklahoma City, Oklahoma at 9:30 a.m.
20. Adjournment.

**RECOMMENDATIONS FOR APPOINTMENT OF CONSERVATION DISTRICT DIRECTORS**

<u>DISTRICT</u>	<u>NAME</u>	<u>SUCCEEDS</u>	<u>TERM EXPIRES</u>	<u>POS#</u>
Caney Valley	*Larry Jellison	Delisa Swanson	June 30, 2011	A
Pushmataha	James Bryant	Paul Wade (res)	June 30, 2013	E3
Haskell County	Bill Wilson	Self	June 30, 2012	A

\* added after meeting packets were mailed.

**OKLAHOMA CONSERVATION COMMISSION  
CLAIMS REGISTER BY PROGRAM  
FOR THE PERIOD OF AUGUST 25, 2010 THRU SEPTEMBER 20, 2010**

Voucher	Fund Class	Department	Date	Amount	Account	Payee
<b>Employee Withholdings / Retirement / Insurance</b>						
30929	19101	3000002	8/31/2010	\$145,557.71	512110	STATE & EDUC EMPL GRP INS BD
30930	19101	3000002	8/31/2010	\$1,076.78	512110	AFLAC
30930	70000	3000002	8/31/2010	\$5,429.04	512110	AFLAC
30930	19101	3000002	8/31/2010	\$51.00	512120	AFLAC
31091	19101	3000002	9/15/2010	\$25,030.14	513250	OKLAHOMA PUBLIC EMPLOYEES RETIREMENT SYS
31091	19101	3000002	9/15/2010	\$48,039.08	513250	OKLAHOMA PUBLIC EMPLOYEES RETIREMENT SYS
H0174763	99400		9/16/2010	\$26.00	633110	AMERICAN GENERAL LIFE INS CO
H0174764	99400		9/16/2010	\$413.83	633110	CONSECO HEALTH INSURANCE
H0174765	99400		9/16/2010	\$329.66	633190	UNITED WAY OF CENTRAL OKLAHOMA INC
H0174766	99400		9/16/2010	\$13.00	633110	LEADERS LIFE INSURANCE CO.
H0174767	99400		9/16/2010	\$300.00	633190	OKLAHOMA COLLEGE 529 SAVINGS PLAN
H0174768	99400		9/16/2010	\$786.03	633110	AMERICAN FAMILY LIFE ASSURANCE CO
H0174769	99400		9/16/2010	\$400.00	633130	CREDIT UNION ONE OF OKLAHOMA
H0174770	99400		9/16/2010	\$75.00	633190	OKLA PUBLIC EMPLOYEES ASSOC
H0174771	99400		9/16/2010	\$14.95	633110	PRE PAID LEGAL CASUALTY INC
H0174772	99400		9/16/2010	<u>\$7,419.00</u>	633130	OKLA EMPLOYEES CREDIT UNION

**\$234,961.22 Employee Withholdings / Retirement / Insurance**

**Administration**

30937	19101	1000001	9/1/2010	\$12.90	534110	EUREKA WATER COMPANY
30939	19101	1000001	9/1/2010	\$97.00	533120	FUZZELLS BUSINESS EQUIPMENT
30941	19101	1000001	9/1/2010	\$289.20	532140	SHARP ELECTRONICS CORPORATION
30968	19101	1000001	9/3/2010	\$198.26	536130	AUTHORITY ORDER-PCARD
30968	19001	1000001	9/3/2010	\$296.00	536140	AUTHORITY ORDER-PCARD
30968	19101	1000001	9/3/2010	\$449.38	536140	AUTHORITY ORDER-PCARD
30968	20500	1000004	9/3/2010	\$89.30	531170	AUTHORITY ORDER-PCARD
30968	20500	1000004	9/3/2010	\$250.00	531260	AUTHORITY ORDER-PCARD
30968	19101	1000005	9/3/2010	\$92.11	541120	AUTHORITY ORDER-PCARD
30970	19101	1000001	9/3/2010	\$89.00	521310	DAN LOWRANCE
30971	19101	1000001	9/3/2010	\$37.00	521310	MIKE ROOKER
30972	19101	1000001	9/3/2010	\$115.00	521310	GEORGE STUNKARD
30973	19101	1000001	9/3/2010	\$153.00	521310	JAMES GERARD GREGO
30974	19101	1000001	9/3/2010	\$181.50	521310	MATT GARD
30975	19101	1000001	9/3/2010	\$563.22	512120	DEPARTMENT OF CENTRAL SERVICES
31012	19101	1000001	9/8/2010	\$59.00	521110	THRALLS MICHAEL L
31012	19101	1000001	9/8/2010	\$42.00	521210	THRALLS MICHAEL L
31012	19101	1000001	9/8/2010	\$152.50	521230	THRALLS MICHAEL L
31012	19101	1000001	9/8/2010	\$25.00	521240	THRALLS MICHAEL L
31012	19101	1000001	9/8/2010	\$51.00	521250	THRALLS MICHAEL L
31012	19101	1000001	9/8/2010	\$438.51	521260	THRALLS MICHAEL L
31036	19101	1000001	9/13/2010	\$506.28	515610	DEPARTMENT OF CENTRAL SERVICES
31037	19101	1000001	9/13/2010	\$19.35	534110	EUREKA WATER COMPANY
31038	19101	1000001	9/13/2010	\$864.19	531230	OFFICE OF STATE FINANCE
31039	19101	1000002	9/13/2010	\$784.00	531130	OFFICE OF STATE FINANCE
31040	19101	1000001	9/13/2010	\$706.22	533110	OFFICE OF STATE FINANCE
31041	40000	1000001	9/13/2010	\$284.93	531130	AT & T MOBILITY NATIONAL ACCOUNT LLC
31041	40000	1000002	9/13/2010	\$150.85	531130	AT & T MOBILITY NATIONAL ACCOUNT LLC
31083	40000	1000002	9/14/2010	\$11,300.00	541120	DELL MARKETING LP
31092	19101	1000001	9/15/2010	\$185,289.39	548110	CAPITOL IMPROVEMENT AUTHORITY

**OKLAHOMA CONSERVATION COMMISSION  
CLAIMS REGISTER BY PROGRAM  
FOR THE PERIOD OF AUGUST 25, 2010 THRU SEPTEMBER 20, 2010**

Voucher	Fund Class	Department	Date	Amount	Account	Payee
31112	19101	1000001	9/16/2010	\$29.52	531110	FEDEX FREIGHT EAST INC
31121	19101	1000001	9/16/2010	\$24.85	534260	FIRST AID EXPRESS
31155	40000	1000001	9/17/2010	\$360.00	522110	DEPARTMENT OF CENTRAL SERVICES
31155	19101	1000001	9/17/2010	\$607.00	522110	DEPARTMENT OF CENTRAL SERVICES
31156	19101	1000001	9/17/2010	\$0.74	531130	AT&T CORPORATION
31157	40000	1000001	9/17/2010	\$29.80	532140	SHARP ELECTRONICS CORPORATION
31157	40000	1000001	9/17/2010	\$110.36	532140	SHARP ELECTRONICS CORPORATION
31157	40000	1000001	9/17/2010	\$212.50	532140	SHARP ELECTRONICS CORPORATION
31158	40000	1000001	9/17/2010	\$446.50	532140	SHARP ELECTRONICS CORPORATION
31158	40000	1000001	9/17/2010	\$160.48	541110	SHARP ELECTRONICS CORPORATION
31158	40000	1000001	9/17/2010	\$466.49	541110	SHARP ELECTRONICS CORPORATION
31159	40000	1000001	9/17/2010	\$360.00	522110	DEPARTMENT OF CENTRAL SERVICES
31159	19101	1000001	9/17/2010	<u>\$607.00</u>	522110	DEPARTMENT OF CENTRAL SERVICES

**\$207,001.33 Administration**

**Watershed Operation & Maintenance**

30879	19101	2000001	8/26/2010	\$89.04	555170 96	GARVIN CONSERVATION DISTRICT
30934	19101	2000001	9/1/2010	\$133.90	531130	AT&T CORPORATION
30935	19101	2000001	9/1/2010	\$70.10	531130	AT&T CORPORATION
30936	19101	2000001	9/1/2010	\$266.36	522130	DAYS INN
30938	19101	2000001	9/1/2010	\$91.30	537150	FASTENAL COMPANY INC
30940	19101	2000001	9/1/2010	\$481.32	537310	K & S TIRE INC
30948	40000	2000001	9/1/2010	\$394.21	515010	WEST GROUP
30954	40000	2000001	9/1/2010	\$18,703.00	555170 96	GARFIELD CO CONSERVATION DISTRICT
30955	40000	2000001	9/1/2010	\$6,730.03	555170 11	ADAIR COUNTY CONSERVATION DISTRICT #67
30968	19101	2000001	9/3/2010	\$120.00	536140	AUTHORITY ORDER-PCARD
30968	19101	2000001	9/3/2010	\$15.95	536150	AUTHORITY ORDER-PCARD
30968	19101	2000001	9/3/2010	\$129.95	541130	AUTHORITY ORDER-PCARD
30968	19101	2000001	9/3/2010	\$44.33	541230	AUTHORITY ORDER-PCARD
30978	19101	2000001	9/3/2010	\$73.12	531130	AT&T CORPORATION
31026	19101	2000001	9/9/2010	\$242.69	533120	COMDATA NETWORK INC
31026	19101	2000001	9/9/2010	\$1,187.64	534290	COMDATA NETWORK INC
31026	19101	2000001	9/9/2010	\$1,907.52	534290	COMDATA NETWORK INC
31035	40000	2000001	9/10/2010	\$26,898.00	555170 96	KAY COUNTY CONSERVATION DISTRICT
31041	40000	2000001	9/13/2010	\$538.46	531130	AT & T MOBILITY NATIONAL ACCOUNT LLC
31048	19101	2000001	9/13/2010	\$89.53	531370	AMERICAN ELECTRIC POWER
31049	19101	2000001	9/13/2010	\$41.52	531370	AMERICAN ELECTRIC POWER
31054	19101	2000001	9/13/2010	\$1.57	531130	AT&T CORPORATION
31055	19101	2000001	9/13/2010	\$140.88	537150	FASTENAL COMPANY INC
31058	40000	2000001	9/13/2010	\$10,503.00	531380	USDA APHIS
31149	40000	2000001	9/17/2010	\$394.21	515010	WEST GROUP
31160	19101	2000001	9/17/2010	\$0.33	531130	AT&T CORPORATION
31161	19101	2000001	9/17/2010	\$38.10	537150	FASTENAL COMPANY INC
31166	19101	2000001	9/17/2010	\$23.75	531360	CENTERPOINT ENERGY
31167	19101	2000001	9/17/2010	<u>\$46.60</u>	531360	OKLA NATURAL GAS

**\$69,396.41 Watershed Operation & Maintenance**

**Watershed Rehabilitation**

30907	21500	2000003	8/30/2010	\$1,925.00	555170 96	PONTOTOC COUNTY C D
-------	-------	---------	-----------	------------	-----------	---------------------

**OKLAHOMA CONSERVATION COMMISSION  
CLAIMS REGISTER BY PROGRAM  
FOR THE PERIOD OF AUGUST 25, 2010 THRU SEPTEMBER 20, 2010**

Voucher	Fund Class	Department	Date	Amount	Account	Payee
30907	40000	2000003	8/30/2010	\$3,575.00	555170 96	PONTOTOC COUNTY C D
30977	40000	2000003	9/3/2010	\$248.00	522130	AMERICINN OF STILWELL
31050	40000	2000003	9/13/2010	\$248.00	522130	AMERICINN OF STILWELL
31051	40000	2000003	9/13/2010	\$248.00	522130	AMERICINN OF STILWELL
31052	40000	2000003	9/13/2010	\$248.00	522130	AMERICINN OF STILWELL
31053	40000	2000003	9/13/2010	\$248.00	522130	AMERICINN OF STILWELL
31085	21500	2000003	9/14/2010	\$42,974.40	555170 96	PONTOTOC COUNTY C D
31085	40000	2000003	9/14/2010	\$79,809.60	555170 96	PONTOTOC COUNTY C D
31086	21500	2000003	9/14/2010	\$3,449.25	555170 96	PONTOTOC COUNTY C D
31086	40000	2000003	9/14/2010	\$6,405.75	555170 96	PONTOTOC COUNTY C D
31089	21500	2000003	9/14/2010	\$25,063.50	555170 96	KINGFISHER COUNTY CONSERVATION DISTRICT
31089	40000	2000003	9/14/2010	\$46,546.50	555170 96	KINGFISHER COUNTY CONSERVATION DISTRICT
31142	21500	2000003	9/17/2010	\$1,545.11	555170 96	DEER CREEK CONSERVATION DISTRICT
31142	40000	2000003	9/17/2010	\$2,869.49	555170 96	DEER CREEK CONSERVATION DISTRICT

**\$215,403.60**

**FEMA - Sugar Creek**

31041	41500	2000008	9/13/2010	\$35.22	531130	AT & T MOBILITY NATIONAL ACCOUNT LLC
31143	41500	2000008	9/17/2010	\$100.00	555170 88	DEER CREEK CONSERVATION DISTRICT
31155	41500	2000004	9/17/2010	\$346.79	522110	DEPARTMENT OF CENTRAL SERVICES
31155	41500	2000005	9/17/2010	\$10.87	522110	DEPARTMENT OF CENTRAL SERVICES
31155	41500	2000006	9/17/2010	\$28.16	522110	DEPARTMENT OF CENTRAL SERVICES
31155	41500	2000007	9/17/2010	\$42.48	522110	DEPARTMENT OF CENTRAL SERVICES
31155	41500	2000008	9/17/2010	\$337.00	522110	DEPARTMENT OF CENTRAL SERVICES
31155	41500	2000010	9/17/2010	\$7.90	522110	DEPARTMENT OF CENTRAL SERVICES
31155	41500	2000011	9/17/2010	\$29.64	522110	DEPARTMENT OF CENTRAL SERVICES
31155	41500	2000012	9/17/2010	\$28.16	522110	DEPARTMENT OF CENTRAL SERVICES
31159	41500	2000004	9/17/2010	\$469.30	522110	DEPARTMENT OF CENTRAL SERVICES
31159	41500	2000008	9/17/2010	\$337.00	522110	DEPARTMENT OF CENTRAL SERVICES

**\$1,772.52 FEMA - Sugar Creek**

**Field Services**

30875	19101	3000001	8/26/2010	\$2,864.70	555170 2	COTTON COUNTY CONSERVATION DISTRICT
30875	19101	3000001	8/26/2010	\$3,013.52	555170 5	COTTON COUNTY CONSERVATION DISTRICT
30876	19101	3000001	8/26/2010	\$44.00	555170 72	LITTLE RIVER CONSERVATION DISTRICT
30876	19101	3000001	8/26/2010	\$48.01	555170 71	LITTLE RIVER CONSERVATION DISTRICT
30876	19101	3000001	8/26/2010	\$116.38	555170 11	LITTLE RIVER CONSERVATION DISTRICT
30876	19101	3000001	8/26/2010	\$2,329.69	555170 2	LITTLE RIVER CONSERVATION DISTRICT
30876	19101	3000001	8/26/2010	\$3,170.11	555170 5	LITTLE RIVER CONSERVATION DISTRICT
30877	19101	3000001	8/26/2010	\$17.00	555170 72	MCINTOSH COUNTY CONSERVATION DISTRICT
30877	19101	3000001	8/26/2010	\$24.83	555170 20	MCINTOSH COUNTY CONSERVATION DISTRICT
30877	19101	3000001	8/26/2010	\$56.27	555170 71	MCINTOSH COUNTY CONSERVATION DISTRICT
30877	19101	3000001	8/26/2010	\$110.00	555170 77	MCINTOSH COUNTY CONSERVATION DISTRICT
30877	19101	3000001	8/26/2010	\$1,402.11	555170 2	MCINTOSH COUNTY CONSERVATION DISTRICT
30878	19101	3000001	8/26/2010	\$41.30	555170 71	KIAMICHI CONSERVATION DISTRICT
30878	19101	3000001	8/26/2010	\$2,050.54	555170 1	KIAMICHI CONSERVATION DISTRICT
30878	19101	3000001	8/26/2010	\$2,809.13	555170 5	KIAMICHI CONSERVATION DISTRICT
30879	19101	3000001	8/26/2010	\$15.95	555170 72	GARVIN CONSERVATION DISTRICT
30879	19101	3000001	8/26/2010	\$39.07	555170 71	GARVIN CONSERVATION DISTRICT
30879	19101	3000001	8/26/2010	\$135.00	555170 26	GARVIN CONSERVATION DISTRICT

**OKLAHOMA CONSERVATION COMMISSION  
CLAIMS REGISTER BY PROGRAM  
FOR THE PERIOD OF AUGUST 25, 2010 THRU SEPTEMBER 20, 2010**

Voucher	Fund Class	Department	Date	Amount	Account	Payee
30879	19101	3000001	8/26/2010	\$200.00	555170 62	GARVIN CONSERVATION DISTRICT
30879	19101	3000001	8/26/2010	\$2,290.20	555170 11	GARVIN CONSERVATION DISTRICT
30879	19101	3000001	8/26/2010	\$2,342.90	555170 2	GARVIN CONSERVATION DISTRICT
30880	19101	3000001	8/26/2010	\$44.00	555170 72	VALLIANT CONSERVATION DISTRICT
30880	19101	3000001	8/26/2010	\$85.99	555170 71	VALLIANT CONSERVATION DISTRICT
30880	19101	3000001	8/26/2010	\$2,383.65	555170 7	VALLIANT CONSERVATION DISTRICT
30880	19101	3000001	8/26/2010	\$2,756.49	555170 2	VALLIANT CONSERVATION DISTRICT
30881	19101	3000001	8/26/2010	\$11.83	555170 71	LOGAN COUNTY CONSERVATION DISTRICT
30881	19101	3000001	8/26/2010	\$1,997.96	555170 9	LOGAN COUNTY CONSERVATION DISTRICT
30881	19101	3000001	8/26/2010	\$2,714.22	555170 5	LOGAN COUNTY CONSERVATION DISTRICT
30882	19101	3000001	8/26/2010	\$105.92	555170 71	ADAIR COUNTY CONSERVATION DISTRICT #67
30882	19101	3000001	8/26/2010	\$2,971.65	555170 9	ADAIR COUNTY CONSERVATION DISTRICT #67
30882	19101	3000001	8/26/2010	\$3,085.65	555170 3	ADAIR COUNTY CONSERVATION DISTRICT #67
30883	19101	3000001	8/26/2010	\$8.80	555170 72	EAST WOODS COUNTY CONSERVATION DIST
30883	19101	3000001	8/26/2010	\$24.17	555170 80	EAST WOODS COUNTY CONSERVATION DIST
30883	19101	3000001	8/26/2010	\$57.00	555170 77	EAST WOODS COUNTY CONSERVATION DIST
30883	19101	3000001	8/26/2010	\$58.64	555170 71	EAST WOODS COUNTY CONSERVATION DIST
30883	19101	3000001	8/26/2010	\$179.00	555170 60	EAST WOODS COUNTY CONSERVATION DIST
30883	19101	3000001	8/26/2010	\$432.90	555170 64	EAST WOODS COUNTY CONSERVATION DIST
30884	19101	3000001	8/26/2010	\$36.00	555170 71	PAWNEE COUNTY CONSERVATION DISTRICT
30884	19101	3000001	8/26/2010	\$1,614.75	555170 94	PAWNEE COUNTY CONSERVATION DISTRICT
30884	19101	3000001	8/26/2010	\$2,334.27	555170 1	PAWNEE COUNTY CONSERVATION DISTRICT
30885	19101	3000001	8/26/2010	\$95.00	555170 70	PAYNE COUNTY CONSERVATION DISTRICT
30885	19101	3000001	8/26/2010	\$108.00	555170 72	PAYNE COUNTY CONSERVATION DISTRICT
30885	19101	3000001	8/26/2010	\$111.65	555170 71	PAYNE COUNTY CONSERVATION DISTRICT
30885	19101	3000001	8/26/2010	\$173.70	555170 60	PAYNE COUNTY CONSERVATION DISTRICT
30885	19101	3000001	8/26/2010	\$2,159.58	555170 1	PAYNE COUNTY CONSERVATION DISTRICT
30888	19101	3000001	8/28/2010	\$17.91	555170 72	PONTOTOC COUNTY C D
30888	19101	3000001	8/28/2010	\$84.38	555170 71	PONTOTOC COUNTY C D
30888	19101	3000001	8/28/2010	\$114.19	555170 79	PONTOTOC COUNTY C D
30888	19101	3000001	8/28/2010	\$2,076.97	555170 1	PONTOTOC COUNTY C D
30888	19101	3000001	8/28/2010	\$2,175.31	555170 5	PONTOTOC COUNTY C D
30889	19101	3000001	8/28/2010	\$200.86	555170 26	LINCOLN COUNTY CONSERVATION DISTRICT
30889	19101	3000001	8/28/2010	\$2,053.51	555170 1	LINCOLN COUNTY CONSERVATION DISTRICT
30889	19101	3000001	8/28/2010	\$2,354.21	555170 5	LINCOLN COUNTY CONSERVATION DISTRICT
30890	19101	3000001	8/28/2010	\$2,353.13	555170 2	ALFALFA COUNTY CONSERVATION DISTRICT
30906	19101	3000001	8/30/2010	\$45.18	555170 20	TULSA COUNTY CONSERVATION DISTRICT
30906	19101	3000001	8/30/2010	\$67.50	555170 69	TULSA COUNTY CONSERVATION DISTRICT
30906	19101	3000001	8/30/2010	\$76.22	555170 71	TULSA COUNTY CONSERVATION DISTRICT
30906	19101	3000001	8/30/2010	\$93.10	555170 72	TULSA COUNTY CONSERVATION DISTRICT
30906	19101	3000001	8/30/2010	\$159.96	555170 21	TULSA COUNTY CONSERVATION DISTRICT
30906	19101	3000001	8/30/2010	\$2,124.56	555170 11	TULSA COUNTY CONSERVATION DISTRICT
30906	19101	3000001	8/30/2010	\$2,246.39	555170 1	TULSA COUNTY CONSERVATION DISTRICT
30908	19101	3000001	8/30/2010	\$1,412.80	555170 5	GARFIELD CO CONSERVATION DISTRICT
30908	19101	3000001	8/30/2010	\$2,330.86	555170 2	GARFIELD CO CONSERVATION DISTRICT
30931	19101	3000001	8/31/2010	\$40.00	555170 65	SEMINOLE COUNTY CONSERVATION DISTRICT
30931	19101	3000001	8/31/2010	\$67.54	555170 71	SEMINOLE COUNTY CONSERVATION DISTRICT
30931	19101	3000001	8/31/2010	\$135.00	555170 62	SEMINOLE COUNTY CONSERVATION DISTRICT
30931	19101	3000001	8/31/2010	\$2,755.83	555170 3	SEMINOLE COUNTY CONSERVATION DISTRICT
30942	19101	3000003	9/1/2010	\$53.80	532140	SHARP ELECTRONICS CORPORATION
30963	19101	3000001	9/1/2010	\$77.07	555170 71	KINGFISHER COUNTY CONSERVATION DISTRICT
30963	19101	3000001	9/1/2010	\$173.96	555170 30	KINGFISHER COUNTY CONSERVATION DISTRICT
30963	19101	3000001	9/1/2010	\$2,576.59	555170 5	KINGFISHER COUNTY CONSERVATION DISTRICT
30963	19101	3000001	9/1/2010	\$2,877.29	555170 2	KINGFISHER COUNTY CONSERVATION DISTRICT



**OKLAHOMA CONSERVATION COMMISSION  
CLAIMS REGISTER BY PROGRAM  
FOR THE PERIOD OF AUGUST 25, 2010 THRU SEPTEMBER 20, 2010**

Voucher	Fund Class	Department	Date	Amount	Account	Payee
30964	19101	3000001	9/1/2010	\$2,171.80	555170	1 CIMARRON VALLEY CONSERVATION DISTRICT
30964	19101	3000001	9/1/2010	\$2,983.93	555170	5 CIMARRON VALLEY CONSERVATION DISTRICT
30965	19101	3000001	9/1/2010	\$61.15	555170	71 WAGONER COUNTY CONSERVATION DIST NO 22
30965	19101	3000001	9/1/2010	\$3,271.40	555170	3 WAGONER COUNTY CONSERVATION DIST NO 22
30966	19101	3000001	9/1/2010	\$34.08	555170	81 NORTH CADDO CONSERVATION DISTRICT
30966	19101	3000001	9/1/2010	\$146.27	555170	80 NORTH CADDO CONSERVATION DISTRICT
30966	19101	3000001	9/1/2010	\$159.52	555170	71 NORTH CADDO CONSERVATION DISTRICT
30966	19101	3000001	9/1/2010	\$1,225.60	555170	12 NORTH CADDO CONSERVATION DISTRICT
30966	19101	3000001	9/1/2010	\$1,948.82	555170	1 NORTH CADDO CONSERVATION DISTRICT
30967	19101	3000001	9/1/2010	\$45.00	555170	71 SEQUOYAH COUNTY CONSERVATION DISTRICT
30967	19101	3000001	9/1/2010	\$368.07	555170	84 SEQUOYAH COUNTY CONSERVATION DISTRICT
30967	19101	3000001	9/1/2010	\$2,676.18	555170	2 SEQUOYAH COUNTY CONSERVATION DISTRICT
30967	19101	3000001	9/1/2010	\$2,955.70	555170	9 SEQUOYAH COUNTY CONSERVATION DISTRICT
30976	19101	3000003	9/3/2010	\$435.48	522110	OKLAHOMA TURNPIKE AUTHORITY
30979	19101	3000001	9/8/2010	\$2,277.62	555170	7 GRADY COUNTY CONSERVATION DIST
30979	19101	3000001	9/8/2010	\$2,384.26	555170	6 GRADY COUNTY CONSERVATION DIST
30979	19101	3000001	9/8/2010	\$3,097.90	555170	3 GRADY COUNTY CONSERVATION DIST
30980	19101	3000001	9/8/2010	\$2,798.90	555170	94 VALLIANT CONSERVATION DISTRICT
30981	19101	3000001	9/8/2010	\$2,093.42	555170	9 BRYAN CONSERVATION DISTRICT
30982	19101	3000001	9/8/2010	\$55.31	555170	71 CREEK COUNTY CONSERVATION DISTRICT
30982	19101	3000001	9/8/2010	\$1,817.13	555170	94 CREEK COUNTY CONSERVATION DISTRICT
30982	19101	3000001	9/8/2010	\$1,907.07	555170	9 CREEK COUNTY CONSERVATION DISTRICT
30982	19101	3000001	9/8/2010	\$2,643.43	555170	2 CREEK COUNTY CONSERVATION DISTRICT
31009	19101	3000001	9/8/2010	\$2,181.14	555170	7 JEFFERSON COUNTY CONSERVATION DIST
31009	19101	3000001	9/8/2010	\$2,380.21	555170	2 JEFFERSON COUNTY CONSERVATION DIST
31010	19101	3000001	9/8/2010	\$2,184.84	555170	5 DEWEY COUNTY CONSERVATION DISTRICT
31010	19101	3000001	9/8/2010	\$2,341.05	555170	2 DEWEY COUNTY CONSERVATION DISTRICT
31011	19001	3000001	9/8/2010	\$325.00	555170	92 GREER COUNTY CONSERVATION DIST
31013	19101	3000001	9/8/2010	\$63.24	555170	71 OKLAHOMA COUNTY CONSERVATION DISTRICT
31013	19101	3000001	9/8/2010	\$1,191.34	555170	12 OKLAHOMA COUNTY CONSERVATION DISTRICT
31013	19101	3000001	9/8/2010	\$2,181.55	555170	2 OKLAHOMA COUNTY CONSERVATION DISTRICT
31014	19101	3000001	9/8/2010	\$2,275.89	555170	3 MAYES COUNTY CONSERVATION DISTRICT
31015	19101	3000001	9/8/2010	\$14.00	555170	82 MCCLAIN COUNTY CONSERVATION DISTRICT
31015	19101	3000001	9/8/2010	\$108.69	555170	72 MCCLAIN COUNTY CONSERVATION DISTRICT
31015	19101	3000001	9/8/2010	\$111.30	555170	71 MCCLAIN COUNTY CONSERVATION DISTRICT
31015	19101	3000001	9/8/2010	\$1,834.37	555170	7 MCCLAIN COUNTY CONSERVATION DISTRICT
31015	19101	3000001	9/8/2010	\$2,717.95	555170	2 MCCLAIN COUNTY CONSERVATION DISTRICT
31016	19101	3000001	9/8/2010	\$87.73	555170	71 OKMULGEE COUNTY CONSERVATION DISTRICT
31016	19101	3000001	9/8/2010	\$1,205.68	555170	12 OKMULGEE COUNTY CONSERVATION DISTRICT
31016	19101	3000001	9/8/2010	\$2,280.12	555170	11 OKMULGEE COUNTY CONSERVATION DISTRICT
31016	19101	3000001	9/8/2010	\$2,369.37	555170	1 OKMULGEE COUNTY CONSERVATION DISTRICT
31017	19101	3000001	9/8/2010	\$2,417.99	555170	2 TILLMAN COUNTY CONSERVATION DISTRICT
31018	19101	3000001	9/8/2010	\$111.72	555170	71 PAYNE COUNTY CONSERVATION DISTRICT
31018	40000	3000001	9/8/2010	\$580.56	555170	88 PAYNE COUNTY CONSERVATION DISTRICT
31018	19101	3000001	9/8/2010	\$2,159.58	555170	5 PAYNE COUNTY CONSERVATION DISTRICT
31019	19101	3000001	9/8/2010	\$43.50	555170	83 ROGERS COUNTY CONSERVATION DISTRICT
31019	19101	3000001	9/8/2010	\$55.83	555170	71 ROGERS COUNTY CONSERVATION DISTRICT
31019	19101	3000001	9/8/2010	\$200.00	555170	92 ROGERS COUNTY CONSERVATION DISTRICT
31019	19101	3000001	9/8/2010	\$915.03	555170	94 ROGERS COUNTY CONSERVATION DISTRICT
31019	19101	3000001	9/8/2010	\$1,350.83	555170	24 ROGERS COUNTY CONSERVATION DISTRICT
31019	19101	3000001	9/8/2010	\$2,822.84	555170	1 ROGERS COUNTY CONSERVATION DISTRICT
31019	19101	3000001	9/8/2010	\$3,784.23	555170	11 ROGERS COUNTY CONSERVATION DISTRICT
31019	19101	3000001	9/8/2010	\$4,658.64	555170	12 ROGERS COUNTY CONSERVATION DISTRICT
31020	19101	3000001	9/8/2010	\$33.00	555170	82 KONAWA CONSERVATION DISTRICT

**OKLAHOMA CONSERVATION COMMISSION**  
**CLAIMS REGISTER BY PROGRAM**  
**FOR THE PERIOD OF AUGUST 25, 2010 THRU SEPTEMBER 20, 2010**

Voucher	Fund Class	Department	Date	Amount	Account	Payee
31020	19101	3000001	9/8/2010	\$63.47	555170 20	KONAWA CONSERVATION DISTRICT
31020	19101	3000001	9/8/2010	\$139.83	555170 92	KONAWA CONSERVATION DISTRICT
31020	19101	3000001	9/8/2010	\$2,449.16	555170 2	KONAWA CONSERVATION DISTRICT
31020	19101	3000001	9/8/2010	\$2,533.49	555170 6	KONAWA CONSERVATION DISTRICT
31021	19101	3000001	9/9/2010	\$45.00	555170 71	ATOKA COUNTY CONSERVATION DISTRICT
31021	19101	3000001	9/9/2010	\$106.88	555170 26	ATOKA COUNTY CONSERVATION DISTRICT
31021	19101	3000001	9/9/2010	\$369.00	555170 84	ATOKA COUNTY CONSERVATION DISTRICT
31021	19101	3000001	9/9/2010	\$1,943.77	555170 7	ATOKA COUNTY CONSERVATION DISTRICT
31021	19101	3000001	9/9/2010	\$2,500.36	555170 2	ATOKA COUNTY CONSERVATION DISTRICT
31022	19101	3000001	9/9/2010	\$1,933.43	555170 5	ELLIS COUNTY CONSERVATION DISTRICT
31022	19101	3000001	9/9/2010	\$2,292.95	555170 2	ELLIS COUNTY CONSERVATION DISTRICT
31023	19101	3000001	9/9/2010	\$30.75	555170 71	KAY COUNTY CONSERVATION DISTRICT
31023	19101	3000001	9/9/2010	\$37.50	555170 69	KAY COUNTY CONSERVATION DISTRICT
31023	19101	3000001	9/9/2010	\$75.00	555170 76	KAY COUNTY CONSERVATION DISTRICT
31023	19101	3000001	9/9/2010	\$695.00	555170 61	KAY COUNTY CONSERVATION DISTRICT
31023	19101	3000001	9/9/2010	\$2,360.29	555170 7	KAY COUNTY CONSERVATION DISTRICT
31023	19101	3000001	9/9/2010	\$2,727.43	555170 5	KAY COUNTY CONSERVATION DISTRICT
31023	19101	3000001	9/9/2010	\$2,913.30	555170 2	KAY COUNTY CONSERVATION DISTRICT
31024	19101	3000001	9/9/2010	\$2,605.66	555170 5	WEST CADDO CONSERVATION DISTRICT
31024	19101	3000001	9/9/2010	\$2,799.25	555170 2	WEST CADDO CONSERVATION DISTRICT
31025	19101	3000001	9/9/2010	\$35.00	555170 68	TULSA COUNTY CONSERVATION DISTRICT
31027	19101	3000001	9/9/2010	\$51.22	555170 71	LOVE COUNTY CONSERVATION DISTRICT
31027	19101	3000001	9/9/2010	\$97.00	555170 69	LOVE COUNTY CONSERVATION DISTRICT
31027	19101	3000001	9/9/2010	\$300.00	555170 92	LOVE COUNTY CONSERVATION DISTRICT
31027	19101	3000001	9/9/2010	\$2,361.37	555170 7	LOVE COUNTY CONSERVATION DISTRICT
31027	19101	3000001	9/9/2010	\$3,152.88	555170 5	LOVE COUNTY CONSERVATION DISTRICT
31027	19101	3000001	9/9/2010	\$4,951.90	555170 94	LOVE COUNTY CONSERVATION DISTRICT
31056	19101	3000001	9/13/2010	\$40.41	555170 72	MURRAY COUNTY CONSERVATION DISTRICT
31056	19101	3000001	9/13/2010	\$2,209.31	555170 6	MURRAY COUNTY CONSERVATION DISTRICT
31056	19101	3000001	9/13/2010	\$2,555.66	555170 2	MURRAY COUNTY CONSERVATION DISTRICT
31057	19101	3000001	9/13/2010	\$30.00	555170 82	CUSTER COUNTY CONSERVATION DISTRICT
31057	19101	3000001	9/13/2010	\$35.43	555170 80	CUSTER COUNTY CONSERVATION DISTRICT
31057	19101	3000001	9/13/2010	\$44.00	555170 72	CUSTER COUNTY CONSERVATION DISTRICT
31057	19101	3000001	9/13/2010	\$50.63	555170 71	CUSTER COUNTY CONSERVATION DISTRICT
31057	19101	3000001	9/13/2010	\$2,328.66	555170 2	CUSTER COUNTY CONSERVATION DISTRICT
31057	19101	3000001	9/13/2010	\$2,383.62	555170 5	CUSTER COUNTY CONSERVATION DISTRICT
31059	19101	3000001	9/13/2010	\$57.84	555170 72	COMANCHE COUNTY CONSERVATION DISTRICT
31059	19101	3000001	9/13/2010	\$2,453.80	555170 1	COMANCHE COUNTY CONSERVATION DISTRICT
31059	19101	3000001	9/13/2010	\$2,746.51	555170 5	COMANCHE COUNTY CONSERVATION DISTRICT
31060	19101	3000001	9/13/2010	\$2,119.49	555170 1	NORTH FORK OF RED RIVER CONSERVATION
31060	19101	3000001	9/13/2010	\$2,533.33	555170 5	NORTH FORK OF RED RIVER CONSERVATION
31061	19101	3000001	9/13/2010	\$29.95	555170 67	OTTAWA COUNTY CONSERVATION DISTRICT
31061	19101	3000001	9/13/2010	\$55.86	555170 71	OTTAWA COUNTY CONSERVATION DISTRICT
31061	19101	3000001	9/13/2010	\$2,676.46	555170 2	OTTAWA COUNTY CONSERVATION DISTRICT
31062	19101	3000001	9/13/2010	\$2,236.22	555170 7	CRAIG COUNTY CONSERVATION DISTRICT
31062	19101	3000001	9/13/2010	\$2,831.84	555170 5	CRAIG COUNTY CONSERVATION DISTRICT
31063	19101	3000001	9/13/2010	\$1,957.45	555170 9	MUSKOGEE COUNTY CONSERVATION DISTRICT
31063	19101	3000001	9/13/2010	\$2,036.89	555170 1	MUSKOGEE COUNTY CONSERVATION DISTRICT
31067	19101	3000001	9/14/2010	\$91.10	555170 30	TEXAS COUNTY CONSERVATION DISTRICT
31067	19101	3000001	9/14/2010	\$1,794.41	555170 9	TEXAS COUNTY CONSERVATION DISTRICT
31067	19101	3000001	9/14/2010	\$2,076.97	555170 1	TEXAS COUNTY CONSERVATION DISTRICT
31068	19101	3000001	9/14/2010	\$686.93	555170 24	BLAINE COUNTY CONSERVATION DISTRICT
31068	19101	3000001	9/14/2010	\$2,153.03	555170 9	BLAINE COUNTY CONSERVATION DISTRICT
31068	19101	3000001	9/14/2010	\$2,244.25	555170 1	BLAINE COUNTY CONSERVATION DISTRICT

**OKLAHOMA CONSERVATION COMMISSION  
CLAIMS REGISTER BY PROGRAM  
FOR THE PERIOD OF AUGUST 25, 2010 THRU SEPTEMBER 20, 2010**

Voucher	Fund Class	Department	Date	Amount	Account	Payee
31069	19101	3000001	9/14/2010	\$71.74	555170 71	ARBUCKLE CONSERVATION DISTRICT
31069	19101	3000001	9/14/2010	\$3,253.77	555170 3	ARBUCKLE CONSERVATION DISTRICT
31070	19101	3000001	9/14/2010	\$43.98	555170 20	PITTSBURG COUNTY CONSERVATION DISTRICT
31070	19101	3000001	9/14/2010	\$69.42	555170 71	PITTSBURG COUNTY CONSERVATION DISTRICT
31070	19101	3000001	9/14/2010	\$124.87	555170 12	PITTSBURG COUNTY CONSERVATION DISTRICT
31070	19101	3000001	9/14/2010	\$176.00	555170 72	PITTSBURG COUNTY CONSERVATION DISTRICT
31070	19101	3000001	9/14/2010	\$3,318.81	555170 5	PITTSBURG COUNTY CONSERVATION DISTRICT
31071	19101	3000001	9/14/2010	\$2,169.37	555170 1	HARMON COUNTY CONSERVATION DISTRICT
31071	19101	3000001	9/14/2010	\$2,434.23	555170 5	HARMON COUNTY CONSERVATION DISTRICT
31072	19101	3000001	9/14/2010	\$2,565.63	555170 9	NOWATA COUNTY CONSERVATION DISTRICT
31072	19101	3000001	9/14/2010	\$2,954.25	555170 5	NOWATA COUNTY CONSERVATION DISTRICT
31073	19101	3000001	9/14/2010	\$300.00	555170 92	TALIHINA CONSERVATION DISTRICT
31073	19101	3000001	9/14/2010	\$458.58	555170 94	TALIHINA CONSERVATION DISTRICT
31073	19101	3000001	9/14/2010	\$1,951.33	555170 9	TALIHINA CONSERVATION DISTRICT
31073	19101	3000001	9/14/2010	\$3,669.28	555170 5	TALIHINA CONSERVATION DISTRICT
31074	19101	3000001	9/14/2010	\$850.00	555170	LEFLORE COUNTY CONSERVATION DISTRICT
31074	19101	3000001	9/14/2010	\$1,983.85	555170 7	LEFLORE COUNTY CONSERVATION DISTRICT
31074	19101	3000001	9/14/2010	\$2,435.12	555170 2	LEFLORE COUNTY CONSERVATION DISTRICT
31074	19101	3000001	9/14/2010	\$3,828.82	555170 5	LEFLORE COUNTY CONSERVATION DISTRICT
31075	19101	3000001	9/14/2010	\$90.00	555170 71	OSAGE COUNTY CONSERVATION DISTRICT
31075	19101	3000001	9/14/2010	\$110.98	555170 20	OSAGE COUNTY CONSERVATION DISTRICT
31075	19101	3000001	9/14/2010	\$2,505.20	555170 5	OSAGE COUNTY CONSERVATION DISTRICT
31075	19101	3000001	9/14/2010	\$2,791.43	555170 2	OSAGE COUNTY CONSERVATION DISTRICT
31093	19101	3000001	9/15/2010	\$92.68	555170 71	WASHITA COUNTY CONSERVATION DISTRICT
31093	19101	3000001	9/15/2010	\$1,955.39	555170 9	WASHITA COUNTY CONSERVATION DISTRICT
31093	19101	3000001	9/15/2010	\$2,679.46	555170 11	WASHITA COUNTY CONSERVATION DISTRICT
31093	19101	3000001	9/15/2010	\$2,929.92	555170 6	WASHITA COUNTY CONSERVATION DISTRICT
31094	19101	3000001	9/15/2010	\$2,666.10	555170 3	CIMARRON COUNTY CONSERVATION DISTRICT
31094	19101	3000001	9/15/2010	\$3,121.40	555170 9	CIMARRON COUNTY CONSERVATION DISTRICT
31095	19101	3000001	9/15/2010	\$93.50	555170 69	MARSHALL COUNTY CONSERVATION DISTRICT
31095	19101	3000001	9/15/2010	\$96.97	555170 20	MARSHALL COUNTY CONSERVATION DISTRICT
31095	19101	3000001	9/15/2010	\$140.12	555170 71	MARSHALL COUNTY CONSERVATION DISTRICT
31095	19101	3000001	9/15/2010	\$2,015.87	555170 1	MARSHALL COUNTY CONSERVATION DISTRICT
31095	19101	3000001	9/15/2010	\$2,261.24	555170 9	MARSHALL COUNTY CONSERVATION DISTRICT
31096	19101	3000001	9/15/2010	\$121.94	555170 71	GREER COUNTY CONSERVATION DIST
31096	19101	3000001	9/15/2010	\$255.95	555170 80	GREER COUNTY CONSERVATION DIST
31096	19101	3000001	9/15/2010	\$2,206.90	555170 1	GREER COUNTY CONSERVATION DIST
31096	19101	3000001	9/15/2010	\$2,463.35	555170 5	GREER COUNTY CONSERVATION DIST
31097	19101	3000001	9/15/2010	\$2,864.70	555170 2	COTTON COUNTY CONSERVATION DISTRICT
31097	19101	3000001	9/15/2010	\$3,013.52	555170 5	COTTON COUNTY CONSERVATION DISTRICT
31098	19101	3000001	9/15/2010	\$2,444.32	555170 1	DELAWARE CO CONSERVATION DISTRICT
31099	19101	3000001	9/15/2010	\$44.00	555170 72	EAST CANADIAN COUNTY CONSERVATION DISTR
31099	19101	3000001	9/15/2010	\$2,345.69	555170 2	EAST CANADIAN COUNTY CONSERVATION DISTR
31100	19101	3000001	9/15/2010	\$58.02	555170 30	MAJOR COUNTY CONSERVATION DISTRICT
31100	19101	3000001	9/15/2010	\$99.37	555170 71	MAJOR COUNTY CONSERVATION DISTRICT
31100	19101	3000001	9/15/2010	\$2,688.40	555170 2	MAJOR COUNTY CONSERVATION DISTRICT
31100	19101	3000001	9/15/2010	\$2,817.09	555170 9	MAJOR COUNTY CONSERVATION DISTRICT
31101	19101	3000001	9/15/2010	\$55.68	555170 71	LOGAN COUNTY CONSERVATION DISTRICT
31101	19101	3000001	9/15/2010	\$135.00	555170 62	LOGAN COUNTY CONSERVATION DISTRICT
31101	19101	3000001	9/15/2010	\$1,997.96	555170 9	LOGAN COUNTY CONSERVATION DISTRICT
31101	19101	3000001	9/15/2010	\$2,714.22	555170 5	LOGAN COUNTY CONSERVATION DISTRICT
31102	19101	3000001	9/15/2010	\$57.36	555170 20	WOODS COUNTY CONSERVATION DISTRICT
31102	19101	3000001	9/15/2010	\$136.00	555170 80	WOODS COUNTY CONSERVATION DISTRICT
31102	19101	3000001	9/15/2010	\$1,632.59	555170 5	WOODS COUNTY CONSERVATION DISTRICT

**OKLAHOMA CONSERVATION COMMISSION**  
**CLAIMS REGISTER BY PROGRAM**  
**FOR THE PERIOD OF AUGUST 25, 2010 THRU SEPTEMBER 20, 2010**

Voucher	Fund Class	Department	Date	Amount	Account	Payee
31102	19101	3000001	9/15/2010	\$1,675.02	555170	1 WOODS COUNTY CONSERVATION DISTRICT
31113	19101	3000001	9/16/2010	\$51.24	555170	71 SOUTH CADDO CONS DISTRICT
31113	19101	3000001	9/16/2010	\$269.13	555170	94 SOUTH CADDO CONS DISTRICT
31113	19101	3000001	9/16/2010	\$359.00	555170	84 SOUTH CADDO CONS DISTRICT
31113	19101	3000001	9/16/2010	\$2,472.89	555170	2 SOUTH CADDO CONS DISTRICT
31113	19101	3000001	9/16/2010	\$2,637.83	555170	5 SOUTH CADDO CONS DISTRICT
31113	19101	3000001	9/16/2010	\$2,641.53	555170	9 SOUTH CADDO CONS DISTRICT
31114	19101	3000001	9/16/2010	\$375.00	555170	92 LATIMER COUNTY CONSERVATION DISTRICT
31114	19101	3000001	9/16/2010	\$673.89	555170	94 LATIMER COUNTY CONSERVATION DISTRICT
31114	19101	3000001	9/16/2010	\$2,222.99	555170	9 LATIMER COUNTY CONSERVATION DISTRICT
31114	19101	3000001	9/16/2010	\$2,982.58	555170	11 LATIMER COUNTY CONSERVATION DISTRICT
31115	19101	3000001	9/16/2010	\$17.60	555170	72 PUSHMATAHA CONSERVATION DISTRICT #44
31115	19101	3000001	9/16/2010	\$35.70	555170	80 PUSHMATAHA CONSERVATION DISTRICT #44
31115	19101	3000001	9/16/2010	\$56.75	555170	82 PUSHMATAHA CONSERVATION DISTRICT #44
31115	19101	3000001	9/16/2010	\$57.56	555170	84 PUSHMATAHA CONSERVATION DISTRICT #44
31115	19101	3000001	9/16/2010	\$83.95	555170	46 PUSHMATAHA CONSERVATION DISTRICT #44
31115	19101	3000001	9/16/2010	\$91.50	555170	9 PUSHMATAHA CONSERVATION DISTRICT #44
31115	19101	3000001	9/16/2010	\$175.00	555170	62 PUSHMATAHA CONSERVATION DISTRICT #44
31115	19101	3000001	9/16/2010	\$300.00	555170	92 PUSHMATAHA CONSERVATION DISTRICT #44
31116	19101	3000001	9/16/2010	\$2,971.65	555170	9 ADAIR COUNTY CONSERVATION DISTRICT #67
31116	19101	3000001	9/16/2010	\$3,085.65	555170	3 ADAIR COUNTY CONSERVATION DISTRICT #67
31116	19101	3000001	9/16/2010	\$3,660.10	555170	94 ADAIR COUNTY CONSERVATION DISTRICT #67
31118	19101	3000001	9/16/2010	\$11.95	555170	67 CHECOTAH CONSERVATION DISTRICT #20
31118	19101	3000001	9/16/2010	\$17.00	555170	72 CHECOTAH CONSERVATION DISTRICT #20
31118	19101	3000001	9/16/2010	\$52.73	555170	20 CHECOTAH CONSERVATION DISTRICT #20
31118	19101	3000001	9/16/2010	\$64.69	555170	71 CHECOTAH CONSERVATION DISTRICT #20
31118	40000	3000001	9/16/2010	\$139.83	555170	86 CHECOTAH CONSERVATION DISTRICT #20
31118	19101	3000001	9/16/2010	\$200.00	555170	75 CHECOTAH CONSERVATION DISTRICT #20
31118	19101	3000001	9/16/2010	\$1,298.05	555170	2 CHECOTAH CONSERVATION DISTRICT #20
31126	19101	3000001	9/16/2010	\$79.03	555170	71 VALLIANT CONSERVATION DISTRICT
31126	19101	3000001	9/16/2010	\$100.00	555170	62 VALLIANT CONSERVATION DISTRICT
31126	19101	3000001	9/16/2010	\$350.00	555170	92 VALLIANT CONSERVATION DISTRICT
31126	19101	3000001	9/16/2010	\$2,383.65	555170	7 VALLIANT CONSERVATION DISTRICT
31126	19101	3000001	9/16/2010	\$2,756.49	555170	2 VALLIANT CONSERVATION DISTRICT
31127	19101	3000001	9/16/2010	\$95.04	555170	71 DEER CREEK CONSERVATION DISTRICT
31127	19101	3000001	9/16/2010	\$143.91	555170	12 DEER CREEK CONSERVATION DISTRICT
31127	19101	3000001	9/16/2010	\$201.52	555170	80 DEER CREEK CONSERVATION DISTRICT
31127	19101	3000001	9/16/2010	\$263.76	555170	64 DEER CREEK CONSERVATION DISTRICT
31127	19101	3000001	9/16/2010	\$2,201.42	555170	11 DEER CREEK CONSERVATION DISTRICT
31127	19101	3000001	9/16/2010	\$2,530.25	555170	5 DEER CREEK CONSERVATION DISTRICT
31128	19101	3000001	9/16/2010	\$2,715.50	555170	2 JOHNSTON COUNTY CONSERVATION DIST
31128	19101	3000001	9/16/2010	\$2,920.93	555170	5 JOHNSTON COUNTY CONSERVATION DIST
31129	19101	3000001	9/16/2010	\$92.31	555170	71 JACKSON COUNTY CONSERVATION DIST
31129	19101	3000001	9/16/2010	\$527.51	555170	68 JACKSON COUNTY CONSERVATION DIST
31129	19101	3000001	9/16/2010	\$2,329.79	555170	2 JACKSON COUNTY CONSERVATION DIST
31129	19101	3000001	9/16/2010	\$3,361.75	555170	5 JACKSON COUNTY CONSERVATION DIST
31155	19101	3000003	9/17/2010	\$277.00	522110	DEPARTMENT OF CENTRAL SERVICES
31155	19101	3000003	9/17/2010	\$499.00	522110	DEPARTMENT OF CENTRAL SERVICES
31159	19101	3000003	9/17/2010	\$499.00	522110	DEPARTMENT OF CENTRAL SERVICES
31159	19101	3000003	9/17/2010	\$924.35	522110	DEPARTMENT OF CENTRAL SERVICES
31168	19101	3000001	9/20/2010	\$2,368.30	555170	94 HARPER COUNTY CONSERVATION DISTRICT
31169	19101	3000001	9/20/2010	\$2,176.73	555170	9 BEAVER COUNTY CONSERVATION DISTRICT
31169	19101	3000001	9/20/2010	\$2,576.12	555170	3 BEAVER COUNTY CONSERVATION DISTRICT
31170	19101	3000001	9/20/2010	\$2,103.93	555170	9 SHAWNEE CONSERVATION DISTRICT

**OKLAHOMA CONSERVATION COMMISSION  
CLAIMS REGISTER BY PROGRAM  
FOR THE PERIOD OF AUGUST 25, 2010 THRU SEPTEMBER 20, 2010**

Voucher	Fund Class	Department	Date	Amount	Account	Payee
31170	19101	3000001	9/20/2010	\$2,789.32	555170 11	SHAWNEE CONSERVATION DISTRICT
31172	19101	3000001	9/20/2010	\$44.00	555170 72	STEPHENS COUNTY CONSERVATION DISTRICT
31172	19101	3000001	9/20/2010	\$51.90	555170 83	STEPHENS COUNTY CONSERVATION DISTRICT
31172	19101	3000001	9/20/2010	\$142.88	555170 71	STEPHENS COUNTY CONSERVATION DISTRICT
31172	19101	3000001	9/20/2010	\$2,791.57	555170 2	STEPHENS COUNTY CONSERVATION DISTRICT
31172	19101	3000001	9/20/2010	\$2,802.18	555170 5	STEPHENS COUNTY CONSERVATION DISTRICT
31173	19101	3000001	9/20/2010	\$2,173.17	555170 7	UPPER WASHITA CONSERVATION DISTRICT
31173	19101	3000001	9/20/2010	\$2,999.05	555170 5	UPPER WASHITA CONSERVATION DISTRICT
31174	19101	3000001	9/20/2010	\$269.13	555170 94	HASKELL COUNTY CONSERVATION DISTRICT
31174	19101	3000001	9/20/2010	\$2,076.15	555170 12	HASKELL COUNTY CONSERVATION DISTRICT
31174	19101	3000001	9/20/2010	\$2,173.81	555170 5	HASKELL COUNTY CONSERVATION DISTRICT
31174	19101	3000001	9/20/2010	\$2,426.25	555170 2	HASKELL COUNTY CONSERVATION DISTRICT
31175	19101	3000001	9/20/2010	\$36.00	555170 71	PAWNEE COUNTY CONSERVATION DISTRICT
31175	19101	3000001	9/20/2010	\$405.00	555170 61	PAWNEE COUNTY CONSERVATION DISTRICT
31175	19101	3000001	9/20/2010	\$2,334.27	555170 1	PAWNEE COUNTY CONSERVATION DISTRICT
31176	19101	3000001	9/20/2010	\$152.32	555170 26	COAL COUNTY CONSERVATION DISTRICT #19
31176	19101	3000001	9/20/2010	\$2,233.77	555170 5	COAL COUNTY CONSERVATION DISTRICT #19
31176	19101	3000001	9/20/2010	\$2,282.40	555170 1	COAL COUNTY CONSERVATION DISTRICT #19
31177	19101	3000001	9/20/2010	\$2,010.83	555170 9	GRANT COUNTY CONSERVATION DISTRICT
31177	19101	3000001	9/20/2010	<u>\$2,325.39</u>	555170 2	GRANT COUNTY CONSERVATION DISTRICT

**\$418,030.71 Field Services**

**Conservation Education**

30968	19001	3000004	9/3/2010	\$1,496.00	531150	AUTHORITY ORDER-PCARD
-------	-------	---------	----------	------------	--------	-----------------------

**District Services**

30983	19101	3000005	9/8/2010	\$207.00	521120	KNAUF LISA R
30983	19101	3000005	9/8/2010	\$278.88	521150	KNAUF LISA R
30983	19101	3000005	9/8/2010	\$13.50	521210	KNAUF LISA R
30983	19101	3000005	9/8/2010	\$368.75	521220	KNAUF LISA R
30983	19101	3000005	9/8/2010	\$274.50	521230	KNAUF LISA R
30983	19101	3000005	9/8/2010	\$25.00	521240	KNAUF LISA R
30983	19101	3000005	9/8/2010	\$95.54	521250	KNAUF LISA R
30983	19101	3000005	9/8/2010	<u>\$730.85</u>	521260	KNAUF LISA R

**\$1,994.02 District Services**

**Abandoned Mine Land Reclamation**

30956	40000	4000005	9/1/2010	\$2,495.00	515450	EAGLE ENVIRONMENTAL CONSULTING INC
30962	40000	4000001	9/1/2010	\$6,980.00	515060	BRUCE G LUTTRELL CPA PC
30968	40000	4000001	9/3/2010	\$760.00	541130	AUTHORITY ORDER-PCARD
30969	40000	4000001	9/3/2010	\$2,167.16	522110	AUTHORITY ORDER-PCARD TVL
31006	40000	4000005	9/8/2010	\$290.00	515440	KEEL BULLDOZING
31007	40000	4000005	9/8/2010	\$25,973.23	545110	TALON DRILLING LP
31008	40000	4000005	9/8/2010	\$12.79	531130	AT & T MOBILITY NATIONAL ACCOUNT LLC
31026	40000	4000005	9/9/2010	\$789.47	534290	COMDATA NETWORK INC
31080	40000	4000005	9/15/2010	\$83.50	561130	ROYE HENRY L
31081	40000	4000005	9/14/2010	\$49.99	555170 88	ROGERS COUNTY CONSERVATION DISTRICT

**OKLAHOMA CONSERVATION COMMISSION  
CLAIMS REGISTER BY PROGRAM  
FOR THE PERIOD OF AUGUST 25, 2010 THRU SEPTEMBER 20, 2010**

Voucher	Fund Class	Department	Date	Amount	Account	Payee
31084	40000	4000006	9/14/2010	\$7,476.36	515440	PUSH N PULL DOZER SERVICE LLC
31112	40000	4000005	9/16/2010	\$38.56	531110	FEDEX FREIGHT EAST INC
31138	40000	4000005	9/17/2010	\$247.50	521110	SPURLOCK DORSEY E
31139	40000	4000005	9/17/2010	\$294.50	521110	NUTTLE CHARLES E
31140	40000	4000005	9/17/2010	\$100.00	521110	REEDER TRACY L
31141	40000	4000005	9/17/2010	\$558.00	521110	WEAVER WILLIAM C
31145	40000	4000005	9/17/2010	\$2,495.00	515990	EAGLE ENVIRONMENTAL CONSULTING INC
31146	40000	4000005	9/17/2010	\$2,495.00	515990	EAGLE ENVIRONMENTAL CONSULTING INC
31147	40000	4000005	9/17/2010	<u>\$10.00</u>	515450	OSU-EXTENSION

**\$53,316.06 Abandoned Mine Land Reclamation**

**Water Quality**

30891	40000	5000001	8/28/2010	\$276.00	521120	FIRST RICKY C
30892	40000	5000001	8/28/2010	\$276.00	521120	RAMMING JASON M
30892	40000	5000001	8/28/2010	\$3.24	521140	RAMMING JASON M
30892	40000	5000001	8/28/2010	\$450.63	521150	RAMMING JASON M
30893	40000	5000001	8/28/2010	\$17.04	521140	RAMMING JASON M
30894	40000	5000001	8/28/2010	\$276.00	521120	COFFEY ZACHARY T
30924	40000	5000001	8/31/2010	\$161.08	531110	VOICES OF THE SOUTH WEST
30925	40000	5000001	8/31/2010	\$25.80	534110	EUREKA WATER COMPANY
30926	40000	5000001	8/31/2010	\$545.00	522150	NORTHWEST ENVIRONMENTAL TRAINING CTR
30927	40000	5000001	8/31/2010	\$128.90	532140	SHARP ELECTRONICS CORPORATION
30943	40000	5000001	9/1/2010	\$184.00	521120	SHEPHERD NICHOLAS LEE
30944	40000	5000001	9/1/2010	\$184.00	521120	DESHAZO WILLIAM J
30944	40000	5000001	9/1/2010	\$641.20	521150	DESHAZO WILLIAM J
30945	40000	5000001	9/1/2010	\$69.00	521120	SHOCKLEY WESLEY E
30945	40000	5000001	9/1/2010	\$65.95	521150	SHOCKLEY WESLEY E
30946	40000	5000001	9/1/2010	\$69.00	521120	MOORE JR. LEONARD I
30946	40000	5000001	9/1/2010	\$65.26	521150	MOORE JR. LEONARD I
30947	40000	5000001	9/1/2010	\$301.75	521230	BLEVINS MARGARET M
30947	40000	5000001	9/1/2010	\$184.00	521260	BLEVINS MARGARET M
30948	40000	5000001	9/1/2010	\$209.96	515010	WEST GROUP
30949	40000	5000001	9/1/2010	\$106.64	541180	FASTENAL COMPANY INC
30950	40000	5000001	9/1/2010	\$600.00	555170 88	CENTRAL N CANADIAN RIVER CONSERVATION
30951	40000	5000001	9/1/2010	\$300.00	555170 88	BLAINE COUNTY CONSERVATION DISTRICT
30952	40000	5000001	9/1/2010	\$65.00	541110	DEPARTMENT OF CENTRAL SERVICES
30953	40000	5000001	9/1/2010	\$65.00	522150	TULSA AREA CONSERVATION FOUNDATION
30955	40000	5000001	9/1/2010	\$125.00	555170 88	ADAIR COUNTY CONSERVATION DISTRICT #67
30957	40000	5000001	9/3/2010	\$600.00	555170 88	DELAWARE CO CONSERVATION DISTRICT
30958	40000	5000001	9/1/2010	\$3,500.00	554230 29	WYNENA DAUGHTERY
30959	40000	5000001	9/1/2010	\$2,141.62	515990	MARSHALL ENVIRONMENTAL MANAGEMENT INC
30960	40000	5000001	9/1/2010	\$102.51	531130	VERIZON WIRELESS
30961	40000	5000001	9/1/2010	\$35.62	531130	VERIZON WIRELESS
30968	40000	5000001	9/3/2010	\$100.00	531260	AUTHORITY ORDER-PCARD
30968	40000	5000001	9/3/2010	\$72.78	533180	AUTHORITY ORDER-PCARD
30968	40000	5000001	9/3/2010	\$116.13	536140	AUTHORITY ORDER-PCARD
30968	40000	5000001	9/3/2010	\$3,426.12	537190	AUTHORITY ORDER-PCARD
30993	40000	5000001	9/8/2010	\$195.25	521120	CARNOTT DEBORAH J
30993	40000	5000001	9/8/2010	\$3.65	521140	CARNOTT DEBORAH J
30994	49000	5000001	9/8/2010	\$135.00	515450	UNIVERSITY OF OKLAHOMA
30995	49000	5000001	9/8/2010	\$15,054.33	515450	UNIVERSITY OF OKLAHOMA

**OKLAHOMA CONSERVATION COMMISSION  
CLAIMS REGISTER BY PROGRAM  
FOR THE PERIOD OF AUGUST 25, 2010 THRU SEPTEMBER 20, 2010**

Voucher	Fund Class	Department	Date	Amount	Account	Payee
30996	49000	5000001	9/8/2010	\$34,997.30	515450	UNIVERSITY OF OKLAHOMA
30997	49000	5000001	9/8/2010	\$9,502.84	515450	UNIVERSITY OF OKLAHOMA
30998	40000	5000001	9/8/2010	\$5.90	532140	IKON OFFICE SOLUTIONS
30998	40000	5000001	9/8/2010	\$98.70	532140	IKON OFFICE SOLUTIONS
30998	40000	5000001	9/8/2010	\$293.72	532140	IKON OFFICE SOLUTIONS
30999	40000	5000001	9/8/2010	\$4,510.00	532110	LINCOLN PLAZA OFFICE BUILDING LLC
31000	40000	5000001	9/8/2010	\$384.30	532140	SHARP ELECTRONICS CORPORATION
31001	40000	5000001	9/8/2010	\$25.80	534110	EUREKA WATER COMPANY
31040	40000	5000001	9/13/2010	\$200.27	533110	OFFICE OF STATE FINANCE
31041	40000	5000001	9/13/2010	\$674.71	531130	AT & T MOBILITY NATIONAL ACCOUNT LLC
31076	40000	5000001	9/14/2010	\$28.61	531110	NICHOLS HILL PACK-N-SHIP
31077	40000	5000001	9/14/2010	\$4,000.00	515820	NORTHEASTERN STATE UNIVERSITY
31078	40000	5000001	9/14/2010	\$300.00	555170 88	BLAINE COUNTY CONSERVATION DISTRICT
31079	40000	5000001	9/14/2010	\$64.79	531110	SISCO TRUE VALUE HARDWARE
31087	40000	5000001	9/14/2010	\$100.00	531190	GRAND LAKE ASSOCIATION
31088	40000	5000001	9/14/2010	\$647.26	549110	OKLAHOMA DEPARTMENT OF CORRECTIONS
31088	40000	5000001	9/14/2010	\$1,014.42	549110	OKLAHOMA DEPARTMENT OF CORRECTIONS
31090	40000	5000001	9/14/2010	\$200.00	555170	NORTH CADDO CONSERVATION DISTRICT
31133	40000	5000001	9/17/2010	\$69.00	521120	SHOCKLEY WESLEY E
31133	40000	5000001	9/17/2010	\$56.74	521150	SHOCKLEY WESLEY E
31134	40000	5000001	9/17/2010	\$230.00	521120	CARR JERRY D
31134	40000	5000001	9/17/2010	\$559.58	521150	CARR JERRY D
31135	40000	5000001	9/17/2010	\$69.00	521120	LAMB JEANETTE
31135	40000	5000001	9/17/2010	\$30.37	521140	LAMB JEANETTE
31135	40000	5000001	9/17/2010	\$70.00	521150	LAMB JEANETTE
31136	40000	5000001	9/17/2010	\$161.00	521120	LEMMON JEAN R
31136	40000	5000001	9/17/2010	\$222.32	521150	LEMMON JEAN R
31137	40000	5000001	9/17/2010	\$460.00	521120	CARR JERRY D
31137	40000	5000001	9/17/2010	\$47.43	521140	CARR JERRY D
31137	40000	5000001	9/17/2010	\$830.56	521150	CARR JERRY D
31144	40000	5000001	9/17/2010	\$25.80	534110	EUREKA WATER COMPANY
31148	40000	5000001	9/17/2010	\$300.00	555170 88	EAST CANADIAN COUNTY CONSERVATION DISTRICT
31149	40000	5000001	9/17/2010	\$209.96	515010	WEST GROUP
31150	40000	5000001	9/17/2010	\$60,634.00	515820	DEPARTMENT OF AGRICULTURE FOOD AND FORES
31151	40000	5000001	9/17/2010	\$1,033.74	515660	DEPARTMENT OF AGRICULTURE FOOD AND FORES
31153	40000	5000001	9/17/2010	\$11,725.31	554230 22	WADE HAMPTON
31155	40000	5000001	9/17/2010	\$598.00	522110	DEPARTMENT OF CENTRAL SERVICES
31155	40000	5000001	9/17/2010	\$1,318.00	522110	DEPARTMENT OF CENTRAL SERVICES
31155	40000	5000001	9/17/2010	\$7,930.52	522110	DEPARTMENT OF CENTRAL SERVICES
31156	40000	5000001	9/17/2010	\$16.73	531130	AT&T CORPORATION
31159	40000	5000001	9/17/2010	\$598.00	522110	DEPARTMENT OF CENTRAL SERVICES
31159	40000	5000001	9/17/2010	\$1,318.00	522110	DEPARTMENT OF CENTRAL SERVICES
31159	40000	5000001	9/17/2010	\$8,030.70	522110	DEPARTMENT OF CENTRAL SERVICES

**\$184,471.84 Water Quality**

**Cost Share - Locally Led**

30864	25000	5000004	8/26/2010	\$1,569.95	554230	1 KETCHUM STANLEY W
30886	25000	5000004	8/27/2010	\$1,325.00	554230	1 OLIVER B ADAMS
30887	25000	5000004	8/27/2010	\$1,312.50	554230	5 DANA WATSON
30909	25000	5000004	8/31/2010	\$378.66	554230 26	OPITZ FARMS INC
30909	25000	5000004	8/31/2010	\$378.66	554230 11	OPITZ FARMS INC

**OKLAHOMA CONSERVATION COMMISSION  
CLAIMS REGISTER BY PROGRAM  
FOR THE PERIOD OF AUGUST 25, 2010 THRU SEPTEMBER 20, 2010**

Voucher	Fund Class	Department	Date	Amount	Account	Payee
30910	25000	5000004	8/31/2010	\$969.00	554230 21	JUSTIN WOODRUFF
30910	25000	5000004	8/31/2010	\$2,734.88	554230 28	JUSTIN WOODRUFF
30911	25000	5000004	8/31/2010	\$1,387.08	554230 28	JERRID CROSS
30912	25000	5000004	8/31/2010	\$674.40	554230 1	REGINA GOURGUES
30913	25000	5000004	8/31/2010	\$913.13	554230 28	JAMES P LONGUEVILLE
30914	25000	5000004	8/31/2010	\$1,320.00	554230 1	BOBBY H MCBRIDE
30915	25000	5000004	8/31/2010	\$2,400.00	554230 13	KENT PEEPLES
30916	25000	5000004	8/31/2010	\$2,000.00	554230 1	MIKE ABBOTT
30917	25000	5000004	8/31/2010	\$1,140.00	554230 21	JD WILLIAMS
30918	25000	5000004	8/31/2010	\$15.77	554230 3	BRAD A FENTER
30918	25000	5000004	8/31/2010	\$30.88	554230 26	BRAD A FENTER
30918	25000	5000004	8/31/2010	\$1,432.12	554230 1	BRAD A FENTER
30919	25000	5000004	8/31/2010	\$1,350.00	554230 1	STANLEY SPRADLIN
30920	25000	5000004	8/31/2010	\$1,323.00	554230 11	ANNA LOU STEPHENS
30921	25000	5000004	8/31/2010	\$65.63	554230 26	BILLER FARM PARTNERSHIP LLC
30921	25000	5000004	8/31/2010	\$91.88	554230 3	BILLER FARM PARTNERSHIP LLC
30921	25000	5000004	8/31/2010	\$1,225.50	554230 9	BILLER FARM PARTNERSHIP LLC
30932	25000	5000004	8/31/2010	\$1,979.25	554230 1	MCCAULEY GLYNN
30933	25000	5000004	8/31/2010	\$131.63	554230 4	IRENE GABRIEL
30984	25000	5000004	9/8/2010	\$1,600.00	554230 13	HINDS OPERATING INC
30985	25000	5000004	9/8/2010	\$1,726.38	554230 1	J H HEATLY
30986	25000	5000004	9/8/2010	\$690.00	554230 28	RICHARD HOOD
30986	25000	5000004	9/8/2010	\$942.50	554230 13	RICHARD HOOD
30986	25000	5000004	9/8/2010	\$3,367.50	554230 23	RICHARD HOOD
30987	25000	5000004	9/8/2010	\$2,500.00	554230 21	JAMES KEENEY
30988	25000	5000004	9/8/2010	\$1,923.75	554230 21	BOB BROWN
30989	25000	5000004	9/8/2010	\$3,500.00	554230 1	PAT HAWLEY
30990	25000	5000004	9/8/2010	\$1,086.00	554230 26	JOHN WESLEY BERRY
30990	25000	5000004	9/8/2010	\$2,172.00	554230 11	JOHN WESLEY BERRY
30991	25000	5000004	9/8/2010	\$1,184.07	554230 1	JENNI CAMPBELL
30992	25000	5000004	9/8/2010	\$935.00	554230 17	DALE CHRISTIENSON
31028	25000	5000004	9/9/2010	\$1,690.82	554230 1	JOHN WESLEY HARDEN
31029	25000	5000004	9/9/2010	\$2,497.69	554230 1	JIMMY L PALLISSARD
31030	25000	5000004	9/9/2010	\$2,500.00	554230 1	JIMMIE D SUMNER
31031	25000	5000004	9/9/2010	\$832.92	554230 5	JAMES SMALLWOOD
31032	25000	5000004	9/9/2010	\$1,350.00	554230 1	ROY WHITE
31033	25000	5000004	9/9/2010	\$665.00	554230 21	PAM HAMILTON
31033	25000	5000004	9/9/2010	\$1,807.40	554230 13	PAM HAMILTON
31034	25000	5000004	9/9/2010	\$363.00	554230 28	DELMAR ALLEN
31042	25000	5000004	9/13/2010	\$991.30	554230 28	EMMADELLE GIBSON
31043	25000	5000004	9/13/2010	\$862.50	554230 13	JAMES W MOORE
31044	25000	5000004	9/13/2010	\$1,500.00	554230 28	DAVID C SAMPSON
31045	25000	5000004	9/13/2010	\$1,500.00	554230 1	JERRY HARMON
31046	25000	5000004	9/13/2010	\$304.50	554230 11	DONALD PARTAIN JR
31046	25000	5000004	9/13/2010	\$435.00	554230 26	DONALD PARTAIN JR
31047	25000	5000004	9/13/2010	\$1,726.73	554230 1	JAMES E MONTGOMERY
31064	25000	5000004	9/14/2010	\$3,304.95	554230 8	SAM D SMITH
31065	25000	5000004	9/14/2010	\$1,250.00	554230 17	DAVID CHAMBERS
31066	25000	5000004	9/14/2010	\$1,325.00	554230 5	DANE YANDELL
31103	25000	5000004	9/15/2010	\$1,520.00	554230 21	SAM LITTAU
31104	25000	5000004	9/15/2010	\$545.57	554230 17	JESSIE J YOUNG
31105	25000	5000004	9/15/2010	\$688.80	554230 17	NOLAN J SMITH
31106	25000	5000004	9/15/2010	\$450.00	554230 28	JIMMY RODGERS JR
31107	25000	5000004	9/15/2010	\$2,000.00	554230 21	ALMA JEAN CRYER



**OKLAHOMA CONSERVATION COMMISSION  
CLAIMS REGISTER BY PROGRAM  
FOR THE PERIOD OF AUGUST 25, 2010 THRU SEPTEMBER 20, 2010**

Voucher	Fund Class	Department	Date	Amount	Account	Payee
31108	25000	5000004	9/15/2010	\$3,082.95	554230	5 ROBBIE GIPSON
31109	25000	5000004	9/15/2010	\$5,000.00	554230	28 MARK K LATHAM
31110	25000	5000004	9/15/2010	\$1,304.25	554230	21 JERRY SNIDER
31111	25000	5000004	9/15/2010	\$91.88	554230	26 PHILLIP DAVIS
31111	25000	5000004	9/15/2010	\$367.50	554230	11 PHILLIP DAVIS
31132	25000	5000004	9/17/2010	\$2,000.00	554230	OQUIN ERIN L
31162	25000	5000004	9/17/2010	\$347.84	554230	17 JONATHAN A YOUNG
31163	25000	5000004	9/17/2010	\$700.00	554230	17 BETTY JAMISON
31164	25000	5000004	9/17/2010	\$1,280.25	554230	21 GEORGE LARCADE
31165	25000	5000004	9/17/2010	<u>\$364.08</u>	554230	17 RICHARD W SMITH

**\$92,426.05 Cost Share - Locally Led**

**Cost Share - Priority Watershed**

30895	25000	5000012	8/28/2010	\$3,600.00	554230	1 KREG BUTLER
30896	25000	5000009	8/28/2010	\$2,147.30	554230	39 CARL CHAPMAN
30897	25000	5000012	8/28/2010	\$1,100.00	554230	1 DAVID ROBERTS
30898	40000	5000011	8/28/2010	\$626.10	554230	22 KENNY AHRENS
30898	40000	5000011	8/28/2010	\$930.00	554230	13 KENNY AHRENS
30898	40000	5000011	8/28/2010	\$1,710.72	554230	5 KENNY AHRENS
30899	40000	5000006	8/28/2010	\$435.00	554230	34 HUME IVA
30900	40000	5000006	8/28/2010	\$2,560.00	554230	29 VAUGHN OTTO
30901	40000	5000006	8/28/2010	\$2,913.84	554230	5 DAVIDSON ANNDORA S
30902	25000	5000012	8/28/2010	\$156.51	554230	23 WILSON BARRY D
30902	25000	5000012	8/28/2010	\$1,106.32	554230	23 WILSON BARRY D
30902	25000	5000012	8/28/2010	\$2,405.03	554230	13 WILSON BARRY D
30903	25000	5000012	8/28/2010	\$1,003.52	554230	18 CHEENENG THAO
30904	25000	5000012	8/28/2010	\$567.60	554230	22 PERRY HESTON
30904	25000	5000012	8/28/2010	\$925.88	554230	13 PERRY HESTON
30904	25000	5000012	8/28/2010	\$1,599.36	554230	21 PERRY HESTON
30904	25000	5000012	8/28/2010	\$1,869.53	554230	23 PERRY HESTON
30905	40000	5000011	8/28/2010	\$653.00	554230	1 JOEL HANCOCK
30905	40000	5000011	8/28/2010	\$3,137.40	554230	5 JOEL HANCOCK
30905	40000	5000011	8/28/2010	\$13,461.12	554230	36 JOEL HANCOCK
30905	40000	5000011	8/28/2010	\$13,900.05	554230	22 JOEL HANCOCK
30922	40000	5000011	8/31/2010	\$775.43	554230	22 KIRBY CARL J
30923	40000	5000011	8/31/2010	\$7,566.00	554230	1 BOBBY HENDREN
31002	40000	5000011	9/8/2010	\$900.30	554230	22 JOEL HANCOCK
31002	40000	5000011	9/8/2010	\$1,642.50	554230	23 JOEL HANCOCK
31002	40000	5000011	9/8/2010	\$2,125.20	554230	13 JOEL HANCOCK
31002	40000	5000011	9/8/2010	\$7,623.00	554230	21 JOEL HANCOCK
31003	40000	5000011	9/8/2010	\$500.47	554230	22 RICHARD MCKEE
31003	40000	5000011	9/8/2010	\$553.80	554230	13 RICHARD MCKEE
31004	25000	5000009	9/8/2010	\$16,666.20	554230	39 PARKER CHUCK
31005	25000	5000012	9/8/2010	\$953.28	554230	5 DUSTIN FIELD
31005	25000	5000012	9/8/2010	\$1,400.00	554230	1 DUSTIN FIELD
31082	25000	5000012	9/14/2010	\$260.77	554230	22 STEVE REECE
31152	40000	5000006	9/17/2010	\$7,418.56	554230	1 DAVID STRATTON
31154	25000	5000009	9/17/2010	<u>\$3,060.00</u>	554230	34 BRYAN COX

**\$108,253.79 Cost Share - Priority Watershed**

**OKLAHOMA CONSERVATION COMMISSION  
CLAIMS REGISTER BY PROGRAM  
FOR THE PERIOD OF AUGUST 25, 2010 THRU SEPTEMBER 20, 2010**

Voucher	Fund Class	Department	Date	Amount	Account	Payee
---------	------------	------------	------	--------	---------	-------



**CREP**

30928	25000	5000014	9/1/2010	\$58.67	532140	SHARP ELECTRONICS CORPORATION
30928	25000	5000014	9/1/2010	\$128.80	532140	SHARP ELECTRONICS CORPORATION
31041	25000	5000014	9/13/2010	\$295.06	531130	AT & T MOBILITY NATIONAL ACCOUNT LLC
31155	25000	5000014	9/17/2010	\$2,485.00	522110	DEPARTMENT OF CENTRAL SERVICES
31156	25000	5000014	9/17/2010	\$5.78	531130	AT&T CORPORATION
31159	25000	5000014	9/17/2010	<u>\$2,485.00</u>	522110	DEPARTMENT OF CENTRAL SERVICES

**\$5,458.31 CREP**

**\$1,593,981.86 Total Claims Paid**

Posted Billing dynamic date range: Previous Cycledate range: 7/28/2010 to 8/27/2010

## CARDHOLDER STATEMENT (CENTRAL BILL)

Processor, Lvl: 1, Units: CONSERVATION COMMISSION

Include Reference Numbers: True, Include POS Codes: False, Include Cards: All, Include Product Types: All, Include States: All,

Include Cities: All, Include Account Status: All, Include MCC Groups: All, Include MCC Actions: All

Include Original Currency: True, Include Transaction Notes: True, Include Line Item Detail: True, GSA Program: False

### 645 CONSERVATION COMMSN 64

**Account #: \*\*\*\*\*022881**

2800 N LINCOLN  
 SUITE 160  
 OKLAHOMA CITY, OK 731054201

UNIT: CONSERVATION COMMISSION  
 A/O: STEVEN COFFMAN

--

	Single Purchase	Daily	Cycle	MCC Groups:
<b>Dollar Limits:</b>	\$0.00	\$0.00	\$60,000.00	STATE OK Exclude
<b>Volume Limits:</b>		0	0	

	Tran/Post Date	Merchant & Location	Allocation Notes/Details	Reference #	Orig Currency Aml/Code/ Conversion	Reported Tax	Transaction Amount
	08/09/10	PAYMENT RECEIVED -- THANK		75405010221000000000013			(\$10,318.15)
	08/09/10	YOU		N			
		0001					
<b>Count: 1</b>							<b>(\$10,318.15)</b>

	Tran Count	Reported Tax	Net Tran Amt
TRANSACTIONS TOTAL:	0	\$0.00	\$0.00
DIVERTED TRANSACTIONS TOTAL:	0	\$0.00	\$0.00
I-PURCHASE TRANSACTIONS TOTAL:	0	\$0.00	\$0.00
<b>GRAND TOTAL</b>	<b>1</b>	<b>\$0.00</b>	<b>\$0.00</b>

\* Indicates a disputed transaction.

Posted Billing dynamic date range: Previous Cycledate range: 7/28/2010 to 8/27/2010

## CARDHOLDER STATEMENT (CENTRAL BILL)

Processor, Lvl: 1, Units: CONSERVATION COMMISSION  
 Include Reference Numbers: True, Include POS Codes: False, Include Cards: All, Include Product Types: All, Include States: All,  
 Include Cities: All, Include Account Status: All, Include MCC Groups: All, Include MCC Actions: All  
 Include Original Currency: True, Include Transaction Notes: True, Include Line Item Detail: True, GSA Program: False

**JANA CHICOINE**

**Account #: \*\*\*\*\*372320**

2800 N LINCOLN BLVD SUITE 160  
 OKLAHOMA CITY, OK 731054201

UNIT: CONSERVATION COMMISSION  
 A/O: STEVEN COFFMAN

--

	Single Purchase	Daily	Cycle	MCC Groups:
<b>Dollar Limits:</b>	\$5,000.00	\$0.00	\$25,000.00	OK64501 Exclude
<b>Volume Limits:</b>		99	999	

--

Tran/Post	Merchant & Location	Allocation Notes/Details	Reference #	Orig Currency Amt/Code/ Conversion	Reported Tax	Transaction Amount
07/26/10	STAPLES CONTRACT COMMERC		85450780208118000151236			\$7.10
07/28/10	800-5824774, CO					
		100016459002808009001001191013000004	6450536130N			
		<i>Educ-binder</i>				
		DESC	QTY	UNIT COST	UM	EXT AMT
		BNDR,D-RNG,DLX,,OVRLAY F/	1.00	\$7.10	EA	\$7.10
07/27/10	STAPLES CONTRACT COMMERC		85450780209118000184087			\$23.00
07/29/10	800-5824774, CO					
		100016459002808006001001191012000001	6450536140N			
		<i>DP-printer ink-Boney</i>				
		DESC	QTY	UNIT COST	UM	EXT AMT
		GCR2077311200 HP NO. 56 BL	1.00	\$23.00	EA	\$23.00
07/28/10	STAPLES CONTRACT COMMERC		85450780210118000161207			\$296.00
07/30/10	800-5824774, CO					
		100016459002475002001001190011000001	6450536140N			
		<i>printer ink</i>				
		DESC	QTY	UNIT COST	UM	EXT AMT
		GCR2077311295 LASERJET COL	1.00	\$282.00	EA	\$282.00
		GCR2077311520 CTRG,INKJET,	1.00	\$14.00	EA	\$14.00
07/31/10	DELL SALES & SERVICE		55432860212000505480403		\$7.12	\$92.11
08/02/10	866-393-9460, TX					
		100016459002808005001001191011000005	6450541120N			
		<i>Info-external hard drive</i>				
		DESC	QTY	UNIT COST	UM	EXT AMT
		1.5TB Elements External Hard D	1.00	\$84.99	PCE	\$84.99
07/29/10	DRI*IMTOO MEDIA TOOL		55131580212400532017855			\$15.95
08/02/10	CARDQUERY.COM, MN					
		100016459002808006001001191012000001	6450536150N			
		<i>DP-backup disk for Mediatool software</i>				

Posted Billing dynamic date range: Previous Cycledate range: 7/28/2010 to 8/27/2010

**JANA CHICOINE**

**Account #: \*\*\*\*\*372320**

<i>Tran/Post Date</i>	<i>Merchant &amp; Location</i>	<i>Allocation Notes/Details</i>	<i>Reference #</i>	<i>Orig Currency</i>	<i>Reported Tax</i>	<i>Transaction Amount</i>	
07/29/10	DRI*IMTOO MEDIA TOOL		55131580212400532003244			\$129.95	
08/02/10	CARDQUERY.COM, MN	100016459002808006001001191012000001 <i>DP-software</i>	6450541130N				
08/02/10	SOUTH CENTRAL INDUSTRI		85419360215900010922272			\$72.78	
08/04/10	SHAWNEE, OK	100016459002808001001001400005000001 <i>WQ-Blue Thumb-paper towels for office</i>	664600000 6450533180N				
<b>Transactions Totals</b>						<b>Count: 7</b>	<b>\$636.89</b>

	<i>Tran Count</i>	<i>Reported Tax</i>	<i>Net Tran Amt</i>
TRANSACTIONS TOTAL:	7	\$7.12	\$636.89
DIVERTED TRANSACTIONS TOTAL:	0	\$0.00	\$0.00
I-PURCHASE TRANSACTIONS TOTAL:	0	\$0.00	\$0.00
<b>GRAND TOTAL</b>	<b>7</b>	<b>\$7.12</b>	<b>\$636.89</b>

\* Indicates a disputed transaction.

Posted Billing dynamic date range: Previous Cycledate range: 7/28/2010 to 8/27/2010

## CARDHOLDER STATEMENT (CENTRAL BILL)

Processor, Lvl: 1, Units: CONSERVATION COMMISSION

Include Reference Numbers: True, Include POS Codes: False, Include Cards: All, Include Product Types: All, Include States: All,

Include Cities: All, Include Account Status: All, Include MCC Groups: All, Include MCC Actions: All

Include Original Currency: True, Include Transaction Notes: True, Include Line Item Detail: True, GSA Program: False

### JANA CHICOINE

**Account #: \*\*\*\*\*865627**

2800 N LINCOLN STE 160  
OKLAHOMA CITY, OK 731054201

UNIT: TRAVEL-645  
A/O: STEVEN COFFMAN

--

	Single Purchase	Daily	Cycle	MCC Groups:
<b>Dollar Limits:</b>	\$2,500.00	\$0.00	\$25,000.00	OKTRAVEL Include
<b>Volume Limits:</b>		99	999	

--

Tran/Post Date	Merchant & Location	Allocation Notes/Details	Reference #	Orig Currency Amt/Code/ Conversion	Reported Tax	Transaction Amount
08/23/10	AMERICAN	00179011884192	55417340236582364299119			\$514.80
08/25/10	OKLAHOMA CITY, OK					
		300016459002809003001001400004000001	152520000	6450522110N		
		airline ticket-Cardwell-National NAAML conference-Scranton, PA				
		PASSENGER	TICKET #	TRAVEL DATE	LEGS	
		CARDWELL/RONALD	00179011884192	09/18/10	OKC AA S ORD AA S AVP AA S ORD AA S OKC	
08/23/10	AMERICAN	00179011884203	55417340236582364296610			\$514.80
08/25/10	OKLAHOMA CITY, OK					
		300016459002809003001001400004000001	152520000	6450522110N		
		Airline ticket-Sharp-National NAAML conference-Scranton, Pa				
		PASSENGER	TICKET #	TRAVEL DATE	LEGS	
		SHARPWILLIAM M	00179011884203	09/18/10	OKC AA S ORD AA S AVP AA S ORD AA S OKC	
08/23/10	AMERICAN	00179011884214	55417340236582364287957			\$514.80
08/25/10	OKLAHOMA CITY, OK					
		300016459002809003001001400004000001	152520000	6450522110N		
		Airline ticket-Kastl-National NAAML conference-Scranton, PA				
		PASSENGER	TICKET #	TRAVEL DATE	LEGS	
		KASTLMICHAEL L	00179011884214	09/18/10	OKC AA S ORD AA S AVP AA S ORD AA S OKC	
08/23/10	AGNT FEE	89005266788200	55417340236582364714414			\$26.99
08/25/10	TRAVEL AGENTS, OK					
		300016459002809003001001400004000001	152520000	6450522110N		
		Agent fee-Cardwell-Annual NAAML Conference-Scranton, Pa				
		PASSENGER	TICKET #	TRAVEL DATE	LEGS	
		CARDWELL/RONALD	89005266788200	08/23/10	XAA XD Y XAO	
08/23/10	AGNT FEE	89005266788211	55417340236582364688790			\$26.99
08/25/10	TRAVEL AGENTS, OK					
		300016459002809003001001400004000001	152520000	6450522110N		
		Agent fee-Sharp-National NAAML conference-Scranton, PA				
		PASSENGER	TICKET #	TRAVEL DATE	LEGS	

Posted Billing dynamic date range: Previous Cycledate,range: 7/28/2010 to 8/27/2010

**JANA CHICOINE**

**Account #: \*\*\*\*\*865627**

Tran/Post Date	Merchant & Location	Allocation Notes/Details	Reference #	Orig Currency	Reported Tax	Transaction Amount	
08/23/10	SHARP/WILLIAM M		89005266788211	08/23/10	XAA XD Y XAO		
08/23/10	AGNT FEE	89005266788222	55417340236582364699144			\$26.99	
08/25/10	TRAVEL AGENTS, OK						
	300016459002809003001001400004000001	152520000	6450522110N				
	Agent fee-Kastl- National NAAML conference-Scranton, Pa						
	PASSENGER		TICKET #	TRAVEL DATE	LEGS		
	KASTL/MICHAEL L		89005266788222	08/23/10	XAA XD Y XAO		
08/24/10	AMERICAN	00179011884413	55417340237582375878819			\$514.80	
08/26/10	OKLAHOMA CITY, OK						
	300016459002809003001001400004000001	152520000	6450522110N				
	AML-ticket for Nuttle for NAAML Conference, Scranton, Pa						
	PASSENGER		TICKET #	TRAVEL DATE	LEGS		
	NUTTLE/CHARLES		00179011884413	09/18/10	OKC AA S ORD AA S AVP AA S ORD AA S OKC		
08/24/10	AGNT FEE	89005267245381	55417340237582376338342			\$26.99	
08/26/10	TRAVEL AGENTS, OK						
	300016459002809003001001400004000001	152520000	6450522110N				
	AML-agent fee for trip to NAAML Conference- Scranton, Pa, Nuttle						
	PASSENGER		TICKET #	TRAVEL DATE	LEGS		
	NUTTLE/CHARLES		89005267245381	08/24/10	XAA XD Y XAO		
<b>Transactions Totals</b>						<b>Count: 8</b>	<b>\$2,167.16</b>

	Tran Count	Reported Tax	Net Tran Amt
TRANSACTIONS TOTAL:	8	\$0.00	\$2,167.16
DIVERTED TRANSACTIONS TOTAL:	0	\$0.00	\$0.00
I-PURCHASE TRANSACTIONS TOTAL:	0	\$0.00	\$0.00
<b>GRAND TOTAL</b>	<b>8</b>	<b>\$0.00</b>	<b>\$2,167.16</b>

\* Indicates a disputed transaction.

Posted Billing dynamic date range: Previous Cycledate range: 7/28/2010 to 8/27/2010

## CARDHOLDER STATEMENT (CENTRAL BILL)

Processor, Lvl: 1, Units: CONSERVATION COMMISSION  
 Include Reference Numbers: True, Include POS Codes: False, Include Cards: All, Include Product Types: All, Include States: All,  
 Include Cities: All, Include Account Status: All, Include MCC Groups: All, Include MCC Actions: All  
 Include Original Currency: True, Include Transaction Notes: True, Include Line Item Detail: True, GSA Program: False

**SHERYL GIBSON**

**Account #: \*\*\*\*\*299009**

2800 N LINCOLN BLVD  
 SUITE 160  
 OKLAHOMA CITY, OK 731054201

UNIT: CONSERVATION COMMISSION  
 A/O: STEVEN COFFMAN

--

	Single Purchase	Daily	Cycle	MCC Groups:
<b>Dollar Limits:</b>	\$5,000.00	\$0.00	\$50,000.00	OK64501 Exclude
<b>Volume Limits:</b>		99	999	

--

Tran/Post Date	Merchant & Location Purpose	Allocation Notes/Details	Reference #	Orig Currency Amt/Code/ Conversion	Reported Tax	Transaction Amount
07/29/10	WAL-MART #2804	QPS	05416010210141014548683			(\$50.00)
07/30/10	OKLAHOMA CIT, OK	100016459002808009001001191013000004	6450536130N			
	<i>Educ-credit for returned boxes, purchased too many</i>					
07/29/10	HACH COMPANY	QPS	85506470211700009922936			\$3,257.71
08/02/10	LOVELAND, CO	100016459002808001001001400005000001	6450537190N	664600000		
	<i>WQ-Replacement chemicals for Blue Thumb test kits</i>					
08/06/10	FISHER SCI HUS		05410190218095061108460			\$62.15
08/09/10	800-7667000, TX	100016459002808001001001400005000001	6450537190N	664600000		
	<i>PH BUFFER</i>					
	<i>DESC</i>					
	BUFFER COLORED BLUE		QTY	UNIT COST	UM	EXT AMT
			100.00	\$62.15	EA	\$62.15
08/18/10	GODADDY.COM		75309560230800473899530			\$89.30
08/19/10	480-5058855, AZ	100016459002808014001001205001000004	6450531170N			
	<i>DOMAIN NAME FOR OK. GEOGRAPHIC INFORMATION COUNCIL</i>					
08/17/10	NATIONAL STATE GEOG IN		75122250230003486100219			\$250.00
08/19/10	BEL AIR, MD	100016459002808014001001205001000004	6450531260N			
	<i>MEMBERSHIP DUES</i>					
08/20/10	FISHER SCI HUS		05410190232095201108497			\$53.13
08/23/10	800-7667000, TX	100016459002808001001001400005000001	6450537190N	664600000		
	<i>WHIRL PAK</i>					
	<i>DESC</i>					
	BAGS WHIRL PAK 4 OZ		QTY	UNIT COST	UM	EXT AMT
			100.00	\$53.13	PK	\$53.13



Posted Billing dynamic date range: Previous Cycledate range: 7/28/2010 to 8/27/2010

**SHERYL GIBSON**

**Account #: \*\*\*\*\*299009**

Tran/Post Date	Merchant & Location	Allocation Notes/Details	Reference #	Orig Currency	Reported Tax	Transaction Amount
08/20/10	SOIL / WATER CONSERV S		55458850232207529700031			\$100.00
08/23/10	05152892331, IA					
	100016459002808001001001400005000001	664600000	6450531260N			
	MEMBERSHIP DUES					
08/23/10	SHI CORP		55436870236132368219250			\$760.00
08/24/10	888-7648888, NJ					
	100016459002808011001001400004000001	152520000	6450541130N			
	Software upgrade-Adobe Creative Suite 3-Ireton					
08/26/10	FISHER SCI HUS		05410190238095261108290			\$53.13
08/27/10	800-7667000, TX					
	100016459002808001001001400005000001	664600000	6450537190N			
	WQ-Whirl pak bags for acid storage and water sampling transport					
	DESC					
	BAGS WHIRL PAK 4 OZ					
			QTY	UNIT COST	UM	EXT AMT
			100.00	\$53.13	PK	\$53.13
<b>Transactions Totals</b>			<b>Count: 9</b>			<b>\$4,575.42</b>

	Tran Count	Reported Tax	Net Tran Amt
TRANSACTIONS TOTAL:	9	\$0.00	\$4,575.42
DIVERTED TRANSACTIONS TOTAL:	0	\$0.00	\$0.00
I-PURCHASE TRANSACTIONS TOTAL:	0	\$0.00	\$0.00
<b>GRAND TOTAL</b>	<b>9</b>	<b>\$0.00</b>	<b>\$4,575.42</b>

\* Indicates a disputed transaction.

Posted Billing dynamic date range: Previous Cycledate range: 7/28/2010 to 8/27/2010

## CARDHOLDER STATEMENT (CENTRAL BILL)

Processor, Lvl: 1, Units: CONSERVATION COMMISSION

Include Reference Numbers: True, Include POS Codes: False, Include Cards: All, Include Product Types: All, Include States: All,

Include Cities: All, Include Account Status: All, Include MCC Groups: All, Include MCC Actions: All

Include Original Currency: True, Include Transaction Notes: True, Include Line Item Detail: True, GSA Program: False

**KELLY MOCKABEE**

**Account #: \*\*\*\*\*531655**

2800 N LINCOLN BLVD SUITE 160  
OKLAHOMA CITY, OK 731054201

UNIT: CONSERVATION COMMISSION  
A/O: STEVEN COFFMAN

--

	Single Purchase	Daily	Cycle	MCC Groups:
<b>Dollar Limits:</b>	\$5,000.00	\$0.00	\$25,000.00	OK64501 Exclude
<b>Volume Limits:</b>		99	999	

--

	Tran/Post Merchant & Allocation	Reference #	Orig Currency	Reported	Transaction
	Date Location Notes/Details Purpose		Amt/Code/ Conversion	Tax	Amount
08/03/10	DPS PRINTING SERVICESI	85428320215980000467069			\$1,496.00
08/04/10	EDMOND, OK 100016459002475009001001190013000004 Educ-Project WET workshop materials	6450531150N			
08/04/10	AMAZON MKTPLACE PMTS	55432860216000120580856			\$6.69
08/04/10	AMZN.COM/BILL, WA 100016459002808006001001191012000001 DP-phone charger for Blackberry DESC Retractable Car Charger for BI	6450541230N			
		QTY UNIT COST UM	EXT AMT		
		1.00 \$3.71 PCE	\$3.71		
08/04/10	AMAZON MKTPLACE PMTS	55432860216000124239798			\$31.84
08/04/10	AMZN.COM/BILL, WA 100016459002808006001001191012000001 DP-Blackberry Curve holster pouches DESC Blackberry Curve 8520 Vertical	6450541230N			
		QTY UNIT COST UM	EXT AMT		
		4.00 \$19.92 PCE	\$19.92		
08/03/10	AMAZON MKTPLACE PMTS	55432860215000027242072			\$5.80
08/04/10	AMZN.COM/BILL, WA 100016459002808006001001191012000001 DP-blackberry pouch DESC Blackberry Leather OEM Case Po	6450541230N			
		QTY UNIT COST UM	EXT AMT		
		1.00 \$5.80 PCE	\$5.80		
08/04/10	BATTERIES PLUS 093	25536060217102017605566			\$39.96
08/05/10	OKLAHOMA CITY, OK 100016459002808001001001400005000001 AA batteries	664600000 6450536140N			
08/04/10	STAPLES CONTRACT COMMERC	85450780217118000112377			\$120.75
08/06/10	800-5824774, CO				

Posted Billing dynamic date range: Previous Cycledate range: 7/28/2010 to 8/27/2010

**KELLY MOCKABEE**

**Account #: \*\*\*\*\*531655**

Tran/Post Date	Merchant & Location	Allocation Notes/Details	Reference #	Orig Currency	Reported Tax	Transaction Amount
	calendars & tape					
			\$99.49	100016459002808002001001191011000001		
	DESC	QTY	UNIT COST	UM	EXT AMT	
	TAPE,1",F/LBLMGR 300,BKWE	1.00	\$19.08	EA	\$19.08	
	BOOK,APPT,MO,11X9,BK,2011	8.00	\$85.04	EA	\$85.04	
	CAL,RFL,DSK,12MO,2011	1.00	\$6.91	EA	\$6.91	
	CAL,WALL,12MO,12X12,2011	1.00	\$9.72	EA	\$9.72	
		\$21.26		100016459002808001001001400005000001	664600000	
				6450536140N		
08/11/10	MTM RECOGNITION IN STO		55480770223200279200214			\$32.00
08/12/10	DEL CITY, OK					
	100016459002808002001001191011000001		6450536130N			
	NAME PLATE FOR JIM GREGO					
08/13/10	STAPLES CONTRACT COMMERC		85450780227118000157412			\$166.26
08/16/10	800-5824774, CO					
	100016459002808002001001191011000001		6450536130N			
	STORAGE BOXES					
	DESC	QTY	UNIT COST	UM	EXT AMT	
	FILE,STG,R-KIVE,GN,12/CT	3.00	\$166.26	CT	\$166.26	
08/16/10	STAPLES CONTRACT COMMERC		85450780229118000176667			\$97.00
08/18/10	800-5824774, CO					
	100016459002808006001001191012000001		6450536140N			
	PRINTER INK					
	DESC	QTY	UNIT COST	UM	EXT AMT	
	GCR2077311200 HP NO. 56 BL	1.00	\$23.00	EA	\$23.00	
	GCR2077311515 CTRG,INKJET,	1.00	\$40.00	EA	\$40.00	
	GCR2077311517 CTRG,INKJET,	1.00	\$34.00	EA	\$34.00	
08/17/10	STAPLES CONTRACT COMMERC		85450780230118000196811			\$36.16
08/19/10	800-5824774, CO					
	100016459002808001001001400005000001	664600000	6450536140N			
	VELCRO, BINDER CLIPS, & CALENDAR					
	DESC	QTY	UNIT COST	UM	EXT AMT	
	GAF6156914045 BNDR CLIP,ME	2.00	\$3.20	PK	\$3.20	
	PLNR,ACAD,MNTH,14MO,BK,11	1.00	\$10.31	EA	\$10.31	
	BNDR CLIP,MINI,BLACK,60PK	2.00	\$5.02	PK	\$5.02	
	BINDER,CLIP,MINI,9/16,BK	3.00	\$1.44	DZ	\$1.44	
	VELCRO,ROLL,3/4"X15",WE	1.00	\$16.19	BX	\$16.19	
08/23/10	STAPLES CONTRACT COMMERC		85450780236118000152503			\$18.75
08/25/10	800-5824774, CO					
	100016459002808001001001400005000001	664600000	6450536140N			
	WQ-pens					
	DESC	QTY	UNIT COST	UM	EXT AMT	
	PEN,ERGO,TRI GRIP,BLK INK	1.00	\$6.25	DZ	\$6.25	
	PEN,ERGO,TRI GRIP,BLU INK	1.00	\$6.25	DZ	\$6.25	
	PEN,ERGO,TRI GRIP,RED INK	1.00	\$6.25	DZ	\$6.25	
08/26/10	USI ED GOV		55432860238000779248460			\$349.89
08/27/10	800-243-4565, CT					
	100016459002808002001001191011000001		6450536140N			
	Foam board and laminating film					
<b>Transactions Totals</b>			<b>Count: 12</b>	<b>\$2,401.10</b>		

Posted Billing dynamic date range: Previous Cycledate range: 7/28/2010 to 8/27/2010

**KELLY MOCKABEE****Account #: \*\*\*\*\*531655**

	<i>Tran Count</i>	<i>Reported Tax</i>	<i>Net Tran Amt</i>
TRANSACTIONS TOTAL:	12	\$0.00	\$2,401.10
DIVERTED TRANSACTIONS TOTAL:	0	\$0.00	\$0.00
I-PURCHASE TRANSACTIONS TOTAL:	0	\$0.00	\$0.00
<b>GRAND TOTAL</b>	<b>12</b>	<b>\$0.00</b>	<b>\$2,401.10</b>

*\* Indicates a disputed transaction.*

**OKLAHOMA CONSERVATION COMMISSION**  
**FY-2011 FINANCIAL STATEMENT**  
**September 22, 2010**

	<u>FUND</u>	<u>ACCOUNT</u>	<u>ALLOCATION</u>	<u>EXPENDITURE</u>	<u>ENCUMBRANCE</u>	<u>BALANCE</u>	<u>CASH</u>
<b><u>ADMINISTRATION</u></b>							
	19101	11	\$2,954,520.00	\$730,398.86	\$1,778,241.39	\$445,879.75	
<b><u>WATERSHED PLANNING</u></b>							
	19101	20	\$590,000.00	\$128,727.04	\$66,901.82	\$394,371.14	
<b><u>FIELD SERVICE</u></b>							
	19101	30	\$6,300,914.00	\$1,332,303.26	\$1,993,825.36	\$2,974,785.38	
<b>TOTAL STATE FUNDS</b>							
	19101		\$9,845,434.00	\$2,191,429.16	\$3,838,968.57	\$3,815,036.27	
<b><u>REVOLVING FUNDS</u></b>							
	Small Watershed - 11	20000 / 20	\$25,000.00	\$0.00	\$0.00	\$25,000.00	\$22,236.27
	GIS Fund - 11	20500 / 10	\$50,000.00	\$339.30	\$660.70	\$49,000.00	\$30,723.27
	OCC Infrastructure / Rehab / 10	21500 / 20	\$4,758,089.00	\$1,344,548.83	\$421,012.07	\$2,992,528.10	
	OCC Infrastructure / Rehab / 11	21500 / 20	\$3,051,535.00	\$226,034.29	\$2,539,286.63	\$286,214.08	\$3,246,513.52
	Carbon Sequestration / 11	220 / 50					\$2,100.00
	Donation Fund / Admin / 11	24500 / 10	\$75,000.00	\$0.00	\$100.00	\$74,900.00	\$12,763.80
	Donation Fund / Field Service / 11	24500 / 30	\$3,000.00	\$0.00	\$0.00	\$3,000.00	\$11,985.35
	Donation Fund / AML / 10	24500 / 40	\$25,000.00	\$0.00	\$0.00	\$25,000.00	\$41,201.01
	Donation Fund / WQ / 11	24500 / 50	\$100,000.00	\$0.00	\$0.00	\$100,000.00	\$108,419.83
	OCC Infrastructure / O & M / 11	25000 / 20	\$300,000.00	\$0.00	\$0.00	\$300,000.00	
	OCC Infrastructure / F Serv / 11	25000 / 30	\$788,310.00	\$0.00	\$0.00	\$788,310.00	
	OCC Infrastructure / Cshare / 10	25000 / 50	\$1,879,391.00	\$1,867,021.64	\$7,319.50	\$5,049.86	
	OCC Infrastructure / Cshare / 11	25000 / 50	\$1,710,000.00	\$259,713.59	\$44,573.93	\$1,405,712.48	\$1,795,363.46
<b><u>FEDERAL FUNDS</u></b>							
	40000 / 10		\$25,902,246.00	\$10,572,116.27	\$2,065,662.23	\$13,264,467.50	
	40000 / 11		\$27,432,832.00	\$2,011,730.37	\$11,488,643.52	\$13,932,458.11	\$1,146,889.41
	Tar Creek - 41000 / 10		\$32,900.00	\$26,444.66	\$0.00	\$6,455.34	
	Tar Creek - 41000 / 11		\$25,000.00	\$0.00	\$20.00	\$24,980.00	\$23,549.65
	Sugar Creek - 41500 / 10		\$2,700,000.00	\$191,828.57	\$10.01	\$2,508,161.42	
	Sugar Creek - 41500 / 11		\$2,130,000.00	\$19,362.13	\$13,184.42	\$2,097,453.45	\$3,744,581.65
	ARRA / Watershed / 49000 / 10	20	\$14,625,000.00	\$475,050.74	\$142,827.91	\$14,007,121.35	
	ARRA / Watershed / 49000 / 11	20	\$7,400,000.00	\$98,617.63	\$1,664,551.15	\$5,636,831.22	
	ARRA / Field Services / 49000 / 10	30	\$100,000.00	\$95,000.00	\$0.00	\$5,000.00	
	ARRA / Field Services / 49000 / 11	30	\$60,000.00	\$0.00	\$0.00	\$60,000.00	
	ARRA / Water Quality / 49000 / 10	50	\$2,000,000.00	\$284,881.50	\$606,587.37	\$1,108,531.13	
	ARRA / Water Quality / 49000 / 11	50	\$2,560,000.00	\$9,502.84	\$2,496,284.68	\$54,212.48	
<b>TOTAL ARRA FUNDS</b>							
	49000 / 10		\$16,725,000.00	\$854,932.24	\$749,415.28	\$15,120,652.48	\$1,403,627.01
	49000 / 11		\$10,020,000.00	\$108,120.47	\$4,160,835.83	\$5,751,043.70	

Oklahoma Conservation Commission  
Summary of Bond Program  
as of 9/21/2010

<b>DEPARTMENT CODE</b>	<b>NAME</b>	<b>BOND AMOUNT</b>	<b>TOTAL EXPENITURES</b>	<b>ENDING BALANCE</b>
9909001	Rehabilitation of Dams	8,800,000.00	1,267.44	8,798,732.56
9909003	Repair of Dams	7,100,000.00	1,917,762.12	5,182,237.88
9909004	Kingfisher Flood Protection	4,000,000.00	138,494.35	3,861,505.65
9909002	Sugar Creek FEMA and CREP Support	3,000,000.00	-	3,000,000.00
9909005	Conservation Cost Share	2,100,000.00	880,466.85	1,219,533.15
	Total	<u>25,000,000.00</u>	<u>2,937,990.76</u>	<u>22,062,009.24</u>

# OCC AGREEMENTS FOR CONSIDERATION

OCC PARTY ID	NO	PURPOSE	AMENDMENT PURPOSE	BEGIN DATE	END DATE	AMOUNT TO OCC	AMOUNT FROM OCC	FUNDING SOURCE
a	NRCS	68-7335-10-16	Assist with delivery of Farm Bill.	Amendment 1 - adds \$95,000 to Part A	7/1/2010	6/30/2011	\$500,089.00	NRCS
b	NRCS	68-7335-0-14	to obtain technical assistance that will assist NRCS with the construction inspection of Sallisaw Creek Site 18M funded through ARRA. The project is currently under construction.	Amendment 1 - increase agreement by \$72,300.	6/7/2010	9/30/2011	\$132,300.00	NRCS/ARRA
c	NRCS	68-7335-0-17	inspection services for Cottonwood 15 Watershed rehabilitation project	Amendment 1 - increases agreement by \$18,800	7/1/2010	9/30/2011	\$410,600.00	NRCS/ARRA
d	NRCS	68-7335-0-19	inspection services for Upper Clear Boggy 34 Watershed rehabilitation project	Amendment 1 - increases agreement by \$17,000	7/1/2010	9/30/2011	\$478,200.00	NRCS/ARRA
e(1) *(2)	NRCS	68-7335-0-21	inspection services for Sugar Creek L-44 Watershed rehabilitation project	e(2)- *Amendment 2 - increases agreement by \$70,000 (\$749,400)	7/1/2010	9/30/2011	\$749,400.00	NRCS/ARRA

\* added after meeting packets were mailed.

OCC PARTY ID	NO	PURPOSE	AMENDMENT PURPOSE	BEGIN DATE	END DATE	AMOUNT TO OCC	AMOUNT FROM OCC	FUNDING SOURCE
e(1) *(2) NRCS	68-7335-0-21	inspection services for Sugar Creek L-44 Watershed rehabilitation project	e(1)-Amendment 1 - Increases agreement by \$19,900 (\$679,400).	7/1/2010	9/30/2011	\$749,400.00		NRCS/ARRA
f Oklahoma State University	08-146	improving and maximizing nitrogen use efficiency	Amendment 1 - extend agreement to May 31, 2011 with minor workplan revision	8/1/2008	5/31/2011		\$133,000.00	EPA
g NRCS	68-7335-9-28	for the Commission to manage the construction to repair the Keechai drop structure in the Sugar Creek watershed in Caddo County.	Amendment 2 - extends agreement to 9/30/11	6/12/2009	9/30/2011	\$175,000.00		NRCS/ARRA
h NRCS	68-7335-9-29	for the Commission to manage the construction contract(s) to repair the Uncle John 5 seep and the Bear Fall Coon 6 seep.	Amendment 2 - extends agreement to 9/30/11	6/12/2009	9/30/2011	\$75,000.00		ARRA/NRCS
i Oklahoma State University	CIG-OSU	to collect and analyze soil samples from NRCS CIG/WFEC project areas and to develop a hand soil sampling protocol for use by carbon offset verifiers		9/17/2010	9/17/2013		\$137,500.00	CIG

\* added after meeting packets were mailed.



OCC PARTY ID	NO	PURPOSE	AMENDMENT PURPOSE	BEGIN DATE	END DATE	AMOUNT TO OCC	AMOUNT FROM OCC	FUNDING SOURCE
j	CDs in CIG/WFEC Project Area	to provide carbon offset verification and be compensated at an hourly rate and for mileage.		9/17/2010	9/17/2013		\$39,000.00	OACD/CIG
k	Oklahoma Association of Conservation Districts	to provide outreach to producers in CIG/WFEC project areas by holding informational meetings/workshops about the environmental and economic advantages of conservation management practices and benefits of participating in the project.		9/17/2010	9/17/2013		\$75,000.00	CIG
l	*Bryan CD	to implement conservation practices to restore vegetation on flood plain easements.		10/4/2010	9/30/2011		\$79,000.00	NRCS/ARRA
m	*Cotton County CD	to implement conservation practices to restore vegetation on flood plain easements.		10/4/2010	9/30/2011		\$31,300.00	NRCS/ARRA
n	*Jefferson County CD	to implement conservation practices to restore vegetation on flood plain easements.		10/4/2010	9/30/2011		\$73,602.00	NRCS/ARRA

\* added after meeting packets were mailed.

# OUT OF STATE TRAVEL REQUESTS

OCC ID	DATES	SPONSOR	NAME OF MEETING	LOCATION	ATTENDANCE	EST COST	FUNDING SOURCE
a	October 4-5, 2010	Agricultural GHG Mitigation Initiatives	(1) Joint C-AGG meeting	Chicago, IL	Hansen	\$1,500.00	EPA cost includes meeting (b)
b	October 6, 2010	Climate Action Reserve	Ag Protocols Scoping Meeting	Chicago, IL	Hansen		EPA included in cost of meeting (a)
c	December 6-9, 2010	Gordon and Betty Moore Foundation, USDA, USGS, EPA	A Community on Ecosystem Services	Chandler, AZ	Hansen	\$1,500.00	EPA

# Oklahoma Conservation Commission

## Strategic Plan for Fiscal Years 2011 – 2016



2800 N Lincoln Blvd Ste 160  
Oklahoma City OK 73105  
(405) 521-2384  
[www.conservation.ok.gov](http://www.conservation.ok.gov)

October 1, 2010

## Executive Summary

Life on earth is supported by three basic resources: soil, water and air. How well we live tomorrow rests upon how carefully we manage and use these natural resources today. The Oklahoma Conservation Commission is charged with administering programs and services that conserve, protect and restore two of the three -- soil and water. The Conservation Commission administers its programs and services through Oklahoma's 87 local conservation districts. Coupled with USDA's Natural Resources Conservation Service, the Commission and Conservation Districts form Oklahoma's Conservation Partnership, an environmental protection program delivery system as effective today as it was in the days following the Dust Bowl. Land conservation, flood prevention, restoration and protection of water quality, preservation of working farms and ranches, wildlife protection and enhancement of stream riparian corridors are outcomes of the Conservation Commission's strategic plan. These outcomes will improve the quality of life for current and future generations.

This strategic plan represents an efficient and effective plan that is sensitive to current needs, existing trends and anticipated conditions. The two goals of the Oklahoma Conservation Commission's strategic plan --- advancing natural resource stewardship and strengthening Oklahoma's grassroots natural resources conservation delivery system --- build upon one other. To advance the stewardship of Oklahoma's natural resources in a tough economic climate, we must maintain the strength of conservation districts and the Commission by increasing efficiency, sharing resources and streamlining operations. Maintaining critical agency functions through the current fiscal downturn is vital, so that this agency, with help from our partners, will continue to advance the conservation of the state's soil and water resources.

Renewable productivity of the state's working lands, and thus the assurance of a dependable and plentiful food supply are visibly enhanced with conservation cost share. Clean water, necessary for personal wellbeing, industry and future economic growth, is promoted and protected through priority watershed programs. Flood damage to both urban and rural infrastructure is demonstrably reduced through maintenance and rehabilitation of Oklahoma's 2,100 upstream flood control dams. Reclaiming the eyesores of damaged land, whether in the Tar Creek Superfund Area or as a result of unenlightened past mining methods, will make this state more livable. These areas of environmental protection work hand in hand with the Governor's natural resources goals and are the heart and soul of the Conservation Commission's mission "to conserve, protect and restore Oklahoma's natural resources working in collaboration with conservation districts and other partners, on behalf of the citizens of Oklahoma."

The accomplishment of the agency's mission occurs within the context of several business environment considerations that were assessed through the strategic planning process. While the state's economy has been severely impacted by the national recession, it is generally relatively stable because of its unique dependence on the combination of oil, manufacturing and agriculture. However, for the present, the agency and districts must adjust to a nearly 20 percent decline in general revenue appropriations with additional cuts possible in FY 2012. In addition, the agriculture economy is notably volatile, making farmer and rancher participation in soil and water conservation variable. Notably, there are increasing pressures to regulate nonpoint source pollution of surface and ground water with the potential to add additional financial burdens to

agriculture producers. It is also important to note the lopsided investment of monies to address point source pollution compared to nonpoint source pollution. In excess of \$500 million of public funds have been spent in Oklahoma since 1972 to improve point source water treatment facilities. Similar investments must be made to successfully address nonpoint source pollution and ensure high quality water for our citizens.

The Commission's historic customer and support base has been rural and agricultural Oklahoma. Future indications are that population will continue to shift away from rural Oklahoma. Full time farmers and ranchers are becoming fewer. At the same time, the number of part time farmers and ranchers is increasing. Population shifts and trends in turn affect the composition of our customer base. The conservation districts' and the Commission's methods of marketing programs and services must evolve to meet this growing trend. The message of land conservation, flood prevention, preserving water quality, preservation of working farms and ranches, protecting wildlife and enhancing natural areas are significant to both rural and urban Oklahoma.

The most noticeable business trend within the conservation community is the steady decline in the number of employees within the USDA Natural Resources Conservation Service workforce, coupled now with a similar decline of employee numbers in conservation districts and the Commission. Historically, the Commission and conservation districts have been dependent on NRCS technical expertise in a variety of areas. Over the past decade the Commission and districts have developed limited technical expertise. While our fundamental mission of delivering technical, financial, and educational assistance to private landowners remains the same, by whom and how those services are delivered has become more complicated. The need for additional technical ability from districts and the Commission will continue to grow.

Many state and federal agencies with responsibilities for natural resources compete for the same financial and human resources. However, the same agencies that we often view as our competitors, the Oklahoma Water Resources Board, Department of Environmental Quality, Department of Agriculture, Food and Forestry and Department of Mines are also our partners. The Conservation Commission's overriding goal is to improve Oklahoma's renewable natural resources; therefore we choose to work collaboratively with sister agencies and other partners in order to maximize efficiency and effectiveness.

The current production and internal environment at the Oklahoma Conservation Commission is one of an agency with a programmatic "can do" attitude. At the same time the agency recognizes the reality of limited human and financial resources. We have enjoyed success in developing and implementing new and innovative programs to address critical resource needs while still maintaining important traditional program functions. The strategic planning process has helped us identify structural changes needed to better address and focus the agency's attention to accomplishing our mission. It has also helped identify those areas needing a more prolonged period of study before further adjustments are made.

Two fundamental challenges will face this agency and her partners in the next five years: How do we ensure the continued benefits of flood protection from 2,100 aging dams and how do we continue to delivery conservation at a record pace all in the face of declining revenue to support the people delivering the dollars? Last year the Commission and its partners delivered \$40 million state and over \$100 million USDA funds for conservation. OSU analysis indicates conservation dollars multiply local economic activity at least 1.5 times. Dams must be

properly maintained so that the flood prevention benefits provided don't turn into threats to life and property. It is unreasonable to pass up federal dollars offered at the rate of two dollars for every state dollar in order to rebuild and rehabilitate dams turned high hazard by unrestrained housing development below the dam. Nor does it make sense to miss out on 4:1 federal to state funding to restore riparian buffers that in turn protect the quality of Oklahoma stream water.

This document outlines our best ongoing thoughts to assure conservation does not slip into the twilight under the current financial stress; that instead, it will continue as a viable conduit for the wellbeing of all Oklahomans, present and future. We stand with the same resolve as past conservationists, meeting challenges and overcoming, making the difficult choices so that the worthy mission, "Conserving, Protecting and Restoring Oklahoma's Natural Resources working in collaboration with the Conservation Districts and other Partners, on behalf of the citizens of Oklahoma" remains effective and functional.

My sincere appreciation goes to the Commissioners who govern this agency, the dedicated men and women in Conservation Districts, the Commission and NRCS. These are the people whose hard work, stewardship ethic and bold initiative enable Oklahoma to set the conservation standard for the nation.

Mike Thralls  
Executive Director  
Oklahoma Conservation Commission

# OCC Strategic Plan

## Table of Contents

<b>I. Executive Summary .....</b>	<b>ii</b>
<b>II. Introduction .....</b>	<b>1</b>
<b>III. Mission and Vision Statement .....</b>	<b>2</b>
<b>IV. Values and Behaviors .....</b>	<b>3</b>
<b>V. Long Term Goals .....</b>	<b>4</b>
<b>VI. Agency Key Performance Measures and Agency Wide Action Plans .....</b>	<b>4</b>
Goal 1.....	4
Goal 2.....	10
<b>VII. Business Environment Assessment .....</b>	<b>15</b>
<b>VIII. Financial Performance .....</b>	<b>19</b>

This publication is issued by the Oklahoma Conservation Commission as authorized by Mike Thralls, Executive Director. Copies have not been printed but are available through the agency website. Two printout copies have been deposited with the Publications Clearinghouse of the Oklahoma State Department of Libraries.

# Introduction

Pursuant to Section 45.3 of Title 62, the Conservation Commission prepared an updated strategic plan for FY-2011 through FY-2016 per the Office of State Finance (OSF) instructions.

The Conservation Commission provides its services and programs through a delivery system that involves 62 agency employees, 87 local conservation district offices (subdivisions of state government), 435 conservation district directors, 160 local conservation district employees and over 300 employees of USDA's Natural Resources Conservation Service. This strategic plan update takes into account this unique partnership for delivering conservation programs and services.

Our goals, performance measures and action plans are focused on improving the efficiency and effectiveness of our agency and strengthening our commitment to improving the quality of life of Oklahomans.



## **Mission Statement**

**The mission of the Oklahoma Conservation Commission (OCC) is to conserve, protect and restore Oklahoma's natural resources working in collaboration with the Conservation Districts and other Partners, on behalf of the citizens of Oklahoma.**

The OCC will fulfill its mission by providing:

- Tools, training and support
- Finances, legal assistance and information, technical expertise, programs, data, policies, rules, criteria, training, equipment, and people
- Leadership;
- Guidance, priorities, direction, goals and objectives, voice, accountability, coordination, feedback and dialogue
- Planning and assessment
- Public information
- Protection: human health and safety, abandoned mine lands (AML) safety, water quality (WQ), flooding, soils, wildlife, environment
- Restoration
- Education
- Liaison services between federal and state agencies and conservation districts

The OCC will fulfill its mission on behalf of the following:

- Citizens of Oklahoma
- Conservation Districts
- OCC Staff and Commissioners
- Local, State and Federal Agencies
- State Legislature
- General Public
- Private Organizations
- Flora and Fauna
- Educational Institutions
- Congress
- Tribes

## **VISION STATEMENT**

***Responsible care for Oklahoma's natural resources.***

# Values and Behaviors

## Rules of Conduct

Personal accountability and responsibility are two core values that are seen as critical for the employees as well as the governing body of the Oklahoma Conservation Commission. Those characteristics serve as the basis for the strength of our Agency. These values, coupled with integrity, give rise to the type of behavior we desire in our business environment. The values and behaviors that are important to an organization must start on a personal, individual level for each member of the organization. When the conduct of our employees in our daily operations adheres to these values we project the image we all desire ...that of an efficient professional organization which values its human resources, demands excellence and can stand on its reputation, track record and work product at every level.

We expect our employees as well as our governing body to function with loyalty to our mission as well as reflect the leadership necessary for its success. Our staff will support leadership and our governing body by providing honest, accurate and timely information based on best professional judgment and delivered with respect and courtesy. We will strive to maintain positive, productive, professional relationships even at times when we agree to disagree.

Our staff will treat coworkers and clients with courtesy and respect. Our staff will make timeliness, communication, and quality of work products a priority. We acknowledge a wide spread workforce with varying levels of intensity in daily supervision. We acknowledge the increase in program responsibilities that have preceded and exceeded an appropriate increase in human resources. Based on the core values and behaviors mentioned above we will focus our efforts and look within our resources for creative strategies to manage human and financial resources to reach our objectives. In the face of adversity we will remember those core values and rules of conduct which will enable us to weather the storm and remain true to our mission.

Effective incorporation of these core values will create an agency image counter to the negative image sometimes attributed to state government and the bureaucracy. Such a positive image by a state agency that honors responsibility, accountability, honesty and effective communication will enhance the ability to accomplish our mission.

## Long-term Goals

1. Advance the stewardship of Oklahoma's natural resources to improve the quality of life for current and future generations.
  2. Strengthen Oklahoma's grass roots natural resources conservation delivery system by increasing efficiency, sharing resources and streamlining operations over the next 5 years.
- 

### OCC Key Performance Measures And Agency Wide Action Plans

**Goal 1: Advance the stewardship of Oklahoma's natural resources to improve the quality of life for current and future generations.**

#### **KPM 1: Soil Quality**

Description: Sustain or improve soil quality by increasing and diversifying the number of participants implementing best management practices through the state locally led cost share program.

Unit of Measure: # of participants – 700/yr

	Actual		Budget		Estimated
FY – 2009	787	FY – 2011	900	FY – 2012	900
FY – 2010	859				

Agency-wide Action Plans	FY 2011	FY 2012	FY 2013	FY 2014	FY 2015	FY 2016
Provide at least \$1 million each year in state appropriated funding for the state Locally Led Cost Share Program.	X	X	X	X	X	X
Administer the LLCSP in a user-friendly, efficient and effective manner that encourages district participation. Rules – Guidelines – Training – Assistance	X	X	X	X	X	X
Collaborate with NRCS to provide technical assistance and training to CD's for certifying design and implementation of conservation practices according to NRCS standards and specification.	X	X	X	X	X	X
Collaborate with NRCS, ARS, and OSU to identify criteria and develop process for measuring soil quality.	X	X	X			

## KPM 2: Water Quality

Description: The OCC will reduce NPS loading to streams and rivers statewide:  
Units of Measure: Stream segment/Waterbody pairs removed from the 303(d) list for nonpoint source-related causes and published in EPA accepted success summaries

	Actual		Budget		Estimated
FY – 2009	4 successes	FY – 2010	5 successes	FY – 2011	5 successes
				FY – 2012	5 successes
				FY – 2013	5 successes

Agency-wide Action Plans	FY 2011	FY 2012	FY 2013	FY 2014	FY 2015	FY 2016
Monitor water quality, habitat, and biology in at least 250 streams in the State during a five year period through a rotating program.	X	X	X	X	X	X
Estimate Annual NPS pollutant (sediment, nitrogen and phosphorus) loading reductions to Oklahoma waterbodies for reporting in the EPA Grants Reporting and Tracking System	X	X	X	X	X	X
Implement, demonstrate, and educate to remedy water quality problems associated with NPS pollution in watersheds each year, depending on resources and current needs in the priority watersheds.	X	X	X	X	X	X

Provide training for watershed coordinators and advisory group members on current methods and technologies in watershed management through seminars, symposiums, and various other training sessions.	X	X	X	X	X	X
Follow-up monitor and evaluate performance of each implementation project.	X	X	X	X	X	X
Continue to coordinate the State of Oklahoma's NPS Working Group to advise and assist in planning NPS programs to control NPS pollution through 2015.	X	X	X	X	X	X
The NPS Program will contribute to federally mandated State planning requirements including NPS components to UWA, 303(d) list, EQIP planning.	X	X	X	X	X	X
The NPS Program will contribute to and assist with the Oklahoma Water Resources Board's development of biological criteria, nutrient criteria and sediment criteria as related to water quality standards.	X	X	X	X	X	X
The NPS program will include NPS watershed planning and technical assistance to conservation districts and other entities.	X	X	X	X	X	X
Coordinate and conduct training programs, sample collection, and quality assurance activities for Blue Thumb volunteers involved in sampling stream and ground waters of the State.	X	X	X	X	X	X
Provide educational tools and technical assistance to volunteers and the conservation districts in which programs exist in order to increase the effectiveness of Blue Thumb activities in these districts.	X	X	X	X	X	X
Continually seek new volunteers as well as new partners to support Blue Thumb programs in additional Conservation Districts throughout the State.	X	X	X	X	X	X
Collaborate with NRCS, OSU, and other partners to promote initiatives which protect water quality and improve soil quality by sequestering carbon in the soil column	X	X	X	X	X	X

### KPM 3: Wetlands

Description: The OCC will promote a net gain of wetlands in Oklahoma.

Unit of Measure: Net wetland acres gained

	Actual		Budget		Estimated
FY – 2009	200	FY – 2010	200	FY – 2011	200
				FY – 2012	200
				FY – 2013	200

Agency-wide Action Plans	FY 2011	FY 2012	FY 2013	FY 2014	FY 2015	FY 2016
Coordinate the state wetlands working group to facilitate a cooperative working effort amongst agencies, bring additional resources to bear on wetlands conservation efforts, and provide an opportunity for information exchange in an effort to develop the State’s Wetlands Program consistent with EPA’s guidance including wetlands monitoring, measurement of gains and losses, etc.	X	X	X	X	X	X
Increase wetland restoration efforts through landowner education and implementation projects.	X	X	X	X	X	X
Provide common sense wetlands information and technical assistance to conservation districts and Oklahoma citizens.	X	X	X	X	X	X

### KPM 4: Reduce Flooding

Description: The potential for flooding will be reduced by operating, maintaining or rehabilitating the 2,107 small watershed flood control structures throughout the state.

Unit of Measure: # of structures – 2,107/year

	Actual		Budget		Estimated
		FY – 2009	2,105	FY – 2010	2,105
				FY – 2011	2,107
				FY – 2012	2,107

<b>Agency-wide Action Plans</b>	<b>FY 2011</b>	<b>FY 2012</b>	<b>FY 2013</b>	<b>FY 2014</b>	<b>FY 2015</b>	<b>FY 2016</b>
Assist 15 CD's per year with the rehabilitation process.	X	X	X	X	X	X
Develop system, processes and tools for engaging and assisting CD's with rehabilitation projects. Education – Assistance – Public Affairs media packet – Gov't. Affairs strategy	X	X	X	X	X	X
Conduct two (2) Rehabilitation Program seminars per year for CD's.	X	X	X	X	X	X
Conduct O&M workshops at least every third year for CD's.	X	X	X	X	X	X
Provide at least \$1.2 million in state appropriated funds for the 35% local sponsor cost share required for the federal Watershed Rehabilitation Program.	X	X	X	X	X	X
Provide at least \$750,000 in state appropriated funds to CD's for O&M.	X	X	X	X	X	X
Provide technical assistance with operations and maintenance (O&M) to the 68 CD's with structures.	X	X	X	X	X	X

### **KPM 5: Reclaim Scarred Lands**

Description: OCC, working with conservation districts and other units of government, will reclaim abandoned mine sites that are hazardous to the public and/or degrading the environment.

Unit of Measure: # of projects and acres reclaimed

	<b>Actual</b>		<b>Budget</b>		<b>Estimated</b>
FY – 2009	3 – 180	FY – 2011	4 – 114	FY – 2012	3 – 165
FY – 2010	3 – 541			FY – 2013	4 – 150
				FY – 2014	4 – 150

Agency-wide Action Plans	FY 2011	FY 2012	FY 20013	FY 2014	FY 20115	FY 2016
Administer between \$1.75 to \$5 million each year in the Federally funded abandoned mine land (AML) reclamation programs.	X	X	X	X	X	X
Collaborate with the Office of Surface Mining, U.S. Army Corps of Engineers, and other state and federal agencies in the oversight of the reclamation programs.	X	X	X	X	X	X
Design reclamation projects utilizing both the Oklahoma Conservation Commission staff and the private sector.	X	X	X	X	X	X
Permits approved by the Department of Environmental Quality	X	X	X	X	X	X
Respond to all AML emergencies within 24 hours of notification that a potential emergency exists.	X	X	X	X	X	X
Using the most cost effective methods, provide temporary and permanent vegetation on completed reclamation projects utilizing conservation districts and/or the private sector.	X	X	X	X	X	X
Field investigation of potential AML projects in Rogers, Tulsa, and Wagoner Counties.			X			
Field investigation of potential AML projects.				X	X	X

### KPM 6: Conservation Education

Description: Increase the knowledge and awareness of Oklahoma's natural resources and improve the natural resource decision making process of Oklahoma's citizens through conservation education efforts.

Unit of Measure: # of clients reached – 65,000/yr

	Actual		Budget		Estimated
FY – 2009	67,146	FY – 2011	65,000	FY – 2011	65,000
FY – 2010	61,270				



Agency-wide Action Plans	FY 2011	FY 2012	FY 2013	FY 2014	FY 2015	FY 2016
Coordinate conservation education activities among OCC's divisions to eliminate duplication of effort and increase cooperation, coordination and networking among divisions.	X	X	X	X	X	X
Coordinate conservation education activities among state agencies as mandated in Title 27A-Section 1-3-101(F)(8) in order to eliminate duplication of effort and increase cooperation, coordination and networking among agencies.	X	X	X	X	X	X
Coordinate and conduct training programs for formal and non-formal educators on the soil, water and wetland resources in the state.	X	X	X	X	X	X
Provide educational tools and technical assistance to conservation districts in order to increase the effectiveness of district education efforts.	X	X	X	X	X	X

**Goal 2: Strengthen Oklahoma's grass roots natural resources conservation delivery system by increasing efficiency, sharing resources and streamlining operations over the next 5 years.**

**KPM 1: Organizational Development**

Description: Identify, better utilize and pursue the human and financial resources needed to improve the efficiency and effectiveness of conservation districts and the agency.

Unit of Measure: Percent (%) of Strategic Plan actions accomplished / year.

	Actual		Budget		Estimated
FY – 2009		FY – 2011	90%	FY – 2012	92%
FY – 2010				FY – 2013	93%
				FY – 2014	94%
				FY – 2015	95%
				FY – 2016	95%

Agency-wide Action Plans	FY 2011	FY 2012	FY 2013	FY 2014	FY 2015	FY 2016
Implement study to explore pros/cons of district employees becoming state employees.	X	X	X	X	X	X
Provide training and professional development opportunities to increase employee retention rates in conservation districts and the Commission.	X	X	X	X	X	X
Increase the training and leadership development opportunities available to district directors.	X	X	X	X	X	X
Increase diversity of conservation district boards by identifying and implementing improved methods of recruitment.	X	X	X	X	X	X
Improve financial management capabilities of conservation districts through mandatory training of district directors and employees.	X	X	X	X	X	X
Utilize strategic planning in the day to day operations of the agency. Review performance and make revisions as agency tasks are completed and/or agency responsibilities change.	X	X	X	X	X	X
Develop and/or improve the resources available to employees. These resources to include personnel handbook, affirmative action, employee performance evaluation, and technology.	X	X	X	X	X	X
Strengthen the existing workforce by engaging leadership development, professional development, participation in professional organizations, continued training and cross training within the agency and conservation districts.	X	X	X	X	X	X
Improve and address the workplace environment as needs and responsibilities change.	X	X	X	X	X	X
Work with legislature to identify and update Oklahoma Statutes that have an effect on OCC and conservation districts by removing agency statutory responsibilities to administer unfunded mandates.	X	X	X	X	X	X

## KPM 2: Communications

Description: Improve communications with the general public, conservation districts and commission staff.

Unit of Measure: Number of People Reached

Actual	Budget	Estimated
FY – 2009	750,000	FY – 2010
		FY – 2011
		FY – 2012

Agency-wide Action Plans	FY 2011	FY 2012	FY 2013	FY 2014	FY 2015	FY 2016
Facilitate the production of opinion/editorials on conservation and distribute them to state newspapers	X	X	X	X	X	X
Produce news releases on conservation activities and projects for use by conservation districts with their local newspapers and produce monthly agency newsletter to facilitate communication with districts, district directors and interested public.	X	X	X	X	X	X
Continually improve the agency's web site by adding current news features on conservation projects and activities.	X	X	X	X	X	X
Collaborate with tribal groups and participate in tribal conferences to disseminate information about conservation programs, services and resources.	X	X	X	X	X	X
Continually improve e-mail communications with conservation districts by upgrading computer hardware and software and providing training for employees.	X	X	X	X	X	X
Improve communication between the Commission and districts by increasing Commission staff presence at district board meetings and district functions.	X	X	X	X	X	X

Improve internal communications among staff by holding monthly principal staff meetings, quarterly full staff meetings, division field days, conducting joint division staff meetings, and continually upgrading the agency e-mail system.	X	X	X	X	X	X
Maintain open communications with principal conservation partners (NRCS and OACD) through a monthly teleconference and through formal and informal discussions and meetings between management teams.	X	X	X	X	X	X

### KPM 3: Partnerships

Description: Enhance and expand partnerships with federal, state, local and private entities.

Unit of measure: Dollars

Success will be measured by the amount of new dollars, human resources, equipment and technology that are contributed by existing and new partners for use by the Commission and conservation districts in advancing our mission.

	Actual		Budget		Estimated
FY – 2009		FY – 2011	\$6 million	FY – 2012	\$6 million
FY – 2010				FY – 2013	\$6 million
				FY – 2014	\$6 million
				FY – 2015	\$6 million
				FY – 2016	\$6 million

Agency-wide Action Plans	FY 2011	FY 2012	FY 2013	FY 2014	FY 2015	FY 2016
Aggressively work with key federal partners (NRCS, EPA and OSM) to maximize federal conservation funds coming to the state and seek out other federal partners (e.g. tribes and USFWS) to identify and secure new federal conservation funds.	X	X	X	X	X	X
Actively participate in state efforts to reduce duplication and improve efficiency. Maintain a presence in the following groups: Environmental Education	X	X	X	X	X	X

Coordinating Committee, the Geographic Information Systems Council, the Non-point Source Working Group, the Wetlands Working Group, and the State Water Quality Monitoring Council.						
Explore ways of partnering with and accessing local governmental resources including county commissioners, municipal governments, conservancy districts and school districts.	X	X	X	X	X	X
Explore ways of partnering with and accessing resources from businesses, non-profits, and associations.	X	X	X	X	X	X
Pursue funding opportunities with new and existing partners both public and private.	X	X	X	X	X	X
Develop strategy to upgrade conservation district equipment.	X	X	X	X	X	X

# **Business Environment Assessment**

There are eight dimensions of the business environment within which the Oklahoma Conservation Commission functions that were assessed by the agency. Each is described below.

## **Economy**

The state's economy over the past two years has taken a significant downturn mirroring the economic recession in the nation. Consequently, state tax revenue has declined resulting in reduced general revenue appropriations to the agency. For the past two fiscal years agency management has made cuts in operations and personnel. Fortunately the negative impacts have been buffered by an increase in federal program funds coming to the Commission. For example, the Commission is currently managing over 20 million dollars of federal funds from the American Recovery and Reinvestment Act of 2009. While these and other federal program funds have helped to make up for a portion of lost state appropriations, they will not be available in future years. Without a major recovery of the state economy and increased state tax revenue and appropriations to pre-recession levels, the agency will be forced to make significant budget cuts during the period covered by this strategic plan.

The most critical sector of the state's economy that impacts the Commission is agriculture. The Commission and Conservation Districts' primary customer group is farmers and ranchers. Their ability to participate in conservation cost-share programs or invest in conservation practices is directly impacted by the strength of the agriculture economy. Conservation cost-share programs administered by OCC and our federal partners the NRCS, are critical to preserving working farms and ranches, land conservation, preserving water quality, protecting wildlife and enhancing natural areas for the benefit of all citizens.

## **Social/Political/Demographics**

Population Shifts - Our historic customer and support base has been rural and agricultural Oklahoma. The population and economic shift away from rural Oklahoma and agriculture will be reflected by a similar shift in political power. The state legislature will increasingly consist of a larger number of urban and suburban legislators.

Lifestyle Changes, Affluence Levels, and Education Levels - With steadily increasing amounts of leisure time there is a growing demand for outdoor recreational opportunities. Quality of life issues are receiving more attention. The conservation work performed by the Commission and Conservation Districts can have a major impact on quality of life issues (water quality, air quality, wildlife habitat, public health and safety). The public's demand for outdoor recreational opportunities and clean water will likely drive future funding needs for conservation programs.

As the educational level of Oklahoma's population rises there will likely be higher expectations for environmental protection and natural resource conservation. The Commission faces the

challenge of being able to attract and maintain a highly educated workforce with a wide range of expertise. We are challenged to attract expertise in soils, water quality, engineering, reclamation, public administration, human resources, computer technology, and risk management to name a few. Salary levels for Commission and Conservation District employees lag far behind comparable federal and private sector employees in similar jobs.

## **Government and Regulatory**

Many Commission programs are linked directly to federal programs and funding: the Water Quality Program is limited by Federal Clean Water Act funding; the Abandoned Mine Land Program is limited by the U.S. Department of Interior Office of Surface Mining funding, and the Conservation Programs Division's Rehabilitation of Upstream Flood Control Structures is limited by USDA Natural Resources Conservation Service funding. The levels of federal funding can change dramatically from year to year based on the nation's economy and political decisions, thus impacting the Commission's ability to perform.

The agency's Water Quality Division programs could be significantly impacted by regulatory changes in the nonpoint source pollution management arena. Should EPA move towards a stronger regulatory approach to nonpoint source pollution, it would fundamentally alter the agency's historic approach of working with landowners in a voluntary manner.

## **Competition**

The Conservation Commission's competitors are primarily in the public sector. Many state and federal agencies with responsibilities for natural resources compete for the same financial and human resources. However, the same agencies that we often view as our competitors, such as Oklahoma Water Resources Board, Department of Environmental Quality, Department of Agriculture, Food and Forestry, and the Department of Mines to name a few, are also our partners. The Conservation Commission's ultimate goal is to improve Oklahoma's renewable natural resources; therefore it chooses to work in the many areas of its responsibility using a collaborative model as opposed to a competitive one.

## **Technology**

Communication is and will continue to be a vital key in enabling the Conservation Commission to fulfill its mission of conserving, protecting and restoring Oklahoma's natural resources. The Commission will maintain an up to date awareness of and position itself to take advantage of current and future technological advances in communicating its mission to its customers through a strategic partnership with Conservation Districts and the Natural Resource Conservation Service (NRCS).

It will be necessary for the Commission to stay abreast of technological changes in computer systems, office machine systems, electronic networking, data capture systems and software (enterprise management, computer-aided design, geographic information system and natural resource management). OCC will take advantage of software environments that are constantly

evolving into more robust and user friendly systems allowing focus on using technology to accomplish a task rather than conforming users to time consuming and inefficient software processes.

There are several areas within the agency where the application of GIS and GPS technologies would greatly improve the ability to capture and manage natural resource data. The application of GIS and GPS technology at the Conservation District level will be expanded. Impediments to this have been a lack of funding for equipment and training as well as having qualified people in technical job classifications in the districts who can apply these technologies to local conservation and natural resource management issues.

The Commission has a number of employees who are eager to adopt new technologies for accomplishing tasks related to their work assignments. The agency has made a significant investment in new computers, servers and updated software which will enhance productivity.

It is necessary to upgrade the training and technical ability of Conservation District employees in order to address natural resource management issues and to improve the use of GIS and GPS technology. The Commission will work to improve coordination with NRCS in providing computer and high-speed internet support for Conservation Districts and the technology tools that will enable them to have a local website for citizens to access information about issues of local concern.

## **Markets and Customers**

There is an increasing clientele of landowners who are part-time or hobby farmers living on the urban-rural interface. Historically, our customers were traditional farmers and ranchers who knew the types of programs and services Conservation Districts provided. Today, many of Oklahoma's landowners are part-time farmers, small lot/ranchette, or absentee landowners. Our methods of marketing programs and services must adjust to meet this growing trend. The Commission and Conservation Districts will also have to find ways to communicate the value of our programs to urban/suburban legislators (water quality, recreation, wildlife habitat, quality of life issues) to be successful in this changing environment.

## **Industry Trends and Best Practices**

One of the major industry trends in the conservation community is the steady decline in the number of employees within the USDA Natural Resources Conservation Service workforce, our primary federal partner. Historically, the Commission and Conservation Districts have been dependent on NRCS technical expertise in a variety of areas. Over the past decade the Commission and Conservation Districts have developed technical expertise in a variety of areas that now match or exceed that of our federal partner. While the partnership's fundamental mission of delivering technical, financial, and educational assistance to private landowners remains the same, who and how those services are delivered is increasingly a state or local function.

In a review of conservation programs in other states, we found states with larger and more stable funding for conservation cost-share programs. Many states also made much more technical



assistance available through Conservation Districts. In addition, we found innovative or different methods of organizing Conservation Districts. Some states have fewer, larger Conservation Districts, while others have smaller more numerous districts. In some states all Conservation District Directors are elected on the general ballot. One state conducts interviews with all prospective directors. Conservation Districts in some states have taxing authority.

## **Production and Internal Environment**

The current production and internal environment at the Conservation Commission is one of an agency with a programmatic “can do” attitude in spite of limited human and financial resources. The agency has enjoyed success in developing and implementing new and innovative programs to address critical resource needs while maintaining important traditional program areas. The price of success has been the neglect of other areas such as vehicle and equipment maintenance and replacement, adequate staffing for newly mandated program responsibilities, and adequate work space to house agency staff. In the long term these issues effect production.

Investments in information technology hardware and software resources at the state office level have resulted in needed capability upgrades. Efforts continue to insure investment in hardware and software benefit both district and agency productivity. Information technology field resources are not uniformly distributed and include outdated less efficient technology.

We recognize a need for improvement in budgeting and financial analysis. We recognize the demand for increasingly sophisticated technical employees at the state and field levels. We acknowledge the necessity to provide our existing workforce with both technical and employee support to cope effectively with the current internal environment while maintaining productivity. We recognize the need to adequately compensate district and state employees.

## Financial Performance

As reported in the previous five year agency strategic plan the Conservation Commission experienced a significant increase in expenditures in the ten-year period from FY 1995 to FY 2004 (\$9.6 million to \$16.3 million). In the six fiscal years since FY 2004 agency expenditures continued to increase totaling over 26 million in FY 2010. As FY 2011 begins the Conservation Commission is now managing over 80 million dollars worth of authorized conservation program funding. During the previous five years two state funding initiatives occurred which significantly increased program funding for conservation. First, the legislature designated annual revenue from the gross production tax on oil to go into a Conservation Infrastructure Revolving Fund to support several conservation programs. These programs include the rehabilitation of upstream flood control dams, and a conservation cost share program to address water quality and other soil and water conservation issues. Just over two million dollars has been deposited into this fund on an annual basis. The second initiative was the authorization and sale of a 25 million dollar conservation bond. Proceeds from the bond are being used to address issues in five areas: provide state match for the rehabilitation of upstream flood control dams, provide funds for the operation, maintenance and repair of upstream flood control dams; provide funds for a local cost-share program to repair conservation practices damaged by flood events; address flood damage in the Sugar Creek watershed in Caddo County; and address flooding issues in the City of Kingfisher. The conservation bond represents the largest single state commitment to conservation in the agency's history.

The previous five year period also saw a remarkable increase in federal conservation program dollars coming to the agency. The Commission entered into a partnership with USDA and their Conservation Reserve Enhancement Program to address water quality issues in the Illinois River and Eucha-Spavinaw watersheds in northeast Oklahoma. This is a 20 million dollar program of which the federal government is providing 80% of the funding. In 2009 with the passage of the federal American Recovery and Reinvestment Act (ARRA) an additional 20 million dollars of conservation program funds are now being managed by the Commission. The agency has received ARRA funding from the Natural Resources Conservation Service, EPA, and the U.S. Fish and Wildlife Service. Currently the Commission is also managing a seven million dollar FEMA project in Caddo County. In addition to these special funding and program initiatives, the agency continues to manage significant programs for nonpoint source water quality, abandoned mine land reclamation, high hazard dam protection. We anticipate that overall agency expenditures will continue to spike upward at least during the next two to three years as we utilize these existing federal program dollars. While expenditures from federal funds have increased significantly, the agency has experienced a decline in state general revenue appropriations the past two years. Without the influx of federal program dollars the Commission would have had to have made significant cuts in agency and conservation district personnel and operations. While the increasing federal program dollars and the conservation bond funds have allowed the agency to address some significant natural resource issues, it has placed a strain on personnel to be able to effectively and efficiently deliver the programs.

When the federal program funding declines and the conservation bond funds are expended, we anticipate a real challenge obtaining the annual funding to meet the continuing conservation needs of the state. Beginning in FY 2013 the agency will need from two to three million dollars

annually to address ongoing operation and maintenance of the state's 2105 upstream flood control dams. During the current three year cycle ending in FY 2012 we are spending 7.8 million dollars of bond funds on watershed operation and maintenance. Conservation districts have documented over 22 million dollars of current operation and maintenance needs. In addition to the operation and maintenance needs the Commission will have a continuing need for state funds to match federal funds to rehabilitate high hazard upstream flood control dams. Currently bond funds and funds from the Conservation Infrastructure Revolving Fund are used as match for this program. When authorization for the Conservation Infrastructure Revolving Fund ends in on July 1, 2014 the agency will have no source for match. We estimate an annual need of \$6,000,000 for the rehabilitation program after FY2012 . The Commission as the lead state agency for EPA's nonpoint source water quality program must provide state match in order to access federal funds. In FY 2011 the agency has budgeted just under one million dollars to match EPA water quality grant funds as well as USDA's Conservation Reserve Enhancement Program. This funding comes from the Conservation Infrastructure Revolving Fund. Going forward we anticipate a minimum annual need for water quality match of from one million to one and a half million dollars. The agency currently utilizes the Conservation Infrastructure Revolving Fund for the locally led conservation cost-share program. This program allows conservation districts to fund practices to address natural resource priorities in their district. Going forward we would like to maintain a minimum of one million dollars annually for this cost-share program. The agency also uses the locally led cost-share program expenditures as match for EPA water quality grants. Over the next five years one of our most critical strategic goals is to secure adequate base funding for the programs outlined above. We will be seeking re-authorization of funding for the Conservation Infrastructure Revolving Fund as one important source of revenue. However, to meet the base needs for these programs will require identifying other sources of state funds.

The Commission recognizes that increases in state general appropriations to our agency are unlikely in the near term. While we have tried to buffer the loss of state funds by managing additional federal programs, much of these program funds will end over the next two to three years. To prepare for this eventuality we have initiated a streamlining process to help us maintain the personnel needed for our conservation delivery system. We have established a workgroup that is identifying further efficiencies and developing incentives for conservation districts to consolidate or better share resources. We have reduced the number of full-time conservation district and Commission employees. The challenges ahead are daunting as we try to deliver more and more conservation program dollars with a shrinking work force. We recognize that there may come a time when the state will have to turn back federal conservation dollars because we will not have the human resource infrastructure to deliver the programs. However, the agency is committed to implementing all the efficiencies we can in an effort to maximize the conservation work we put on the ground.

## **The Oklahoma Abandoned Mine Land (AML) Emergency Program Policy**

In 1998 the Oklahoma Conservation Commission (OCC) took over responsibility for addressing emergencies related to abandoned coal mines in eastern Oklahoma. An emergency, as defined by the Office of Surface Mining (OSM), means a sudden danger or impairment that presents a high probability of substantial physical harm to the health, safety, or general welfare of people before the danger can be abated under normal program operation procedures.

OSM has indicated that AML Emergency Program funding will be eliminated in the 2011 Federal budget (starting October 1, 2010). States will be required to fund AML emergency projects from their annual AML reclamation grants. The OCC will need to establish a specific budget amount for AML emergencies in the annual AML grant that is sent to OSM each year. The OCC will budget \$125,000 for AML emergencies each year, unless the frequency and costs of the emergencies necessitate a budget change. This amount was based on OSM AML Emergency expenditures for Oklahoma from FY 2005 through FY 2009. The average AML Emergency expenditure for this period was \$124,008.60. If more funds are needed for AML Emergencies, the funds will have to be taken from the construction category of an annual AML grant. If all AML grant funds are contractually obligated, the AML emergency will be abated when AML funds become available.

In the past, OSM has declared if a site qualifies as an AML emergency. With the transition of funding AML emergencies from the OSM discretionary fund to annual State AML grants, the OCC will now declare if a site is deemed an AML emergency.

The OCC will take the necessary steps to comply with the National Historic Preservation Act, the National Environmental Policy Act, and all Environmental Protection Administration Clean Water Act requirements.

An AML emergency will be given top priority and will supercede the reclamation of all other AML projects, even if they have been designed and funding is available to let construction contracts.

OSM will continue to oversight the OCC AML emergency program as a part of their annual evaluation process.

**OKLAHOMA CONSERVATION COMMISSION**  
**ADMINISTRATION STAFF - SUMMARY OF ACTIVITIES**  
**October 4, 2010**

**Administration**

- Attended the Women in Ag Conference sponsored by the Muskogee County Conservation District.
- Held meetings with staff to discuss revisions to the agency's Strategic Plan
- Attended an interim study meeting
- Negotiated several new agreements and amendments to existing agreements with NRCS.
- Worked with OACD on several matters: area meeting preparation, an upcoming legislative event, a new wildlife credits program, planning for the 2011 NACD South Central meeting, and district insurance.
- Assisted in the preparation of a new agency strategic plan.
- Worked with the District Services Division on several district personnel issues.
- Continued work on how to insure prescribed burns.
- Met with representatives from the Oklahoma Department of Agriculture to discuss the Section 319 water quality funding process.
- Made a presentation on the Dust Bowl and the history of conservation in Oklahoma to a senior citizens group.

**Information**

- Continued technical management of and updating information on OCC's web page. Created and published the following stories:
  - The True Cost of Uncontrolled Development - Cottonwood Creek Sites No. 15 & 54
  - Brookhaven Creek Rehabilitation Project
  - Lt. Gov. Jari Askins Keynotes Women in Ag at Muskogee
  - Building a Rain Garden at Remington Elementary
  - Oklahoma AML Program Wins Reclamation Award from Office of Surface Mining
  - No-Till Wheat Flour Mill Open House
  - Hughes County Conservation District Cedar, Brush & Weed Control Workshop
  - Oklahoma Women in Agriculture and Small Business Conference set for Oct. 14-15
  - Osage Nation Watershed Forum
  - Cedar Hollow Blue Thumb Fish Collection
  - Service Award: Jim Leach, 30 Years
  - Service Award: Brooks Tramell, 15 Years
  - Service Award: Jason Ramming, 10 Years
  - Service Award: Kevin Gustavson, Five Years
- Assisted Muskogee County and Okmulgee County Conservation Districts with photography at the Muskogee Women in Agriculture and Small Business Conference on Sept. 14.
- Provided Noble County Conservation District with a recording of a 20-minute video about the Dust Bowl.
- Attended SPARC No-Till Wheat Flour Mill Open House in Hydro on Sept. 7.
- Presided at monthly meeting of Oklahoma State Webmanagers Group
- Produced OCC monthly newsletter and prepared newsletters for OCC web page.
- Deposited OCC publications with the Publication Clearinghouse of the Dept. of Libraries in compliance with statutes.
- Continued arrangements for farm shows and convention display booths.

## **Trial Outreach Coordinator**

### **Stamper Project –**

- A tour was scheduled for September 13 but was canceled due to a key participant's family emergency.
- A NRCS Conservation Innovation Grant was applied for in June. NRCS did not fund the grant request.
- The Cherokee Hills RC&D's proposal for funding with federal Department of Energy stimulus funds through the ODOC/ODOE was selected for forwarding to Washington, DC. This funding proposal was then rejected by the Department of Energy because they classified the project as "research and development" (R&D). This project is not R&D but is a production facility that produces renewable energy from biogas and organic liquid fertilizer. The R&D was completed before moving forward with construction of 20,000 square feet of facilities. This in turn continues to provide better nutrient management options in watersheds that provide drinking water for rural communities and Tulsa. This funding would have created over 35 rural jobs.

### **Chickasaw Nation –**

- No new information provided to confirm a signing ceremony. MOU has been agreed upon and is in the Governor's office.

### **Kiowa Tribal Conservation District and Water Resources Board (KTCD) -**

- Continue to work with the KTCD on their long range plan and efforts.

### **Coordinated Partnership with the Oklahoma Tribal Conservation Advisory Council (OTCAC) –**

- A meeting with the tribes located in Ottawa County is scheduled for October 20 in Afton.
- OTCAC has coordinated a meeting between the University of Arkansas and the tribes concerning risk management.
- Worked with OTCAC on the schedule for the next year. Met August 19 with University of AR on meetings.

### **Oklahoma Prescribed Fire Council (OPFC)/Controlled Burn Indemnity Fund –**

- Mr. Doug Rigdon, Rigdon & Associates (IL) presented information on private sector liability coverage for prescribed burns to the OPFC Steering Committee and OCC team members on August 24.

An umbrella organization will be formed with and for the OK Burn Associations to organize and then apply for the private sector liability insurance. This organization will be similar to one already formed, in Texas/Edwards Plateau, and making private sector liability insurance available and reasonably priced

**OKLAHOMA CONSERVATION COMMISSION  
DISTRICT SERVICES DIVISION  
SEPTEMBER MONTHLY SUMMARY**

**Lisa Knauf, Director**

**October 4, 2010 Commission Meeting**

**Provided Assistance to the Following Districts**

Atoka	Garvin	Major	Pawnee
Bryan	Harper	Mayes	Pittsburg
Caney Valley	Haskell	Muskogee	Pontotoc
Central North	Hughes	Noble	Pushmataha
Cleveland	Kiowa	North Caddo	Shawnee
Craig	Latimer	Nowata	South Caddo
Deer Creek	Lincoln	Osage	Tulsa
East Woods	Little River		

**Meetings & Events Attended**

\* Conservation District Board Meetings Attended:

- Bryan
- Caney Valley
- Kiowa County
- Payne County
- Pittsburg County
- Pontotoc County
- Pushmataha

\* Attended the National Watershed Coalition board meeting in Oklahoma City

**Division Activities**

- \* Continued to assist Pittsburg Co., East Woods County, Pushmataha, Caney Valley and Bryan Conservation Districts with preparations for board meeting including development of agenda, payment of bills and taxes, recording minutes. Also attended meeting to provide continued assistance.
- \* Continued investigation into embezzlement of funds from Pushmataha Conservation District. Made inquiries to District Attorney's Office, compiled records to determine amount of funds taken. Met with District Attorney's investigator during board meeting. Prepared correspondence to Oklahoma Employment Security Commission regarding appeal of unemployment claim.
- \* Assisted Caney Valley Conservation District with completion of the investigation into embezzlement of funds and review of IRS tax issue.
- \* Provided assistance to South Caddo CD with personnel issue.
- \* Assisted with development of correspondence to all districts regarding financial management.
- \* Notified all districts that the use of stamped signatures on documents and checks was unacceptable.
- \* Revised portion of the OCC Strategic Plan dealing with District Services Division and Conservation Districts.
- \* Reviewed and revised Field Services portion of the OCC budget request.

- \* Began planning of the OACD Area Meetings.
- \* Notified districts that local operational agreement for the contributions agreement should be reviewed and approved at board meeting.
- \* Continued compiling data from spring prescribed burn season for ARRA project reporting.
- \* Worked with NRCS to complete forms for amendment to contributions agreement.
- \* Finalized flood plain easement agreement with NRCS.
- \* Continued compiling district budget requests.
- \* Assisted Districts and Agency staff with NRCS computer access issues.
- \* Compiled NRCS performance worksheets.
- \* Reviewed conservation district minutes.
- \* Assisted districts with information regarding district employee promotions, vacancies and upcoming retirements.



**OKLAHOMA CONSERVATION COMMISSION  
WATER QUALITY DIVISION  
SEPTEMBER MONTHLY SUMMARY**

Shanon Phillips, Director  
October 4, 2010

**Conservation District Meetings**

- Staff attended Adair, Blaine, Cherokee, Central North Canadian River, Delaware, East Canadian, Haskell, Latimer, LeFlore, Pittsburg, South Caddo, and Talihina Conservation District Board meetings.

**Implementation/Demonstration Projects**

**Honey Creek**

- Staff conducted the following activities:
  - 97 conservation plans have been written on 18,718 acres in the watershed
  - 48 cooperators are actively participating and 32 have completed implementation
  - Conducted 14 site visits this month to inspect completed BMPs
  - Held 10 consultations with producers or interested participants
  - Funds spent during August 2010: \$74,577
  - Total claims paid to date through 9/14/2010: \$1,118,877
  - Cooperators Share: \$562,927
  - Funds obligated to date: \$1,527,873
- BMPs completed in the watershed:
  - Added 4,797 new linear feet of fencing this month, for a total of 116,817 linear feet
  - Installed 1 new septic system this month, for a total of 11 septic systems replaced
  - Constructed 5 new ponds this month, for a total of 18 ponds constructed
  - Installed 11 new watering facilities this month, for a total of 102 watering facilities
  - Installed 1,649 feet of pipeline this month, for a total of 33,563 feet of pipeline
  - Drilled 5 new water wells this month, for a total of 36 water wells completed
  - A total of 23,149 feet of riparian exclusion fencing has been installed
  - A total of 117 acres of grass planting has been completed

**North Canadian River**

- Staff conducted the following activities:
  - 102 conservation plans have been written in the watershed
  - Held 26 consultations with producers or interested participants
  - Total claims paid to date through 9/14/2010: \$675,018
  - Cooperators Share: \$90,359
  - Funds obligated to date: \$1,563,896
- BMPs completed in the watershed:
  - 15,318 acres of no-till were applied and 2,019 acres are pending
  - 45,780 linear feet of riparian fencing were applied and 27,990 feet are pending
  - 840 acres of grass planting were applied and 914 acres are pending
  - 405 acres of riparian exclusion were applied and 157 acres are pending

**Illinois River Riparian Project**

- Staff conducted the following activities:
  - 123 conservation plans have been written in the watershed
  - 32 cooperators are actively participating and 67 have completed implementation

- Conducted 1 site visits this month to inspect completed BMPs
- Held 3 consultations with producers or interested participants
- Funds spend during August 2010: \$74,577
- Total 319 claims paid to date through 9/14/2010: \$906,859
- Cooperators Share: \$441,135
- Total spent on the ground federal and landowners: \$1,348,005
- Funds obligated to date: \$1,524,367
- BMPs completed in the watershed:
  - A total of 27,886 linear feet of cross fencing has been installed
  - A total of 621 acres of riparian area exclusion fencing including 36,783 linear feet of fencing
  - 8 winter feeding facilities/waste storage facilities
  - 68 heavy use areas
  - 61 septic systems
  - 46 watering facilities, 9 water wells, 2 ponds, 2 rural water taps
  - 32,305 feet of pipeline

### **Spavinaw Creek**

- Staff conducted the following activities:
  - 60 cooperators are actively participating
  - Cooperator's share (08-145): \$724,420
  - Total Claims Paid (08-145):  $\$980,182 + \$724,420 = \$1,704,602$
  - Available funding under the 08-145 Grant = \$480,996 (from 8/2008-9/10/2010)
  - Available funding under the 09-151 Grant = \$320,696
  - Available funding under Fund 210 = \$243,800
  - State FY2010 250 Fund = \$250,000
  - Balance Available: \$116,633

### **Conservation Reserve Enhancement Program**

- Staff conducted the following activities:
  - 111 applications have been taken for CREP and 109 site visits have occurred
  - 42 contracts have been approved and signed
  - 417 acres are enrolled and 472 acres are pending
  - In conjunction with riparian acreage enrolled in 319 programs and Oklahoma Scenic Rivers, this represents water quality runoff protection of approximately 14,882 acres.
  - Contracted Funding from FSA to-date: \$665,850
  - Remaining FSA funds: \$19,434,149
  - Contracted Funding from the State: \$2,183
  - Contracted Funding from landowners: \$59,921 for a total of \$727,954

### **Technical Writing**

- Staff **submitted** to EPA the following:
  - Illinois River Watershed Update Report
  - Illinois River Watershed Based Plan
  - Report of trainings attended and trainings hosted by OCC WQ during 2010
- Staff conducted the following activities:
  - Identified cyanobacteria in water samples
  - Fulfilled three data request (MB)
  - Facilitated meter calibration and QA activities for field staff (9/22)
  - Assisted with the rotating basin monitoring site selection and planning process

## Monitoring

- Staff conducted the following activities:
  - Conducted routine water quality monitoring for the Rotating Basins - 4.2 sites (Upper Red River and Washita River Basin) and 5.2 (Lower Red River Basin) & probabilistic sites for Lower Arkansas, Lower Canadian and Lower N. Canadian and Lower Red River Basin. In addition, water samples were collected for Honey Creek, Lake Eucha/Spavinaw, Illinois River CREP, and the North Canadian Project sites.
  - Continued fish and habitat assessment collections for Rotating Basin 5.2 sites. Approximately 90 of the scheduled fish collections for the current summer season have been completed.
  - Completed the rotation and site selection planning phase for the next 5 years for the Rotating Basin Project.

## Wetlands Coordinator

- Staff conducted the following activities:
  - Conducted 20 wetland determinations
  - Met with City of Norman staff to develop signage for Brookhaven Creek for "Partnerships for Wetland Protection, Restoration, and Planning in an Urban Setting" OCC #571 (9/1)
  - Implemented stream and wetland design including dirt work and rock structures for Brookhaven Creek for "Partnerships for Wetland Protection, Restoration, and Planning in an Urban Setting" OCC #571, Norman
  - Met with WRI staff to develop education and outreach efforts to discuss the importance of alternative methods of stormwater management including wetlands and natural channel design "Partnerships for Wetland Protection, Restoration, and Planning in an Urban Setting" OCC #571, Norman (9/6)
  - Participated in EPA's end of year review for all wetland projects, Oklahoma City (9/15)  
Conducted ground truthing for National Wetland Inventory maps for "Wetlands Monitoring Program Development" OCC #570, Deep Fork watershed (9/17)
  - Completed QAPP development for "Development of Floristic Quality Index Approaches for Wetland Plant Communities in Oklahoma" OCC #573

## Carbon Program

- Staff conducted the following activities:
  - Finalized budget and agreements for Conservation Innovation Grant
  - Prepared for fall verification in WFEC project areas
  - Communicated with districts to prepare them for new 4-level verifier training program
  - Worked with OSU to draft informational handout about soil carbon sampling methods

## Caddo County Special Projects

- Staff conducted the following activities:
  - Attended a board meeting for the APARC organization
  - Continued working to acquire Sugar Creek land rights
  - Researched Sugar Creek land rights for reach 3
  - Prepared forms for CCPI cooperators

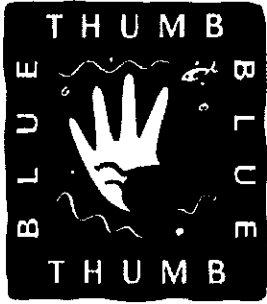
## Blue Thumb - Statewide

- Staff conducted the following activities:
  - Conducted fish and benthic macroinvertebrate collections
  - Conducted Blue Thumb training for new volunteers at Tulsa CCD (9/18-9/19)
  - Conducted a mini-academy water monitoring training at Grove High School
  - Conducted a mini-academy water monitoring training at Edmond Sante Fe High School

- Worked exhibit at Pelican Festival in Grove (9/24-9/25)
- Gave presentation to Deer Creek High School (9/22)
- Worked with INCOG to design, plan, and implement rain gardens in Tulsa Sapulpa

## Meetings

- Various staff attended the following meetings:
  - Attended GIS council meeting, OKC (9/10)
  - Attended EPA TMDL meeting for the Illinois River, Siloam Springs, AR (9/14)
  - Attended OK State Web Group Meeting, OKC (9/14)
  - Attended Water Quality Standards working group meeting OWRB, OKC (9/15)
  - Attended OCLWA meeting, OKC (9/16)
  - Attended South Central Arc Users Group conference and training, OKC (9/20-9/23)
  - Attended NRCS Water Quality Assessment course, Hutchinson, KS (9/21-9/24)\*
  - Attended HRDS training, OKC (9/24)\*
  - Attended SE Asian Poultry Producers Seminar in Jay (9/29)\*
  - Attended *Greenway of the Cherokee Ozarks* working conference, Tahlequah (9/29)\*
  
- An asterisk indicates that the activity was planned when the monthly summary was submitted.



# Blue Thumb—September, 2010

## Pictorial Report



*Blue Thumb fish collections are about more than filling a jar with fish. Above, biology students from Northeastern State University learn what fish live in Tahlequah Creek, while below, Bixby High School students learn what it takes to make a fish collection happen.*

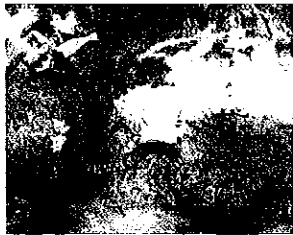


*Earthwork begins on a new rain garden at Remington Elementary in Tulsa. The Oklahoma Conservation Commission and the City of Tulsa are partners with the Indian Nation Council of Governments. Local volunteers will help with planting and the laying of sod.*

*Blue Thumb welcomes back the Delaware Indian Tribe as they resume monitoring on Sugar Creek in Caddo County.*



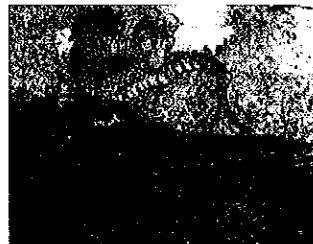
### *The Time spent on a Creek leads to a real study of Nature! See what staff and volunteers saw on Little Deep Fork Creek on August 27!*



*A banded water snake somehow captured a catfish and pulled it out of the water!*



*The catfish almost escaped, but the snake held tight, and worked his way down.*



*It appeared the fish was larger than the snake's mouth—the beauty of a jaw that comes unhinged.*



*MMMMMMMM, Friday's catfish special was the best ever!*

**OKLAHOMA CONSERVATION COMMISSION  
ABANDONED MINE LAND DIVISION MONTHLY SUMMARY**

**Mike Kastl, AML Program Director**

October 4, 2010

**FY 2009 AML SIMPLIFIED GRANT (\$1,850,042)** - The following is the status report on the submitted projects:

1. Farley - 085 (Sequoyah County)

The contractor, Talon/LPE, of Tulsa, has completed approximately 20 percent of the work in 45 percent of the contract time. The contractor has been notified they are behind schedule and they have responded with additional equipment and manpower to complete the project within the allowed contract time. A new plan for completing the project within is forthcoming. The contract completion date is February 4, 2011, which corresponds to a contract time of 200 calendar days.

2. Bronson - 071 (Rogers County)

The reclamation work has been completed. Final seeding of the site will occur this fall.

**FY 2010 AML SIMPLIFIED GRANT (\$2,623,207)** - The following is the status report on the submitted projects:

1. Bates/Fullerton - 259 (Rogers County)

A site visit with the landowner, Bennie Fullerton, has been completed. The land owner is in agreement with the revision of the limits of land reclamation. The site will be redesigned and possibly advertised for bids in early 2011.

2. Shouse - 251 (Rogers County)

The prebid conference for contractors was held August 17, and the bids were opened on August 26. Thomas Construction, Inc., of Ft. Scott, Kansas, was the low bidder at \$162,182.65. The AML Program accepted Thomas Construction, Inc., and the contract is being processed. The reclamation work should begin in early October and be completed in 90 calendar days.

3. Azbill - 246 (Rogers County)

The project design and the environmental requirements have been completed. On August 26 the Conservation Commission submitted the Azbill project to the Office of Surface Mining for funding under this grant.

The Azbill abandoned mine land site is approximately 3 miles northwest of the town of Oologah (population 883). A heavily traveled black-top road is south of the site. There is approximately 2,500 linear feet of dangerous highwall (DH) and one hazardous water body (HWB) very accessible to people living in close proximity of the water-filled strip pit. The DH is approximately 20 feet high (above the surface of the water). Both the DH and the HWB are high Priority 2 AML hazards. There are several people living within one mile of the project site. Due to the proximity of the strip pit to the residences near the site and the residences in the town of Oologah, the potential for death and or injury is very high. The owners of the project have repeatedly requested that the site be reclaimed.

The Oklahoma Conservation Commission proposes to use federal funds from the Office of Surface Mining to correct the public safety hazards at the site. The following reclamation action is being proposed:

The strip pit will be eliminated by backfilling against the highwall using existing spoil material from on-site. Approximately 4 acres of surface water will be eliminated. No pumping of water will be necessary.

A storm water management plan to control erosion and sedimentation during the construction phase will be developed and implemented.

The disturbed areas will be graded and shaped to conform to the adjacent topography and a permanent vegetative cover of grass and/or trees and shrubs will be planted.

Approximately 42 acres of land will be reclaimed at an estimated cost of \$ 400,000.

The bid package was delivered to the Department of Central Services Construction and Properties Division on September 8 to begin the bid process.

## **FUTURE PROJECTS**

### **Reves Phase 2 - 101/102 (Sequoyah County)**

We anticipate environmental approvals and project submission to OSM for funding in September, and the project advertised for construction in October. Site reclamation should be completed in the fall of 2011.

### **Peevyhouse - 140 (Haskell County)**

An environmental study for the American Burying Beetle has been performed and the beetle was not found. The site aerial survey has been completed in conjunction with an OSM project and is being processed. After receipt of the aerial survey, the site will be designed and put out for bid. It is anticipated that the project will be bid towards the end of the year.

## **AML EMERGENCY PROGRAM**

### **Ogden (Pittsburg County)**

Construction has been completed. Site will be vegetated when weather is cooler.

**MONTHLY SUMMARY  
FINANCIAL MANAGEMENT & HUMAN RESOURCES  
STEVEN COFFMAN, COMPTROLLER**

**October 4, 2010**

- Processed vouchers
- Reconciled August activity to the Office of State Finance and the State Treasurer
- Reconciled August activity for the employer's share of health insurance and retirement from 87 conservation districts
- Prepared and submitted requests for funds from EPA 319 and 104B3 grants via Office of the Secretary of the Environment, rehabilitation funding and Tar Creek via the U.S.D.A. Natural Resources Conservation Service
- Preparation of AFLAC and OSEEGIB billings for Plan Year 2010
- Prepared monthly mileage reports for state leased motor vehicles to the Department of Central Services, Motor Pool Division
- Processed Request for Acquisitions
- Completed and submitted the state GAAP Conversion packages for Grants Receivable / Deferred Revenue, Accounts Payable and Schedule of Expenditures for Federal Awards
- Attended training for purchase card conversion to Bank of America
- Continued project with the Office of State Finance for electronic notification of payment via email for Conservation Districts
- Completed conversion project with the Office of State Finance for electronic fund transfer of travel payments to state employees
- Prepared and submitted agency's FY-2012 Budget Work Program to the Office of State Finance
- Prepared and submitted agency's FY-2011 thru FY-2016 Strategic Plan and submitted to the Office of State Finance
- Prepared and submitted agency's FY-2011 Affirmative Action Plan to the Office of Personnel Management



**OKLAHOMA CONSERVATION COMMISSION  
INFORMATION TECHNOLOGY DIVISION MONTHLY SUMMARY**

**Mike Sharp, Director**

August, 2010

- Sharp attended National Association of Abandoned Mine Land Programs meeting in Scranton, PA on September 19-22.

**IT Support Activity**

- Worked on various hardware and software support issues for OCC computer systems.
- Routine server, software and anti-virus and anti-spam maintenance.
- Worked with various conservation districts on IT issues.
- Met with OSF data center staff/contractor to plan re-location of agency servers from old data center to new data center located at 30<sup>th</sup> & Lincoln. Move likely will occur sometime in October.
- Planning migration of data and testing new servers which are replacing aging servers.

**Geographic Information System (GIS) Activity**

- Provided GIS support to AML, WQ, Administration, Conservation Programs and Blue Thumb.
- Met with AML Inspector Henry Roye and GPS located drill hole sites and other features for the AML Highway 270 Emergency Project at Alderson on August 2.
- Worked with the Watershed Assessment Team on various issues.

**Office of Geographic Information**

- Participated in various Oklahoma Broadband Team meetings.
- Met with Alex Pettit, State CIO, to discuss activities of the State Geographic Information Council and the Office of Geographic Information.
- Participated in the Landcover Layer update Workgroup meeting.
- Worked with contractor MY Consulting and sub-contractor Coordinate Solutions on the OKMaps Phase 2 project.
- Configured new servers for OKMaps Phase 2 that will serve as production servers. All are located at the OSF Data Center.
- Planning for meeting of the Mid-America GIS Consortium Clearinghouse to be held in OKC on October 27-28, 2010.
- Worked with OPM on GIS job descriptions.
- Conducted September GI Council meeting held on September 10 in the OWRB conference room at 10:30 am. Presentation was by Troy Frazier of the OK Tax Commission. The topic was "Map Server - County Map Viewer". The next Council meeting will be on November 5 where Alex Pettit, State CIO, will make a presentation on "Communities of Practice and the Federated Security Model".
- Worked on planning and coordination of the OK South Central Arc User Group meeting to be held in Oklahoma City at the Moore-Norman Technology Center-South Penn Campus which was held on September 21.

**OKLAHOMA CONSERVATION COMMISSION  
CONSERVATION PROGRAMS DIVISION**

**Robert W. Toole, Director**

**October 4, 2010**

Administration

- CPD administration & management: CPD Staff Meeting; WT staff meeting
- Government Affairs: Kingfisher Flood Project Administration; OCIA Bond Administration
- CD Board Meetings: Grady County, Garvin
- OCC Administration: Principle Staff Meeting
- Dam Safety ICS Team: ICS Team Training Plan Development
- NRCS: Watershed O&M and Rehabilitation Coordination

Cost-Share Program

- Water Quality: Consulted with Water Quality Division staff to process priority watershed and litter transfer claims. Provided locally led cost-share match information to Water Quality staff.
- Reviewed monthly reports received from conservation districts.
- Conducted staff training for Kiowa County CD.
- Claims: Processed 117 cost-share claims for a total reimbursement of \$279,122.77 including:
  - 99 locally led claims for a total of \$165,757.79
  - 18 Priority Watershed claims for a total of \$113,364.98
- Assistance: Provided Cost-Share Program assistance to 23 Conservation Districts:

Latimer County	Kiowa County	Little River
Love County	Noble County	Jackson County
Caney Valley	Jefferson County	Osage County
Tulsa County	Seminole County	Talihina
Lincoln County	Pittsburg County	Wagoner County
Okmulgee County	Deer Creek	Nowata County
Payne County	Shawnee	Kay County
Cherokee County	Texas County	

Conservation Education

- Assistance: provided Conservation Education assistance via phone or email to 13 conservation districts:

Blaine County	Central North Canadian River	Cleveland County
Craig County	Dewey County	Haskell County
Kiamichi	Noble County	Oklahoma County
Okmulgee County	Payne County	Rogers County
Woodward County		
- District Education Events:
  - o Continued planning for 2011 Oklahoma Envirothon competition.
- OKEECC
  - o Continued planning for the 2010 H2O Oklahoma Water Festival
  - o Continued planning for the 2010 Wildlife EXPO.
  - o Attended Environmental Literacy Plan meeting.
- Project WET
  - o Conducted Project WET workshop at Purcell and WOW! the Wonders of Wetlands workshop at Miami.
  - o Shipped materials for 2 Project WET workshops.
  - o Completed database entry and certificates for 3 workshops.
  - o Completed registrations for 4-State Ecosystem Workshop for facilitators
- Watersheds
  - o Continued planning for North Canadian River Watershed tour.
  - o Developed and submitted grant application to Kirkpatrick Foundation.
- Meetings
- Attended Oklahoma County CD board meeting.

### Watershed Rehabilitation

- Administrative, technical and land rights assistance to 5 Conservation Districts:
  - Sequoyah County – Sallisaw 32, 33, 34
  - Coal County – Caney Coon 2MI
  - Kingfisher County – Cottonwood 15
  - South Caddo – Sugar L 44
  - Pontotoc County – Upper Clear Boggy 33, 34, 35 & 36
- Contracting:
  - West Caddo CD-Sugar L43 construction progressing
  - East Canadian County CD-Cottonwood 17 construction progress
  - Adair County CD-Sallisaw 18M construction progressing
  - Seminole County CD-Big Wewoka 29 construction progressing
  - Washita County CD-Turkey 9 scheduled pre-construction meeting on November 2
  - Caney Valley CD-Double 3 rehabilitation repairs scheduled pre-construction meeting on October 14
  - Deer Creek CD-Cobb 1 scheduled pre-construction meeting on October 18
- Rehabilitation Assessment Project:
  - field reviews conducted to date: 71
  - breach analysis & mapping: 40 complete
  - rehab alternatives & ranking: 28 in progress
  - assessment report preparation: 35 in progress
- NRCS Rehabilitation Agreement Management: 16 agreements for a total of \$42 million
- Conducted watershed assessments in Cherokee County, Muskogee County, Okmulgee County, Creek County, Okfuskee County, and Logan County
- Rehabilitation Project Status:
  - Construction Complete-19
  - Contracting/Construction Started-2
  - Construction Pending Land Rights-13
  - Planning & Design Underway-12

### Operation & Maintenance

- Technical Assistance: Provided technical assistance for watershed O&M to 29 Conservation Districts:

Coal County	Caney Valley	Grady County
Lincoln County	Custer County	McClain County
North Fork of Red River	Okfuskee County	Garfield County
Garvin	Kiowa County	Adair County
Creek County	Kay County	Washita County
Atoka County	Tillman County	Stephens County
South Caddo	Konawa	Logan County
Okmulgee County	Noble County	Latimer County
Pontotoc County	North Caddo	Harmon County
West Caddo	Upper Washita	
- Conservation District O&M Plans & Priorities - \$22 million identified needs.
- Corrective Action Management: monitoring 9 sites.
- CD Board Meetings: East Canadian County
- Watershed Aide Management: Konawa; Kiowa County; Murray County; Washita County; Grady County
- NRCS Remedial & EWP Agreement Management: 5 agreements for a total of \$3.3 million
- Claims: Processed 26 watershed claims for a total reimbursement of \$226,032.35
- Watershed Aide Staffing Requests: Arbuckle/Love County; Garvin; Pontotoc County; Lincoln County; Creek County; South Caddo/North Caddo/West Caddo; Upper Washita
- O&M Funding Requests:
  - This month: 43 requests reviewed; 36 requests approved for a total amount of \$246,643.56 Conservation District's assisted
  - To date: \$2,792,969.07 total amount allocated from bond funds; 48 Conservation District's assisted
- Contracting: Remedial Repairs
  - Bryan, Lower Clear Boggy 38-contract progressing
  - Kay County, Duck Creek Channel-construction complete
  - Garfield County-Upper Black Bear 28-construction progressing
  - South Caddo, Keechi-construction complete
  - South Caddo, Sugar Creek Farrow Drop & Station 493-pre-construction meeting scheduled for October 5