

AGENDA
OKLAHOMA CONSERVATION COMMISSION
Agriculture Building Board Room - 2800 N. Lincoln
Oklahoma City, Oklahoma
Monday, October 3, 2011 - 9:30 a.m.

1. Call to Order.
2. Roll call.
3. Pledge of Allegiance.
4. Discussion and possible approval of regular meeting minutes held September 1, 2011.
5. Discussion and possible approval of Recommendations for Appointment of Conservation District Director (Exhibit #1).
6. Discussion and possible approval of Claims and Financial Statement (Exhibit #2).
7. Recognition of Employees:
 - a. Stacy Hansen, Oklahoma Carbon Sequestration Certification Program Director, for 5 years of service.
 - b. Lisa Knauf Owen, District Services Director, Employee of the Quarter.
8. Presentation of Commission Agreements (Exhibit #3):

Discussion and possible approval of the following new agreement:

 - a. Eligible verifying conservation Districts to provide verification for the carbon program as directed and be compensated at an hourly rate and for mileage.

Discussion and possible approval of the following amended agreement:

 - b. Oklahoma State University to perform streambank stabilization activities for the Illinois River Streambank Stabilization Project; Amendment 2 increases amount of agreement to \$636,777.

Discussion and possible ratification of the following new agreement:

 - c. Natural Resources Conservation Service No. 68-7335-1-28 for funding of a new Conservation Leadership Program in Oklahoma.
9. Out of State Travel Requests (Exhibit #4):

Discussion and possible ratification of the following request:

 - a. Introduction to Managing Environmental Data Training Course, November 1-3, 2011, Greenwich Village, Colorado.

Discussion and possible approval of the following request:

 - b. Autodesk University, November 28-December 1, 2011, Las Vegas, Nevada.

10. Discussion and possible approval of the Conservation Commission's FY2013 budget request (Exhibit #5).
11. Discussion and possible approval of Cost-Share Program - Program Year 13 special requests:
 - a. Beaver County Conservation District to add Pumping Plant (533) for solar pumps.
 - b. Delaware County Conservation District to add the practice Heavy Use Area Protection (561) to be used in conjunction with Watering Facility (614).
 - c. All conservation districts to add Clip & Cut 10-30% and Clip & Cut > 30% as components to the Brush Management practice.
12. Public Comments.
13. New Business.
14. Break (at option of the Chair)
15. Status Reports:
 - a. Oklahoma Conservation Commission Members
 - b. Oklahoma Conservation Commission Staff
 1. Mike Thralls, Executive Director
 2. Lisa Knauf Owen, District Services Director
 3. Shanon Phillips, Water Quality Director
 4. Mike Kastl, Abandoned Mine Land Director
 5. Steve Coffman, Financial Management and Human Resources Director
 6. Shellie Willoughby, Information Technology Division GIS Specialist
 7. Robert Toole, Conservation Programs Director
 8. Ben Pollard, Assistant Director
 - c. Oklahoma Association of Conservation Districts
 - d. USDA-Natural Resources Conservation Service
 - e. Oklahoma Department of Agriculture, Food and Forestry
16. Next Meeting: Monday, November 7, 2011, Agriculture Building Board Room, 2800 N. Lincoln Boulevard, Oklahoma City, Oklahoma at 9:30 a.m.
17. Adjournment.

**OKLAHOMA CONSERVATION COMMISSION
CLAIMS REGISTER BY PROGRAM
FOR THE PERIOD OF AUGUST 22, 2011 THRU SEPTEMBER 18, 2011**

Voucher	Fund Class	Department	Date	Amount	Account	Payee
Employee Withholdings / Retirement / Insurance						
34389	40000	3000002	8/25/2011	\$1,817.15	512120	AFLAC
34389	70000	3000002	8/25/2011	\$4,457.54	512120	AFLAC
34389	40000	3000002	8/25/2011	\$95.00	531600	AFLAC
34390	70000	3000002	8/25/2011	\$5,792.93	512110	STATE & EDUC EMPL GRP INS BD
34390	25000	3000002	8/25/2011	\$137,504.08	512110	STATE & EDUC EMPL GRP INS BD
34460	19201	1000005	9/13/2011	\$0.65	519130	EMPLOYEES BENEFITS COUNCIL
34460	41500	2000008	9/13/2011	\$3.01	519130	EMPLOYEES BENEFITS COUNCIL
34460	40000	3000004	9/13/2011	\$12.49	519130	EMPLOYEES BENEFITS COUNCIL
34460	19201	3000005	9/13/2011	\$13.82	519130	EMPLOYEES BENEFITS COUNCIL
34460	40000	5000002	9/13/2011	\$14.76	519130	EMPLOYEES BENEFITS COUNCIL
34460	19201	1000001	9/13/2011	\$25.31	519130	EMPLOYEES BENEFITS COUNCIL
34460	40000	4000005	9/13/2011	\$43.10	519130	EMPLOYEES BENEFITS COUNCIL
34460	40000	4000001	9/13/2011	\$50.59	519130	EMPLOYEES BENEFITS COUNCIL
34460	19201	2000001	9/13/2011	\$78.41	519130	EMPLOYEES BENEFITS COUNCIL
34460	40000	5000001	9/13/2011	\$108.60	519130	EMPLOYEES BENEFITS COUNCIL
34466	40000	3000002	9/13/2011	\$2,250.00	512310	COMPSOURCE OKLAHOMA
34469	70000	3000002	9/13/2011	\$13,660.69	513250	OKLAHOMA PUBLIC EMPLOYEES RETIREMENT SYS
34469	40000	3000002	9/13/2011	\$60,243.30	513250	OKLAHOMA PUBLIC EMPLOYEES RETIREMENT SYS
H0204419	99400		8/26/2011	\$26.00	633110	AMERICAN GENERAL LIFE INS CO
H0204420	99400		8/26/2011	\$320.03	633110	WASHINGTON NATIONAL INSURANCE COMPANY
H0204421	99400		8/26/2011	\$220.00	633190	UNITED WAY OF CENTRAL OKLAHOMA INC
H0204422	99400		8/26/2011	\$300.00	633190	OKLAHOMA COLLEGE 529 SAVINGS PLAN
H0204423	99400		8/26/2011	\$786.59	633110	AMERICAN FAMILY LIFE ASSURANCE CO
H0204424	99400		8/26/2011	\$400.00	633130	CREDIT UNION ONE OF OKLAHOMA
H0204425	99400		8/26/2011	\$75.00	633190	OKLA PUBLIC EMPLOYEES ASSOC
H0204426	99400		8/26/2011	\$5,730.00	633130	OKLA EMPLOYEES CREDIT UNION
H0204427	99400		8/26/2011	\$59.17	633110	TRANSAMERICA LIFE INSURANCE COMPANY

\$234,088.22 Employee Withholdings / Retirement / Insurance

Administration

34312	40000	1000001	8/22/2011	\$446.50	532140	SHARP ELECTRONICS CORPORATION
34315	19201	1000001	8/22/2011	\$33.38	531110	FEDEX FREIGHT EAST INC
34316	19201	1000001	8/22/2011	\$33.43	532140	SHARP ELECTRONICS CORPORATION
34316	19201	1000001	8/22/2011	\$212.50	532140	SHARP ELECTRONICS CORPORATION
34316	19201	1000001	8/22/2011	\$618.64	532140	SHARP ELECTRONICS CORPORATION
34318	19201	1000001	8/22/2011	\$1.69	531130	AT&T CORPORATION
34350	19201	1000001	8/22/2011	\$12.90	536140	EUREKA WATER COMPANY
34351	19201	1000002	8/22/2011	\$646.18	533140	OFFICE OF STATE FINANCE
34352	19201	1000001	8/22/2011	\$864.19	531230	OFFICE OF STATE FINANCE
34353	40000	1000001	8/22/2011	\$1,246.00	515560	OFFICE OF STATE FINANCE
34354	19201	1000002	8/22/2011	\$1,051.00	515380	OFFICE OF STATE FINANCE
34367	19201	1000001	8/23/2011	\$62.50	532130	AMERICAN SELF STORAGE
34368	19201	1000001	8/23/2011	\$62.50	532130	AMERICAN SELF STORAGE
34369	19201	1000001	8/23/2011	\$62.50	532130	AMERICAN SELF STORAGE
34370	19201	1000001	8/23/2011	\$62.35	532130	AMERICAN SELF STORAGE
34371	19201	1000001	8/23/2011	\$62.50	532130	AMERICAN SELF STORAGE
34372	19201	1000001	8/23/2011	\$41.67	532130	AMERICAN SELF STORAGE
34373	19201	1000001	8/23/2011	\$83.33	532130	AMERICAN SELF STORAGE

**OKLAHOMA CONSERVATION COMMISSION
CLAIMS REGISTER BY PROGRAM
FOR THE PERIOD OF AUGUST 22, 2011 THRU SEPTEMBER 18, 2011**

Voucher	Fund Class	Department	Date	Amount	Account	Payee
34374	19201	1000001	8/23/2011	\$41.67	532130	AMERICAN SELF STORAGE
34375	19201	1000001	8/23/2011	\$83.33	532130	AMERICAN SELF STORAGE
34376	19201	1000001	8/23/2011	\$62.50	532130	AMERICAN SELF STORAGE
34377	19201	1000001	8/23/2011	\$62.50	532130	AMERICAN SELF STORAGE
34378	19201	1000001	8/23/2011	\$62.50	532130	AMERICAN SELF STORAGE
34379	19201	1000001	8/23/2011	\$62.35	532130	AMERICAN SELF STORAGE
34380	19201	1000001	8/23/2011	\$62.50	532130	AMERICAN SELF STORAGE
34396	19201	1000001	8/30/2011	\$450.00	522150	NATIONAL ASSOC OF STATE CONS AGENCIES
34403	19201	1000005	8/31/2011	\$17.00	521140	HARRISON MARK S
34413	19201	1000005	8/31/2011	\$386.10	531150	DEPARTMENT OF CENTRAL SERVICES
34429	19201	1000001	9/6/2011	\$135.21	521310	MIKE ROOKER
34430	19201	1000001	9/8/2011	\$860.95	521310	KARL JETT
34431	19201	1000001	9/8/2011	\$255.30	521310	GEORGE STUNKARD
34432	19201	1000001	9/6/2011	\$355.81	521310	DAN LOWRANCE
34433	19201	1000001	9/6/2011	\$156.06	521310	JAMES GERARD GREGO
34436	19201	1000001	9/7/2011	\$45.00	536130	AUTHORITY ORDER-PCARD
34436	19201	1000001	9/7/2011	\$74.44	536140	AUTHORITY ORDER-PCARD
34436	24500	1000001	9/7/2011	\$420.24	536140	AUTHORITY ORDER-PCARD
34436	40000	1000002	9/7/2011	\$198.00	536150	AUTHORITY ORDER-PCARD
34436	20500	1000004	9/7/2011	\$300.00	531260	AUTHORITY ORDER-PCARD
34437	40000	1000001	9/7/2011	\$202.11	531130	AT & T MOBILITY NATIONAL ACCOUNT LLC
34437	40000	1000002	9/7/2011	\$125.88	531130	AT & T MOBILITY NATIONAL ACCOUNT LLC
34457	19201	1000001	9/13/2011	\$185,035.27	548110	CAPITOL IMPROVEMENT AUTHORITY
34458	19201	1000001	9/14/2011	\$812.51	531130	OFFICE OF STATE FINANCE
34458	19201	1000001	9/14/2011	\$57.50	533130	OFFICE OF STATE FINANCE
34458	19201	1000001	9/14/2011	\$43.50	541230	OFFICE OF STATE FINANCE
34465	19201	1000001	9/13/2011	\$720.00	522150	OKLAHOMA ASSOC OF CONSERVATION DISTRICTS
34465	19201	1000005	9/13/2011	\$240.00	522150	OKLAHOMA ASSOC OF CONSERVATION DISTRICTS
34502	19201	1000001	9/14/2011	\$62.50	532130	AMERICAN SELF STORAGE
34504	19201	1000001	9/14/2011	\$62.35	532130	AMERICAN SELF STORAGE
34505	19201	1000001	9/14/2011	\$62.50	532130	AMERICAN SELF STORAGE
34507	19201	1000001	9/14/2011	\$62.50	532130	AMERICAN SELF STORAGE
34509	19201	1000001	9/14/2011	\$62.50	532130	AMERICAN SELF STORAGE
34510	19201	1000001	9/14/2011	\$83.33	532130	AMERICAN SELF STORAGE
34513	19201	1000001	9/14/2011	\$19.35	536140	EUREKA WATER COMPANY
34541	19201	1000001	9/16/2011	\$33.38	531110	FEDEX FREIGHT EAST INC
34545	19201	1000001	9/16/2011	\$41.67	532130	AMERICAN SELF STORAGE

\$197,422.07 Administration

Watershed Operation & Maintenance

34315	19201	2000001	8/22/2011	\$24.44	531110	FEDEX FREIGHT EAST INC
34400	40000	2000001	8/31/2011	\$136.78	522130	DAYS INN
34404	19201	2000001	8/31/2011	\$1.57	531130	AT&T CORPORATION
34405	19201	2000001	8/31/2011	\$126.02	531130	AT&T CORPORATION
34436	40000	2000001	9/7/2011	\$120.00	531250	AUTHORITY ORDER-PCARD
34436	40000	2000001	9/7/2011	\$3.00	531600	AUTHORITY ORDER-PCARD
34436	19201	2000001	9/7/2011	\$166.26	536140	AUTHORITY ORDER-PCARD
34437	40000	2000001	9/7/2011	\$427.85	531130	AT & T MOBILITY NATIONAL ACCOUNT LLC
34461	19201	2000001	9/13/2011	\$93.50	531370	AMERICAN ELECTRIC POWER
34462	19201	2000001	9/13/2011	\$37.56	531370	AMERICAN ELECTRIC POWER

**OKLAHOMA CONSERVATION COMMISSION
CLAIMS REGISTER BY PROGRAM
FOR THE PERIOD OF AUGUST 22, 2011 THRU SEPTEMBER 18, 2011**

Voucher	Fund Class	Department	Date	Amount	Account	Payee
34463	40000	2000001	9/13/2011	\$1,009.40	533210	KEY EQUIPMENT & SUPPLY CO
34464	40000	2000001	9/13/2011	\$10,637.50	531380	USDA APHIS
34465	19201	2000001	9/13/2011	\$240.00	522150	OKLAHOMA ASSOC OF CONSERVATION DISTRICTS
34467	19201	2000001	9/13/2011	\$164.73	534290	COMDATA NETWORK INC
34468	19201	2000001	9/13/2011	\$91.01	534290	COMDATA NETWORK INC
34514	19201	2000001	9/14/2011	\$77.81	531130	AT&T CORPORATION
34527	40000	2000001	9/15/2011	<u>\$93,234.95</u>	545110	C-P INTEGRATED SERVICES INC

\$106,592.38 Watershed Operation & Maintenance

Watershed Rehabilitation

34441	49000	2000003	9/13/2011	\$63,770.70	515240	TERRACON CONSULTANTS INC
34442	49000	2000003	9/7/2011	\$25,486.67	515240	TERRACON CONSULTANTS INC
34443	49000	2000003	9/7/2011	\$26,190.10	545110	TERRACON CONSULTANTS INC
34444	40000	2000003	9/13/2011	\$7,510.34	531600	DEPARTMENT OF CENTRAL SERVICES
34445	49000	2000003	9/13/2011	\$7,115.84	531600	DEPARTMENT OF CENTRAL SERVICES
34483	49000	2000003	9/13/2011	\$254,675.62	545110	CONTINENTAL CONSTRUCTION CORPORATION
34519	21500	2000003	9/14/2011	\$216,896.55	545110	EARTH BUILDERS LP
34519	40000	2000003	9/14/2011	\$402,807.86	545110	EARTH BUILDERS LP
34525	21500	2000003	9/15/2011	\$886.40	555170 96	SEQUOYAH COUNTY CONSERVATION DISTRICT
34525	40000	2000003	9/15/2011	<u>\$1,646.17</u>	555170 96	SEQUOYAH COUNTY CONSERVATION DISTRICT

\$1,006,986.25 Watershed Rehabilitation

FEMA - Sugar Creek

34437	41500	2000008	9/7/2011	\$30.42	531130	AT & T MOBILITY NATIONAL ACCOUNT LLC
34542	40000	2000008	9/16/2011	<u>\$100.00</u>	555170 88	DEER CREEK CONSERVATION DISTRICT

\$130.42 FEMA - Sugar Creek

Field Services

34296	19201	3000001	8/25/2011	\$658.82	555170 12	DELAWARE CO CONSERVATION DISTRICT
34296	19201	3000001	8/25/2011	\$2,431.60	555170 1	DELAWARE CO CONSERVATION DISTRICT
34346	19201	3000001	8/22/2011	\$1,117.70	555170 9	CENTRAL N CANADIAN RIVER CONSERVATION
34346	19201	3000001	8/22/2011	\$1,917.35	555170 1	CENTRAL N CANADIAN RIVER CONSERVATION
34347	19201	3000001	8/22/2011	\$3,014.20	555170 94	MCINTOSH COUNTY CONSERVATION DISTRICT
34348	19201	3000001	8/22/2011	\$40.00	555170 62	MCINTOSH COUNTY CONSERVATION DISTRICT
34348	19201	3000001	8/22/2011	\$67.56	555170 71	MCINTOSH COUNTY CONSERVATION DISTRICT
34348	19201	3000001	8/22/2011	\$110.00	555170 77	MCINTOSH COUNTY CONSERVATION DISTRICT
34348	19201	3000001	8/22/2011	\$1,389.58	555170 2	MCINTOSH COUNTY CONSERVATION DISTRICT
34349	40000	3000001	8/22/2011	\$125.00	555170 92	BLAINE COUNTY CONSERVATION DISTRICT
34355	19201	3000001	8/23/2011	\$10.70	555170 72	PONTOTOC COUNTY C D
34355	19201	3000001	8/23/2011	\$85.88	555170 71	PONTOTOC COUNTY C D
34355	19201	3000001	8/23/2011	\$269.13	555170 94	PONTOTOC COUNTY C D
34355	19201	3000001	8/23/2011	\$2,064.78	555170 1	PONTOTOC COUNTY C D
34355	19201	3000001	8/23/2011	\$2,140.22	555170 5	PONTOTOC COUNTY C D
34356	19201	3000001	8/23/2011	\$37.33	555170 80	CUSTER COUNTY CONSERVATION DISTRICT
34356	19201	3000001	8/23/2011	\$50.94	555170 71	CUSTER COUNTY CONSERVATION DISTRICT
34356	19201	3000001	8/23/2011	\$137.44	555170 82	CUSTER COUNTY CONSERVATION DISTRICT

**OKLAHOMA CONSERVATION COMMISSION
CLAIMS REGISTER BY PROGRAM
FOR THE PERIOD OF AUGUST 22, 2011 THRU SEPTEMBER 18, 2011**

Voucher	Fund Class	Department	Date	Amount	Account	Payee
34356	19201	3000001	8/23/2011	\$2,320.74	555170	5 CUSTER COUNTY CONSERVATION DISTRICT
34356	19201	3000001	8/23/2011	\$2,363.14	555170	2 CUSTER COUNTY CONSERVATION DISTRICT
34357	19201	3000001	8/23/2011	\$74.82	555170	36 LINCOLN COUNTY CONSERVATION DISTRICT
34357	19201	3000001	8/23/2011	\$538.26	555170	94 LINCOLN COUNTY CONSERVATION DISTRICT
34357	19201	3000001	8/23/2011	\$1,951.54	555170	1 LINCOLN COUNTY CONSERVATION DISTRICT
34357	19201	3000001	8/23/2011	\$2,257.99	555170	5 LINCOLN COUNTY CONSERVATION DISTRICT
34384	40000	3000001	8/23/2011	\$700.00	555170	86 NORTH CADDO CONSERVATION DISTRICT
34391	19201	3000001	8/26/2011	\$25.00	555170	70 JACKSON COUNTY CONSERVATION DIST
34391	19201	3000001	8/26/2011	\$65.10	555170	71 JACKSON COUNTY CONSERVATION DIST
34391	19201	3000001	8/26/2011	\$111.68	555170	72 JACKSON COUNTY CONSERVATION DIST
34391	19201	3000001	8/26/2011	\$2,329.79	555170	2 JACKSON COUNTY CONSERVATION DIST
34391	19201	3000001	8/26/2011	\$3,237.55	555170	5 JACKSON COUNTY CONSERVATION DIST
34393	19201	3000001	8/26/2011	\$76.20	555170	71 TULSA COUNTY CONSERVATION DISTRICT
34393	19201	3000001	8/26/2011	\$88.00	555170	72 TULSA COUNTY CONSERVATION DISTRICT
34393	19201	3000001	8/26/2011	\$149.97	555170	69 TULSA COUNTY CONSERVATION DISTRICT
34393	19201	3000001	8/26/2011	\$2,037.06	555170	11 TULSA COUNTY CONSERVATION DISTRICT
34393	19201	3000001	8/26/2011	\$2,194.41	555170	1 TULSA COUNTY CONSERVATION DISTRICT
34395	19201	3000001	8/29/2011	\$971.38	555170	80 ELLIS COUNTY CONSERVATION DISTRICT
34395	19201	3000001	8/29/2011	\$1,862.22	555170	5 ELLIS COUNTY CONSERVATION DISTRICT
34395	19201	3000001	8/29/2011	\$1,965.40	555170	2 ELLIS COUNTY CONSERVATION DISTRICT
34399	19201	3000001	8/30/2011	\$36.00	555170	71 HUGHES COUNTY CONSERVATION DIST
34399	19201	3000001	8/30/2011	\$174.00	555170	73 HUGHES COUNTY CONSERVATION DIST
34399	19201	3000001	8/30/2011	\$620.00	555170	62 HUGHES COUNTY CONSERVATION DIST
34399	19201	3000001	8/30/2011	\$2,284.16	555170	7 HUGHES COUNTY CONSERVATION DIST
34399	19201	3000001	8/30/2011	\$2,602.52	555170	2 HUGHES COUNTY CONSERVATION DIST
34407	40000	3000003	8/31/2011	\$60.00	533140	FUZZELLS BUSINESS EQUIPMENT
34412	19201	3000001	8/31/2011	\$73.54	555170	71 SEMINOLE COUNTY CONSERVATION DISTRICT
34412	19201	3000001	8/31/2011	\$135.00	555170	62 SEMINOLE COUNTY CONSERVATION DISTRICT
34412	19201	3000001	8/31/2011	\$2,733.54	555170	3 SEMINOLE COUNTY CONSERVATION DISTRICT
34414	19201	3000001	9/6/2011	\$2,798.90	555170	94 VALLIANT CONSERVATION DISTRICT
34415	19201	3000001	9/6/2011	\$87.28	555170	82 JEFFERSON COUNTY CONSERVATION DIST
34415	19201	3000001	9/6/2011	\$158.01	555170	71 JEFFERSON COUNTY CONSERVATION DIST
34415	19201	3000001	9/6/2011	\$733.81	555170	80 JEFFERSON COUNTY CONSERVATION DIST
34415	19201	3000001	9/6/2011	\$2,168.74	555170	7 JEFFERSON COUNTY CONSERVATION DIST
34415	19201	3000001	9/6/2011	\$2,347.23	555170	2 JEFFERSON COUNTY CONSERVATION DIST
34416	19201	3000001	9/6/2011	\$245.85	555170	80 CIMARRON VALLEY CONSERVATION DISTRICT
34416	19201	3000001	9/6/2011	\$450.00	555170	75 CIMARRON VALLEY CONSERVATION DISTRICT
34416	19201	3000001	9/6/2011	\$2,168.35	555170	1 CIMARRON VALLEY CONSERVATION DISTRICT
34416	19201	3000001	9/6/2011	\$2,971.74	555170	5 CIMARRON VALLEY CONSERVATION DISTRICT
34417	19201	3000001	9/6/2011	\$20.57	555170	72 CIMARRON COUNTY CONSERVATION DISTRICT
34417	19201	3000001	9/6/2011	\$90.38	555170	71 CIMARRON COUNTY CONSERVATION DISTRICT
34417	19201	3000001	9/6/2011	\$97.14	555170	20 CIMARRON COUNTY CONSERVATION DISTRICT
34417	19201	3000001	9/6/2011	\$170.00	555170	62 CIMARRON COUNTY CONSERVATION DISTRICT
34417	19201	3000001	9/6/2011	\$2,662.69	555170	3 CIMARRON COUNTY CONSERVATION DISTRICT
34417	19201	3000001	9/6/2011	\$3,111.03	555170	9 CIMARRON COUNTY CONSERVATION DISTRICT
34418	19201	3000001	9/6/2011	\$14.00	555170	82 MCCLAIN COUNTY CONSERVATION DISTRICT
34418	19201	3000001	9/6/2011	\$99.65	555170	72 MCCLAIN COUNTY CONSERVATION DISTRICT
34418	19201	3000001	9/6/2011	\$108.81	555170	71 MCCLAIN COUNTY CONSERVATION DISTRICT
34418	19201	3000001	9/6/2011	\$116.55	555170	69 MCCLAIN COUNTY CONSERVATION DISTRICT
34418	19201	3000001	9/6/2011	\$1,933.89	555170	7 MCCLAIN COUNTY CONSERVATION DISTRICT
34418	19201	3000001	9/6/2011	\$2,705.55	555170	2 MCCLAIN COUNTY CONSERVATION DISTRICT
34419	19201	3000001	9/6/2011	\$54.00	555170	72 GRADY COUNTY CONSERVATION DIST

**OKLAHOMA CONSERVATION COMMISSION
CLAIMS REGISTER BY PROGRAM
FOR THE PERIOD OF AUGUST 22, 2011 THRU SEPTEMBER 18, 2011**

Voucher	Fund Class	Department	Date	Amount	Account	Payee
34419	19201	3000001	9/6/2011	\$125.01	555170 71	GRADY COUNTY CONSERVATION DIST
34419	19201	3000001	9/6/2011	\$2,254.86	555170 6	GRADY COUNTY CONSERVATION DIST
34419	19201	3000001	9/6/2011	\$2,358.62	555170 7	GRADY COUNTY CONSERVATION DIST
34419	19201	3000001	9/6/2011	\$3,049.77	555170 3	GRADY COUNTY CONSERVATION DIST
34420	19201	3000001	9/6/2011	\$88.00	555170 72	TALIHINA CONSERVATION DISTRICT
34420	19201	3000001	9/6/2011	\$300.00	555170 92	TALIHINA CONSERVATION DISTRICT
34420	19201	3000001	9/6/2011	\$458.59	555170 94	TALIHINA CONSERVATION DISTRICT
34420	19201	3000001	9/6/2011	\$794.00	555170 84	TALIHINA CONSERVATION DISTRICT
34420	19201	3000001	9/6/2011	\$1,947.90	555170 9	TALIHINA CONSERVATION DISTRICT
34420	19201	3000001	9/6/2011	\$3,657.25	555170 5	TALIHINA CONSERVATION DISTRICT
34421	19201	3000001	9/6/2011	\$61.73	555170 71	WAGONER COUNTY CONSERVATION DIST NO 22
34421	40000	3000001	9/6/2011	\$139.83	555170 86	WAGONER COUNTY CONSERVATION DIST NO 22
34421	19201	3000001	9/6/2011	\$3,271.11	555170 3	WAGONER COUNTY CONSERVATION DIST NO 22
34422	19201	3000001	9/6/2011	\$32.96	555170 81	NORTH CADDO CONSERVATION DISTRICT
34422	19201	3000001	9/6/2011	\$149.51	555170 71	NORTH CADDO CONSERVATION DISTRICT
34422	19201	3000001	9/6/2011	\$186.32	555170 80	NORTH CADDO CONSERVATION DISTRICT
34422	19201	3000001	9/6/2011	\$1,535.09	555170 12	NORTH CADDO CONSERVATION DISTRICT
34422	19201	3000001	9/6/2011	\$1,942.01	555170 1	NORTH CADDO CONSERVATION DISTRICT
34423	19201	3000001	9/6/2011	\$51.78	555170 82	KONAWA CONSERVATION DISTRICT
34423	19201	3000001	9/6/2011	\$1,496.34	555170 12	KONAWA CONSERVATION DISTRICT
34423	19201	3000001	9/6/2011	\$2,440.75	555170 6	KONAWA CONSERVATION DISTRICT
34423	19201	3000001	9/6/2011	\$2,499.02	555170 2	KONAWA CONSERVATION DISTRICT
34424	19201	3000001	9/6/2011	\$48.00	555170 71	ATOKA COUNTY CONSERVATION DISTRICT
34424	19201	3000001	9/6/2011	\$1,895.29	555170 7	ATOKA COUNTY CONSERVATION DISTRICT
34424	19201	3000001	9/6/2011	\$2,451.41	555170 2	ATOKA COUNTY CONSERVATION DISTRICT
34425	19201	3000001	9/6/2011	\$96.00	555170 71	SEQUOYAH COUNTY CONSERVATION DISTRICT
34425	19201	3000001	9/6/2011	\$368.07	555170 84	SEQUOYAH COUNTY CONSERVATION DISTRICT
34425	19201	3000001	9/6/2011	\$2,663.78	555170 2	SEQUOYAH COUNTY CONSERVATION DISTRICT
34426	19201	3000001	9/6/2011	\$45.60	555170 60	KINGFISHER COUNTY CONSERVATION DISTRICT
34426	19201	3000001	9/6/2011	\$77.07	555170 71	KINGFISHER COUNTY CONSERVATION DISTRICT
34426	19201	3000001	9/6/2011	\$166.41	555170 79	KINGFISHER COUNTY CONSERVATION DISTRICT
34426	19201	3000001	9/6/2011	\$227.00	555170 83	KINGFISHER COUNTY CONSERVATION DISTRICT
34426	19201	3000001	9/6/2011	\$525.00	555170 28	KINGFISHER COUNTY CONSERVATION DISTRICT
34426	19201	3000001	9/6/2011	\$2,533.30	555170 5	KINGFISHER COUNTY CONSERVATION DISTRICT
34426	19201	3000001	9/6/2011	\$2,833.52	555170 2	KINGFISHER COUNTY CONSERVATION DISTRICT
34427	19201	3000001	9/6/2011	\$15.00	555170 60	CREEK COUNTY CONSERVATION DISTRICT
34427	19201	3000001	9/6/2011	\$45.00	555170 76	CREEK COUNTY CONSERVATION DISTRICT
34427	19201	3000001	9/6/2011	\$58.12	555170 71	CREEK COUNTY CONSERVATION DISTRICT
34427	19201	3000001	9/6/2011	\$88.00	555170 72	CREEK COUNTY CONSERVATION DISTRICT
34427	19201	3000001	9/6/2011	\$1,858.67	555170 9	CREEK COUNTY CONSERVATION DISTRICT
34427	19201	3000001	9/6/2011	\$2,045.35	555170 94	CREEK COUNTY CONSERVATION DISTRICT
34427	19201	3000001	9/6/2011	\$2,594.69	555170 2	CREEK COUNTY CONSERVATION DISTRICT
34428	19201	3000001	9/6/2011	\$56.82	555170 71	ROGERS COUNTY CONSERVATION DISTRICT
34428	19201	3000001	9/6/2011	\$101.94	555170 20	ROGERS COUNTY CONSERVATION DISTRICT
34428	19201	3000001	9/6/2011	\$325.00	555170 92	ROGERS COUNTY CONSERVATION DISTRICT
34428	19201	3000001	9/6/2011	\$444.81	555170 24	ROGERS COUNTY CONSERVATION DISTRICT
34428	19201	3000001	9/6/2011	\$2,720.27	555170 1	ROGERS COUNTY CONSERVATION DISTRICT
34428	19201	3000001	9/6/2011	\$3,605.16	555170 12	ROGERS COUNTY CONSERVATION DISTRICT
34428	19201	3000001	9/6/2011	\$3,777.42	555170 11	ROGERS COUNTY CONSERVATION DISTRICT
34453	19201	3000001	9/7/2011	\$61.44	555170 80	BRYAN CONSERVATION DISTRICT
34453	19201	3000001	9/7/2011	\$80.59	555170 71	BRYAN CONSERVATION DISTRICT
34453	19201	3000001	9/7/2011	\$1,953.66	555170 1	BRYAN CONSERVATION DISTRICT

**OKLAHOMA CONSERVATION COMMISSION
CLAIMS REGISTER BY PROGRAM
FOR THE PERIOD OF AUGUST 22, 2011 THRU SEPTEMBER 18, 2011**

Voucher	Fund Class	Department	Date	Amount	Account	Payee
34453	19201	3000001	9/7/2011	\$2,080.43	555170	9 BRYAN CONSERVATION DISTRICT
34454	19201	3000001	9/7/2011	\$15.50	555170	20 KAY COUNTY CONSERVATION DISTRICT
34454	19201	3000001	9/7/2011	\$62.69	555170	71 KAY COUNTY CONSERVATION DISTRICT
34454	19201	3000001	9/7/2011	\$75.00	555170	76 KAY COUNTY CONSERVATION DISTRICT
34454	19201	3000001	9/7/2011	\$91.58	555170	69 KAY COUNTY CONSERVATION DISTRICT
34454	19201	3000001	9/7/2011	\$164.00	555170	62 KAY COUNTY CONSERVATION DISTRICT
34454	19201	3000001	9/7/2011	\$350.00	555170	92 KAY COUNTY CONSERVATION DISTRICT
34454	19201	3000001	9/7/2011	\$355.00	555170	61 KAY COUNTY CONSERVATION DISTRICT
34454	19201	3000001	9/7/2011	\$915.03	555170	94 KAY COUNTY CONSERVATION DISTRICT
34454	19201	3000001	9/7/2011	\$2,354.37	555170	7 KAY COUNTY CONSERVATION DISTRICT
34454	19201	3000001	9/7/2011	\$2,657.79	555170	5 KAY COUNTY CONSERVATION DISTRICT
34454	19201	3000001	9/7/2011	\$2,901.25	555170	2 KAY COUNTY CONSERVATION DISTRICT
34455	19201	3000001	9/7/2011	\$2,071.36	555170	1 NORTH FORK OF RED RIVER CONSERVATION
34455	19201	3000001	9/7/2011	\$2,402.41	555170	5 NORTH FORK OF RED RIVER CONSERVATION
34456	19201	3000001	9/7/2011	\$123.43	555170	71 PAYNE COUNTY CONSERVATION DISTRICT
34456	40000	3000001	9/7/2011	\$290.28	555170	88 PAYNE COUNTY CONSERVATION DISTRICT
34456	19201	3000001	9/7/2011	\$1,965.18	555170	1 PAYNE COUNTY CONSERVATION DISTRICT
34456	19201	3000001	9/7/2011	\$2,127.78	555170	5 PAYNE COUNTY CONSERVATION DISTRICT
34470	19201	3000001	9/13/2011	\$240.00	555170	74 NOWATA COUNTY CONSERVATION DISTRICT
34470	19201	3000001	9/13/2011	\$462.35	555170	12 NOWATA COUNTY CONSERVATION DISTRICT
34470	19201	3000001	9/13/2011	\$2,914.15	555170	5 NOWATA COUNTY CONSERVATION DISTRICT
34471	40000	3000001	9/13/2011	\$139.83	555170	86 KIOWA COUNTY CONSERVATION DIST #76
34471	19201	3000001	9/13/2011	\$2,064.78	555170	1 KIOWA COUNTY CONSERVATION DIST #76
34471	19201	3000001	9/13/2011	\$2,191.01	555170	5 KIOWA COUNTY CONSERVATION DIST #76
34471	19201	3000001	9/13/2011	\$2,880.68	555170	6 KIOWA COUNTY CONSERVATION DIST #76
34472	19201	3000001	9/13/2011	\$2,387.51	555170	2 LEFLORE COUNTY CONSERVATION DISTRICT
34472	19201	3000001	9/13/2011	\$3,765.44	555170	5 LEFLORE COUNTY CONSERVATION DISTRICT
34473	40000	3000001	9/13/2011	\$139.83	555170	86 TILLMAN COUNTY CONSERVATION DISTRICT
34473	19201	3000001	9/13/2011	\$2,414.51	555170	2 TILLMAN COUNTY CONSERVATION DISTRICT
34474	19201	3000001	9/13/2011	\$40.39	555170	71 MURRAY COUNTY CONSERVATION DISTRICT
34474	19201	3000001	9/13/2011	\$2,197.14	555170	6 MURRAY COUNTY CONSERVATION DISTRICT
34474	19201	3000001	9/13/2011	\$2,550.44	555170	2 MURRAY COUNTY CONSERVATION DISTRICT
34475	19201	3000001	9/13/2011	\$103.79	555170	69 MARSHALL COUNTY CONSERVATION DISTRICT
34475	19201	3000001	9/13/2011	\$157.09	555170	71 MARSHALL COUNTY CONSERVATION DISTRICT
34475	19201	3000001	9/13/2011	\$1,967.75	555170	1 MARSHALL COUNTY CONSERVATION DISTRICT
34475	19201	3000001	9/13/2011	\$2,249.71	555170	9 MARSHALL COUNTY CONSERVATION DISTRICT
34476	19201	3000001	9/13/2011	\$70.51	555170	71 OKLAHOMA COUNTY CONSERVATION DISTRICT
34476	19201	3000001	9/13/2011	\$1,631.97	555170	12 OKLAHOMA COUNTY CONSERVATION DISTRICT
34476	19201	3000001	9/13/2011	\$2,154.89	555170	2 OKLAHOMA COUNTY CONSERVATION DISTRICT
34477	19201	3000001	9/13/2011	\$8.80	555170	72 MAYES COUNTY CONSERVATION DISTRICT
34477	19201	3000001	9/13/2011	\$82.35	555170	20 MAYES COUNTY CONSERVATION DISTRICT
34477	19201	3000001	9/13/2011	\$218.68	555170	84 MAYES COUNTY CONSERVATION DISTRICT
34477	19201	3000001	9/13/2011	\$2,135.39	555170	3 MAYES COUNTY CONSERVATION DISTRICT
34478	19201	3000001	9/13/2011	\$2,958.45	555170	9 ADAIR COUNTY CONSERVATION DISTRICT #67
34478	19201	3000001	9/13/2011	\$3,072.45	555170	3 ADAIR COUNTY CONSERVATION DISTRICT #67
34478	19201	3000001	9/13/2011	\$3,660.10	555170	94 ADAIR COUNTY CONSERVATION DISTRICT #67
34479	19201	3000001	9/13/2011	\$2,139.59	555170	5 DEWEY COUNTY CONSERVATION DISTRICT
34479	19201	3000001	9/13/2011	\$2,340.16	555170	2 DEWEY COUNTY CONSERVATION DISTRICT
34480	19201	3000001	9/13/2011	\$132.00	555170	72 MAJOR COUNTY CONSERVATION DISTRICT
34480	19201	3000001	9/13/2011	\$2,684.97	555170	2 MAJOR COUNTY CONSERVATION DISTRICT
34480	19201	3000001	9/13/2011	\$2,764.12	555170	9 MAJOR COUNTY CONSERVATION DISTRICT
34481	19201	3000001	9/13/2011	\$9.11	555170	72 ARBUCKLE CONSERVATION DISTRICT

**OKLAHOMA CONSERVATION COMMISSION
CLAIMS REGISTER BY PROGRAM
FOR THE PERIOD OF AUGUST 22, 2011 THRU SEPTEMBER 18, 2011**

Voucher	Fund Class	Department	Date	Amount	Account	Payee
34481	19201	3000001	9/13/2011	\$73.92	555170 71	ARBUCKLE CONSERVATION DISTRICT
34481	19201	3000001	9/13/2011	\$3,241.36	555170 3	ARBUCKLE CONSERVATION DISTRICT
34482	19201	3000001	9/13/2011	\$1,604.33	555170 5	WOODS COUNTY CONSERVATION DISTRICT
34482	19201	3000001	9/13/2011	\$1,636.80	555170 1	WOODS COUNTY CONSERVATION DISTRICT
34484	19201	3000001	9/15/2011	\$19.98	555170 69	LOVE COUNTY CONSERVATION DISTRICT
34484	19201	3000001	9/15/2011	\$59.02	555170 71	LOVE COUNTY CONSERVATION DISTRICT
34484	19201	3000001	9/15/2011	\$85.00	555170 20	LOVE COUNTY CONSERVATION DISTRICT
34484	19201	3000001	9/15/2011	\$275.00	555170 92	LOVE COUNTY CONSERVATION DISTRICT
34484	19201	3000001	9/15/2011	\$2,348.17	555170 7	LOVE COUNTY CONSERVATION DISTRICT
34484	19201	3000001	9/15/2011	\$3,160.78	555170 5	LOVE COUNTY CONSERVATION DISTRICT
34484	19201	3000001	9/15/2011	\$4,951.90	555170 94	LOVE COUNTY CONSERVATION DISTRICT
34485	19201	3000001	9/14/2011	\$6.78	555170 20	OTTAWA COUNTY CONSERVATION DISTRICT
34485	19201	3000001	9/14/2011	\$29.95	555170 67	OTTAWA COUNTY CONSERVATION DISTRICT
34485	19201	3000001	9/14/2011	\$61.72	555170 71	OTTAWA COUNTY CONSERVATION DISTRICT
34485	19201	3000001	9/14/2011	\$317.79	555170 69	OTTAWA COUNTY CONSERVATION DISTRICT
34485	19201	3000001	9/14/2011	\$800.00	555170 62	OTTAWA COUNTY CONSERVATION DISTRICT
34485	19201	3000001	9/14/2011	\$2,665.63	555170 2	OTTAWA COUNTY CONSERVATION DISTRICT
34486	19201	3000001	9/14/2011	\$89.27	555170 30	TEXAS COUNTY CONSERVATION DISTRICT
34486	19201	3000001	9/14/2011	\$193.67	555170 71	TEXAS COUNTY CONSERVATION DISTRICT
34486	19201	3000001	9/14/2011	\$1,781.42	555170 9	TEXAS COUNTY CONSERVATION DISTRICT
34486	19201	3000001	9/14/2011	\$2,064.78	555170 1	TEXAS COUNTY CONSERVATION DISTRICT
34487	40000	3000001	9/14/2011	\$139.83	555170 86	WOODWARD COUNTY CONSERVATION DISTRICT
34487	19201	3000001	9/14/2011	\$218.54	555170 27	WOODWARD COUNTY CONSERVATION DISTRICT
34487	19201	3000001	9/14/2011	\$427.63	555170 38	WOODWARD COUNTY CONSERVATION DISTRICT
34487	19201	3000001	9/14/2011	\$5,139.22	555170 12	WOODWARD COUNTY CONSERVATION DISTRICT
34488	19201	3000001	9/14/2011	\$46.96	555170 20	LATIMER COUNTY CONSERVATION DISTRICT
34488	19201	3000001	9/14/2011	\$88.00	555170 72	LATIMER COUNTY CONSERVATION DISTRICT
34488	19201	3000001	9/14/2011	\$300.00	555170 92	LATIMER COUNTY CONSERVATION DISTRICT
34488	19201	3000001	9/14/2011	\$673.89	555170 94	LATIMER COUNTY CONSERVATION DISTRICT
34488	19201	3000001	9/14/2011	\$2,170.03	555170 9	LATIMER COUNTY CONSERVATION DISTRICT
34489	19201	3000001	9/14/2011	\$22.78	555170 81	UPPER WASHITA CONSERVATION DISTRICT
34489	19201	3000001	9/14/2011	\$53.00	555170 82	UPPER WASHITA CONSERVATION DISTRICT
34489	19201	3000001	9/14/2011	\$132.00	555170 72	UPPER WASHITA CONSERVATION DISTRICT
34489	19201	3000001	9/14/2011	\$197.58	555170 71	UPPER WASHITA CONSERVATION DISTRICT
34489	19201	3000001	9/14/2011	\$494.53	555170 79	UPPER WASHITA CONSERVATION DISTRICT
34489	19201	3000001	9/14/2011	\$2,168.02	555170 7	UPPER WASHITA CONSERVATION DISTRICT
34489	19201	3000001	9/14/2011	\$2,988.77	555170 5	UPPER WASHITA CONSERVATION DISTRICT
34490	19201	3000001	9/14/2011	\$44.00	555170 72	VALLIANT CONSERVATION DISTRICT
34490	19201	3000001	9/14/2011	\$86.18	555170 71	VALLIANT CONSERVATION DISTRICT
34490	19201	3000001	9/14/2011	\$100.00	555170 62	VALLIANT CONSERVATION DISTRICT
34490	19201	3000001	9/14/2011	\$2,371.25	555170 7	VALLIANT CONSERVATION DISTRICT
34490	19201	3000001	9/14/2011	\$2,744.08	555170 2	VALLIANT CONSERVATION DISTRICT
34491	19201	3000001	9/14/2011	\$45.85	555170 71	GARFIELD CO CONSERVATION DISTRICT
34491	19201	3000001	9/14/2011	\$83.86	555170 80	GARFIELD CO CONSERVATION DISTRICT
34491	19201	3000001	9/14/2011	\$485.00	555170 61	GARFIELD CO CONSERVATION DISTRICT
34491	19201	3000001	9/14/2011	\$2,365.82	555170 5	GARFIELD CO CONSERVATION DISTRICT
34501	19201	3000001	9/14/2011	\$62.00	555170 71	COMANCHE COUNTY CONSERVATION DISTRICT
34501	40000	3000001	9/14/2011	\$139.83	555170 86	COMANCHE COUNTY CONSERVATION DISTRICT
34501	19201	3000001	9/14/2011	\$2,392.82	555170 1	COMANCHE COUNTY CONSERVATION DISTRICT
34501	19201	3000001	9/14/2011	\$2,733.42	555170 5	COMANCHE COUNTY CONSERVATION DISTRICT
34503	19201	3000001	9/14/2011	\$42.18	555170 71	KIAMICHI CONSERVATION DISTRICT
34503	19201	3000001	9/14/2011	\$458.59	555170 94	KIAMICHI CONSERVATION DISTRICT

**OKLAHOMA CONSERVATION COMMISSION
CLAIMS REGISTER BY PROGRAM
FOR THE PERIOD OF AUGUST 22, 2011 THRU SEPTEMBER 18, 2011**

Voucher	Fund Class	Department	Date	Amount	Account	Payee
34503	19201	3000001	9/14/2011	\$2,047.13	555170	1 KIAMICHI CONSERVATION DISTRICT
34503	19201	3000001	9/14/2011	\$2,796.94	555170	5 KIAMICHI CONSERVATION DISTRICT
34506	19201	3000001	9/14/2011	\$12.60	555170	72 OSAGE COUNTY CONSERVATION DISTRICT
34506	19201	3000001	9/14/2011	\$77.76	555170	20 OSAGE COUNTY CONSERVATION DISTRICT
34506	19201	3000001	9/14/2011	\$100.00	555170	71 OSAGE COUNTY CONSERVATION DISTRICT
34506	19201	3000001	9/14/2011	\$2,492.00	555170	5 OSAGE COUNTY CONSERVATION DISTRICT
34506	19201	3000001	9/14/2011	\$2,774.78	555170	2 OSAGE COUNTY CONSERVATION DISTRICT
34508	19201	3000001	9/14/2011	\$915.03	555170	94 CRAIG COUNTY CONSERVATION DISTRICT
34508	19201	3000001	9/14/2011	\$2,249.91	555170	7 CRAIG COUNTY CONSERVATION DISTRICT
34508	19201	3000001	9/14/2011	\$2,909.06	555170	5 CRAIG COUNTY CONSERVATION DISTRICT
34511	19201	3000001	9/14/2011	\$480.00	555170	80 OKFUSKEE COUNTY CONSERVATION DISTRICT
34511	19201	3000001	9/14/2011	\$1,513.29	555170	9 OKFUSKEE COUNTY CONSERVATION DISTRICT
34511	19201	3000001	9/14/2011	\$2,600.08	555170	2 OKFUSKEE COUNTY CONSERVATION DISTRICT
34515	19201	3000001	9/14/2011	\$7.95	555170	72 CLEVELAND COUNTY CONSERVATION DISTRICT
34515	19201	3000001	9/14/2011	\$45.00	555170	74 CLEVELAND COUNTY CONSERVATION DISTRICT
34515	19201	3000001	9/14/2011	\$46.31	555170	69 CLEVELAND COUNTY CONSERVATION DISTRICT
34515	19201	3000001	9/14/2011	\$125.00	555170	68 CLEVELAND COUNTY CONSERVATION DISTRICT
34515	19201	3000001	9/14/2011	\$2,045.35	555170	94 CLEVELAND COUNTY CONSERVATION DISTRICT
34515	19201	3000001	9/14/2011	\$2,839.30	555170	2 CLEVELAND COUNTY CONSERVATION DISTRICT
34522	19201	3000003	9/14/2011	\$425.82	522110	OKLAHOMA TURNPIKE AUTHORITY
34531	19201	3000001	9/15/2011	\$32.31	555170	81 GREER COUNTY CONSERVATION DIST
34531	19201	3000001	9/15/2011	\$132.61	555170	71 GREER COUNTY CONSERVATION DIST
34531	19201	3000001	9/15/2011	\$278.70	555170	80 GREER COUNTY CONSERVATION DIST
34531	19201	3000001	9/15/2011	\$472.23	555170	5 GREER COUNTY CONSERVATION DIST
34531	19201	3000001	9/15/2011	\$2,119.30	555170	1 GREER COUNTY CONSERVATION DIST
34531	19201	3000001	9/15/2011	\$6,500.24	555170	95 GREER COUNTY CONSERVATION DIST
34532	19201	3000001	9/15/2011	\$131.91	555170	12 DEER CREEK CONSERVATION DISTRICT
34532	19201	3000001	9/15/2011	\$350.00	555170	92 DEER CREEK CONSERVATION DISTRICT
34532	19201	3000001	9/15/2011	\$1,936.34	555170	84 DEER CREEK CONSERVATION DISTRICT
34532	19201	3000001	9/15/2011	\$2,138.26	555170	11 DEER CREEK CONSERVATION DISTRICT
34532	19201	3000001	9/15/2011	\$2,529.37	555170	5 DEER CREEK CONSERVATION DISTRICT
34533	19201	3000001	9/15/2011	\$1,452.49	555170	9 CENTRAL N CANADIAN RIVER CONSERVATION
34533	19201	3000001	9/15/2011	\$1,579.00	555170	84 CENTRAL N CANADIAN RIVER CONSERVATION
34533	19201	3000001	9/15/2011	\$1,917.35	555170	1 CENTRAL N CANADIAN RIVER CONSERVATION
34534	19201	3000001	9/15/2011	\$40.66	555170	80 HARMON COUNTY CONSERVATION DISTRICT
34534	19201	3000001	9/15/2011	\$96.00	555170	72 HARMON COUNTY CONSERVATION DISTRICT
34534	19201	3000001	9/15/2011	\$116.41	555170	20 HARMON COUNTY CONSERVATION DISTRICT
34534	19201	3000001	9/15/2011	\$156.82	555170	71 HARMON COUNTY CONSERVATION DISTRICT
34534	19201	3000001	9/15/2011	\$292.14	555170	26 HARMON COUNTY CONSERVATION DISTRICT
34534	19201	3000001	9/15/2011	\$2,162.47	555170	1 HARMON COUNTY CONSERVATION DISTRICT
34534	19201	3000001	9/15/2011	\$2,381.19	555170	5 HARMON COUNTY CONSERVATION DISTRICT
34535	19201	3000001	9/15/2011	\$107.51	555170	71 CANEY VALLEY CONSERVATION DISTRICT
34535	19201	3000001	9/15/2011	\$2,065.41	555170	1 CANEY VALLEY CONSERVATION DISTRICT
34535	19201	3000001	9/15/2011	\$2,368.15	555170	5 CANEY VALLEY CONSERVATION DISTRICT
34536	19201	3000001	9/15/2011	\$2,119.16	555170	9 BLAINE COUNTY CONSERVATION DISTRICT
34536	19201	3000001	9/15/2011	\$2,170.99	555170	1 BLAINE COUNTY CONSERVATION DISTRICT
34537	19201	3000001	9/15/2011	\$800.00	555170	61 CHEROKEE COUNTY CONSERVATION DISTRICT
34537	19201	3000001	9/15/2011	\$2,139.55	555170	11 CHEROKEE COUNTY CONSERVATION DISTRICT
34538	19201	3000001	9/15/2011	\$30.00	555170	82 CUSTER COUNTY CONSERVATION DISTRICT
34538	19201	3000001	9/15/2011	\$36.82	555170	80 CUSTER COUNTY CONSERVATION DISTRICT
34538	19201	3000001	9/15/2011	\$44.00	555170	72 CUSTER COUNTY CONSERVATION DISTRICT
34538	19201	3000001	9/15/2011	\$51.75	555170	71 CUSTER COUNTY CONSERVATION DISTRICT

**OKLAHOMA CONSERVATION COMMISSION
CLAIMS REGISTER BY PROGRAM
FOR THE PERIOD OF AUGUST 22, 2011 THRU SEPTEMBER 18, 2011**

Voucher	Fund Class	Department	Date	Amount	Account	Payee
34538	19201	3000001	9/15/2011	\$915.03	555170 94	CUSTER COUNTY CONSERVATION DISTRICT
34538	19201	3000001	9/15/2011	\$2,320.74	555170 5	CUSTER COUNTY CONSERVATION DISTRICT
34538	19201	3000001	9/15/2011	<u>\$2,363.14</u>	555170 2	CUSTER COUNTY CONSERVATION DISTRICT

\$339,291.56 Field Services

Conservation Education

34436	19201	3000004	9/7/2011	\$10.11	536140	AUTHORITY ORDER-PCARD
34436	19201	3000004	9/7/2011	\$451.80	536140	AUTHORITY ORDER-PCARD
34436	19201	3000004	9/7/2011	\$2,777.70	536190	AUTHORITY ORDER-PCARD
34465	19201	3000004	9/13/2011	<u>\$240.00</u>	522150	OKLAHOMA ASSOC OF CONSERVATION DISTRICTS

\$3,479.61 Conservation Education

District Services

34392	19201	3000005	8/26/2011	\$180.00	555170 99	TULSA COUNTY CONSERVATION DISTRICT
34396	40000	3000005	8/30/2011	\$450.00	522150	NATIONAL ASSOC OF STATE CONS AGENCIES
34436	19201	3000005	9/7/2011	\$11.07	536140	AUTHORITY ORDER-PCARD
34465	40000	3000005	9/13/2011	<u>\$240.00</u>	522150	OKLAHOMA ASSOC OF CONSERVATION DISTRICTS

\$881.07 District Services

Abandoned Mine Land Reclamation

34381	40000	4000005	8/23/2011	\$28.00	533120	WILLIAMS CHEVROLET
34406	40000	4000005	8/31/2011	\$3,500.00	515450	EAGLE ENVIRONMENTAL CONSULTING INC
34408	40000	4000005	8/31/2011	\$69,616.81	545110	THOMAS CONSTRUCTION INC
34434	40000	4000005	9/6/2011	\$434.01	521110	SPURLOCK DORSEY E
34435	40000	4000005	9/6/2011	\$987.90	521110	GREEN PRESTON L
34436	40000	4000005	9/7/2011	\$19.32	535210	AUTHORITY ORDER-PCARD
34436	40000	4000005	9/7/2011	\$218.47	541120	AUTHORITY ORDER-PCARD
34437	40000	4000005	9/7/2011	\$146.62	531130	AT & T MOBILITY NATIONAL ACCOUNT LLC
34459	40000	4000005	9/13/2011	\$32,975.10	545110	GOAD & SONS CONSTRUCTION LLC
34467	40000	4000005	9/13/2011	\$627.34	534290	COMDATA NETWORK INC
34468	40000	4000001	9/13/2011	\$43.94	534290	COMDATA NETWORK INC
34468	40000	4000005	9/13/2011	\$552.38	534290	COMDATA NETWORK INC
34498	40000	4000005	9/14/2011	\$225.89	521110	NUTTLE CHARLES E
34499	40000	4000005	9/14/2011	\$543.35	521110	WEAVER WILLIAM C
34526	40000	4000005	9/15/2011	\$54.99	555170 88	ROGERS COUNTY CONSERVATION DISTRICT
34539	40000	4000005	9/16/2011	\$9,015.12	515240	COBB ENGINEERING COMPANY
34540	40000	4000005	9/16/2011	\$30,449.30	545110	LLG CONST INC
34544	40000	4000005	9/16/2011	<u>\$40.10</u>	531160	STIGLER NEWS SENTINEL

\$149,478.64 Abandoned Mine Land Reclamation

Water Quality

34310	40000	5000001	8/22/2011	\$50,762.00	515290	DEPARTMENT OF AGRICULTURE FOOD AND FORES
34313	40000	5000001	8/22/2011	\$300.00	555170 88	BLAINE COUNTY CONSERVATION DISTRICT
34314	40000	5000001	8/22/2011	\$300.00	555170 88	EAST CANADIAN COUNTY CONSERVATION DISTR

**OKLAHOMA CONSERVATION COMMISSION
CLAIMS REGISTER BY PROGRAM
FOR THE PERIOD OF AUGUST 22, 2011 THRU SEPTEMBER 18, 2011**

Voucher	Fund Class	Department	Date	Amount	Account	Payee
34317	40000	5000001	8/22/2011	\$71.58	531130	VERIZON WIRELESS
34318	40000	5000001	8/22/2011	\$18.66	531130	AT&T CORPORATION
34319	40000	5000001	8/22/2011	\$15.06	532140	SHARP ELECTRONICS CORPORATION
34319	40000	5000001	8/22/2011	\$128.80	532140	SHARP ELECTRONICS CORPORATION
34322	40000	5000001	8/22/2011	\$23.10	541180	FASTENAL COMPANY INC
34323	40000	5000001	8/22/2011	\$184.00	521120	ZAWROTNY STEVEN M
34323	40000	5000001	8/22/2011	\$156.00	521150	ZAWROTNY STEVEN M
34324	40000	5000001	8/22/2011	\$9,750.00	515060	BRUCE G LUTTRELL CPA PC
34325	40000	5000001	8/22/2011	\$4,510.00	532110	LINCOLN PLAZA OFFICE BUILDING LLC
34326	40000	5000001	8/22/2011	\$945.00	515660	ARC TRAINING AND SAFETY SERVICES
34327	40000	5000001	8/22/2011	\$26.84	531110	SISCO TRUE VALUE HARDWARE
34328	40000	5000001	8/22/2011	\$24.95	531110	SISCO TRUE VALUE HARDWARE
34329	40000	5000001	8/22/2011	\$22.94	531110	SISCO TRUE VALUE HARDWARE
34330	40000	5000001	8/22/2011	\$33.23	531110	SISCO TRUE VALUE HARDWARE
34331	40000	5000001	8/22/2011	\$29.04	531110	SISCO TRUE VALUE HARDWARE
34332	40000	5000001	8/22/2011	\$34.41	531110	SISCO TRUE VALUE HARDWARE
34333	40000	5000001	8/22/2011	\$38.37	531110	SISCO TRUE VALUE HARDWARE
34334	40000	5000001	8/22/2011	\$30.45	531110	MAIL MART
34335	40000	5000001	8/22/2011	\$22.94	531110	MAIL MART
34336	40000	5000001	8/22/2011	\$22.28	531110	MAIL MART
34337	40000	5000001	8/22/2011	\$22.56	531110	MAIL MART
34338	40000	5000001	8/22/2011	\$36.97	531110	MAIL MART
34339	40000	5000001	8/22/2011	\$31.08	531110	MAIL MART
34340	40000	5000001	8/22/2011	\$23.34	531110	MAIL MART
34341	40000	5000001	8/22/2011	\$23.34	531110	MAIL MART
34342	40000	5000001	8/22/2011	\$23.67	531110	MAIL MART
34343	40000	5000001	8/22/2011	\$44.00	531110	MAIL MART
34344	40000	5000001	8/22/2011	\$30.41	531110	MAIL MART
34345	40000	5000001	8/22/2011	\$9.99	531110	MAIL MART
34358	40000	5000001	8/23/2011	\$176.00	521120	RAMMING JASON M
34358	40000	5000001	8/23/2011	\$10.35	521140	RAMMING JASON M
34358	40000	5000001	8/23/2011	\$259.00	521150	RAMMING JASON M
34359	40000	5000001	8/23/2011	\$176.00	521120	COFFEY ZACHARY T
34360	40000	5000001	8/23/2011	\$298.50	521120	CARR JERRY D
34360	40000	5000001	8/23/2011	\$19.39	521140	CARR JERRY D
34360	40000	5000001	8/23/2011	\$546.56	521150	CARR JERRY D
34361	40000	5000001	8/23/2011	\$241.50	521120	CHEADLE CHERYL L
34362	40000	5000001	8/23/2011	\$195.50	521120	SHEPHERD NICHOLAS LEE
34382	40000	5000001	8/23/2011	\$140.45	555170 88	CREEK COUNTY CONSERVATION DISTRICT
34382	40000	5000001	8/23/2011	\$930.00	555170 88	CREEK COUNTY CONSERVATION DISTRICT
34383	40000	5000001	8/23/2011	\$600.00	555170 88	DELAWARE CO CONSERVATION DISTRICT
34385	40000	5000001	8/23/2011	\$7,016.28	515660	DEPARTMENT OF AGRICULTURE FOOD AND FORES
34386	40000	5000001	8/23/2011	\$600.00	555170 88	CENTRAL N CANADIAN RIVER CONSERVATION
34387	40000	5000001	8/23/2011	\$432.00	533140	FUZZELLS BUSINESS EQUIPMENT
34388	40000	5000001	8/23/2011	\$4.64	533140	IKON OFFICE SOLUTIONS
34388	40000	5000001	8/23/2011	\$139.51	533140	IKON OFFICE SOLUTIONS
34401	40000	5000001	8/31/2011	\$17.18	521140	RHEA ASHLEY DAWN
34402	40000	5000001	8/31/2011	\$15.04	521140	RHEA ASHLEY DAWN
34409	40000	5000001	8/31/2011	\$23,220.00	515450	OKLAHOMA ASSOC OF CONSERVATION DISTRICTS
34410	25000	5000001	8/31/2011	\$1,050.00	555170 88	CHEROKEE COUNTY CONSERVATION DISTRICT
34410	40000	5000001	8/31/2011	\$1,560.00	555170 88	CHEROKEE COUNTY CONSERVATION DISTRICT
34411	40000	5000001	8/31/2011	\$19.35	536140	EUREKA WATER COMPANY

**OKLAHOMA CONSERVATION COMMISSION
CLAIMS REGISTER BY PROGRAM
FOR THE PERIOD OF AUGUST 22, 2011 THRU SEPTEMBER 18, 2011**

Voucher	Fund Class	Department	Date	Amount	Account	Payee
34436	40000	5000001	9/7/2011	\$807.60	522110	AUTHORITY ORDER-PCARD
34436	40000	5000001	9/7/2011	\$44.00	531110	AUTHORITY ORDER-PCARD
34436	40000	5000001	9/7/2011	\$100.00	531260	AUTHORITY ORDER-PCARD
34436	40000	5000001	9/7/2011	\$53.98	531600	AUTHORITY ORDER-PCARD
34436	40000	5000001	9/7/2011	\$139.30	533110	AUTHORITY ORDER-PCARD
34436	40000	5000001	9/7/2011	\$1,373.78	533120	AUTHORITY ORDER-PCARD
34436	40000	5000001	9/7/2011	\$75.94	535120	AUTHORITY ORDER-PCARD
34436	40000	5000001	9/7/2011	\$71.19	536150	AUTHORITY ORDER-PCARD
34436	40000	5000001	9/7/2011	\$80.00	537170	AUTHORITY ORDER-PCARD
34436	40000	5000001	9/7/2011	\$353.93	537210	AUTHORITY ORDER-PCARD
34436	40000	5000001	9/7/2011	\$1,223.69	537210	AUTHORITY ORDER-PCARD
34436	40000	5000001	9/7/2011	\$790.36	541260	AUTHORITY ORDER-PCARD
34437	40000	5000001	9/7/2011	\$540.62	531130	AT & T MOBILITY NATIONAL ACCOUNT LLC
34438	49000	5000001	9/7/2011	\$1,644.74	515450	UNIVERSITY OF OKLAHOMA
34439	40000	5000001	9/7/2011	\$5,290.00	515290	NORTHEASTERN STATE UNIVERSITY
34440	40000	5000001	9/7/2011	\$60.00	533140	FUZZELLS BUSINESS EQUIPMENT
34465	40000	5000001	9/13/2011	\$480.00	522150	OKLAHOMA ASSOC OF CONSERVATION DISTRICTS
34492	40000	5000001	9/14/2011	\$57.50	521120	SHAW KIMBERLY R
34492	40000	5000001	9/14/2011	\$86.41	521150	SHAW KIMBERLY R
34493	40000	5000001	9/14/2011	\$298.50	521120	CARTER NATHAN R
34494	40000	5000001	9/14/2011	\$69.00	521120	DEVILBISS MACKENZIE
34495	40000	5000001	9/14/2011	\$69.00	521120	MOORE JR. LEONARD I
34496	40000	5000001	9/14/2011	\$69.00	521120	SHOCKLEY WESLEY E
34496	40000	5000001	9/14/2011	\$65.00	521150	SHOCKLEY WESLEY E
34497	40000	5000001	9/14/2011	\$92.00	521120	LEMMON JEAN R
34497	40000	5000001	9/14/2011	\$260.40	521150	LEMMON JEAN R
34500	40000	5000001	9/14/2011	\$80.50	521120	TRAMELL BROOKS K
34500	40000	5000001	9/14/2011	\$16.89	521140	TRAMELL BROOKS K
34500	40000	5000001	9/14/2011	\$76.49	521150	TRAMELL BROOKS K
34512	40000	5000001	9/14/2011	\$12.90	536140	EUREKA WATER COMPANY
34516	40000	5000001	9/14/2011	\$3.53	533140	IKON OFFICE SOLUTIONS
34516	40000	5000001	9/14/2011	\$134.61	533140	IKON OFFICE SOLUTIONS
34517	40000	5000001	9/14/2011	\$1,071.09	555170 88	CREEK COUNTY CONSERVATION DISTRICT
34518	40000	5000001	9/14/2011	\$500.00	531190	CIRCLE CINEMA FOUNDATION
34520	40000	5000001	9/14/2011	\$4,510.00	532110	LINCOLN PLAZA OFFICE BUILDING LLC
34524	40000	5000001	9/15/2011	\$500.00	555170 99	STEPHENS COUNTY CONSERVATION DISTRICT
34541	40000	5000001	9/16/2011	\$49.24	531110	FEDEX FREIGHT EAST INC
34543	40000	5000001	9/16/2011	<u>\$13.18</u>	531130	AT&T CORPORATION

\$126,526.63 Water Quality

Wetlands

34311	40000	5000002	8/22/2011	\$3,407.06	545110	UNIVERSITY OF OKLAHOMA
-------	-------	---------	-----------	------------	--------	------------------------

Cost Share - Priority Watershed

34363	40000	5000006	8/23/2011	\$87.60	554230 23	VAUGHN CODY
34363	40000	5000006	8/23/2011	\$2,156.60	554230 13	VAUGHN CODY
34364	40000	5000006	8/23/2011	\$522.00	554230 34	HUME IVA
34365	40000	5000012	8/23/2011	\$504.00	554230 19	BILLY BRENT SANDERS

**OKLAHOMA CONSERVATION COMMISSION
CLAIMS REGISTER BY PROGRAM
FOR THE PERIOD OF AUGUST 22, 2011 THRU SEPTEMBER 18, 2011**

Voucher	Fund Class	Department	Date	Amount	Account	Payee
34366	40000	5000006	8/23/2011	\$3,384.72	554230	5 JAMES S MADDOX
34394	40000	5000012	8/26/2011	\$641.23	554230	23 JERRY DAVIS
34394	40000	5000012	8/26/2011	\$1,148.37	554230	22 JERRY DAVIS
34394	40000	5000012	8/26/2011	\$2,010.37	554230	13 JERRY DAVIS
34446	40000	5000011	9/7/2011	\$6,307.20	554230	5 ANDY BRASHEAR
34447	40000	5000011	9/7/2011	\$2,000.00	554230	1 EDMONDSON JIM A.
34448	40000	5000011	9/7/2011	\$1,130.21	554230	23 SAM TAYLOR
34448	40000	5000011	9/7/2011	\$2,544.00	554230	13 SAM TAYLOR
34448	40000	5000011	9/7/2011	\$10,723.33	554230	21 SAM TAYLOR
34449	25000	5000009	9/7/2011	\$4,509.00	554230	29 JILL SORRELS
34450	40000	5000006	9/7/2011	\$1,750.00	554230	29 HERBERT E ANDERSON JR
34451	40000	5000006	9/7/2011	\$1,750.00	554230	29 GLENN REUBEN DAVIS
34452	40000	5000006	9/7/2011	\$4,016.25	554230	34 JAMES ANDREW PAYNE
34521	40000	5000011	9/14/2011	\$800.00	554230	9 EDMONDSON JIM A.
34528	40000	5000012	9/15/2011	\$4,412.16	554230	5 TOM CONE
34528	40000	5000012	9/15/2011	\$6,623.10	554230	21 TOM CONE
34529	40000	5000012	9/15/2011	\$20,672.64	554230	5 JACK CAUDILL
34530	40000	5000012	9/15/2011	\$1,572.61	554230	23 DENNIE R RITCHIE
34530	40000	5000012	9/15/2011	\$1,745.84	554230	22 DENNIE R RITCHIE
34530	40000	5000012	9/15/2011	\$4,267.86	554230	13 DENNIE R RITCHIE
34546	25000	5000009	9/16/2011	<u>\$3,964.50</u>	554230	JOHN TAYLOR

\$89,243.59 Cost Share - Priority Watershed

CREP

34318	25000	5000014	8/22/2011	\$3.18	531130	AT&T CORPORATION
34320	25000	5000014	8/22/2011	\$128.90	532140	SHARP ELECTRONICS CORPORATION
34321	25000	5000014	8/22/2011	\$43.94	541180	FASTENAL COMPANY INC
34436	25000	5000014	9/7/2011	\$366.80	522110	AUTHORITY ORDER-PCARD
34436	24500	5000014	9/7/2011	\$26.99	531600	AUTHORITY ORDER-PCARD
34437	25000	5000014	9/7/2011	\$30.62	531130	AT & T MOBILITY NATIONAL ACCOUNT LLC
34543	25000	5000014	9/16/2011	<u>\$0.93</u>	531130	AT&T CORPORATION

\$601.36 CREP

\$2,258,128.86 Total Claims Paid

OKLAHOMA CONSERVATION COMMISSION
FY-2012 FINANCIAL STATEMENT
September 19, 2011

	<u>FUND</u>	<u>ACCOUNT</u>	<u>ALLOCATION</u>	<u>EXPENDITURE</u>	<u>ENCUMBRANCE</u>	<u>BALANCE</u>	<u>CASH</u>
ADMINISTRATION							
	19201	12	\$2,949,251.00	\$664,560.98	\$1,741,470.41	\$543,219.61	
WATERSHED PLANNING							
	19201	20	\$590,000.00	\$79,559.93	\$61,085.75	\$449,354.32	
FIELD SERVICE							
	19201	30	\$6,022,433.00	\$1,018,386.44	\$4,525,936.56	\$478,110.00	
TOTAL STATE FUNDS							
	19201		\$9,561,684.00	\$1,762,507.35	\$6,328,492.72	\$1,470,683.93	
REVOLVING FUNDS							
Small Watershed -							\$5,161.92
	GIS Fund - 11	20500 / 11	\$50,000.00	\$717.30	\$0.00	\$49,282.70	
	GIS Fund - 12	20500 / 12	\$30,000.00	\$3,224.18	\$200.00	\$26,575.82	\$27,121.09
	OCC Infrastructure / Rehab / 11	21500 / 20	\$3,051,535.00	\$1,793,651.34	\$250.00	\$1,257,633.66	
	OCC Infrastructure / Rehab / 12	21500 / 20	\$1,600,000.00	\$2,339.69	\$463,942.42	\$1,133,717.89	\$1,591,977.52
	Carbon Sequestration /	220 / 50					\$6,720.00
	Donation Fund / Admin / 11	24500 / 10	\$75,000.00	\$8,527.16	\$321.25	\$66,151.59	
	Donation Fund / Admin / 12	24500 / 10	\$60,000.00	\$2,622.74	\$154.76	\$57,222.50	\$3,713.09
							\$198,250.94
	Donation Fund / Field Service / 11	24500 / 30	\$3,000.00	\$0.00	\$0.00	\$3,000.00	
	Donation Fund / Field Service / 12	24500 / 30	\$2,768.00	\$0.00	\$0.00	\$2,768.00	\$12,485.35
	Donation Fund / AML / 11	24500 / 40	\$25,000.00	\$0.00	\$0.00	\$25,000.00	\$41,865.85
	Donation Fund / WQ / 11	24500 / 50	\$100,000.00	\$318.23	\$356.77	\$99,325.00	
	Donation Fund / WQ / 12	24500 / 50	\$52,000.00	\$26.99	\$0.00	\$51,973.01	\$111,650.17
	OCC Infrastructure / O & M / 11	25000 / 20	\$300,000.00	\$28,216.98	\$96.90	\$271,686.12	
	OCC Infrastructure / F Serv / 12	25000 / 30	\$788,310.00	\$137,504.08	\$0.00	\$650,805.92	
	OCC Infrastructure / Cshare / 11	25000 / 50	\$1,710,000.00	\$1,387,117.97	\$14,760.99	\$308,121.04	
	OCC Infrastructure / Cshare / 12	25000 / 50	\$2,298,000.00	\$40,763.86	\$10,485.60	\$2,246,750.54	\$3,125,542.38
FEDERAL FUNDS							
	40000 / 11		\$27,432,832.00	\$11,898,282.41	\$4,078,158.70	\$11,456,390.89	
	40000 / 12		\$13,738,069.00	\$1,048,134.15	\$2,075,350.60	\$10,614,584.25	\$2,106,905.62
	Tar Creek - 41000 / 11		\$25,000.00	\$23,705.48	\$0.00	\$1,294.52	\$12.58
	Sugar Creek - 41500 / 11		\$2,130,000.00	\$155,835.73	\$42,351.58	\$1,931,812.69	
	Sugar Creek - 41500 / 12		\$1,662,768.00	\$14,528.78	\$554.90	\$1,647,684.32	\$3,593,574.31
	ARRA / Watershed / 49000 / 10	20	\$14,625,000.00	\$1,903,752.65	\$144.91	\$12,721,102.44	
	ARRA / Watershed / 49000 / 11	20	\$7,400,000.00	\$2,310,233.33	\$1,992,799.01	\$3,096,967.66	
	ARRA / Watershed / 49000 / 12	20	\$4,300,000.00	\$7,115.84	\$1,592,916.50	\$2,699,967.66	
	ARRA / Field Services / 49000 / 10	30	\$100,000.00	\$95,000.00	\$0.00	\$5,000.00	
	ARRA / Field Services / 49000 / 11	30	\$60,000.00	\$0.00	\$0.00	\$60,000.00	
	ARRA / Water Quality / 49000 / 10	50	\$2,000,000.00	\$332,371.50	\$606,587.37	\$1,061,041.13	
	ARRA / Water Quality / 49000 / 11	50	\$2,560,000.00	\$178,401.47	\$2,333,990.39	\$47,608.14	
	ARRA / Water Quality / 49000 / 12	50	\$2,200,000.00	\$1,644.75	\$1,609,854.26	\$588,501.00	
TOTAL ARRA FUNDS							
	49000 / 10		\$16,725,000.00	\$2,331,124.15	\$606,732.28	\$13,787,143.57	\$369,048.99
	49000 / 11		\$9,660,000.00	\$2,311,878.08	\$3,602,653.27	\$3,745,468.66	
	49000 / 12		\$6,500,000.00	\$8,760.59	\$3,202,770.76	\$3,288,468.66	

Oklahoma Conservation Commission
Summary of Bond Program
as of 9/19/2011

DEPARTMENT CODE	NAME	BOND AMOUNT	TOTAL EXPENITURES	ENDING BALANCE
9909001	Rehabilitation of Dams	8,800,000.00	2,150,782.94	6,649,217.06
9909003	Repair of Dams	7,100,000.00	5,664,111.83	1,435,888.17
9909004	Kingfisher Flood Protection	4,000,000.00	464,846.24	3,535,153.76
9909002	Sugar Creek FEMA and CREP Support	3,000,000.00	211,507.71	2,788,492.29
9909005	Conservation Cost Share	2,100,000.00	1,305,404.52	794,595.48
	Total	<u>25,000,000.00</u>	<u>9,796,653.24</u>	<u>15,203,346.76</u>

Company Name State of Oklahoma

Post Date Between 2011-08-01 00:00:00 and 2011-08-31 23:59:59

Report Owner Coffman, Steven

Report Time 2011-09-19 15:13:38

Transaction Type One of: Cash advance or Misc Credit or Misc Debit or Purchase

Cardholder Statement with Allocation

CH Full Name

Card Last 4 Digits

Txn Number

Alloc Amount

Purchase Date

Post Date

GL Allocation

Vendor Name

SW Contract #

Total Amount

Item Description

Gibson, Sheryl

2224

TXN00076087

300.00

08/02/2011

08/04/2011

531260-1000-20500-1000004-----64500--
6459003190-013-001-001

NATIONAL STATE GEOG IN

300.00

NATIONAL STATE GEOG IN - membership

TXN00076646

19.32

08/04/2011

08/05/2011

535210-1000-40000-4000005-152520000----
64500--6459003190-012-001-001

AMAZON MKTPLACE PMTS

19.32

AMAZON MKTPLACE PMTS - tweezers

TXN00080382

26.99

08/12/2011

08/15/2011

531600-1000-24500-5000014-----64500--
6459003190-015-001-001

AGENT FEE 8900549050589

26.99

AGENT FEE 8900549050589 - Levesque

TXN00080383

420.24

08/13/2011

08/15/2011

536140-1000-24500-1000001-----64500--
6459003190-014-001-001

XPEDX-INTL PAPER

420.24

XPEDX-INTL PAPER - Paper

TXN00080385

366.80

08/12/2011

08/15/2011

522110-1000-25000-5000014-----64500--
6459003190-015-001-001

SOUTHWESTAIR5262193295868

366.80

SOUTHWESTAIR5262193295868 - Levesque
ticket

TXN00083241

71.19

08/20/2011

08/22/2011

536150-1000-40000-5000001-664600000----
64500--6459003190-001-001-001

DMI DELL K-12/GOVT

71.19

DMI DELL K-12/GOVT - external drive

TXN00084015

218.47

08/24/2011

08/24/2011

541120-1000-40000-4000005-664600000----
64500--6459003190-012-001-001

AMAZON MKTPLACE PMTS

218.47

AMAZON MKTPLACE PMTS - external drive

Coffman, Steven

1 of 6

2011-09-19 15:13:38

Exhibit 2

October 3, 2011

CH Full Name

Card Last 4 Digits

Txn Number	Alloc Amount	Purchase Date	Post Date	GL Allocation	Vendor Name SW Contract #	Total Amount	Item Description
TXN00084510	372.80	08/23/2011	08/25/2011	522110-1000-40000-5000001-664600000- 64500-6459003190-001-001-001	AMERICAN AI 0018665813148 sw100	372.80	AMERICAN AI 0018665813148 - Phillips ticket
TXN00084511	26.99	08/23/2011	08/25/2011	531600-1000-40000-5000001-664600000- 64500-6459003190-001-001-001	AGENT FEE 8900549309149 sw100	26.99	AGENT FEE 8900549309149 - phillips ticket
TXN00084515	26.99	08/23/2011	08/25/2011	531600-1000-40000-5000001-664600000- 64500-6459003190-001-001-001	AGENT FEE 8900549309148 sw100	26.99	AGENT FEE 8900549309148 - Cheadle ticket
TXN00084516	434.80	08/23/2011	08/25/2011	522110-1000-40000-5000001-664600000- 64500-6459003190-001-001-001	AMERICAN AI 0018665813149 sw100	434.80	AMERICAN AI 0018665813149 - Cheadle ticket

count: 11

2,284.59

count: 11

CH Full Name
Card Last 4 Digits

TXN Number	Alloc Amount	Purchase Date	Post Date	GL Allocation	Vendor Name SW Contract #	Total Amount Item Description
TXN00075478	2,777.70	08/02/2011	08/03/2011	536190-1000-19201-3000004-----64500-- 6459003190-009-001-001	PROJECT WET	2,777.70 PROJECT WET - education material
TXN00080685	426.09	08/15/2011	08/16/2011	536140-1000-19201-3000004-----64500-- 6459003190-009-001-001	USI ED GOV	426.09 USI ED GOV - laminating file
TXN00081875	45.00	08/17/2011	08/18/2011	536130-1000-19201-1000001-----64500-- 6459003190-002-001-001	MTM RECOGNITION IN STORE	45.00 MTM RECOGNITION IN STORE - Jett name plate
TXN00082395	68.74	08/17/2011	08/19/2011	536140-1000-19201-1000001-----64500-- 6459003190-002-001-001	Staples Contra00710004 sw022	104.56 Staples Contra00710004 - calendars & folders
TXN00082395	25.71	08/17/2011	08/19/2011	536140-1000-19201-3000004-----64500-- 6459003190-009-001-001	Staples Contra00710004 sw022	104.56 Staples Contra00710004 - calendar
TXN00083242	10.11	08/17/2011	08/19/2011	536140-1000-19201-3000004-----64500-- 6459003190-001-001-001	Staples Contra00710004 sw022	104.56 Staples Contra00710004 - stapler cartridge
TXN00083242	100.00	08/19/2011	08/22/2011	531260-1000-40000-5000001-664600000----- 64500--6459003190-001-001-001	SOIL / WATER CONSERV SOC	100.00 SOIL / WATER CONSERV SOC - Membership
TXN00084512	11.07	08/23/2011	08/25/2011	536140-1000-19201-3000005-----64500-- 6459003190-010-001-001	Staples Contra00710004 sw022	11.07 Staples Contra00710004 - calendar
TXN00084513	3.00	08/24/2011	08/25/2011	531600-1000-40000-2000001-109020000----- 64500--6459003190-006-001-002	OK GOV CONVENIENCE FEE	3.00 OK GOV CONVENIENCE FEE - trailers

CH Full Name

Card Last 4 Digits

Txn Number	Alloc Amount	Purchase Date	Post Date	GL Allocation	Vendor Name SW Contract #	Item Description	Total Amount
TXN00084514	166.26	08/23/2011	08/25/2011	536140-1000-19201-2000001-----64500-- 6459003190-006-001-001	Staples Contra00710004 sw022	Staples Contra00710004 - Purchase	166.26
TXN00085119	120.00	08/24/2011	08/26/2011	531250-1000-40000-2000001-109020000---- 64500--6459003190-006-001-002	OK TAX COMMISSION TAG A	OK TAX COMMISSION TAG A - trailers	120.00
TXN00085879	198.00	08/25/2011	08/29/2011	536150-1000-40000-1000002-109020000---- 64500--6459003190-003-001-002	Staples Contra00710004 sw022	Staples Contra00710004 - print cartridge	198.00
TXN00086523	5.70	08/29/2011	08/31/2011	536140-1000-19201-1000001-----64500-- 6459003190-002-001-001	Staples Contra00710004	Staples Contra00710004 - correction tape	5.70

count: 13

3,957.38

count: 13

CH Full Name
Card Last 4 Digits

TXN Number	Purchase Date	Post Date	Vendor Name	Total Amount
Alloc Amount	GL Allocation	SW Contract #	Item Description	
Tramell, Brooks 0945				
TXN00074952 353.93	08/01/2011	08/02/2011	BASS PRO ONLINE	353.93
	537210-1000-40000-5000001-664600000----	64500--6459003190-001-001-001		BASS PRO ONLINE - reagents
TXN00075479 75.94	08/02/2011	08/03/2011	CABELA'S.COM INC	75.94
	535120-1000-40000-5000001-664600000----	64500--6459003190-001-001-001		CABELA'S.COM INC - waders
TXN00076645 1,373.78	08/04/2011	08/05/2011	TELEDYNE ISCO INC	1,373.78
	533120-1000-40000-5000001-664600000----	64500--6459003190-001-001-001		TELEDYNE ISCO INC - sampler repair
TXN00077623 790.36	08/07/2011	08/08/2011	BEACH CAMERA	790.36
	541260-1000-40000-5000001-664600000----	64500--6459003190-001-001-001		BEACH CAMERA - 3 cameras
TXN00078418 44.00	08/09/2011	08/10/2011	USPS 39613200233601881	44.00
	531110-1000-40000-5000001-664600000----	64500--6459003190-001-001-001		USPS 39613200233601881 - shippint
TXN00078926 1,223.69	08/09/2011	08/11/2011	HACH COMPANY	1,223.69
	537210-1000-40000-5000001-664600000----	64500--6459003190-001-001-001		HACH COMPANY - reagents
TXN00078927 139.30	08/09/2011	08/11/2011	TECH LOCK #1	139.30
	533110-1000-40000-5000001-664600000----	64500--6459003190-001-001-001		TECH LOCK #1 - door knobs
TXN00080384 80.00	08/12/2011	08/15/2011	BenMeds 1017731078	80.00
	537170-1000-40000-5000001-664600000----	64500--6459003190-001-001-001		BenMeds 1017731078 - kick nets

CHI Full Name

Card Last 4 Digits

Txn Number
Alloc Amount

Purchase Date

Post Date
GL Allocation

Vendor Name
SW Contract #

Total Amount
Item Description

4,081.00

count: 8

4,081.00

count: 8

10,322.97

report count: 32

Authorized Signature

Authorized Signature 2

Print Name

Print Name

Date

Date

OCC AGREEMENTS FOR CONSIDERATION

OCC PARTY ID	NO	PURPOSE	AMENDMENT PURPOSE	BEGIN DATE	END DATE	AMOUNT TO OCC	AMOUNT FROM OCC	FUNDING SOURCE
a	Eligible Verifying Conservation Districts	OCC286	to provide verification for the carbon program as directed and be compensated at an hourly rate and for mileage	10/1/2011	10/1/2014		\$20/hr + mileage	Carbon Prog
b	Oklahoma State University	OCC261	to contract with OSU to perform streambank stabilization activities for the Illinois River Streambank Stabilization Project.	6/1/2011	9/30/2012		\$636,777.00	ARRA
c	NRCS	68-7335-1-28	Amendment 2 - increases the amount from \$595,499 to \$636,777.	10/1/2011	12/31/2012	\$10,000.00		NRCS
			funding for a new Conservation Leadership Program in Oklahoma.					

OUT OF STATE TRAVEL REQUESTS

OCC ID	DATES	SPONSOR	NAME OF MEETING	LOCATION	ATTENDANCE	EST COST	FUNDING SOURCE
a	November 1-3, 2011	Northeast Environmental Training Center	Introduction to Managing Environmental Data Training Course	Greenwich Village, CO	Lemmon	\$1,700.00	EPA
b	November 28-December 2, 2011	Office of Surface Mining	Autodesk University	Las Vegas, NV	Sharp	\$2,000.00	OSM

OKLAHOMA CONSERVATION COMMISSION'S PROPOSED BUDGET REQUEST - FISCAL YEAR 2013

1. General Revenue Restoration for Conservation Program Delivery		\$1,595,746.
2. Upstream Flood Control Infrastructure		\$10,400,000.
Operation and Maintenance	\$4,000,000.	
Rehabilitation	\$4,000,000.	
Breach Inundation Mapping	\$2,400,000.	
3. Conservation Cost-Share		\$15,000,000.
Locally Led	\$5,600,000.	
Priority Watershed	\$2,600,000.	
Roadside Erosion	\$6,700,000.	
4. Water Quality Monitoring		\$400,000.
5. Office of Geographic Information		\$309,000.
	TOTAL*	\$27,704,746.

* Request is for new state general revenue appropriations

**OKLAHOMA CONSERVATION COMMISSION
ADMINISTRATION STAFF - SUMMARY OF ACTIVITIES
October 3, 2011**

Administration

- Attended a meeting with the new U.S. Fish and Wildlife Service director
- Attended the Shawnee Ag Appreciation banquet
- Attended the Henry Bellmon Research Center dedication
- Attended the National Association of State Conservation Agencies Annual Meeting in Columbus, Ohio
- Attended the Dewey County Drought Seminar
- Scheduled to attend a full staff meeting
- Scheduled to participate in the OACD executive board retreat
- Represented the Commission at the Coal County Conservation District Open House
- Worked with the District Services Division and NRCS on the hiring of four soil conservation technicians
- Participated in several budget meetings to prepare the Commission's FY 2013 budget request
- Participated in the OACD Executive Board Retreat
- Participated in several meetings regarding Commission staffing issues and personnel
- Participated in the Commission's full staff meeting

Information Officer

- Continued technical management of and updating information on OCC's web page. Created and/or edited and published the following stories:
 - EPA Adds \$1.5 Million to Water Quality Projects
 - Coal County Conservation District holds Open House in New Building
 - OACD to Receive Conservation Grant for Wildlife Credit Program
 - OACD praises EPA decision to fund additional water quality efforts
 - Conservation Program helps landowners recover from drought
 - Record August Puts Exclamation Point on Hottest Oklahoma Summer
 - Conservation Districts in the News
 - Farm Women's Day Out
 - Conservation Drought Seminar
- Produced a news release on the Program Year 13 of the Locally-Led Conservation Cost-Share Program. Distributed it to statewide media and provided conservation districts with a version of the release for their local use.
- Continued using Twitter to communicate messages and news about conservation-related activities under the name OK Conservation Cmsn at the address @conservation_ok. Began wider promotion of the Twitter account.
- Participated in an online demonstration of GovDelivery, a system for integrating a variety of electronic notifications that will soon be available to state agencies for communicating with the public.
- Worked on creation of a Social Media/Social Networking policy for OCC. Presided at monthly meeting of Oklahoma State Webmanagers Group
- Produced OCC monthly newsletter and prepared newsletters for OCC web page.

- Deposited OCC publications with the Publication Clearinghouse of the Dept. of Libraries in compliance with statutes.
- Continued arrangements for farm shows and convention display booths. Worked with the Oklahoma Conservation Tribal Advisory Council to plan a schedule of cosponsored events.
- Attended a meeting of the Oklahoma State Web Managers Group
- Monitored Oklahoma City and Tulsa news.

Tribal Outreach Coordinator

Stamper Project

- Shanon Phillips, WQP Director, has put Mr. Stamper in contact with a group that may bring private investors to the project. This is probably the only viable avenue for funding at this point.

Kiowa Tribal Conservation District and Water Resources Board (KTCD)

- Continue to work with the KTCD on their long range plan and efforts. The Kiowa Tribe is in some internal political turmoil currently. Discussed possible partnership efforts and need for assistance on 9/16.

Coordinated Partnership with the Oklahoma Tribal Conservation Advisory Council (OTCAC)

- Worked with NRCS and OTCAC on upcoming meetings and meetings for next year. This includes the partnering on booth/display costs at major meetings in 2011-2012.
- Meetings were held in Lawton (8/11), Okmulgee (8/18/) and Shawnee (8/31) with good attendance.
- NRCS and OTCAC held a “Working Effectively with Indian Nations” training conference in Shawnee at the Citizen Potawatomi Nation on August 2-3. This was for USDA employees.

Oklahoma Prescribed Burn Association (OPBA -Tentative)

- A meeting was held July 7 in Lawton and had 63 in attendance. The Comanche Co. CD, Tillman Co. CD, Kiowa Co. CD, Big Pasture Burn Association, NRCS and OSU Extension sponsored the meeting. Prescribed fire, formation of OPBA/liability coverage, NRCS programs and TA and the Big Pasture Burn Association revitalization was discussed.
- A meeting was held on July 19 in Stillwater and had 140+ in attendance. The meeting was sponsored by the Payne Co. CD, Noble Co. CD, Pawnee Co. CD, Lincoln Co. CD, Cross Timbers Burn Association, Farm Credit, NRCS and OSU Extension. Presentations on OPBA, prescribed burns, Firewise and NRCS programs were given.
- A meeting was held 9/7 with Rigdon & Associates for guidance in continuing the formation of the association so that liability insurance can be purchased.
- I have worked with Dr. Butch Taylor, Texas A&M, on securing the bylaws of the Edwards Plateau Prescribed Burn Association so that the Oklahoma counterpart has a model to use.

Oklahoma Prescribed Fire Council (OPFC) –

- A meeting was held in Stillwater on June 30. The OPFC worked on needed actions for the next year.

Oklahoma Invasive Species Council (OKIPC) –

- Continued monitoring activities

**OKLAHOMA CONSERVATION COMMISSION
DISTRICT SERVICES DIVISION
SEPTEMBER MONTHLY SUMMARY**

**Lisa Knauf Owen, Director
October 3, 2011 Commission Meeting**

Provided Assistance to the Following Districts

Checotah	East Woods	LeFlore	Pontotoc
Cherokee	Ellis	Lincoln	Pushmataha
Craig	Garvin	Marshall	South Caddo
Custer	Greer	Muskogee	Texas
Dewey	Hughes	Okmulgee	Tillman
East Canadian	Jackson	Payne	Tulsa

Meetings & Events Attended

- * Conservation District Board Meetings Attended:
 - East Canadian County (2)
 - Ellis County
 - Marshall County
 - Tillman County

Division Activities

- * Met with Admin and Financial Mngt. to discuss Commission budget submission. Provided conservation district budget request data to Water Quality and Conservation Programs staff.
- * Confirmed that all district financial materials have been delivered to auditors within the first week of September.
- * Reminded districts to notify OCC of selection of board officers.
- * Attended the NASCA meeting in Columbus, OH. Participated in the Field Staff Sharing session, made a presentation entitled "Successfully Delivering Conservation with ARRA Funding", and provided education committee report to the NASCA board.
- * Assisted East Canadian County with day-to-day operations due to retirement of secretary. Prepared board meeting minutes, financial reports, agenda development, took minutes at board meeting. Assisted the board with conducting interviews to hire new district manager. Notified unsuccessful candidates via letter.
- * Continued work on NRCS technician agreement. Prepared news advertisements for position, developed interview questions and PMP for positions. Met with NRCS state office, Ben Pollard and the 4 District Conservationists to review applications and plan the scope of work for new technicians. Notified candidates selected for interviews and set up interview times. Notified candidates not selected for interviews via letter. Conducted interviews in 4 locations for positions.
- * Notified districts that all NRCS local operational agreements had been signed and sent in. Each district will receive an additional \$1,000 of operating expenses from the Contributions Agreement.
- * Provided Conservation Districts with information regarding the Attorney General's Open Meeting Act seminars.
- * Discussed allocation of funds for part-time employees with Tillman County CD at their board meeting.
- * Compiled and submitted prescribed burn acreage data to USFWS for 2 current burn agreements.

- * Discussed with Marshall County CD board the direct technical assistance portion of the contributions agreement; asking for Mr. Lampe to assist NRCS deliver farm bill programs.
- * Continued working through a personnel matter with Ellis County Conservation Districts.
- * Began planning for the OACD Area meetings.
- * Followed up with district employees regarding access to the USDA IT network.
- * Processed conservation district minutes.
- * Assisted districts with information regarding district employee promotions, vacancies and upcoming retirements.

**OKLAHOMA CONSERVATION COMMISSION
WATER QUALITY DIVISION
SEPTEMBER MONTHLY SUMMARY**

Shanon Phillips, Director
September 21, 2011

Conservation District Meetings

Staff attended Adair, Blaine, Cherokee, Central North Canadian River, Delaware, Dewey, East Canadian, Mayes Conservation District Board meetings.

Honey Creek Implementation/Demonstration Projects

Staff conducted the following activities:

- 105 conservation plans have been written on 20,875.6 acres in the watershed
- 42 cooperators are actively participating and 43 have completed implementation
- Conducted 9 site visits this month to inspect completed BMPs or work in progress
- Held 21 consultations with producers or interested participants
- Funds spent since last report: \$ 51,466.40
- Total claims paid to date through 09/15: \$ 1,445,388.33
- Cooperators Share: \$ 701,591.57
- Funds obligated to date: \$ 1,736,461.84

BMP information

- This month we added 0 new feet of riparian exclusion fencing for a total of 39,676 feet of riparian exclusion fencing; 380.2 total acres of riparian exclusion.
- This month we added 17,420 new linear feet of fencing for a total of 171,056 linear feet.
- This month we added 0 acres of grass planting for a total of 117 acres.
- This month 0 new septic system was installed for a total of 12 replacement systems in the watershed.
- This month 0 new ponds were constructed for a total of 20 ponds.
- This month 5 new watering facilities were installed for a total of 137 watering facilities.
- This month 2,559 feet of pipeline was installed for a total of 49,265 feet of pipeline.
- This month 2 new wells were drilled for a total of 50 wells.
- This month 0 new winter feeding facilities were constructed, for a total of 22 WFFs.
- This month 0 new cake out/litter storage facilities were constructed for a total of 2 cake out/litter storage facilities.
- This month 5 new heavy use areas were installed, for a total of 173 heavy use areas.

North Canadian River

Staff conducted the following activities for September, 2011:

- 110 total Performance Agreements have been approved by district boards.
 - 4 new Performance Agreements in July and August.
 - As of September 19, landowners have installed \$1,076,890.93 in BMPs.
 - Of this amount, \$102,013.61 are in landowner contributions
- **Funds obligated to date: \$ 1,666,092.49**

- **Activities For the month of September**

- 09.09.11 – Central North Canadian River Conservation District Open House held in conjunction with the Geary Tri-county Fair.
 - NCR 319 Project provided “Fish Painting”, Enviroscape Demonstrations and the NCR 319 Project information/outreach booth.
- 09.16.11 – Demo Farm Planning.
 - NCR 319 Project staff met with landowners to do preliminary conservation planning for the project’s demo farm.
- 09.20.11 – Dewey County Drought Management Seminar
 - NCR 319 Project provided and staffed an information/outreach booth.
- 09.22.11 – Staff met with OSU personnel and demo farm landowner’s for the purpose of incorporating OSU research projects into the demo farm.
 - Proposed OSU research projects: “Green-seeker technology, effects of inter-seeding root crops into no-till and subsequent grazing effects, carbon sequestration.
- 09.27.11 – Dewey County hosted the “Women in Ag” seminar.
 - NCR 319 Project provided and staffed an information/outreach booth.
- 09.29.11 – Blaine County Drought Seminar
 - NCR 319 Project provided and staffed an information/outreach booth.

BMPs completed:

- No-till: 18,414 implemented acres.
- Grass Planting: 968 implemented acres. (Weather has been too dry for planting)
- Septic Systems: 8 septic systems completed. 2 new systems pending.
- Waterways: 0 waterways completed.
- Ponds/GSS: 0 new ponds; 0 new GSS; 1 GSS completed.
- Solar Pumps/Tanks/Wells: 5 completed; 8 pending
- Pipelines: 2 Total
- Cross Fencing: 7,842 L.F. completed.
- Riparian Area Fencing: 50,707 L.F. installed. 1,400 est. new L.F. pending.
- Riparian Area Exclusion: 409 acres implemented. 10 new acres added.

Illinois River Riparian Project

Staff conducted the following activities:

- Conservation planning in the Illinois River watershed
- Reviewed progress and prepared claims on Illinois River BMPs, including taking GPS readings and photos of BMPs.
- 213 Total applicants, 154 approved to date, 84 completed, 45 currently active, 24 cancelled; 77 Conservation Plans written to date
- BMP Information, added this month
 - 105 new acres enrolled in Use Exclusion for riparian areas, 1115.7 total
 - 0 new Septic system replacement this month, 71 total replaced
 - 2575 L ft of riparian fence added, 60,364 L ft of riparian fence total (~11.4 miles)
 - 52,360 L ft of cross fence total

- 2638 cu yds of heavy use area total on 74 areas
- 9 wells total
- 1 solar pump, storage tank & well total
- 4 ponds total
- 75 DIFT of pipeline PVC added, 41157 DIFT of pipeline PVC total
- 57 off-site watering facilities total
- Funds spent during August 2011: \$18,406
- Total claims paid to date through 8/22/11: \$1,132,467
- Cooperators Share: \$513,760
- Funds obligated to date: \$1,952,980

Spavinaw Creek Watershed Implementation

Staff conducted the following activities:

- 74 cooperators are actively participating
- 6 contracts were written this month
- Conducted 6 site visits this month to inspect completed BMPs
- Held 13 consultations with producers or interested participants
- Funds spent during August 19- September 19, 2011: \$35,039.64
- Total claims paid to date through September 19, 2011: \$ 1,246,078.26
- Cooperators Share: \$885,152.67
- Total Funds Paid: \$2,131,230.92
- Funds obligated to date: \$2,005,061.95

BMPs completed in the watershed this past month:

- Added 4380 new linear feet of fencing for a total of 176,744
- Added 660 linear feet of riparian fencing this month, for a total of 19,819 linear feet
- Installed 0 new septic system this month, for a total of 24 septic systems replaced
- Constructed 3 new ponds this month, for a total of 13 ponds constructed
- Installed 0 new watering facilities this month, for a total of 81 watering facilities
- Installed 772 feet of pipeline this month, for a total of 34,466 feet of pipeline
- Drilled 1 new water wells this month, for a total of 26 water wells completed
- Constructed 1 new winter feeding facilities this month, for a total of 21 winter feeding facilities.
- A total of 223.4 acres of grass planting have been completed in the watershed.
- Installed 1 heavy use areas using concrete, gravel and geotextile this month, for a total of 110 heavy use areas

Conservation Reserve Enhancement Program

Staff conducted the following activities in September 2011:

- Applications and Acreage
- 126 applications have been taken for CREP
- One hundred twenty-three site visits have occurred
- Two landowners opted out prior to visit
- Forty-six landowners opted out after initial visit

- Nine have not qualified for various reasons
- Twelve have been GPSed and are ready for contracts
- One landowner is waiting cost-share on bank stabilization with Partners for Wildlife and OSRC before enrolling in CREP
- **Fifty-three contracts have been approved and signed**
- Acreage on four contracts has been withdrawn from program leaving forty-nine viable contracts
- Total Acreage:
 - Considered = 2,383.6 acres
 - Declined or Ineligible = 1,575.3 acres
 - Contracted = 550.8 acres (Goal = 9,000 acres)
 - Removed from program = 32.7 acres
 - Pending = 255.3 acres

	Contracted or Paid Out	Remaining Funds
FSA	\$ 880,095.87	\$ 19,219,904.13
State	\$ 2,183.02	
Landowner	\$ 99,454.63	N/A
Total	\$ 981,733.52	

- **BMP Information**
- Total linear feet of riparian fencing installed is **46,646**
- Contracted, but not yet installed = 22,025 linear feet
- Total bare-root seedlings planted to date is **65,082**
- Contracted, but not yet installed = 49,454
- One pond has been installed
- Two water wells have been installed
- Two watering facilities have been installed. Four more are contracted for installation
- One heavy use area has been installed
- 865 feet of pipeline has been installed and an additional 1,150 feet are scheduled for installation
- **Over \$145,463.00 has been paid out in cost share on best management practices for CREP!**
- Kevin Goodnight project with USFWS is complete and now ready to start CREP contract
- Wrote a riparian management plan for the Claremore Outing Club

Technical Writing

Staff conducted the following activities in September:

- Participated in meeting with OSU on projects in North Canadian River watershed (9/8)
- Participated in webinar on water quality criteria (9/20)
- Meter calibration/QA day for field staff (9/21)
- Conducted field audit for field staff (9/27)
- Attended full staff meeting (9/28)

Carbon Program

- Participated with teleconference with NWF and OSU regarding the Nutrient Management CIG Project
- Met with OSU regarding Ecosystem Services Project in N. Canadian River watershed
- Met with OACD and FSA to get a better understanding of FSA Form 578 Report of Acres
- Met with OSU regarding beginning development of a GIS-based soil carbon database
- Communicated with OK Forestry Services about drought impacts on Fall forestry verification
- Communicated with NRCS regarding drought impacts on Fall verification of no-till, grasslands, and rangeland
- Met with OACD regarding optimizing overlaps between Carbon Program and Wildlife Credit Program
- Participated in teleconference with OK SWCS to organize a "Communicating with New Landowners" seminar for agencies
- Performed pre-verification of WFEC/CIG Project applications to determine eligibility of approx. 30,000 acres
- Attended Conservation Drought Seminar for Western Oklahoma, Dewey County Fairgrounds
- Updated Blue Thumb webpages
- Updated Carbon Program webpages
- Attended HRDS class on sexual harassment
- Attended full agency staff meeting

Monitoring

Staff conducted the following activities:

- Conducted routine water quality monitoring for the Rotating basin - 5.2 (Lower Red River Basin)
- Conducted routine water quality monitoring for the Rotating Basin – 1.3 (Neosho-Grand and Upper Canadian Basins)
- Completed the probabilistic monitoring (fish, water and macroinvertebrates) for the Rotating Basin Project 1.3 (Neosho-Grand Basin only).
- In addition, water samples were collected for Honey Creek, Lake Eucha/Spavinaw, Illinois River CREP, and the North Canadian Project sites.

Wetlands Coordinator

Staff conducted the following activities:

- Conducted 30 wetland determinations
- Completed the field assessment portion (14 sites) of the NWCA project
- Staff continued collecting and assimilating information for the fy '11 Development of a Wetland Plan for Oklahoma
- Attended and presented information about the state wetlands program at the Oklahoma Military Environmental Group Meeting held at Tinker Air Force Base
- Participated in Brookhaven Creek Education Program (9/14)
- Completed post monitoring at the Brookhaven Project site in Norman

Blue Thumb – Statewide

Blue Thumb Field Work and Quality Assurance Sessions

Blue Thumb's final two fish collections (which required assistance from Water Quality Specialists Leonard Moore and Wes Shockley) were completed. Preliminary planning for the fall QA sessions is beginning.

Education/Events Calendar

- 9/01 – Oklahoma Centennial Botanical Garden (green infrastructure meeting) Kevin
- 9/07 – Deep Fork National Wildlife Refuge New headquarters facility open house, Henryetta, Cheryl and Bill
- 9/08 – Creek Walk with NSU Science class, Tahlequah, Cheryl and Bill
- 9/12 – Assistance to new team in Washita County to complete first monitoring event, Kim
- 9/13 – Grand Lake Watershed Alliance meeting, Kevin
- 9/13 – §319 Information meeting, Jay, Cheryl
- 9/17 – Master Gardener Fall Festival, Kevin
- 9/18 – Nature Conservancy 25th Anniversary, Jenks, Cheryl
- 9/21 – Rain Garden maintenance and education, Remington Elementary, Kevin
- 9/23 – Stream Life Presentation, Tulsa Community College, Kevin
- 9/26 – Rain Garden Presentation at Philadelphia Low Impact Development Conference, Cheryl
- 9/29 & 30 – Blue Thumb Exhibit at Illinois River Watershed Partnership Watershed Academy, West Siloam Springs (Cheryl and three volunteers)

Field Activities

Macroinvertebrate Collection/site checks (some water was too low for collections) made by Kim:

- Johnston County
- Murray County
- Oklahoma County
- Washita County
- Hughes County

Electroshocking with Water Quality Specialist (Cheryl)

- McCurtain County
- LeFlore County

Upcoming

- Master Gardeners Water Conference, Wichita Falls, Kevin (10/01)
- Mayes County Conservation District board meeting, Cheryl (10/05)
- "This Land is Your Land" Becoming an Outdoor Woman Workshop, Pryor, Cheryl (10/07)
- Natural Resource Day (Hughes County Conservation District) Kim (10/07)
- Oklahoma Centennial Botanical Garden, Citizenship Presentation, Tulsa, Cheryl (10/08)
- Natural Resource Day (Oklahoma County Conservation District) Kim (10/11)
- Natural Resource Day (Oklahoma County Conservation District) Kim (10/12)
- Natural Resource Day (Latimer County Conservation District) Cheryl, (10/12)
- Natural Resource Day (Hughes County Conservation District) Kim (10/14)
- BioBlitz! Murray County, Cheryl (10/14 & 15)
- Groundwater Screening (Texas County Conservation District) Kim (10/20 & 21)

Additional Work

- The Blue Thumb 2012 Calendar has been turned in for printing.
- A volunteer newsletter has been mailed out.
- Meeting has taken place to begin Kevin Gustavson in his new role of Blue Thumb Technical Outreach Coordinator.
- Work/study/planning is taking place for "This Land is Your Land" workshop.
- Planning is beginning for OACD Area Meetings.
- Presented on Blue Thumb Program at the National Monitoring Program Projects and Low Impact Development Conference in Philadelphia, PA (9/25 – 9/29)

Meetings Attended by WQ Staff:

Various staff attended the following meetings:

- Used Enviroscape for outreach at the Adair County Fair (9/7)
- Staff presented information on CREP at §319 Program meeting, Jay (9/13)
- Attended Illinois River Watershed Academy (9/29-9/30) and provided OK CREP Fact Sheets for attendees registration packets
- Attended §319 Water Quality Session (51 participants)
- Brookhaven Creek Workshop (9/14)
- Weekly Cow Creek (Stillwater) bank stabilization construction meetings
- Presentation on North Canadian River Project at the National Monitoring Program Projects and Low Impact Development Conference in Philadelphia, PA (9/25 – 9/29)
- Attended Oklahoma Legislative Comprehensive Water Plan Committee Meeting (9/21)
- Attended a North Canadian Phase III project coordination meeting (09/08)
- Attended a Thunderbird Watershed Technical Advisory Group meeting (09/22)

**OKLAHOMA CONSERVATION COMMISSION
ABANDONED MINE LAND DIVISION MONTHLY SUMMARY**

Mike Kastl, AML Program Director

October 3, 2011

FY 2009 AML SIMPLIFIED GRANT - The following is the status report on the submitted projects:

1. Farley - 085 (Sequoyah County)
All reclamation work has been completed and the site has been planted. The site will be monitored on a monthly basis or at intervals of 0.5 inches of rainfall or more until 70 percent vegetation is established.
2. Bronson - 071 (Rogers County)
All reclamation work has been completed and the site has been planted. The project will be monitored as per AML Program guidelines.

FY 2010 AML SIMPLIFIED GRANT - The following is the status report on the submitted projects:

1. Shouse - 251 (Rogers County)
All reclamation work has been completed and the site has been planted. The project will be monitored over the next two years per AML Program guidelines. Extreme heat and lack of rain may require the site to be re-planted.
2. Azbill - 246 (Rogers County)
The final inspection and acceptance of the project occurred on July 8. The site has been recently planted and will be monitored on a monthly basis or at intervals of 0.5 inches of rainfall or more until 70 percent vegetation is established.
3. Reves Phase 2 South - 101 (Sequoyah County)
As of September 29, the contractor, Goad & Sons Construction LLC, has completed approximately 75 percent of the work in 65 percent of the contract time. The three 38"x53" culverts have been installed and the contractor is working on excavation of the easterly bypass channel. Permanent erosion control measures will be installed after the site is fine graded. The contractor's progress is being monitored closely. The contract time is 400 calendar days with the completion date of February 20, 2012.
4. Peevyhouse - 140 (Haskell County)
As of September 29, the contractor, LLG Construction, Inc., has completed approximately 55 percent of the work in 45 percent of the contract time. The contract time is 150 days with an end date of December 20, 2011.

5. Bates/Fullerton - 259 (Rogers County)

The bid package was delivered to the DCS Construction and Property Division on September 14 to begin the bid process. The project will be advertised around the first of October and will specify that work will not start until after hunting season. Start of construction is anticipated in early January of 2012. The estimated construction cost is \$650,000 to \$750,000 and the project duration is 252 calendar days.

FY 2011 AML SIMPLIFIED GRANT - On June 7 the Conservation Commission submitted the first reclamation project for this grant to the Office of Surface Mining. The project is the Wilson UM - 185 AML Project, located in Latimer County. The Office of Surface Mining must now issue the authorization to proceed before work can begin on site. The following is the status report on the submitted projects:

1. Wilson UM - 185 (Latimer County)

The Office of Surface Mining must issue the authorization to proceed before the project can be submitted to DCS Construction and Properties Division to begin the bid and contracting process.

FUTURE PROJECTS

1. McSpadden – 026 (Rogers County)

A partial end fill of this pit occurred in 1985 near a 90-degree roadway curve. This project is approximately 17 acres. The highwall is as close as six feet to the roadway and is actively undercutting and getting closer to the roadway edge. This site has been reviewed by the State Reclamation Committee. Design for this site was completed in-house. The project will now be submitted to the Office of Surface Mining for inclusion in the FY 2011 AML Simplified Grant and for an authorization to proceed. The estimated cost of reclamation is \$200,000.

2. Reves Phase 2 North - 102 (Sequoyah County).

This 20-acre project site is on the north side of the road, opposite the 80-acre Reves Phase 2 South project site. This site has been reviewed by the State Reclamation Committee. The project will now be submitted to the Office of Surface Mining for inclusion in the FY 2011 AML Simplified Grant and for an authorization to proceed. The estimated cost of this project is \$140,000 to \$200,000.

3. Raspotnik UM - 199 (Latimer County)

The Raspotnik underground mine site is located approximately 3 miles northwest of Gowen in Latimer County. The site is a subsidence that is open with vertical sides, 7 feet in diameter by 11.5 feet deep, and appears to open into the underground coal mine. The subsidence hole is close to Clonsilla Hill Road in an open pasture visible from the road making it an attractive nuisance. This site has been reviewed by the State Reclamation Committee. The project will now be submitted to the Office of Surface Mining for inclusion in the FY 2011 AML Simplified Grant and for an authorization to proceed. The estimated cost of this project is \$7,000.

4. Bacon - 252 (Rogers County)

This project site is approximately 37 acres located adjacent to HWY 28, one mile south of the Nowata County line. The design (in-house) should be completed by mid August. OSM Alton is preparing the environmental documentation for permit approval and requested that a ABB study be prepared. Eagle Environmental Consulting, Inc., has completed the survey for the American Burying Beetle (*Nicrophorus americanus*). It is anticipated that this project will cost approximately \$550,000 and will be bid in the winter of 2012.

5. Northeastern State University - 166/180 (Wagoner County)

The final design is due in the OCC office in early October. This project is estimated at \$750,000 to \$850,000 and will be bid sometime in 2012.

6. Reves Phase 3 - 101/102 (Sequoyah County).

This project site is approximately 65 acres and is adjacent to the east side of Phase 2 South. The estimated cost of this project is approximately \$850,000.

7. Greer Phase 3- 208 (Rogers County)

The Greer abandoned mine land site is a 65-acre site located 4 miles south of the town of Claremore (pop. 13,280) and 2 miles northeast of the town of Verdigris in Rogers County. The site is just west of Historic U.S. Highway 66. An industrial park is within 100 yards of the south end of the site. There is a new housing addition adjacent to the east side of site. There is approximately 3,600 feet of dangerous highwall (DH) up to 70 feet high, and one 8.5-acre water-filled strip pit at the site. The project is currently being designed by the AML Program Engineer. The estimated cost is approximately \$850,000.

**MONTHLY SUMMARY
FINANCIAL MANAGEMENT & HUMAN RESOURCES
STEVEN COFFMAN, COMPTROLLER**

October 3, 2011

- Processed vouchers
- Reconciled August activity to the Office of State Finance and the State Treasurer
- Reconciled August activity for the employer's share of health insurance and retirement from 87 conservation districts
- Reconciled August activity for the Bank of America purchase card program
- Prepared and submitted requests for funds from EPA 319 and 104B3 grants via Office of the Secretary of the Environment, rehabilitation funding via the U.S.D.A. Natural Resources Conservation Service, and AML funding via the Department of the Interior
- Preparation of AFLAC and OSEEGIB billings for Plan Year 2011
- Prepared monthly mileage reports for state leased motor vehicles to the Department of Central Services, Motor Pool Division
- Processed Request for Acquisitions
- Worked with the Office of State Finance to process supplemental, off-cycle, and regular payrolls via shared services agreement
- Met with the Oklahoma Capitol Improvement Authority to reconcile activity year to date against the Conservation Bond
- Completed and submitted conversion packages for Federal Grants / Entitlement Receivables, Accounts Payable and Encumbrances, Miscellaneous, and Schedule of Expenditures of Federal Awards
- Prepared FY-2013 Budget Request and input into the Office of State Finance Budget Request System
- Prepared materials and scheduled option period meetings to be held in Walters, Marietta, Weatherford, McAlester, Tahlequah, Vinita, Idabel, Oklahoma City, Buffalo, and Ponca City

**OKLAHOMA CONSERVATION COMMISSION
INFORMATION TECHNOLOGY DIVISION MONTHLY SUMMARY**

Mike Sharp, Director

September, 2011

- Sharp attended the National Coal Mining Geospatial Committee meeting held in Memphis, TN on September 13-15.

AML

- Worked on data analysis and mapping on HLCUM AML Project in Haskell and LeFlore counties.
- Worked with AML Inspector Tracy Reeder at the Rogers County office on design of the McSpadden AML reclamation project.

IT Support Activity

- Worked on various hardware and software support issues for OCC computer systems.
- Routine server, software and anti-virus and anti-spam maintenanc.
- Worked with various conservation districts on IT issues.
- Worked on migration issues associated with upgrading server and email software.
- Worked on various issues related to IT consolidation, budget and inventory.

Geographic Information System (GIS) Activity

- Provided GIS services to AML, Conservation Programs and WQ,
- Worked with the Watershed Assessment Team on various issues.

Office of Geographic Information

- Participated in various Oklahoma Broadband Team meetings.
- Prepared minutes for and conducted meeting of the State Geographic Information Council on September 9. Next meeting will be November 4.
- Participated in the Landcover Workgroup meeting on September 9..
- Met with representatives from ODOT, OneNet and OSF concerning GIS activities associated with the state's new broadband effort involving the Oklahoma Community Anchor Network.
- Worked with contractor MY Consulting and sub-contractor Coordinate Solutions on the OKMaps Phase 2 project.
- Worked on developing a white paper on governance of geographic information resources for the State of Oklahoma..
- Worked on preparations for the meeting of the Oklahoma Chapter of the South Central ArcGIS User Group (SCAUG) to be held on October 25 in Oklahoma City.

**OKLAHOMA CONSERVATION COMMISSION
CONSERVATION PROGRAMS DIVISION**

Robert W. Toole, Director

October 3, 2011

Administration

- CPD administration & management: CPD staff meeting; WT staff meeting
- Government Affairs: Kingfisher Flood Project Administration
- District Board Meetings: Garvin, Muskogee County, and Tillman County
- OCC Administration: Principle Staff meeting, Full Staff meeting
- NRCS: Watershed O&M and Rehabilitation Coordination
- OWRB: Watershed dams & dam safety coordination
- Oklahoma Floodplain Managers Association 2011 state conference presentation

Cost-Share Program

- Water Quality: Consulted with Water Quality Division staff to process priority watershed and litter transfer claims. Provided locally led cost-share match information to Water Quality staff.
- Reviewed monthly reports received from conservation districts.
- Prepared and distributed CSPY 11B final report.
- Provided district staff training to 13 Conservation Districts:

Ellis County	Woodward County	Kiowa County
Payne County	Caney Valley	Nowata County
Tulsa County	West Caddo	South Caddo
Central North Canadian River	Coal County	Atoka County

Bryan
- Claims: Processed 20 cost-share claims for a total reimbursement of \$96,512.85 including:
 - 11 locally led claims for a total of \$25,949.43
 - 9 Priority Watershed claims for a total of \$70,563.42
- Assistance: Provided Cost-Share Program assistance to 13 Conservation Districts:

Lincoln County	Woodward County	Craig County
Beaver County	Noble County	Central North Canadian River
Harmon County	Upper Washita	East Canadian County
Pawnee County	Kingfisher County	Little River

Jefferson County

Conservation Education

- Assistance: provided Conservation Education assistance via phone or email to 6 conservation districts:

Dewey County	Kingfisher County	North Fork of Red River
Oklahoma County	Payne County	Washita County
- District Education Events:
 - ✓ Continued planning for 2012 Oklahoma Envirothon competition
 - ✓ Continued planning for 2011 Wildlife Expo including volunteer scheduling, gathering supplies, developing interpretive materials
- Project WET
 - ✓ Attended Project WET USA Coordinator Conference
 - ✓ Continued planning for 4-State advanced training
- OKEECC
 - ✓ Coordinated and attended OKEECC Annual Planning Retreat
 - ✓ Continued planning for 2012 EE Expo
 - ✓ Submitted final report for Kirkpatrick Foundation grant
- Meetings
 - ✓ Attended CPD staff meeting

Watershed Rehabilitation

- Administrative, technical and land rights assistance to 7 Conservation Districts:
 - Sequoyah County – Sallisaw 33
 - Pontotoc County – Upper Clear Boggy 34
 - Adair County – Sallisaw 26
 - Dewey County – Barnitz 1
 - South Caddo – Fort Cobb Laterals 10
 - Logan County – Cottonwood 54
 - East Canadian County – Cottonwood 16
- Construction Contracting:
 - ✓ Washita County CD-Turkey 9, construction progressing
 - ✓ Deer Creek CD-Cobb 1, construction progressing
 - ✓ Pontotoc County CD-Upper Clear Boggy 35, construction progressing; Upper Clear Boggy 36 contract pending; Upper Clear Boggy 33, pre-bid meeting schedule October 4th
 - ✓ Kingfisher County CD-Cottonwood 15, construction progressing
 - ✓ South Caddo CD-Sugar L44, construction progressing
 - ✓ Coal County CD-Caney Coon 2 contract pending
- Construction Management Contracting:
 - ✓ Pontotoc County CD-Upper Clear Boggy 33, 34, and 35
 - ✓ Kingfisher County CD-Cottonwood 15
 - ✓ South Caddo CD-Sugar L44
- Rehabilitation Assessment Project: Completed
 - ✓ field reviews conducted to date: 141
 - ✓ breach analysis & mapping: 141 complete
 - ✓ rehab alternatives & ranking: 141 in progress
 - ✓ assessment report preparation: 141 in progress
- NRCS Rehabilitation Agreement Management: 15 agreements for a total of \$32.6 million
- Claims: Processed 9 rehabilitation claims for a total reimbursement of \$204,909.90
- Rehabilitation Project Status:
 - ✓ Construction Complete-23
 - ✓ Contracting/Construction Started-8
 - ✓ Construction Pending Land Rights-6
 - ✓ Planning & Design Underway-12

Operation & Maintenance

- Technical Assistance: Provided technical assistance for watershed O&M to 16 Conservation Districts:
 - Washita County
 - Stephens County
 - Grady County
 - Greer County
 - Arbuckle
 - Okfuskee County
 - Caney Valley
 - Cherokee County
 - Custer County
 - Dewey County
 - Garvin
 - Coal County
 - South Caddo
 - Konawa
 - West Caddo
 - Murray County
- Conservation District O&M Plans & Priorities - \$22 million identified needs. \$16 million identified needs for FY12.
- Corrective Action Management: monitoring 14 sites.
- District Board Meetings: Murray County, Garvin
- Okie One-Call System: Monitor & troubleshoot system
- Intent-to-Drill System: Monitor & troubleshoot system
- DEQ Alerts: none
- Watershed Aide Management: Konawa; Kiowa County; Murray County; Washita County; Garvin; Grady County
- Claims: Processed 19 watershed claims for a total reimbursement of \$120,611.31
- Watershed Aide Staffing Requests: Arbuckle/Love County; Pontotoc County; Lincoln County; Creek County; South Caddo/North Caddo/West Caddo; Upper Washita
- O&M Funding Requests:
 - ✓ This month: 35 requests reviewed
 - 19 requests approved for a total amount of \$239,507.50; 12 Conservation District's assisted
 - 16 requests were not approved for a total amount of \$350,000
 - ✓ To date: \$3,985,586.42 total amount allocated from bond funds; 54 Conservation District's assisted
- Contracting: Remedial Repairs
 - ✓ South Caddo, Sugar Creek Farrow Drop & Station 493- construction progressing



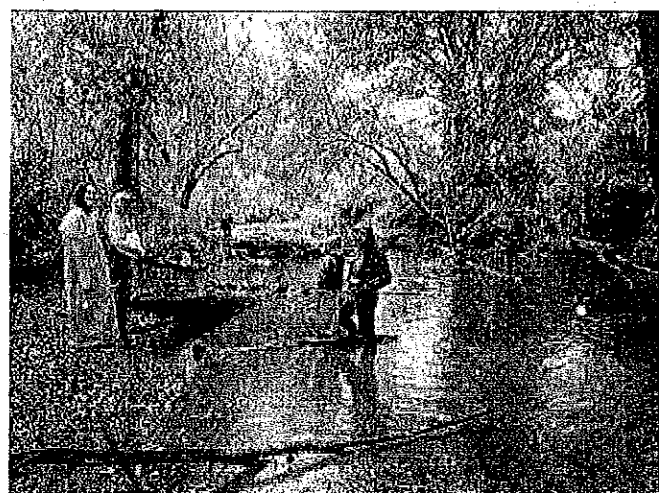
**Blue Thumb
Pictorial Report
SEPTEMBER
2011**

OCC Water Quality Specialists Leonard Moore, center, and Wes Shockley, squatting, helped Blue Thumb with a fish collection on Buffalo Creek in McCurtain County. Volunteer Dennis Wilson is also pictured.



Wes and Leonard also helped with the fish collection on Caston Creek in LeFlore County. Lisa Grey, District Secretary, lent a hand, as did NRCS staff members from the Poteau Field Office.

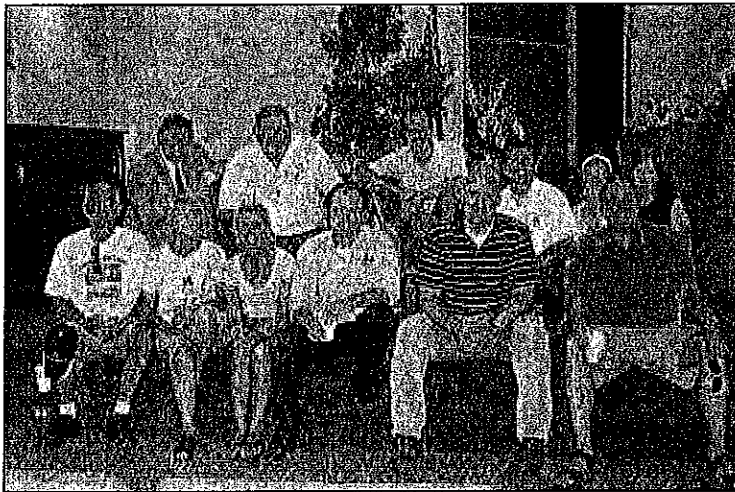
Elusive Chestnut Lamprey!!!





Kim Shaw helped new volunteer Mary Peck with her 4-H kids as they began monitoring in Washita County.

Below, Gloria Webb is a new volunteer to monitor Pennington in Johnston County.



Blue Thumb staff member Kevin Gustavson, top in front of tree, and Jason Vogel, OSU, helped the First Christian Church of Midwest City find an appropriate location for a rain garden.

